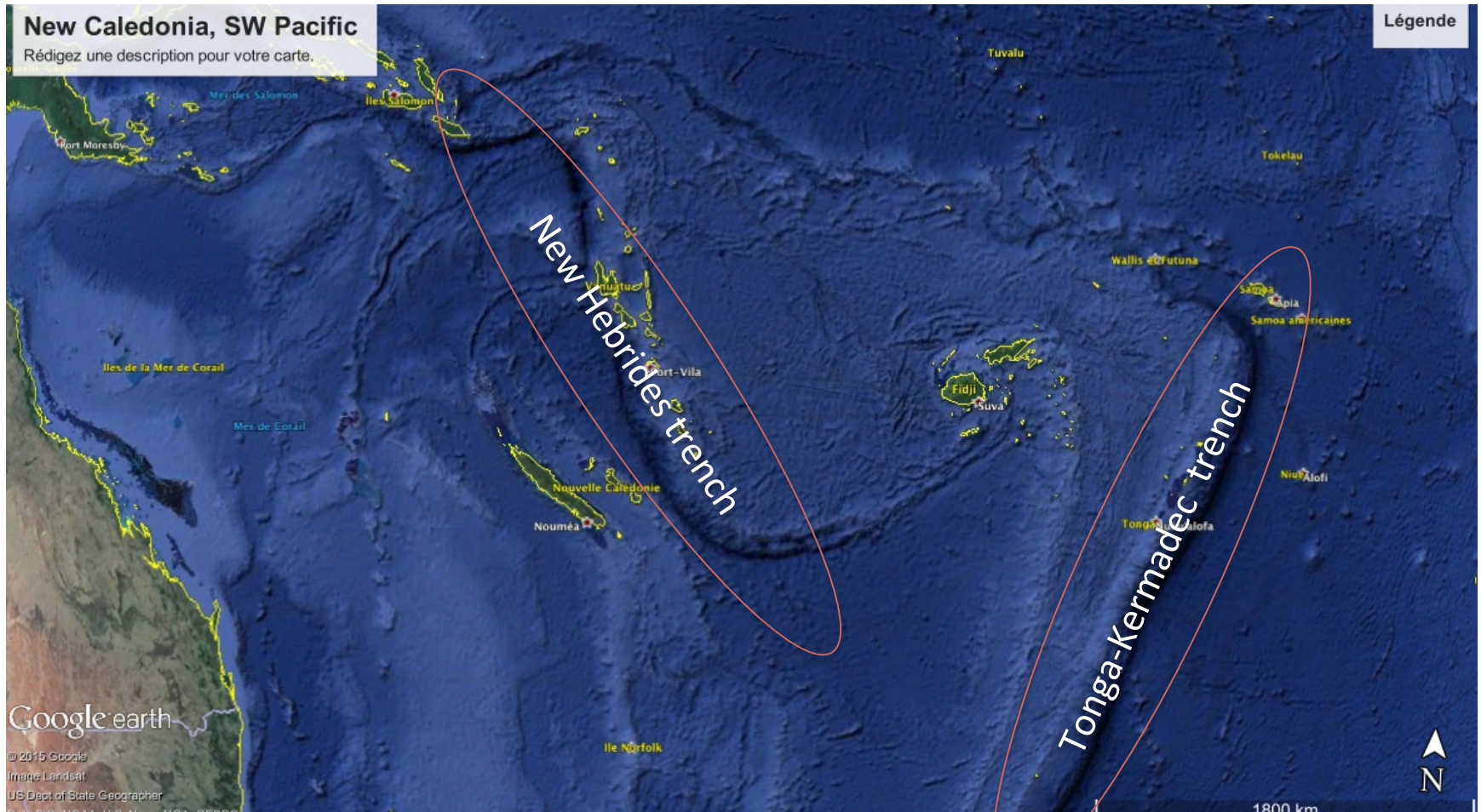


Institutional situation in New Caledonia

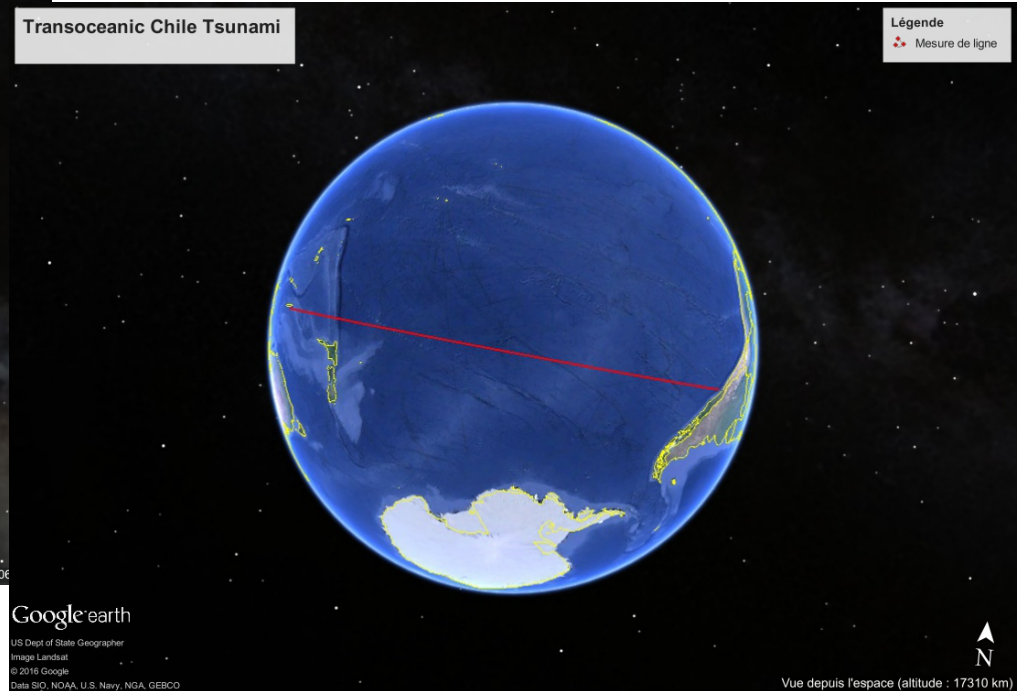
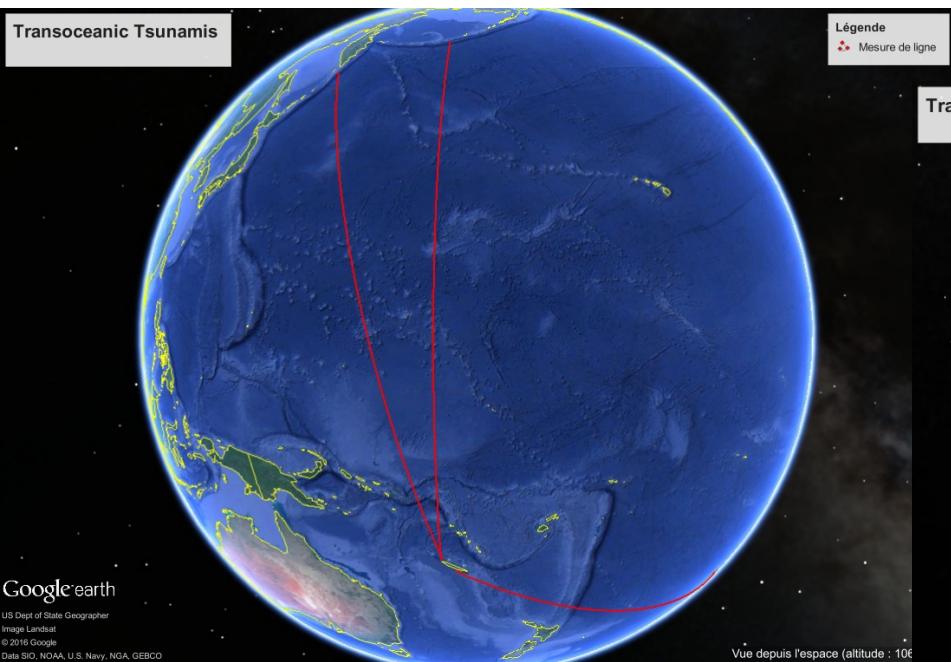
- New Caledonia is a French Territory with a large autonomy, and its own government.
- Civil Defense (DMO) was transferred from France to the local government on Jan. 1st 2014 (new director, new staff) : DSCGR
- New Caledonia is not UNESCO or IOC member, and is still represented by FRANCE during ICGs.
- List of new TWFP (phone and emails) is now updated.

Tsunami Warning system in New Caledonia (France)

Local/regional hazards

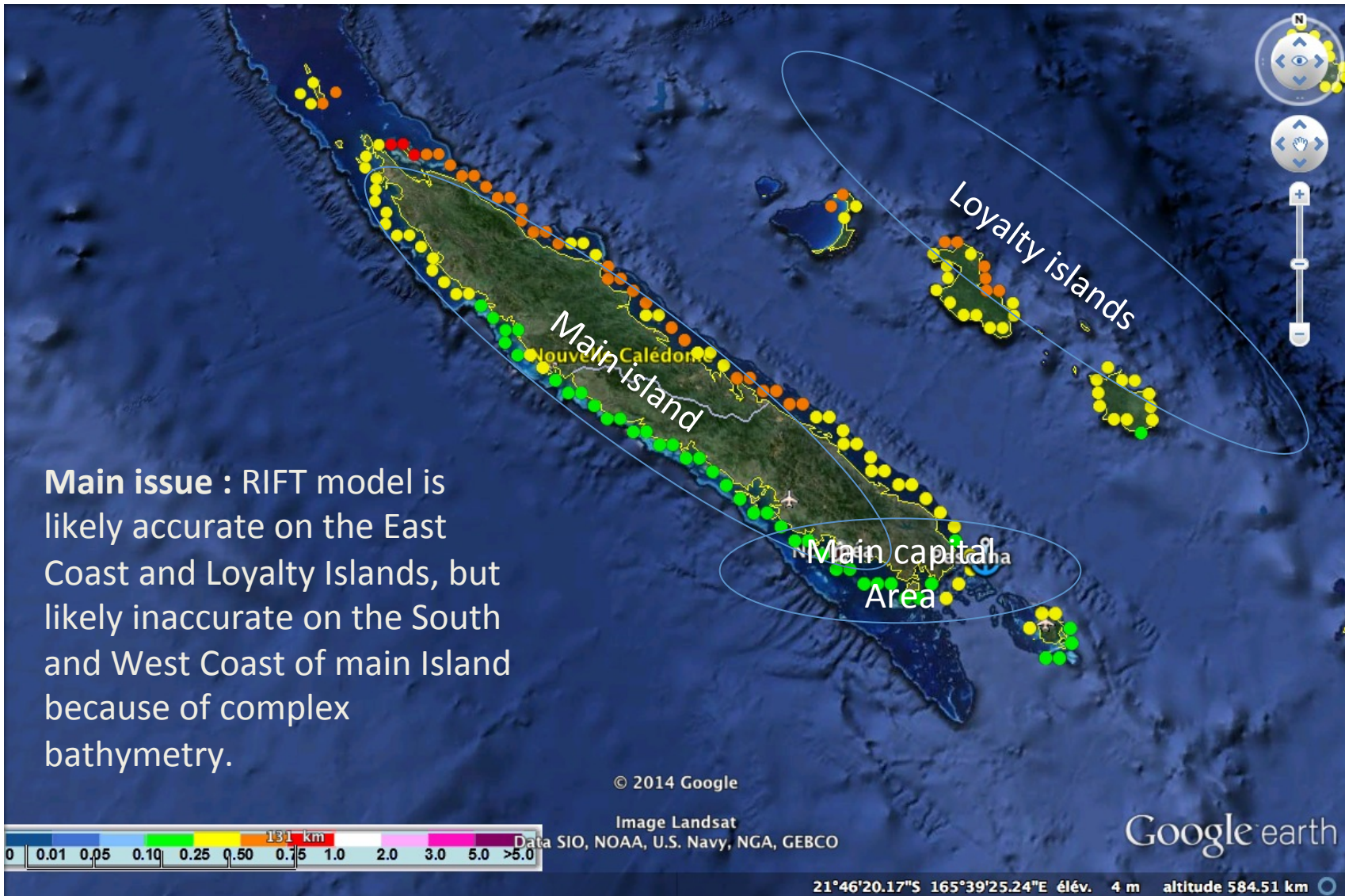


Tsunami Warning system in New Caledonia (France) distant hazards



Tsunami vulnerability in New Caledonia :

- Strongest hazards along the Loyalty Islands and the East Coast,
- Most assets along the West Coast.



New Caledonia/France current SOPs

- 3 TWFPs : Local DMO, MRCC (Marine Rescue Coordination Center), French Security zone HQ (for Wallis & Futuna).
- Met services not involved.
- TWFPs are have been trained to new PTWC products.
- New Caledonia participated in Pacwave 2015 (Tonga EQ).
- 2 Means of threat assessment :
 - ORSNET/IRD (and PTWC and USGS) Seismic detection used directly as a first mean of threat assessment, with quick look-up table.
 - New reliance on graphical products from PTWC (especially kmz files).
- Reliance on local tide gauges (IOC sea level monitoring website).

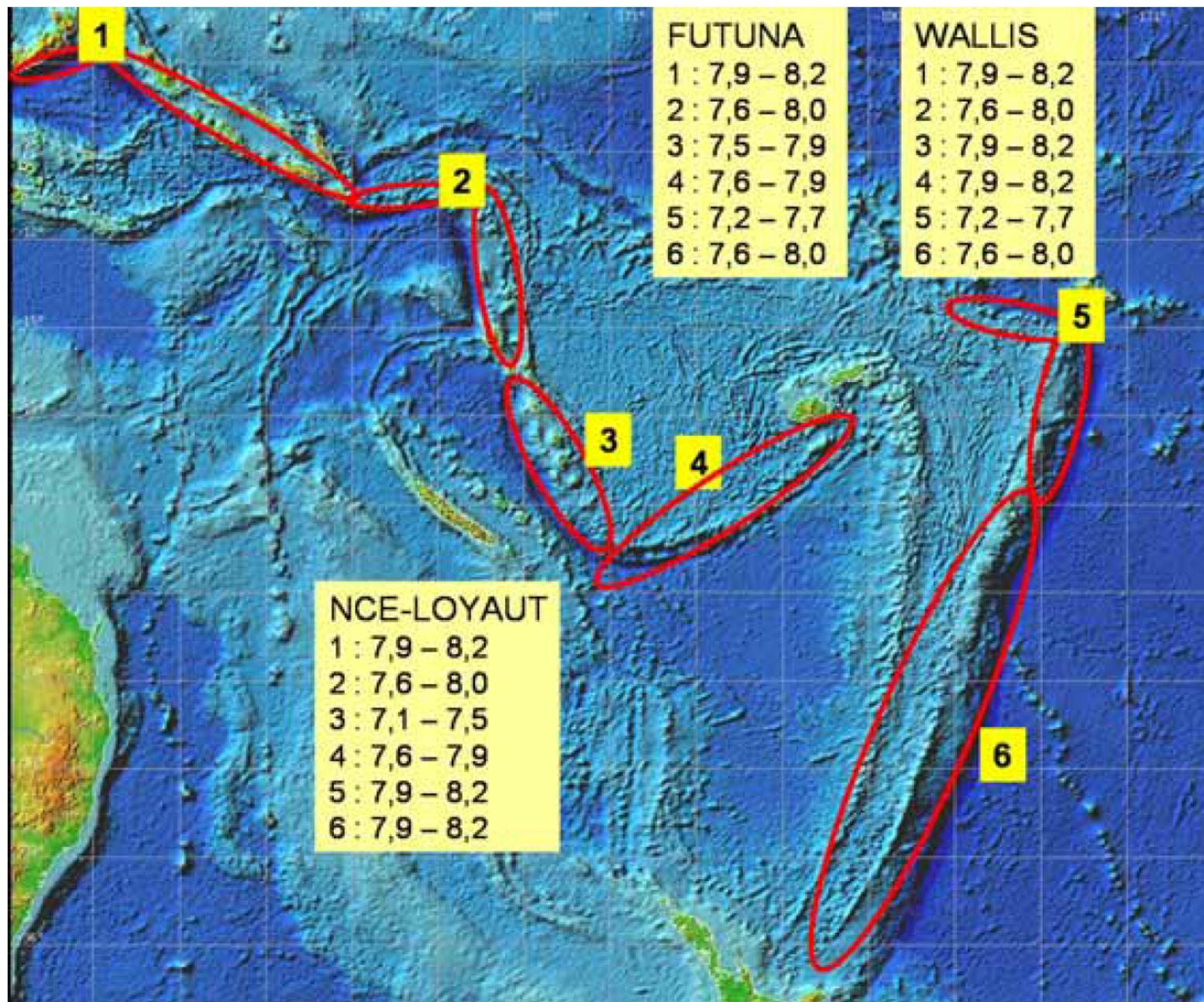
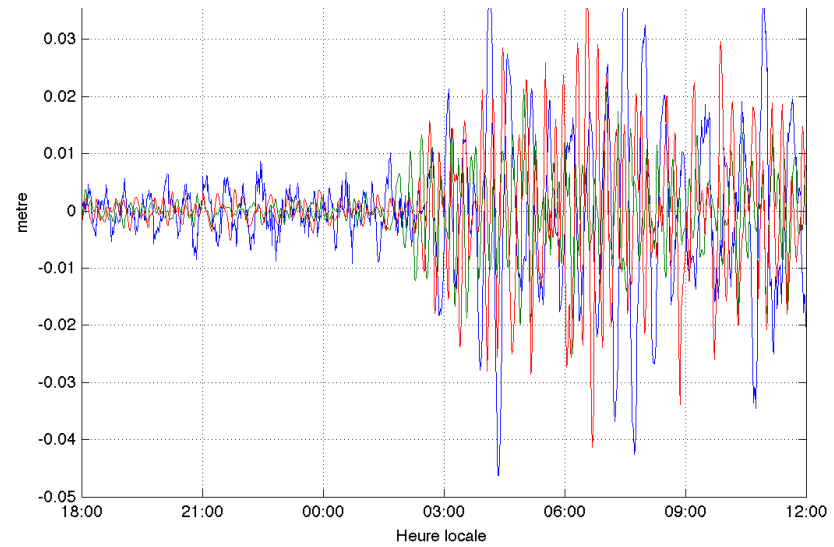
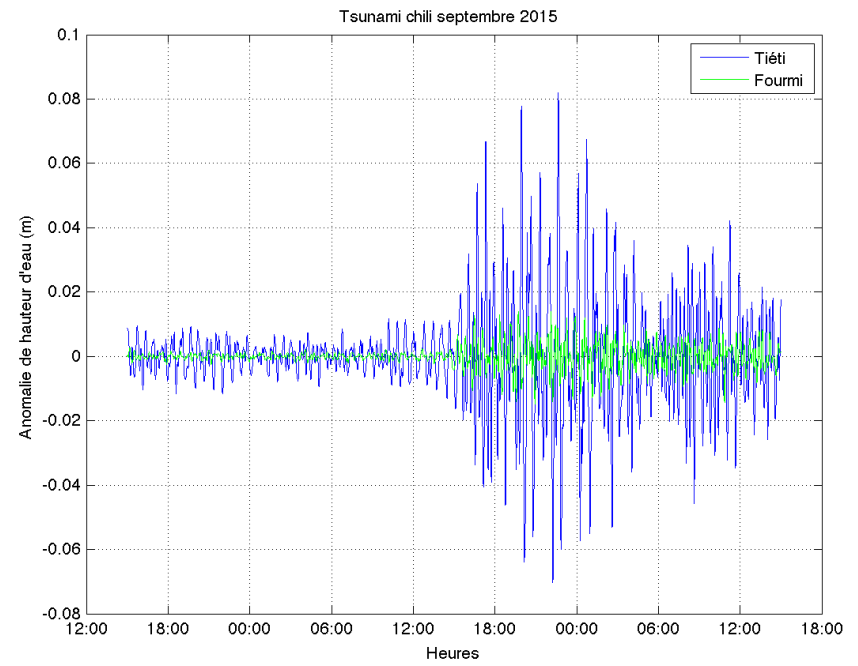
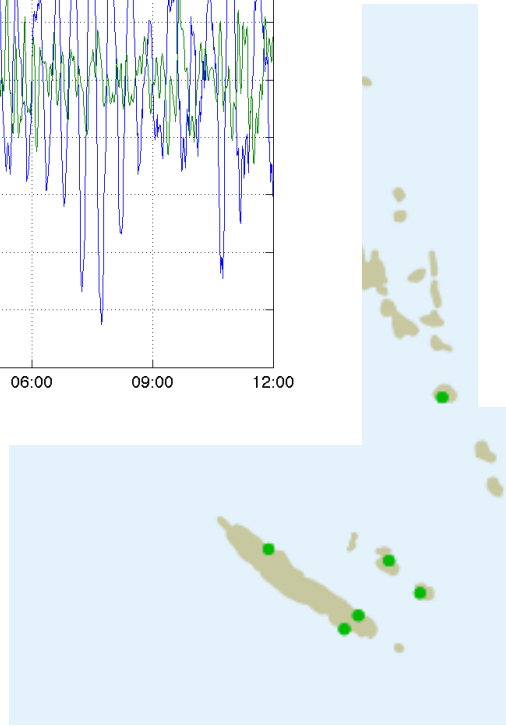
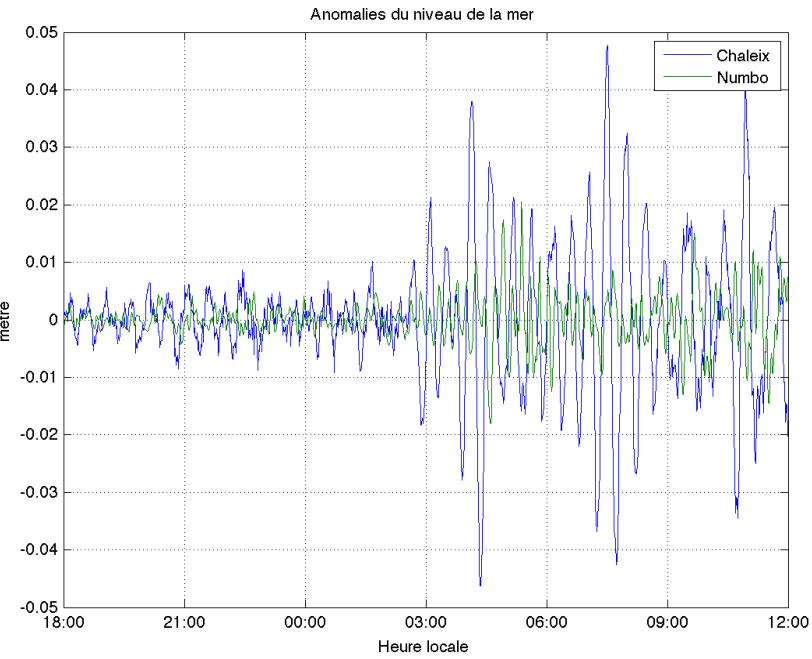


Figure 1 : Les 6 zones de la région Salomons-Tonga (voir figure 1.1 à 1.6 pour le détail des niveaux d'alerte pour chacune des 6 zones)

- **Main issue** : RIFT model is likely accurate on the East Coast and Loyalty Islands, but likely inaccurate on the South and West Coast because of complex bathymetry.
- **PTWC products** : Only one polygon (3 needed), and one ETA point (5 needed)
- **Future SOPS** :
 - Temporarily assign actions (information, evacuation) based on RIFT height levels.
 - Evaluate risks on each coasts (especially the West Coast) by running higher resolution tsunami models from historical scenarios.
- **Warning staff training underway (~4 officers at each TWFP).**
- **Action Item : Continue outreach and Education especially for local tsunamis.**



Chile Tsunami September 2015

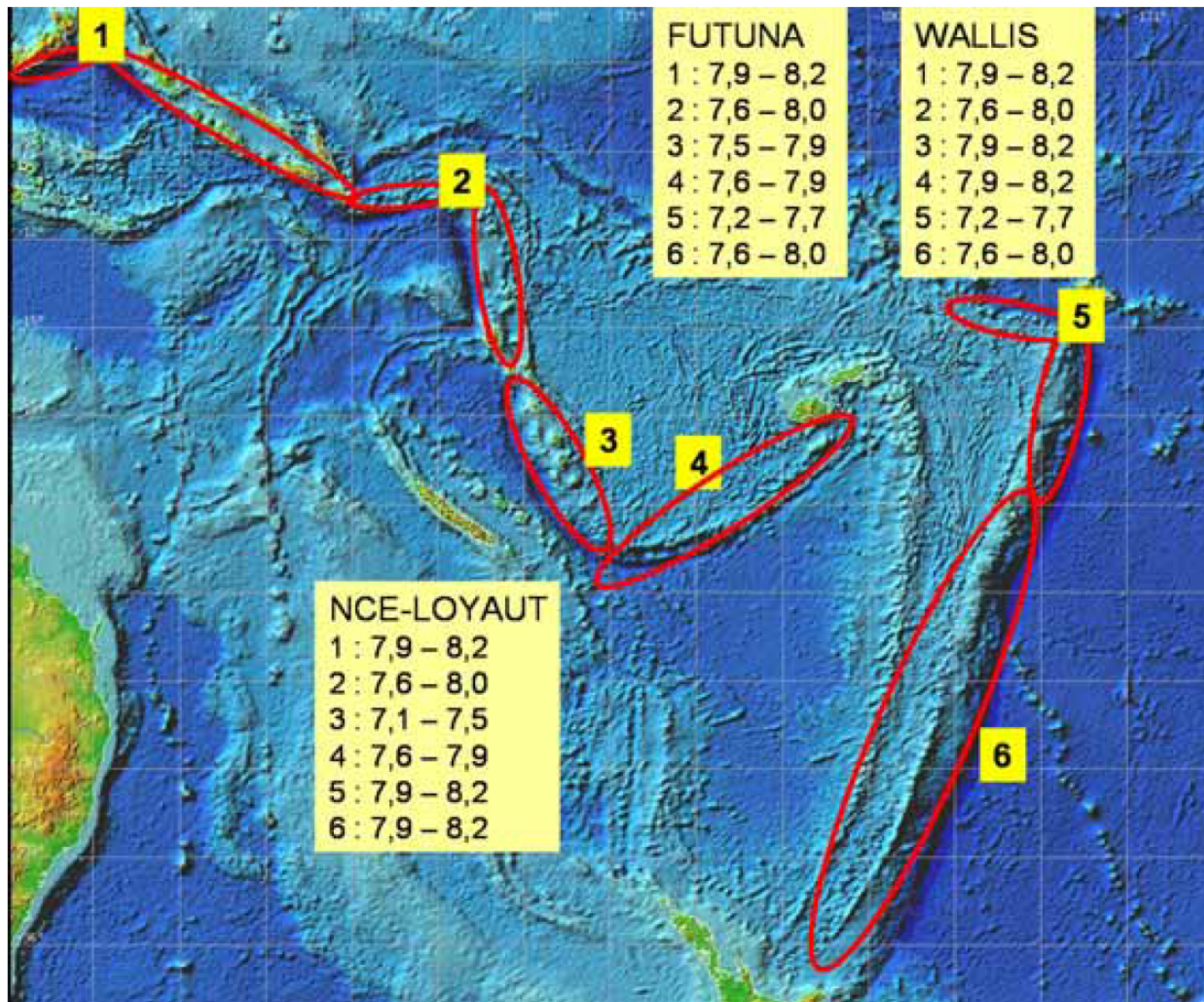
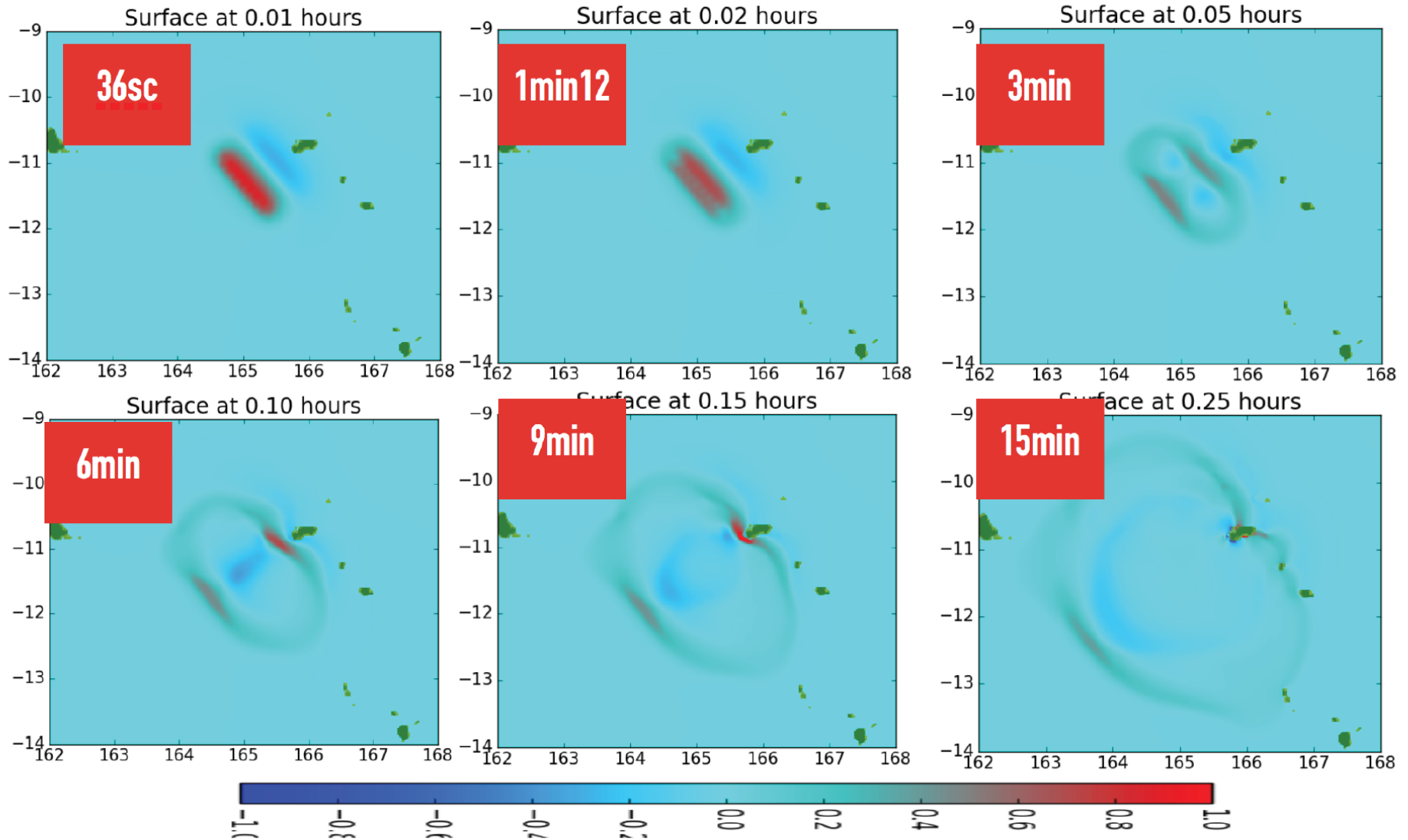
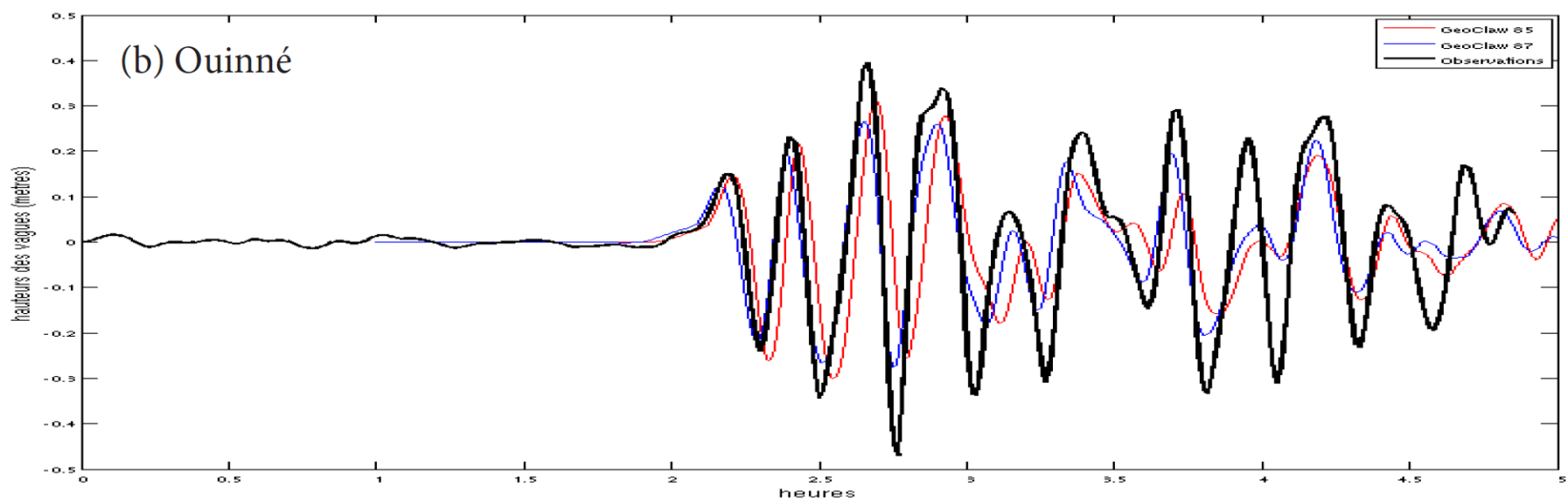
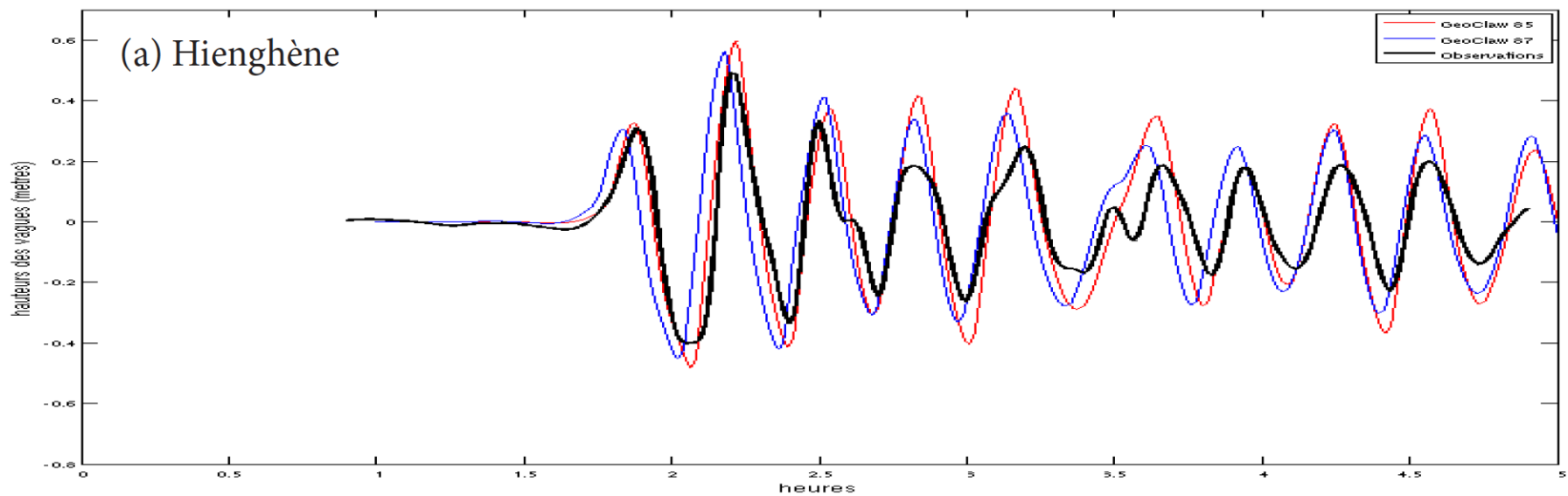
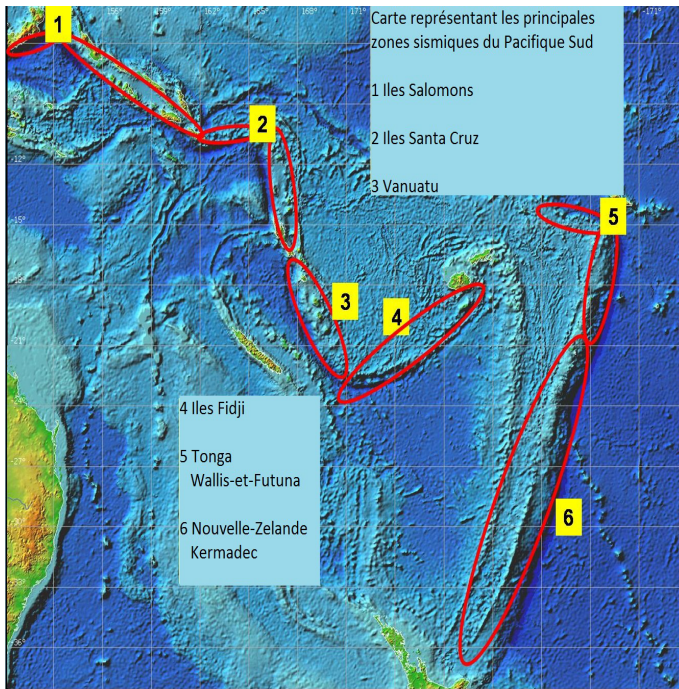


Figure 1 : Les 6 zones de la région Salomons-Tonga (voir figure 1.1 à 1.6 pour le détail des niveaux d'alerte pour chacune des 6 zones)

In-country modeling (Geoclaw)







Current look-up table based on seismic data alone.

Zone	Etats de la zone (ordre alphabétique)	Coordonnées épicentre	Magnitude	Profondeur	Risque	Délai estimé	Impact potentiel
1	New Britain New Ireland Papua new Guinea Solomon Islands	longitudes 150 à 162° est latitudes 4 à 11° sud	< 7.9 > = 7.9	/ < 40 km	non avéré avéré	/ 1h30 / 2h40	/ Loyautés + Grande Terre
2	Bank Islands Santa Cruz Islands Torres Islands	longitudes 162 à 168° est latitudes 10 à 16° sud	< 7.5 > = 7.5 > = 7.9	/ < 40 km < 40 km	non avéré avéré avéré	/ 1h10 / 1h30 1h20 / 1h40	/ Loyauté + Est Grande Terre Ouest Grande Terre
3	Vanuatu	longitudes 167 à 171° est latitudes 16 à 23° sud	< 7 > = 7 > = 7.9	/ < 40 km < 40 km	non avéré avéré avéré	/ 0h10 / 0h30 1h20 / 1h40	/ Loyautés + Est Grande Terre Ouest Grande Terre
4	Fiji Islands Minerva Reef	longitudes 170 à 179° est latitudes 18 à 24° sud	< 7.5 > = 7.5 > = 7.9	/ < 40 km < 40 km	non avéré avéré avéré	/ 0h30 / 2h00 1h00 / 2h20	/ Loyautés + Est Grande Terre Ouest Grande Terre
5	Tonga Trench Wallis and Futuna	longitudes 172 à 177° est latitudes 14 à 21° sud	< 7.9 > = 7.9	/ < 40 km	non avéré avéré	/ 0h30 / 2h20	/ Loyautés + Grande Terre
6	New-Zealand Kermadec Ridge	longitudes 178 à 180° est longitudes 174 à 180° ouest latitudes 21 à 38° sud	< 7.9 > = 7.9	/ < 40 km	non avéré avéré	/ 2h30 / 3h00	/ Loyautés + Grande Terre