



**INTERGOVERNMENTAL OCEANOGRAPHIC COMMISSION (of UNESCO)**  
**Online meeting Intergovernmental Coordination Group for the Pacific Tsunami**  
**Warning and Mitigation System (ICG/PTWS)**  
**Steering Committee Meeting (Virtual) 21-23 September 2021**

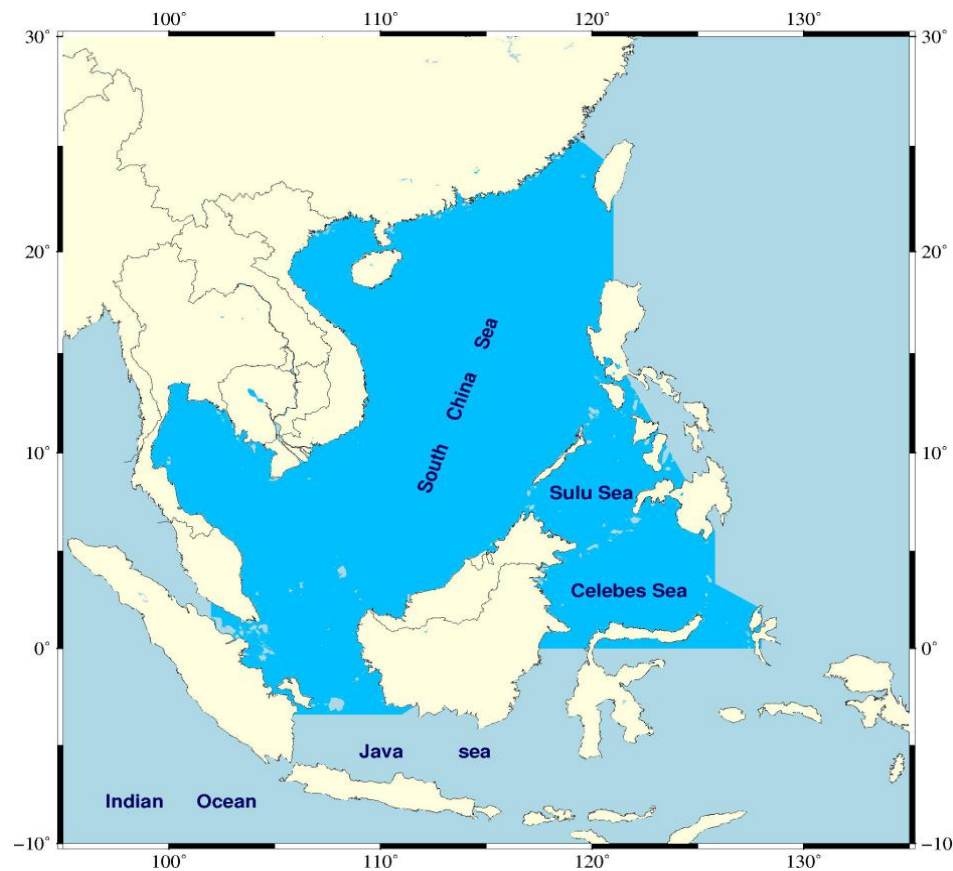
# **Report from the South China Sea Tsunami Advisory Center (SCSTAC)**

---

Zhiguo Xu  
South China Sea Tsunami Advisory Center, UNESCO/IOC

# The Area of Service for SCSTAC

The Area of Service (AoS) for the South China Sea Tsunami Warning and Mitigation System (SCSTWS) specified by ICG/PTWS embraces all coasts of the South China Sea, and the adjacent Sulu Sea and Celebes Sea, separated by Palawan and Sulu Archipelago from north to south respectively. A total of nine nations bordering the SCS region include Brunei, Cambodia, China, Indonesia, Malaysia, Philippines, Singapore, Thailand, and Vietnam (in alphabetic order).

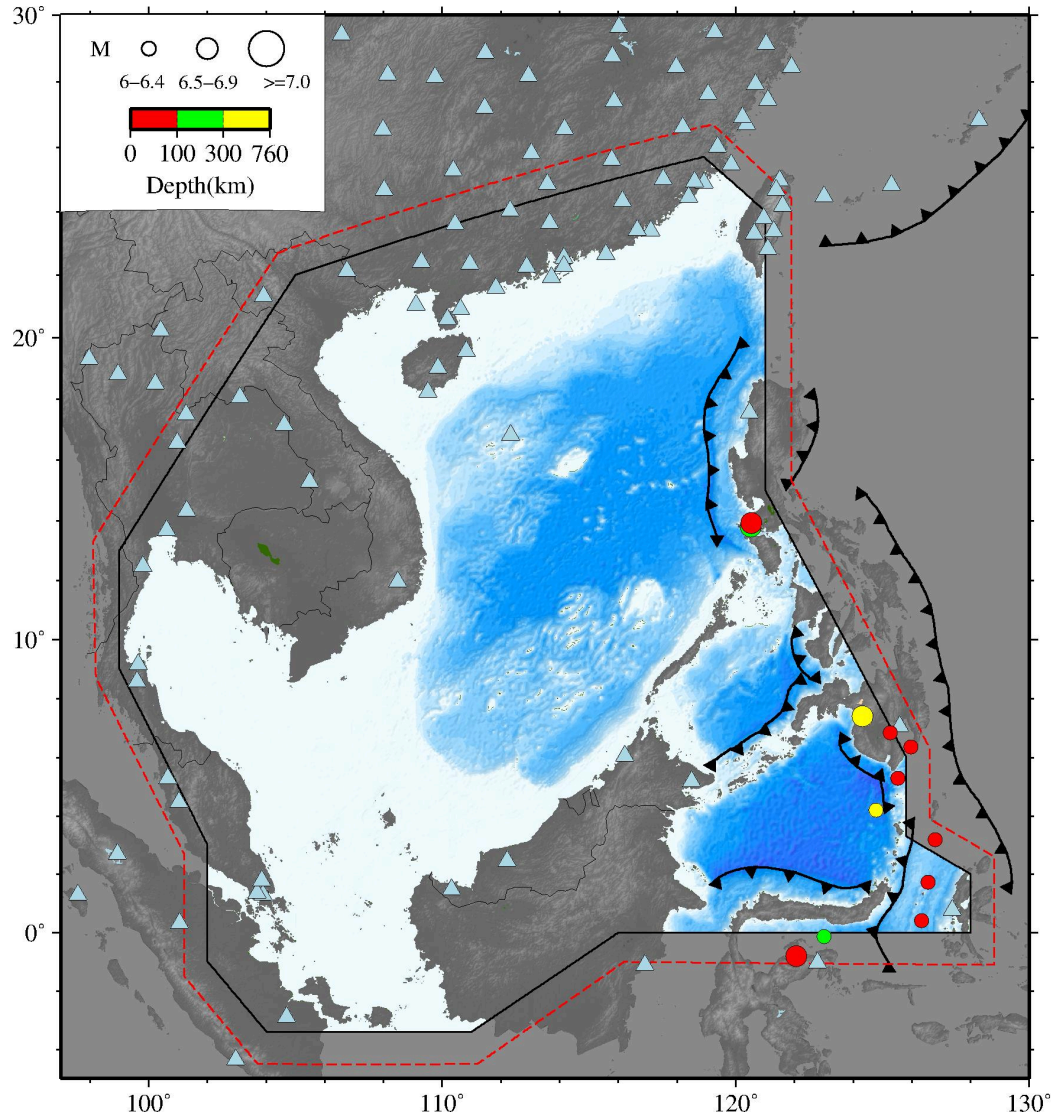


## **Issued Tsunami Bulletins (Jul. 2020- Sep. 2021)**

No	Mag	Origin Time (UTC)	Dep/km	Lon/°	Lat/°	Location
1	6.6	2021-07-26 12:09:00	30.0	122.06	-0.81	SULAWESI, INDONESIA
2	6.9	2021-07-23 20:49:00	104.3	120.50	13.80	MINDORO, PHILIPPINES
3	6.1	2021-07-10 00:43:00	70.0	126.78	3.19	TALAUD ISLANDS, INDONESIA
4	6.2	2021-06-03 10:09:00	15.0	126.33	0.40	NORTHERN MOLUCCA SEA
5	6.2	2021-04-10 09:30:00	314.0	124.77	4.19	TALAUD ISLANDS, INDONESIA
6	6.0	2021-02-07 04:22:00	20.0	125.26	6.84	MINDANAO, PHILIPPINES
7	6.1	2021-01-06 20:59:00	183.7	122.89	-0.02	MINAHASSA PENINSULA, SULAWESI
8	6.5	2020-12-24 23:43:00	90.0	120.52	13.92	LUZON, PHILIPPINES
9	6.4	2020-12-15 23:22:00	15.0	125.51	5.28	MINDANAO, PHILIPPINES
10	6.4	2020-09-06 15:23:00	98.2	125.97	6.36	MINDANAO, PHILIPPINES
11	6.1	2020-09-06 00:21:00	55.0	126.54	1.72	NORTHERN MOLUCCA SEA
12	6.5	2020-08-01 17:09:00	490.9	124.32	7.41	MINDANAO, PHILIPPINES

**Issued for 12 events**

# SCSTAC's Earthquake Location



(Jul. 2020- Sep. 2021)

# SCSTAC new website

http://scstac.oceanguide.org.cn/scstac/index.htm



- Home
- Recent Events
- Tsunami Service
- Latest News
- Tsunami Education
- SCSTAC
- FAQ
- LINK
- Historical Events

**No Current Tsunami Information or Threat in Effect within the SCS Region !**

Latest Event Details

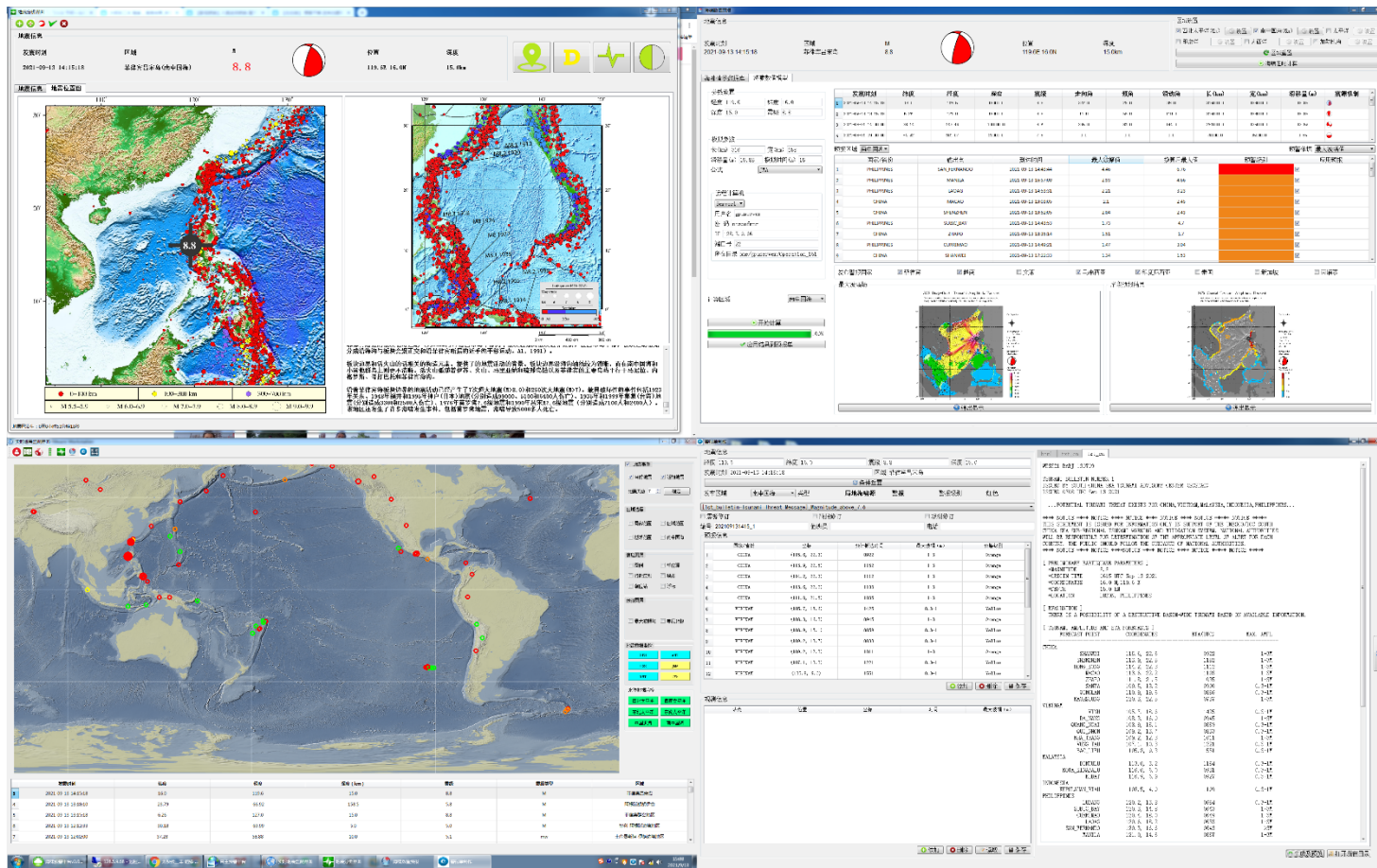
 **Earthquake:** **Magnitude:** 6.6 **Depth:** 30.0KM  
**Origin Time:** 2021-07-26 12:09:00(UTC) **Lat:** 0.81°S **Lon:**122.06°E  
**Location:** SULAWESI, INDONESIA [Detail...](#)

Events List [more](#)

No	Mag	Origin (UTC)	Depth (km)	Lon (°)	Lat (°)	Location	Message
1	6.6	2021-07-26 12:09:00	30.0	122.06°E	0.81°S	SULAWESI, INDONESIA	<a href="#">Detail..</a>
2	6.9	2021-07-23 20:49:00	104.3	120.50°E	13.80°N	MINDORO, PHILIPPINES	<a href="#">Detail..</a>
3	6.1	2021-07-10 00:43:00	70.0	126.78°E	3.19°N	TALAUD ISLANDS, INDONESIA	<a href="#">Detail..</a>
4	6.2	2021-06-03 10:09:00	15.0	126.33°E	0.40°N	NORTHERN MOLUCCA SEA	<a href="#">Detail..</a>
5	6.2	2021-04-10 09:30:00	314.0	124.77°E	4.19°N	TALAUD ISLANDS, INDONESIA	<a href="#">Detail..</a>
6	6.0	2021-02-07 04:22:00	20.0	125.26°E	6.84°N	MINDANAO, PHILIPPINES	<a href="#">Detail..</a>

# Self-developed Decision Supporting System

Self-developed of Tsunami Warning Decision Supporting System at SCSTAC based on Python



# SCSTAC Communications Tests

- SCSTAC conducted 2 communications tests on 28 Jan and 28 May 2021. 6 Member States were responded for dummy information
- Thanks to the coordination of the secretariat and the Member States,



## SCSTAC COMMUNICATIONS TEST

ISSUED BY SOUTH CHINA SEA TSUNAMI ADVISORY CENTER (SCSTAC)

ISSUED AT 0600Z 28 MAY 2021

THIS IS A TEST BULLETIN

THIS IS A TEST TO VERIFY COMMUNICATION LINKS AND DETERMINE

TRANSMISSION TIMES INVOLVED IN THE DISSEMINATION OF OPERATIONAL

TSUNAMI ADVICE PRODUCTS FROM THE SOUTH CHINA SEA TSUNAMI ADVISORY

CENTER TO DESIGNATED 24-HOUR TSUNAMI WARNING FOCAL POINTS OF THE SOUTH CHINA SEA TSUNAMI WARNING SYSTEM.

RECIPIENTS ARE REQUESTED TO PLEASE RESPOND BACK TO THE SOUTH CHINA SEA TSUNAMI ADVISORY CENTER.

PLEASE RESPOND VIA ONE OF THE FOLLOWING MEANS

\*TEL:+86-10-62104561

\*EMAIL:TSU@NMEFC.CN

\*FAX:+86-10-62173638

THANK YOU FOR YOUR PARTICIPATION IN THIS COMMUNICATION TEST

# Technical Training Activities for Watching Standers

- **Seismic Analysis**
  - Earthquake Location/Magnitude/Depth
  - Operation seismic monitoring system
  - Rapid Characterization of Tsunami Source
- **Sea Level Data Analysis**
  - Detect/Confirm tsunami waves
  - Refine the tsunami waves
- **Tsunami Forecasting**
  - TTT
- **Message Dissemination**
- **Routine Drill**

**Enhancing the capability of tsunami warning**





# Further Plans

---

- ❑ Attends the 10th Meeting (online) - PTWS Regional WG-South China Sea region
- ❑ continues to SCSTAC Communication Test
- ❑ Conducts an online Training Workshop on Tsunami Forecasting and Risk Assessment for Tsunami Warning Operators in the South China Sea region, on the first of December 2021 hosted by China,
- ❑ Provides opportunities for in-person education, outreach and training activities in the region(regional training workshop/short-term international staff) depend on the COVID-19 epidemic situation



**INTERGOVERNMENTAL OCEANOGRAPHIC COMMISSION (of UNESCO)**  
**Online meeting Intergovernmental Coordination Group for the Pacific Tsunami**  
**Warning and Mitigation System (ICG/PTWS)**  
**Steering Committee Meeting (Virtual) 21-23 September 2021**

# Thank You

---

Zhiguo Xu  
South China Sea Tsunami Advisory Center, UNESCO/IOC