

Comms Tests and TSP KPIs

Agenda item 2.4 & 2.5

Patanjali Kumar Chodavarapu, India

patanjali@incois.gov.in

Robert Greenwood, Australia

robert.greenwood@bom.gov.au

Karyono, Indonesia

karyonosu@gmail.com

ICG/IOTWMS Working Group 2 Meeting, 3-4 November 2021



unesco

Intergovernmental
Oceanographic
Commission

Comms Test Schedule

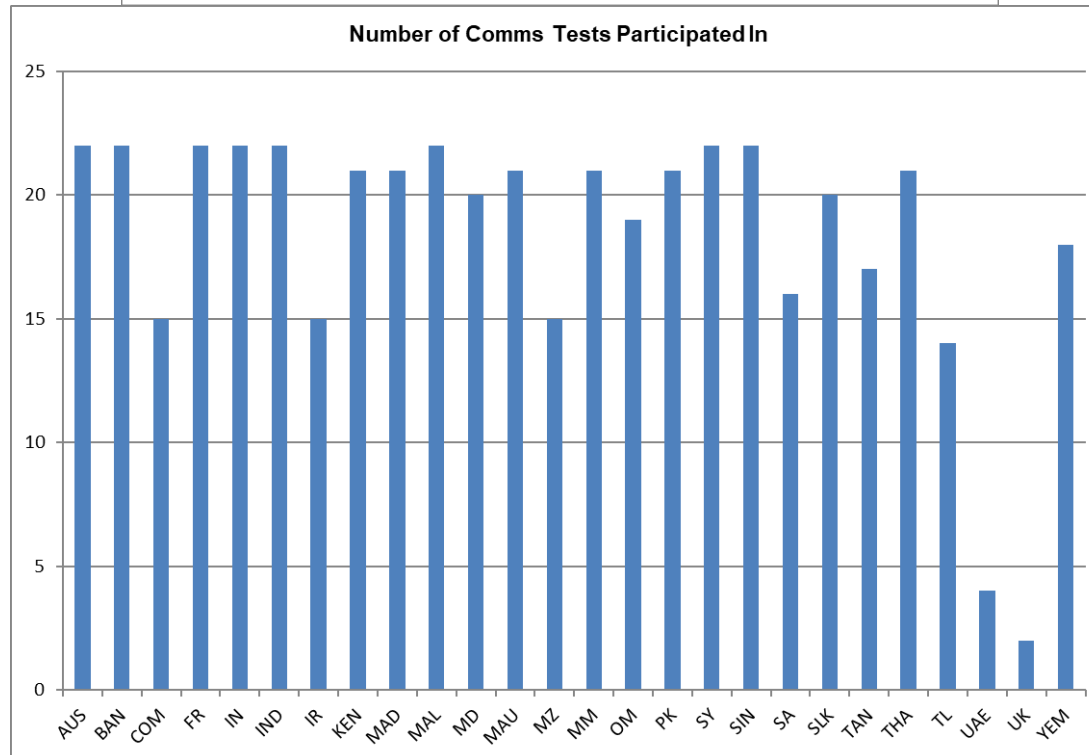
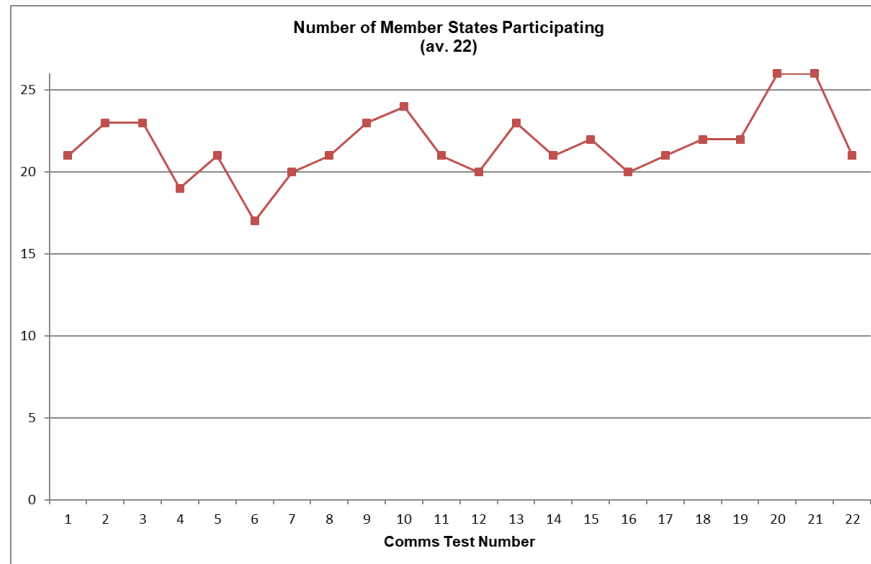
Test Number	Date	Status
1	16 March 2011	Conducted
2	15 June 2011	Conducted
3	14 September 2011	Conducted
4	14 December 2011	Conducted
5	13 June 2012	Conducted
6	12 December 2012	Conducted
7	12 June 2013	Conducted
8	11 December 2013	Conducted
9	11 June 2014	Conducted
10	10 December 2014	Conducted
11	10 June 2015	Conducted
12	9 December 2015	Conducted
13	8 June 2016	Conducted
14	14 December 2016	Conducted
15	14 June 2017	Conducted
16	13 December 2017	Conducted
17	13 June 2018	Conducted
18	12 December 2018	Conducted
19	12 June 2019	Conducted
20	11 December 2019	Conducted
21	10 June 2020	Conducted
22	9 June 2021	Conducted
23	8 December 2021	Planned



unesco

Intergovernmental
Oceanographic
Commission

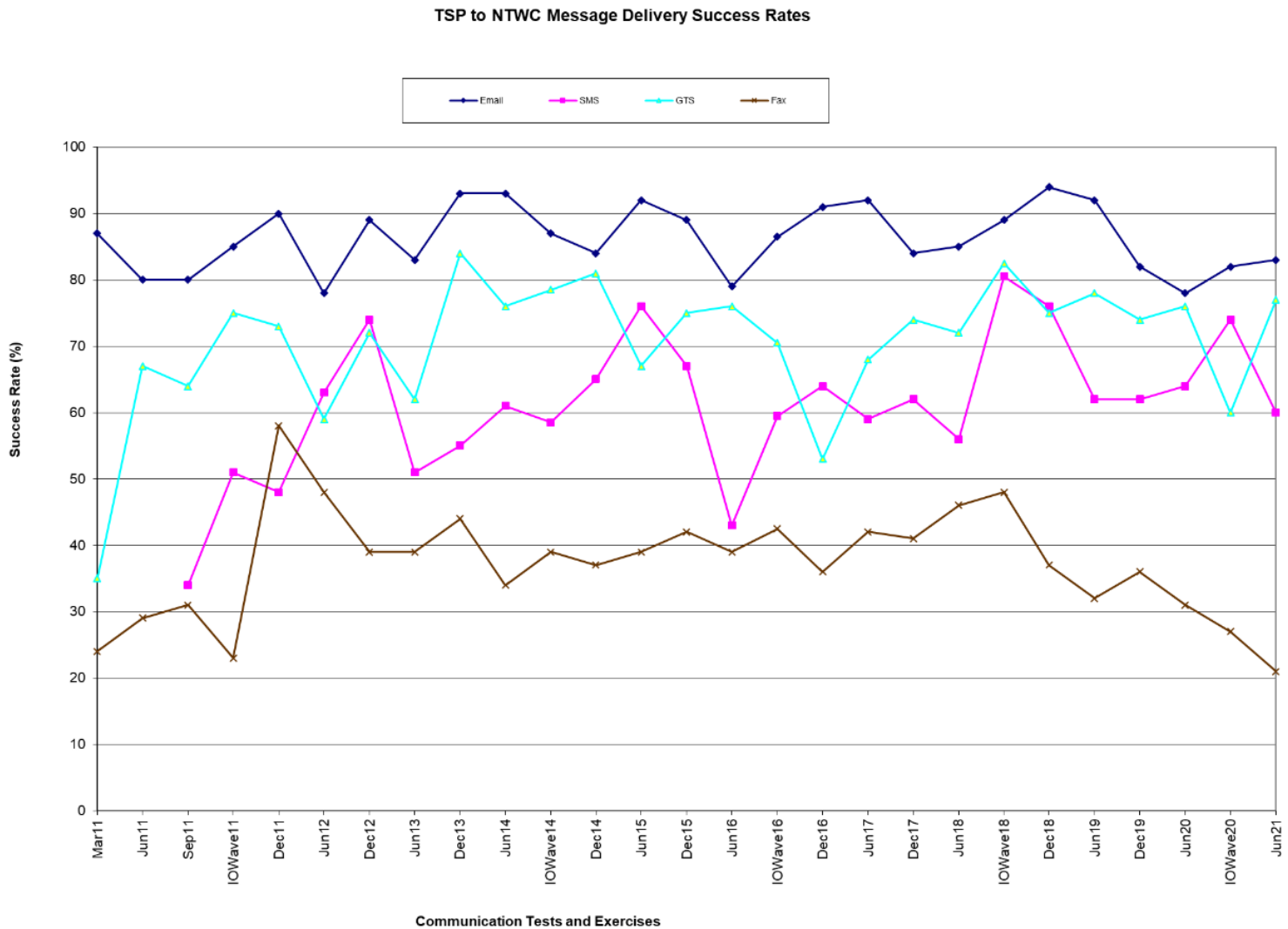
Comms Test Participation Rates



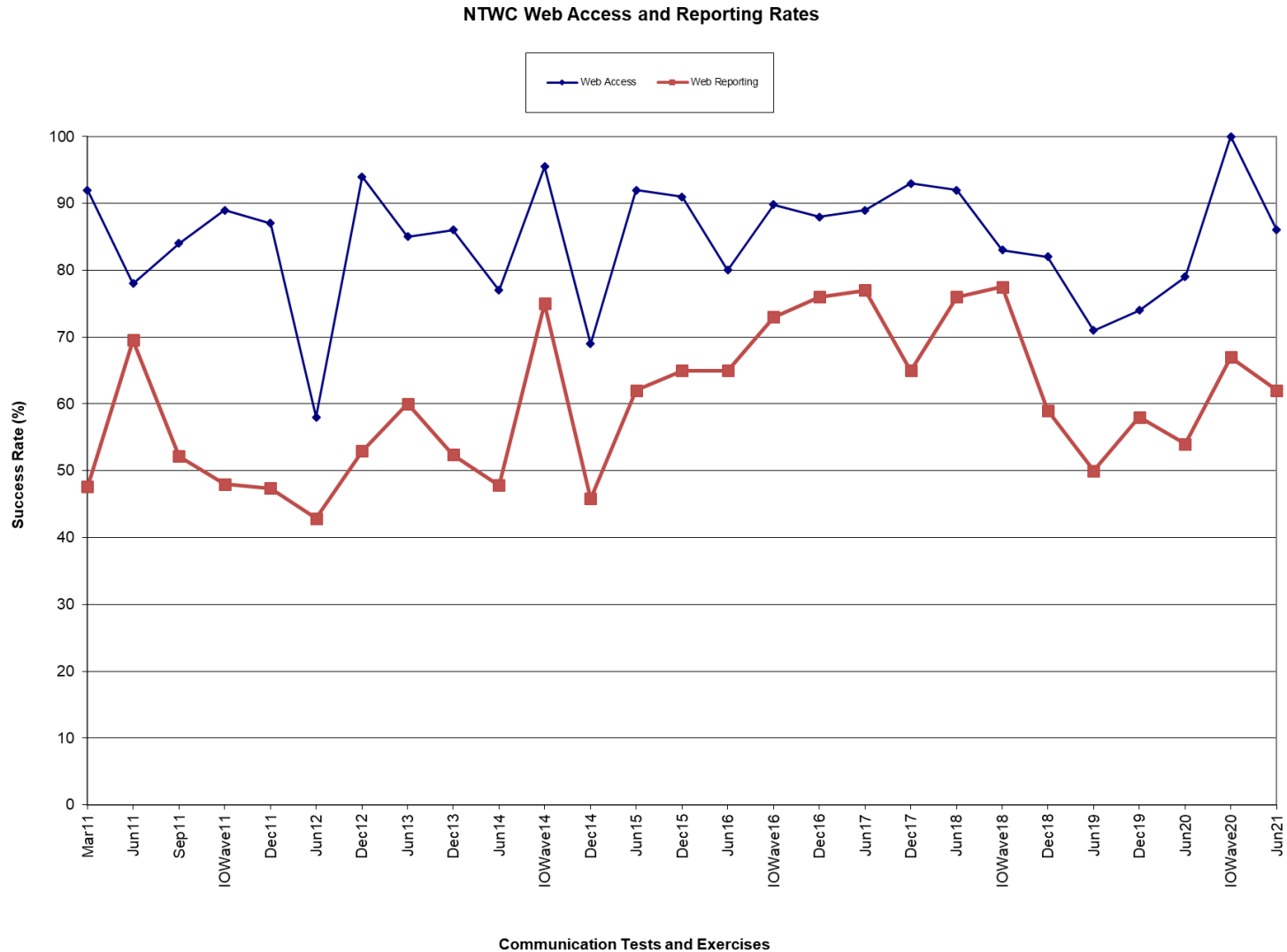
unesco

Intergovernmental
Oceanographic
Commission

TSP to NTWC Message Delivery Success Rates All Comms Tests



Web Access and Status Reporting All Comms Tests



TSP KPIs 2020

	Service Level 1 EQ Bulletins					Service Level 2 Threat / No Threat Bulletins		
TSP	KPI 1	KPI 2	KPI 3	KPI 4	KPI 5	KPI 6	KPI 7	KPI 8
	ET First EQ Bull	POD IO EQs GE M6.8	EQ Mag	EQ Depth	EQ Location	ET First Threat Bull	POD Tsunami Waves	Tsunami Height Accuracy
	Target: 10 mins (% met)	Target: 100%	Target: 0.3 (% met)	Target: 30 km (% met)	Target: 30 km (% met)	Target: 20 mins (% met)	Target: 100%	Target: Factor of 2
Australia	13.8 min (10.0%)	100%	0.11 (100%)	13.7 (95%)	21.1 (70%)	21.7 (66.7%)	n/a	n/a
India	9.2 min (90.0%)	100%	0.1 (70.0%)	30.0 (70.0%)	18.6 (85%)	25 min (0.0%)	n/a	n/a
Indonesia	13.9min (45.0%)	100%	0.26 (69.2%)	13.24 (90.0%)	26.5 (64.1%)	46.7 min (0.0%)	n/a	n/a

NOTES

KPI 2: No IO events >= M6.8

KPI 6:

Australia issued 3 No Threat Bulletins

India issued 1 No Threat Bulletin

Indonesia issued 2 No threat Bulletins

KPI 7,8: No events caused threat-level tsunami waves

Meets Target	Near Target	Misses Target
-----------------	----------------	------------------

TSP KPIs 2021 (Jan – Oct)

	Service Level 1 EQ Bulletins					Service Level 2 Threat / No Threat Bulletins		
TSP	KPI 1	KPI 2	KPI 3	KPI 4	KPI 5	KPI 6	KPI 7	KPI 8
	ET First EQ Bull	POD IO EQs GE M6.8	EQ Mag	EQ Depth	EQ Location	ET First Threat Bull	POD Tsunami Waves	Tsunami Height Accuracy
	Target: 10 mins (% met)	Target: 100%	Target: 0.3 (% met)	Target: 30 km (% met)	Target: 30 km (% met)	Target: 20 mins (% met)	Target: 100%	Target: Factor of 2
Australia	18.5 min (16.2%)	n/a	0.08 (97.3%)	19.7 (75.7%)	33.1 (78.4%)	34.0 (33.3)	n/a	41%
India	12.1 min (40.0%)	n/a	0.1 (76.0%)	17.6 (72.0%)	12.58 (92%)	29 min* (0.0%)	n/a	n/a
Indonesia	10.1min (68.97%)	n/a	0.22 (79.31%)	16.14 (79.31%)	23.10 (65.52%)	33 (0%)	n/a	n/a

NOTES

KPI 2: No IO events >= M6.8

KPI 6:

Australia issued 4 No Threat, 1 Potential threat, and 1 Confirmed threat Bulletin

India issued 1 No Threat Bulletin

For the recent South Sandwich Island event, TSP India has issued a no threat bulletin as an information. This event is not considered for calculation of KPI 6.

Indonesia issued 1 No Threat Bulletin

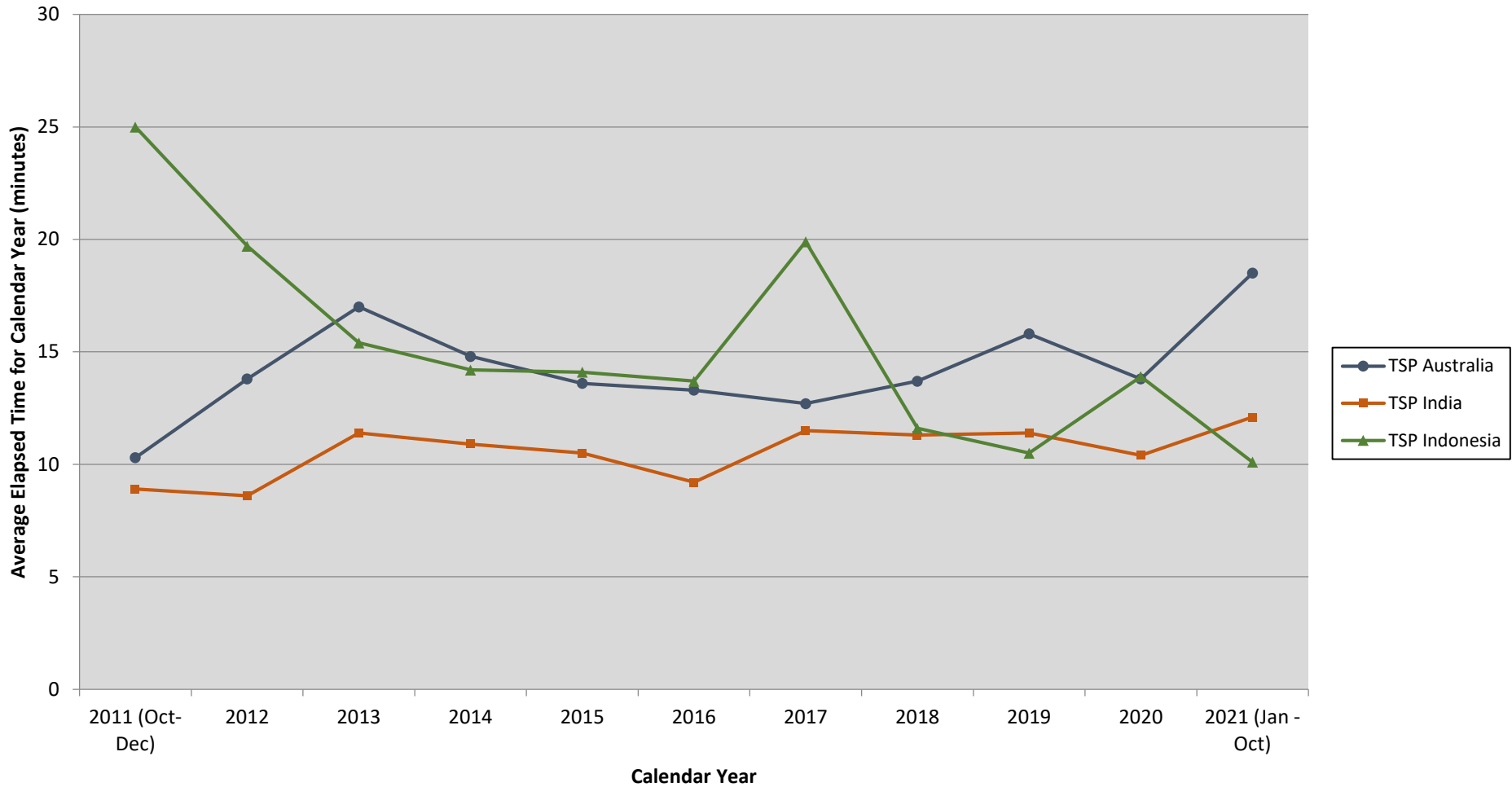
KPI 7: No events caused threat-level tsunami waves.

KPI 8: Based on 4 observations in CFZ's from the 12 Aug South Sandwich Islands event

Meets Target	Near Target	Misses Target
-----------------	----------------	------------------

Earthquake Bulletin Issue Times All TSPs

**IOTWMS-TSP Earthquake Bulletin Issue Time Averages
(elapsed minutes after earthquake)
KPI 1: Target ≤ 10 minutes**



TSP Earthquake Bulletins (SL1) and Threat Bulletins (SL2) – All Years

Year	TSP Australia				TSP India				TSP Indonesia			
	Number Issued		Av. Time (mins)		Number Issued		Av. Time (mins)		Number Issued		Av. Time (mins)	
	SL1	SL2	SL1	SL2	SL1	SL2	SL1	SL2	SL1	SL2	SL1	SL2
2011 (Oct-Dec)	11	2	10.3 55.6%	17 100%	9	1	8.9 60.00%	23 0.0%	5	3	25 50.00%	45 33.3%
2012	49	10	13.8 40.8%	24 40.0%	53	5	8.6 87.20%	20 60.0%	29	1	19.7 33.30%	24 0.0%
2013	58	6	17 5.2%	18.5 66.7%	54	4	11.4 40.50%	22.5 0.0%	35	0	15.4 29.00%	n/a
2014	61	4	14.8 25.0%	19 50.0%	50	1	10.9 50.00%	15 0.0%	37	0	14.2 18.20%	n/a
2015	56	7	13.6 31.6%	20.5 50.0%	35	0	10.5 78.10%	n/a	32	0	14.1 34.60%	n/a
2016	51	13	13.3 13.7%	18.4 71.4%	35	5	9.2 74.30%	20.6 40.0%	36	1	13.7 42.40%	90 0.0%
2017	40	4	12.7 22.5%	15.5 75.0%	30	3	11.5 46.7%	27.3 0.0%	27	1	19.9 40.7%	190 0.0%
2018	32	2	13.7 12.5%	22.0 50.0%	30	1	11.3 40.9%	25.0 0.0%	39	1	11.6 64.1%	38 0.0%
2019	31	3	15.8 16.1%	23.0 33.3%	25	2	11.4 40.0%	25.5 0.0%	30	4	10.5 61.9%	27 62.5%
2020	20	3	13.8 10.0%	21.7 66.7%	17	1	10.4 55.6%	25.0 0.0%	21	2	13.9 45.0%	46.7 0.0%
2021 (Jan - Oct)	37	6	18.5 16.2%	34.0 33.3%	23	1	12.1 90.0%	29.0 0.0%	29	1	10.1 68.9%	33 0.0%
Total	446	60			361	24			320	14		
Average	44.2	6.0	14.6 21.3%	21.5 56.3%	35.8	2.4	10.6 60.5%	21.6 20.8%	31.7	1.4	14.4 43.6%	50.8 25.0%

Thank you!

Patanjali Kumar Chodavarapu

INCOIS

patanjali@incois.gov.in



unesco

Intergovernmental
Oceanographic
Commission