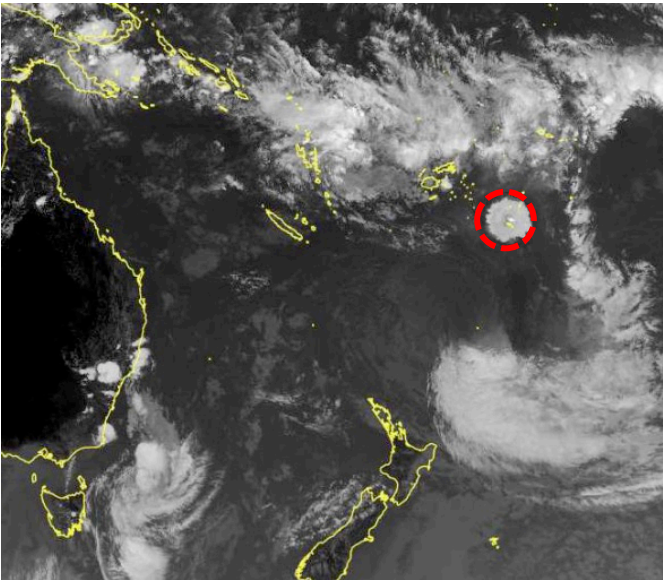
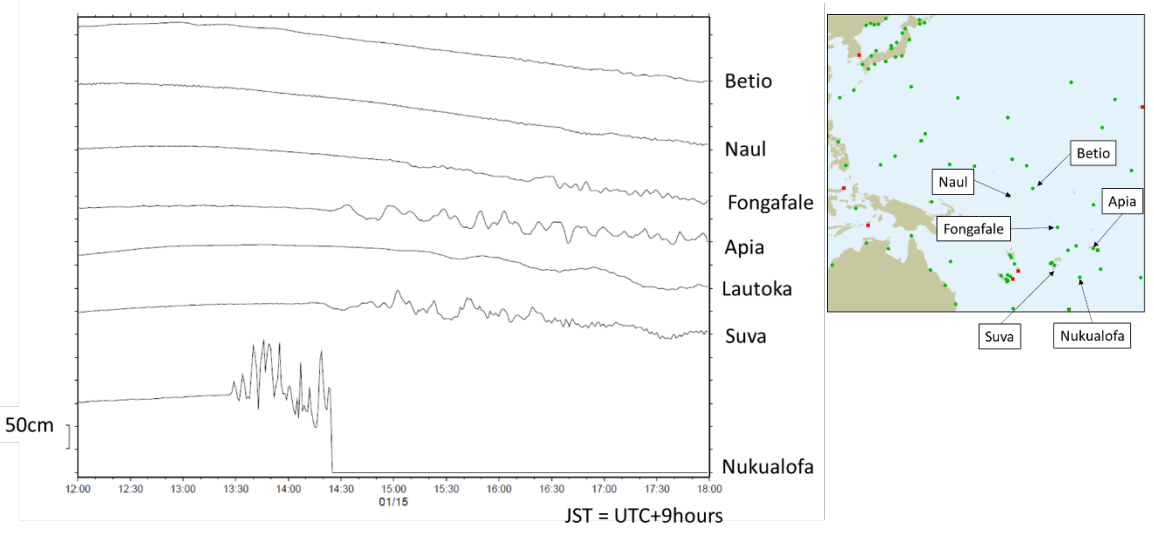


JMA's operations against sea level changes caused by Hunga-Tonga Hunga-Ha'apai Eruption

Satellite image of eruption by JMA'S Meteorological Satellite (Himawari), as of January 15th 14:00 JST = UTC+9hours

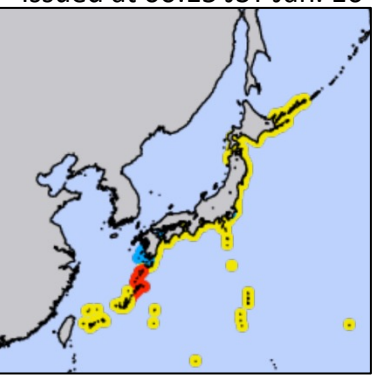


Sea level changes of overseas gauges

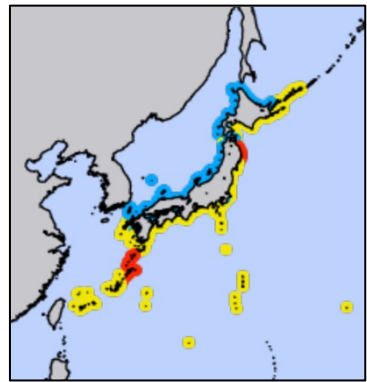


Warning/Advisory issued by JMA

Issued at 00:15 JST Jan. 16

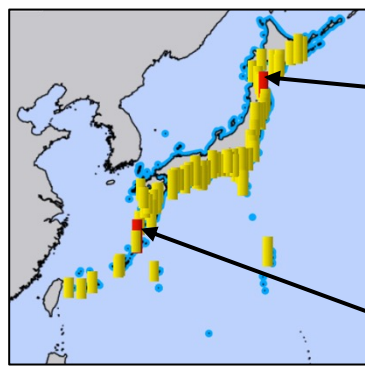


Issued at 02:54 JST Jan. 16

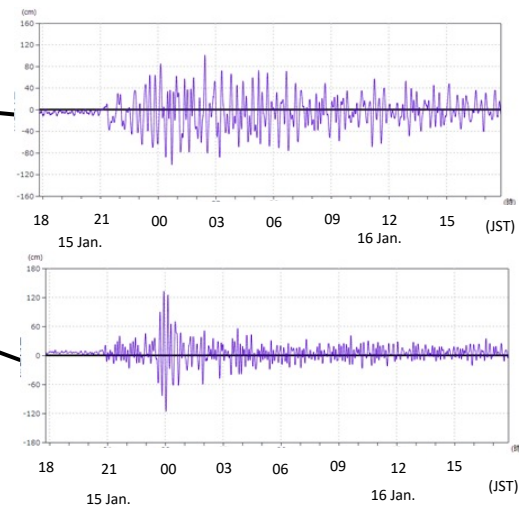


- Major Tsunami Warning (>3m)
- Tsunami Warning (1m - 3m)
- Tsunami Advisory (0.2m - 1m)
- Tsunami Forecast (Slight sea level changes) (0.2m <)

Maximum observed height, as of 14:00 JST Jan. 16

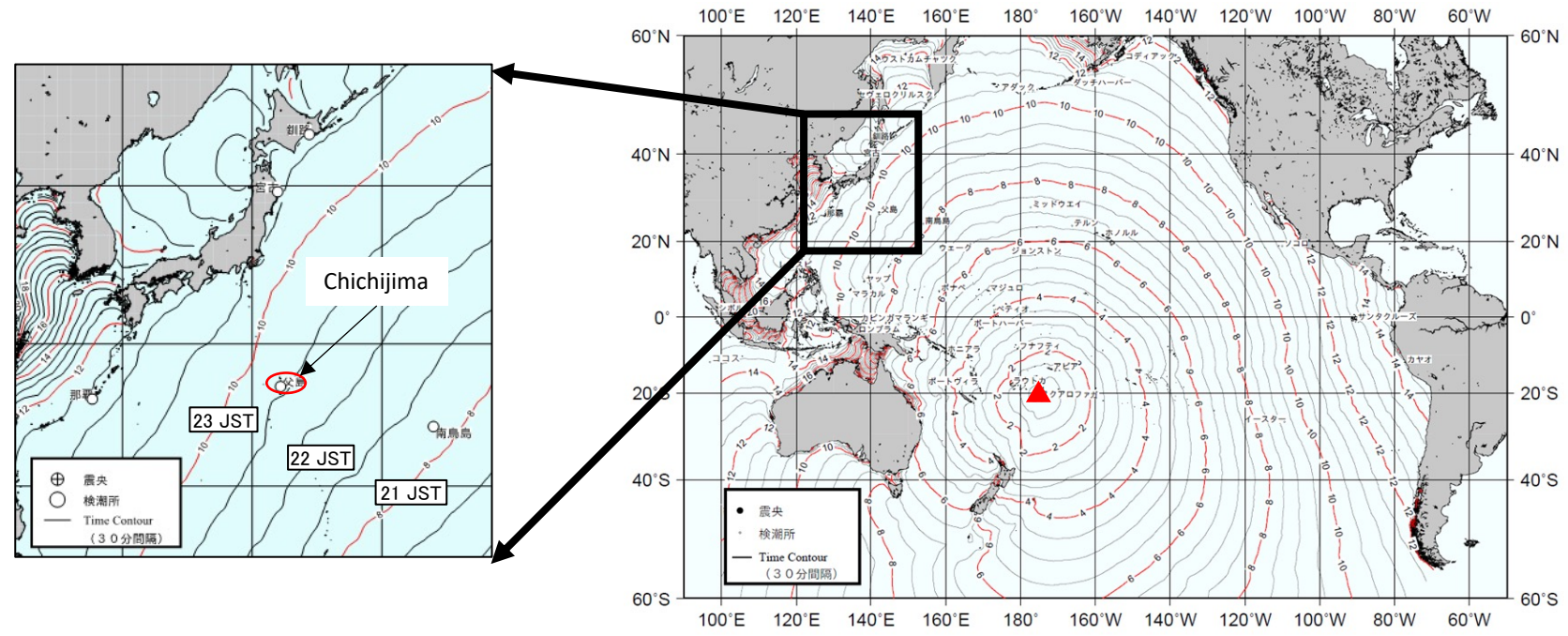


- 3 m or less
- 1 m or less
- Less than 0.2 m

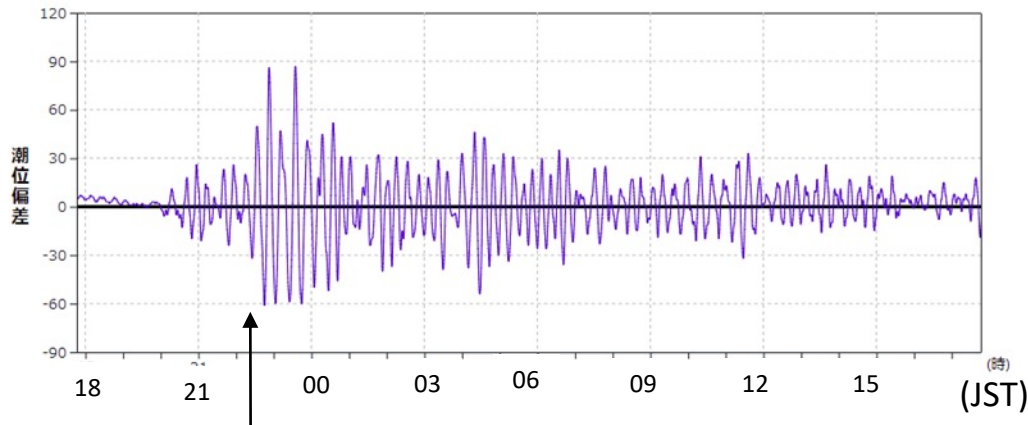


Estimated tsunami arrival to Japan and atmospheric pressure changes

Tsunami travel time map



Sea level changes at Chichijima



Estimated arrival at Chichijima based on tsunami travel time map

Atmospheric pressure changes at Chichijima

