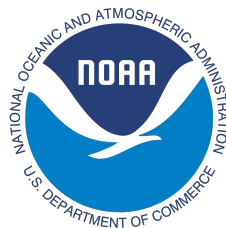


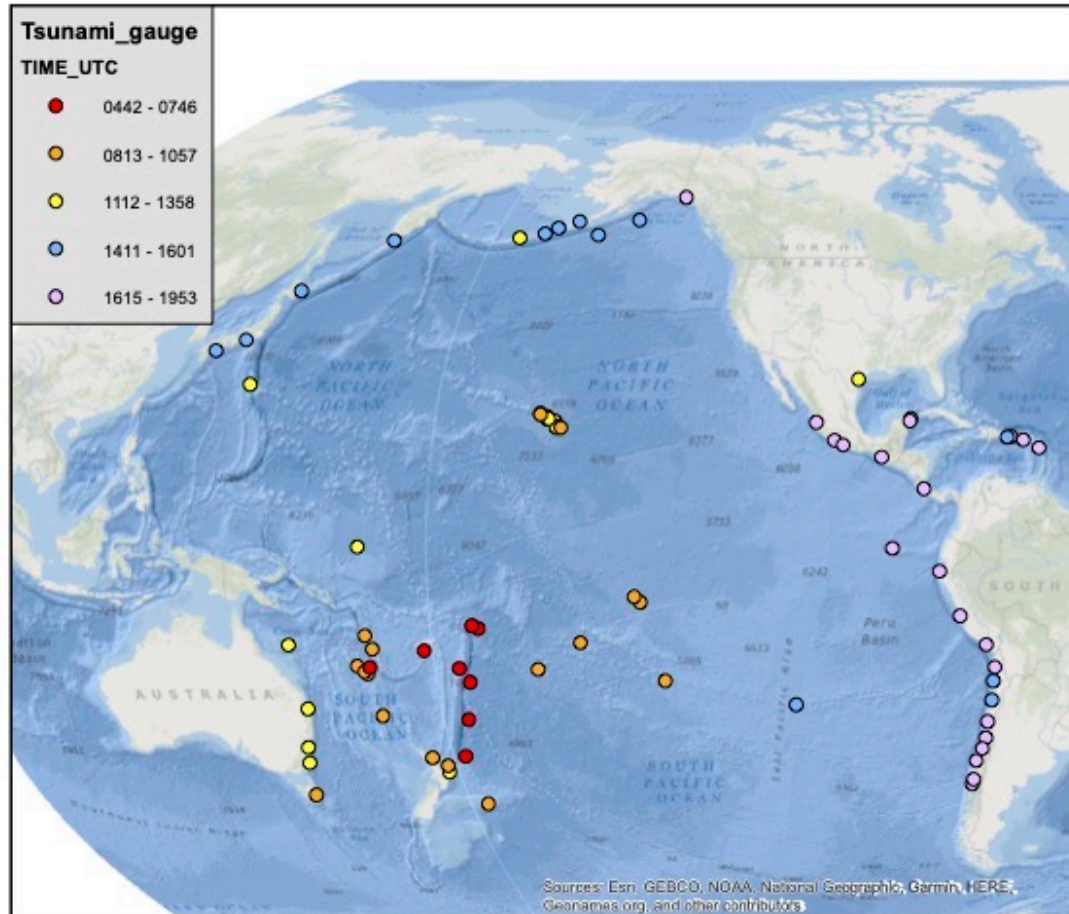
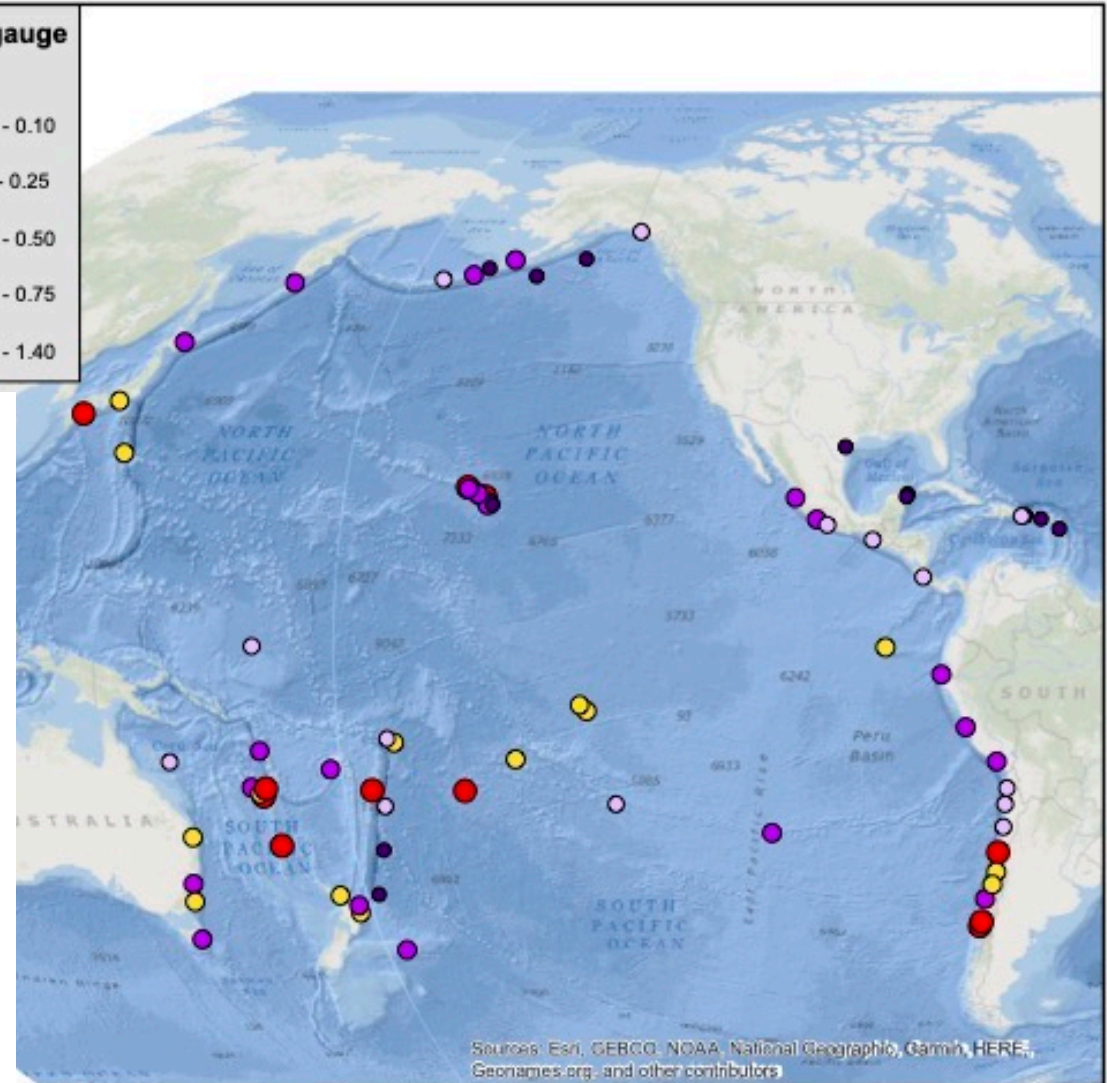
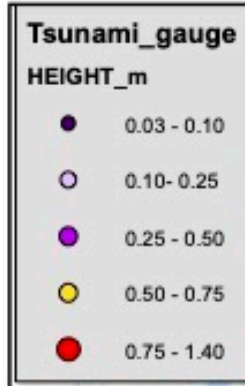
# Eruption, seismicity, tsunami

Bill Fry and Charles McCreery, WG2



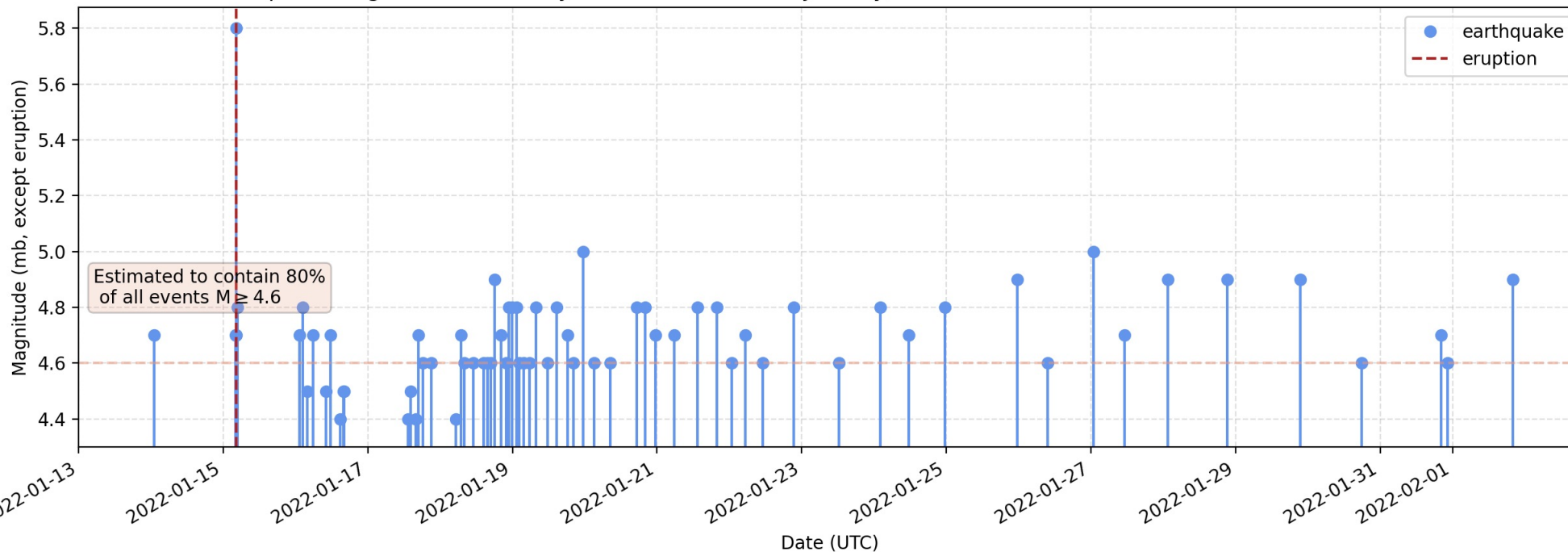
Te Whakaahuatanga Tere o ngā  
**R-CET**  
Rū Whenua me ngā Parawhenua

# 15 Jan observations reported by PTWC

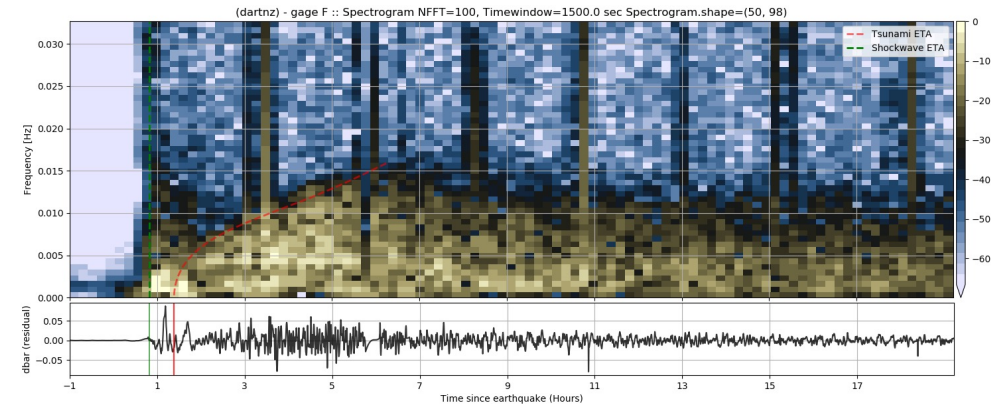


- No evidence of further volcanic eruptions has been observed in the last 14 days
- Plume observed earlier this week was likely convective cloud (VAAC assessment)
- 66 shallow earthquakes  $>M4.5$  in the area since beginning of January

USGS NEIC earthquake magnitudes in vicinity of HT-HH since 2022 January, at 2022-02-02 20:58 UTC



Volcanic  
update



- First arriving waves originated at volcano
- Evidence for atmospheric driven first arrival → difficult to forecast

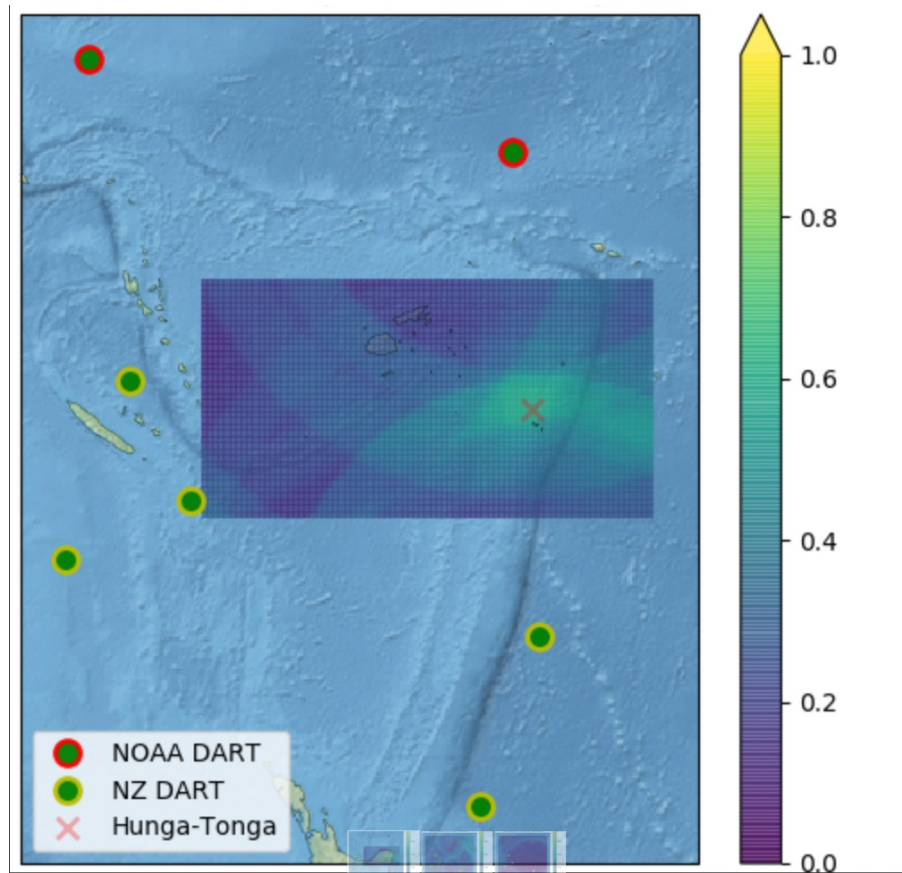


Fig courtesy Anthony Jamelot

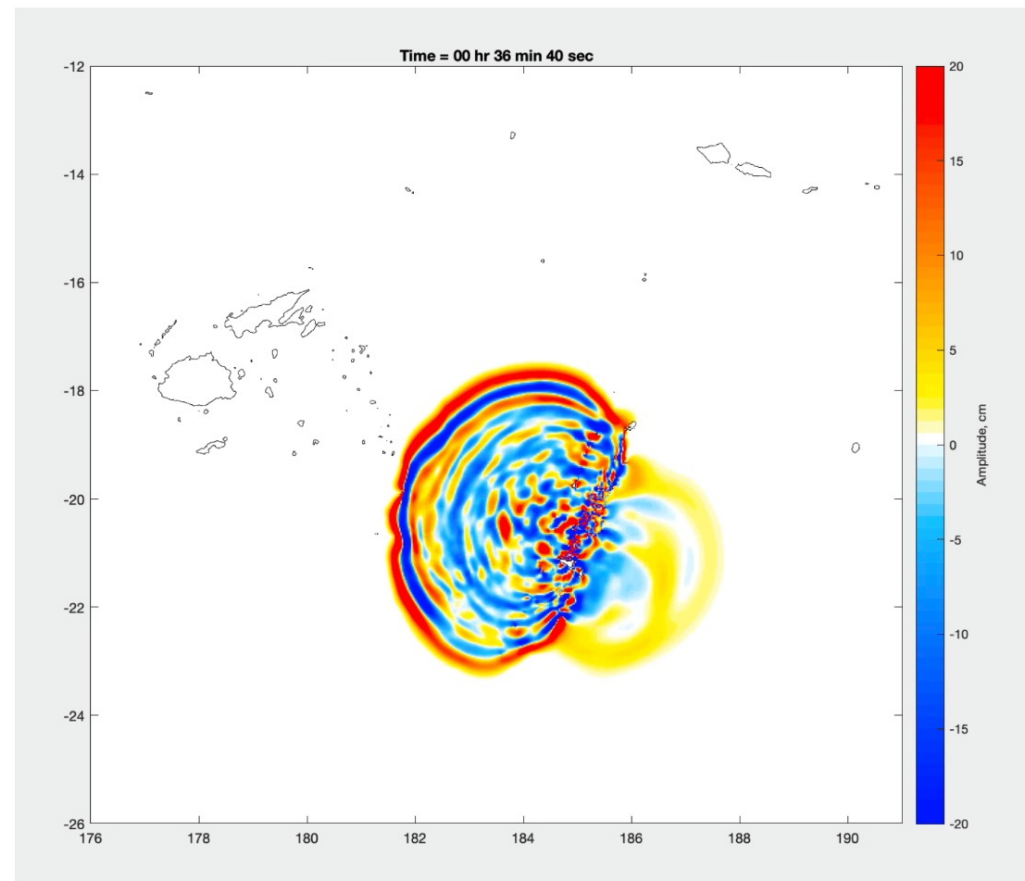


Fig courtesy Aditya Gusman

# Ongoing WG 2 efforts

- Improve HTHH monitoring for subsequent possible tsunamigenic events
- Improve generic non-earthquake tsunami forecasting
- Highlight network gaps and complementary data streams
- Support the coordination of multinational science response through the provision of monitoring advice