



Funded by  
European Union  
Humanitarian Aid



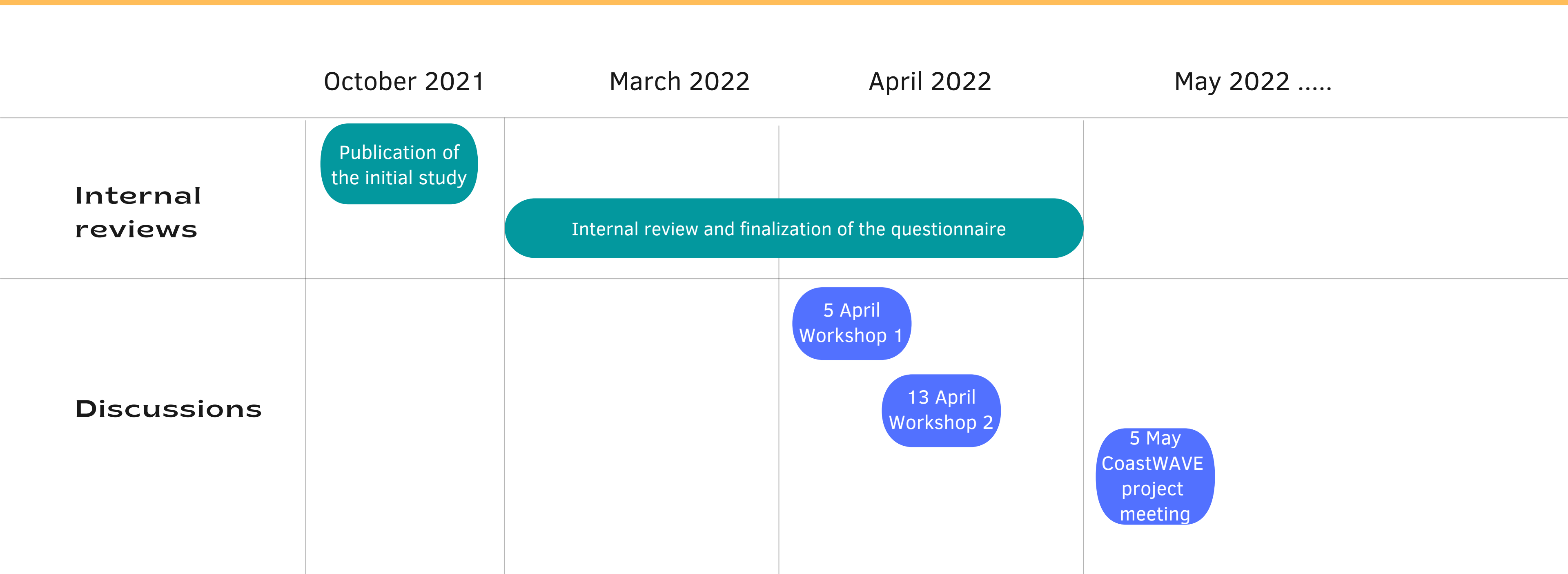
COASTWAVE DG ECHO PROJECT  
NEAMTWS

# Sea Level Related Hazard Risk Perception Questionnaire

Presented by Claire Jaffrézic



# Timeline for the Questionnaire



October 2021

March 2022

April 2022

May 2022 .....

**Internal reviews**

Publication of the initial study

Internal review and finalization of the questionnaire

**Discussions**

5 April Workshop 1

13 April Workshop 2

5 May CoastWAVE project meeting

# Target Groups

## Education

Teachers, students  
(except under the  
age of 14)

## Tourism sector

Restaurant-bar,  
hotel owners,  
employees of these  
sectors, guides, etc.

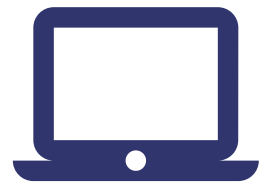
## Emergency Responders

Fire fighters, police,  
coast guard, civil  
protection agencies  
etc.

## Public

People who are not  
part of the other  
three sectors

# Proposed methods for survey implementation



**Method 1  
Online Survey**



**Method 2  
CATI -  
Computer  
Assisted  
Telephone  
Interviewing**



**Method 3  
Street  
Interviews**



**Method 4  
Booth Survey**



**Method 5  
Focus group**

# Recommended Methods of Implementation by Target Groups



**Method 1: Focus group**

Teachers

Emergency Responders

Tourism sector

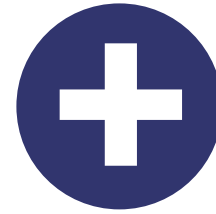


**Method 2: Online survey**

Students

Public

# Focus Group

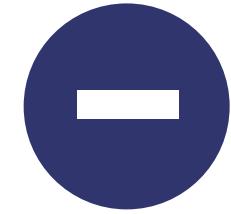


## Advantages

Open-ended, open to exploration

Help discover other salient points that have been missed

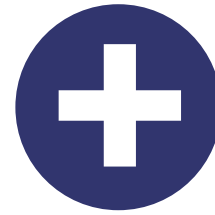
Allows to promote TR, CoastWAVE project etc.



## Disadvantages

True thoughts and experiences might not be communicated (group pressure)

# Online Survey



## Advantages

Faster in acquiring feedback

Fast and real-time analysis of the results

Cost efficient

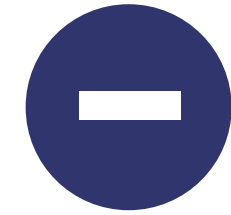
Minimum margin of error: no mediator

Save time - Convenient to answer

Anonymous

Easy to distribute (email, QR code etc.)

Can be used in focus groups



## Disadvantages

Many online surveys already exist

Limited access to certain sections of populations