

TSUNAMI READY COMMUNITY TONGA

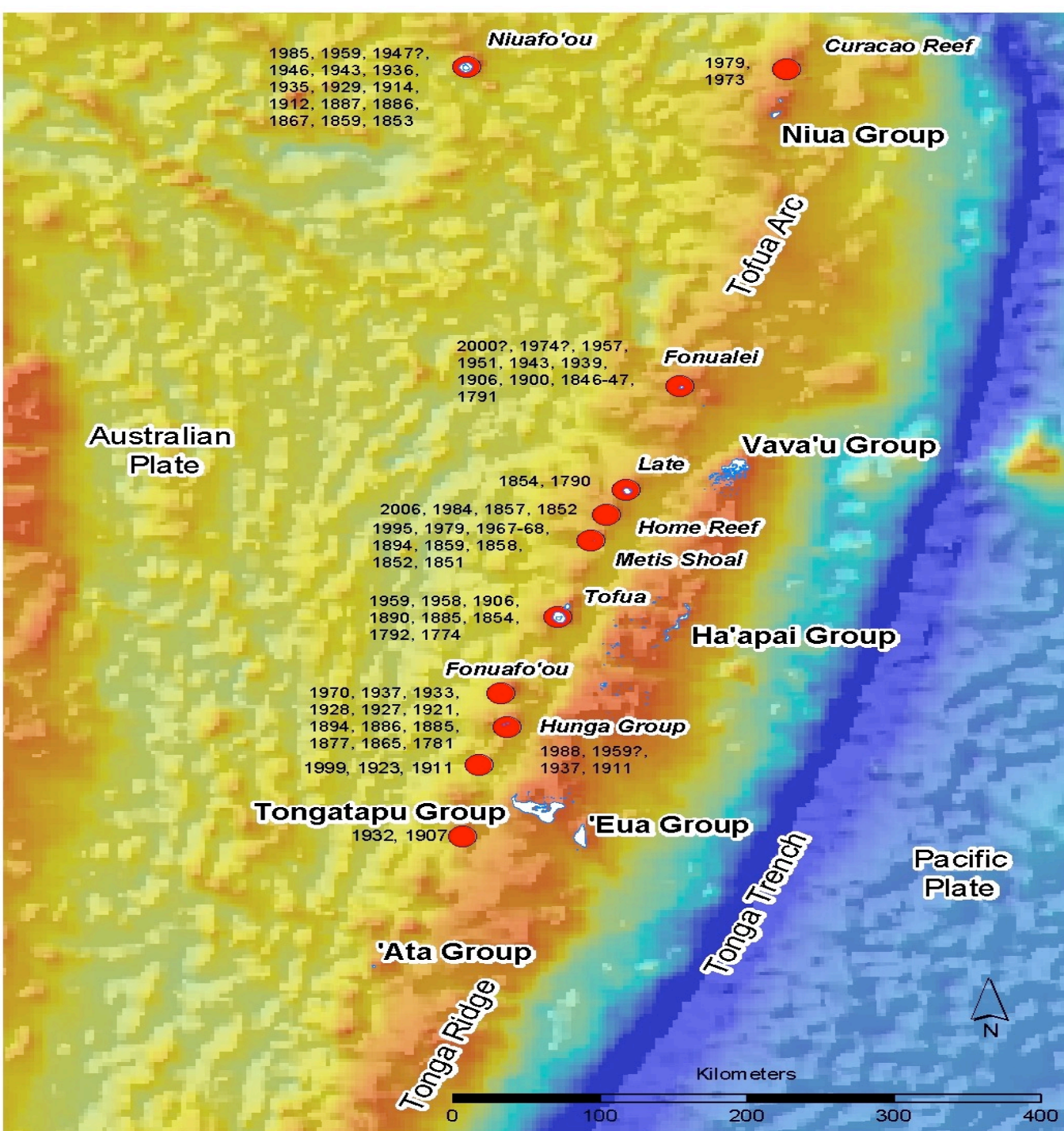


PTWS Regional Working Group on Tsunami Warning &
Mitigation for Pacific Island Countries and Territories
(WG-PICT-IX, 3-4 Feb, 2023)

OUTLINE



- Tsunami Ready Communities
- What is in place
 - Institutional Arrangements & Community Engagements
 - Tsunami Sign Boards & Evacuation Routes
 - Tsunami Drills
 - Hazard Maps
 - Information, Education & Communication Resources



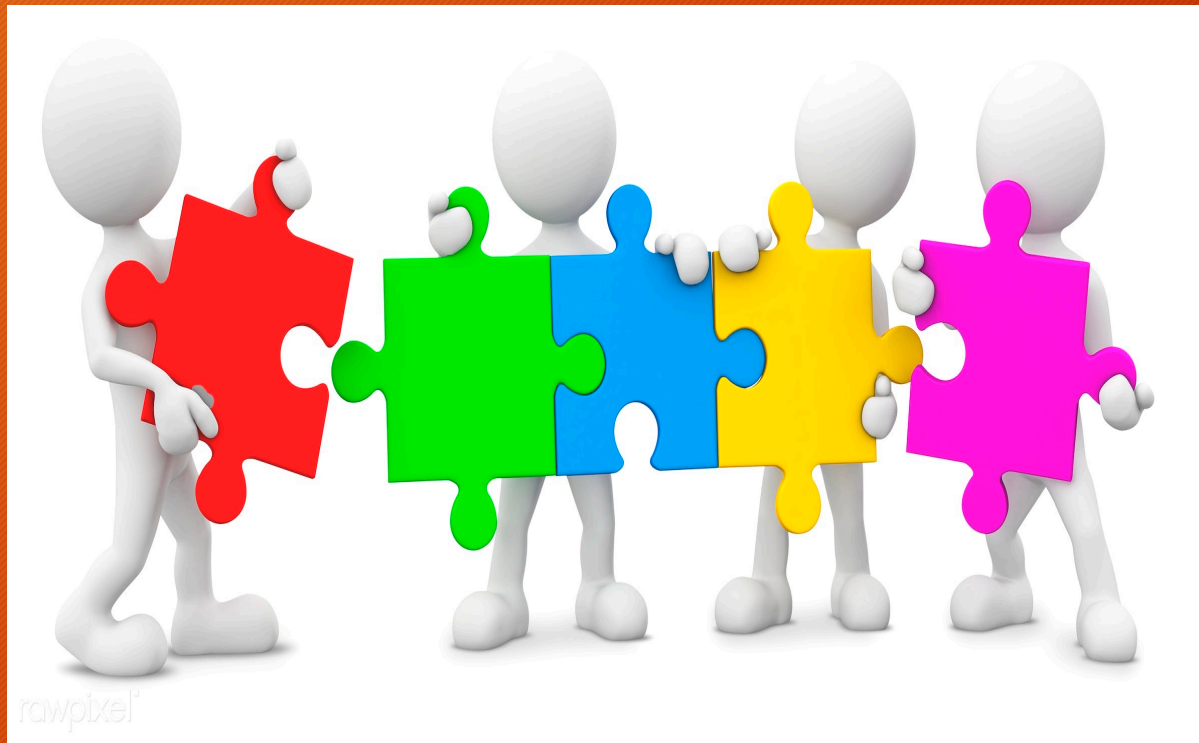
Tsunami Ready Communities



| Island Group | Number of Communities |
|--------------|-----------------------|
| Tongatapu | 16 |
| 'Eua | 2 |
| Ha'apai | 13 |
| Vava'u | 5 |
| Niua's | 2 |
| Total | 38 |

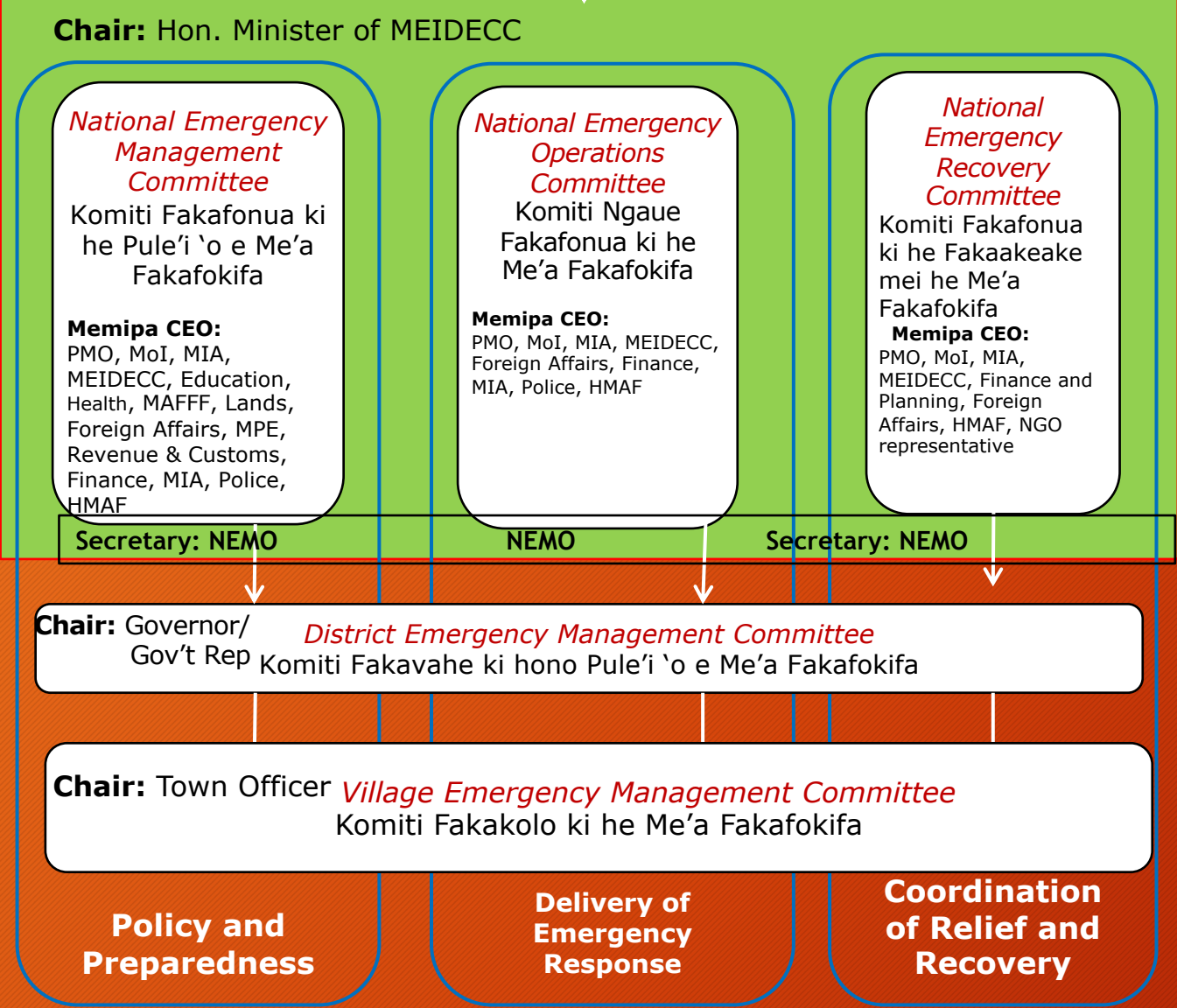
* Note: While the numbers seem ambitious, the approach will be divided into phases as some initiatives are already in place

What is in place



*National Disaster Council
(CABINET)*
Kosilio Fakafonua ki he
Me'a Fakafokifa

Institutional Arrangements



NEMP

DEMP

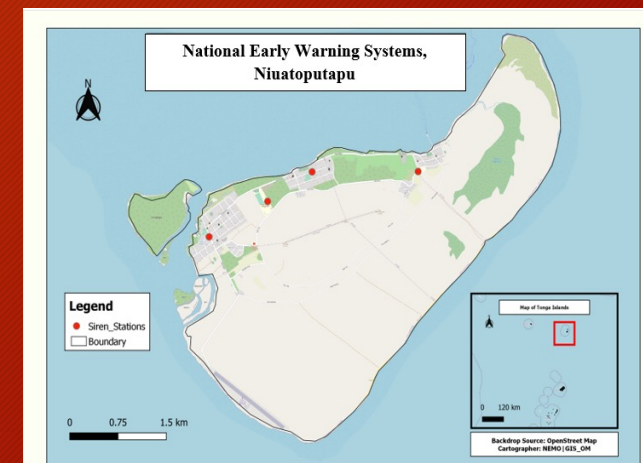
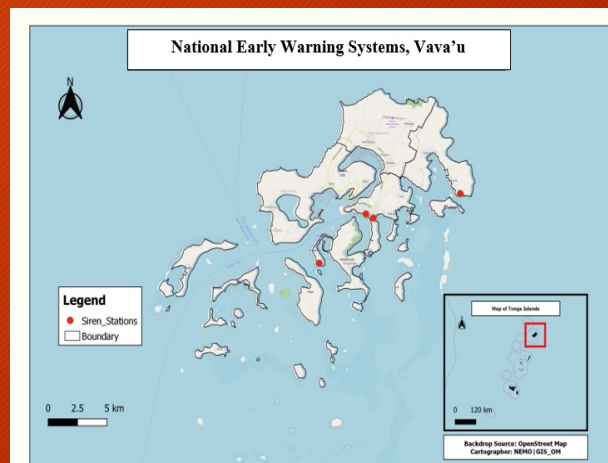
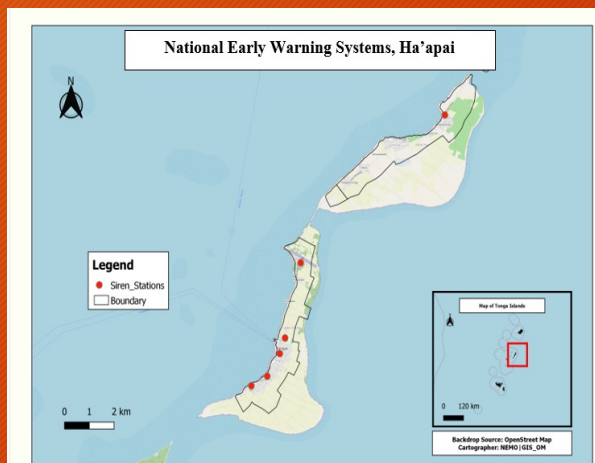
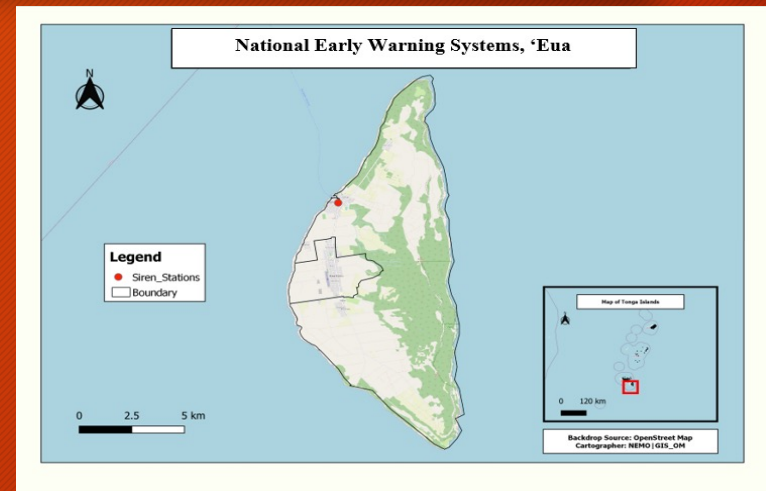
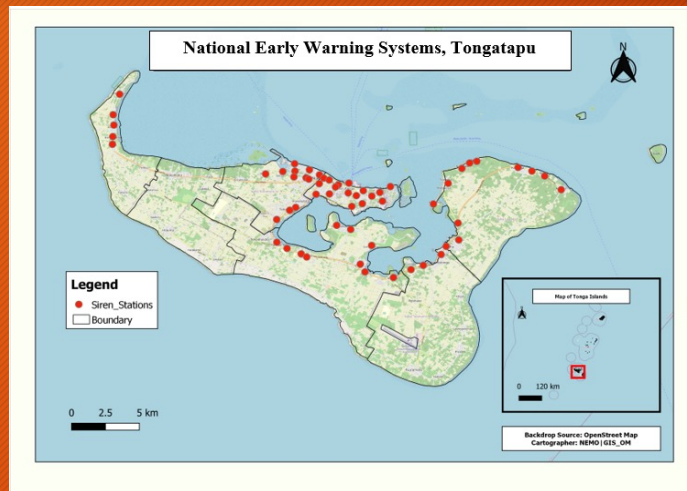
VEMP

- Built upon the existing national arrangement; the existing institutions at the national, district and community level.
- Communities have their own Village Emergency Management Plans, SOPs
- The Tsunami Ready Community Training indicator to identifies the gaps that must be completed in order to be identified as a tsunami ready community

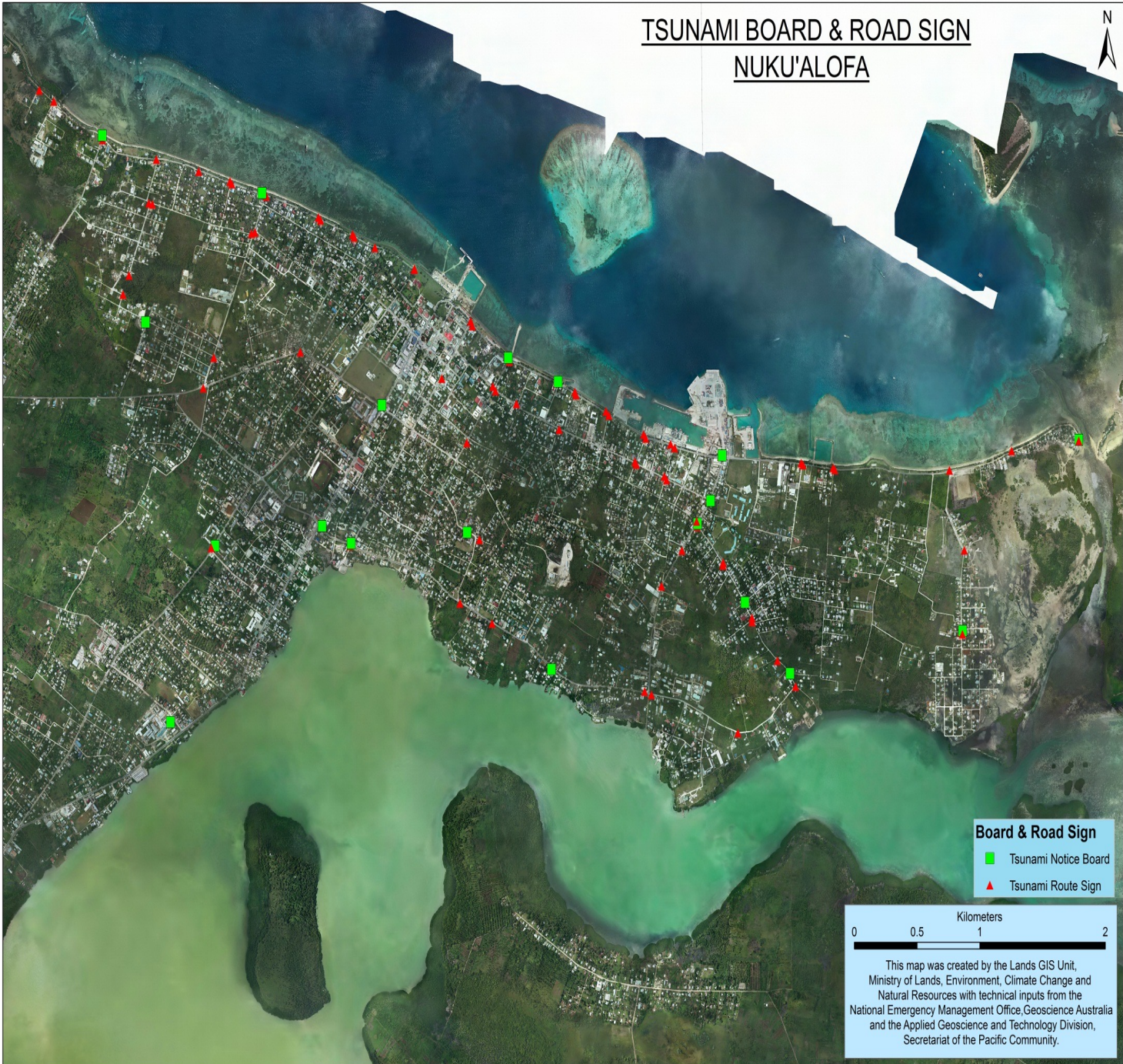
National Early Warning System



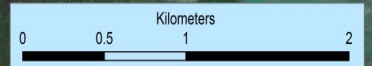
| Location | Quantity |
|--------------|-----------|
| Tongatapu | 60 |
| 'Eua | 1 |
| Ha'apai | 6 |
| Vava'u | 4 |
| Niuatoputapu | 4 |
| TOTAL | 75 |



TSUNAMI BOARD & ROAD SIGN
NUKU'ALOFA



Board & Road Sign
■ Tsunami Notice Board
▲ Tsunami Route Sign



This map was created by the Lands GIS Unit,
Ministry of Lands, Environment, Climate Change and
Natural Resources with technical inputs from the
National Emergency Management Office, Geoscience Australia
and the Applied Geoscience and Technology Division,
Secretariat of the Pacific Community.

Tsunami Sign Board & Route Signs



| Location | Identified Funding |
|---------------------------------------|--------------------|
| Tongatapu | NEMA |
| Outer Islands (HP, VV, Eua & Niua) | PREP |

TSUNAMI DRILLS





*Exercise Piha: 2013
Vahe Hahake
Nukuleka - Afa*

*Exercise Safely to
Safety: 2017
GPS Kolomotu'a*

*Exercise Safely to Safety: 2021
Lifuka Schools
EOC at Ha'apai*



Pictures 3 & 4: Children from the GPS Pangai evacuating their classrooms and following their evacuation route to their assemble zones



Picture 5 & 6: Students from Tailulu and St. Joseph Colleges evacuating their school premises and following their evacuating routes to the assemble areas.



Pictures 7 - 10: Teachers from GPS Tongaleleka, Ha'apai High School, St. Joseph College, Tailulu College and GPS Pangai taking roll and final head count at each of their respective assemble areas.



Picture 11 - 13: First Responders from the Tonga Red Cross Society, His Majesty's Armed Forces, and Tonga Fire & Emergency Services helping distress students/child get to the assemble areas

GPS Tongaleleka, GPS Pangai, GPS Koulo, Ha'apai High School, Tailulu College and St. Joseph College students were the participants, with the First Responders supporting in the safe evacuation from the physical locations to the meeting points/assembly areas, with Tonga MET supporting with the broadcasting. Further instruction was disbursed by EOC in Lifuka.

Ha'apai's EOC was staffed by NEMO, the First Responders, MEIDECC Officers and volunteer officers from the Governor's Office and the Ministry of Revenue and Customs.



On Friday 5th November 2021, the World Tsunami Day was marked with program conducted by the Geo-Hazards Unit of Ministry of Land and Natural Resources, with the support of NEMO (with key focus on disaster risk management – prevention, mitigation, preparedness, response, recovery) and Tonga MET (with key focus on early warning systems).

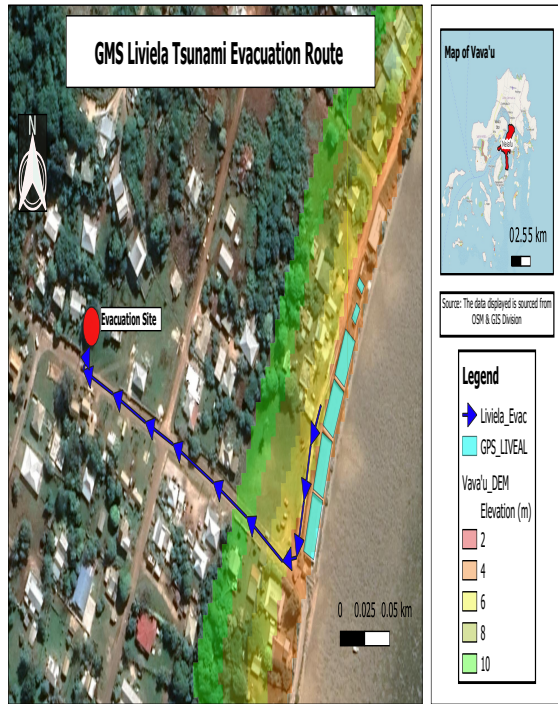


The exercise was made possible with the collaboration of all emergency agencies – HMAF, Tonga Police, Tonga Fire & Emergency Services, NEMO, Tonga Meteorological Services.



Highlights of Safely to Safety Tsunami Drill 2022

GPS Lifuka, Vava'u



GPS Nukuleka & GPS Navutoka









Tsunami Drill at Tongatapu

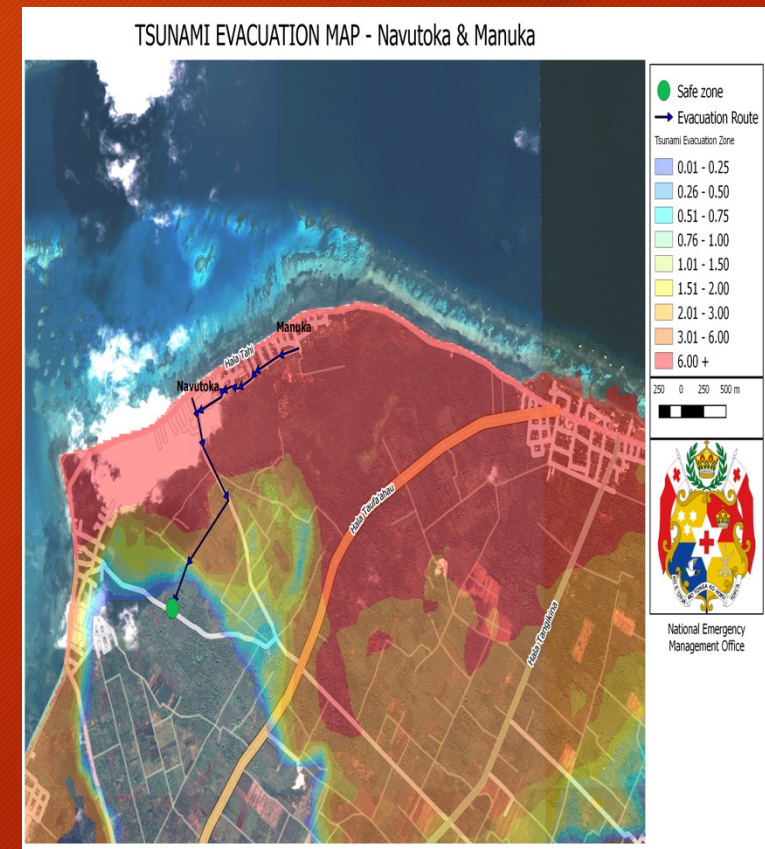


Tonga Meteorological Centre

Emergency Operation Centre



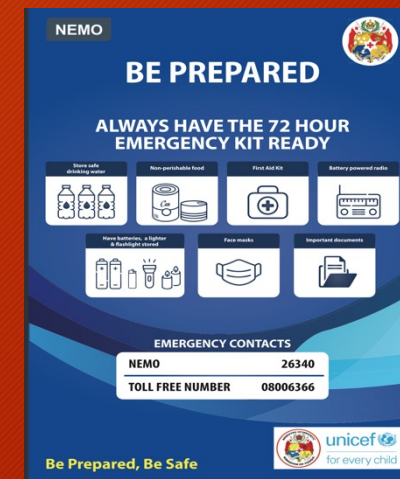
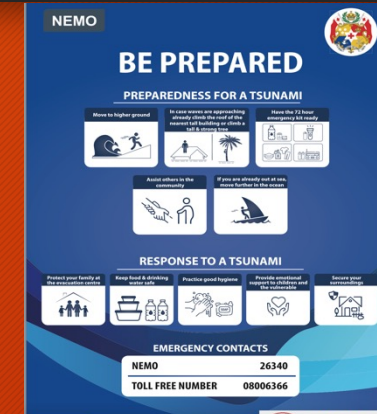
Tsunami Hazard Maps



Information, Education & Communication Materials



| IEC Materils | Status | Way Forward |
|--|---|--|
| <ul style="list-style-type: none"> 1 minute Radio Jingles (English, Tongan, Japanese, Fijian) | Completed (currently on broadcast) | <ul style="list-style-type: none"> Mandarin French |
| 1 minute videos | Completed - Local television, line ministries and private sectors | <ul style="list-style-type: none"> Translation into Fijian, Japanese and Fijian. Tsunami Sign Boards sensitizaiton |
| Social media tiles | Completed | Upload onto social media |
| Brochures | Completed | Printing and dissemination |
| phamplets | Completed | Printing and dissemination |
| Tsunami Sign Boards | Ongoing | installation |
| Banners | Completed | Printing and dissemination |
| Posters | Completed | Printing and dissemination |



Funded by UNICEF
* Foreign Missions to Tonga assisted with the translations

Tsunami Video Clips





Malo 'Aupito