

*ICG/IOTWMS Working Group 1 Meeting  
18 April 2023*



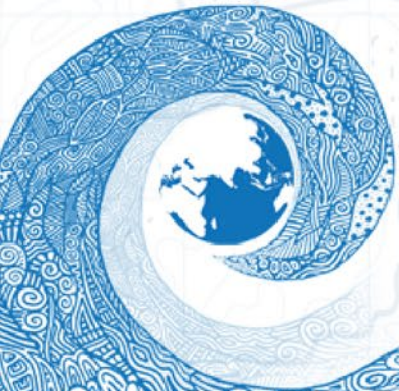
# **Capacity Assessment of Tsunami Preparedness in the Indian Ocean: Status Report, 2018**

## **Recommendations to Working Groups 1**

***Nora Gale, ICG/IOTWMS Secretariat***

***Acknowledgements:***

***ICG/IOTWMS Task Team on Capacity Assessment of Tsunami Preparedness***

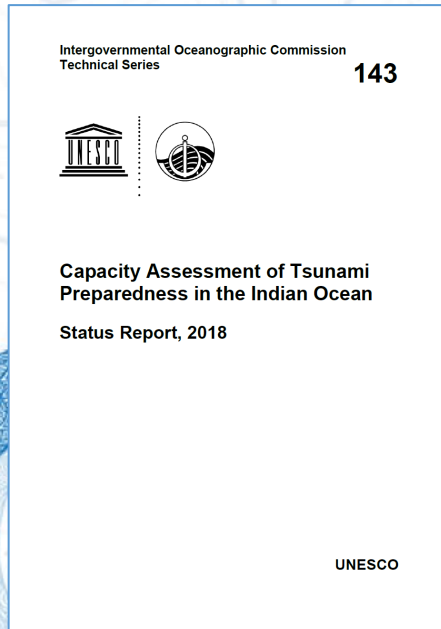


# INTRODUCTION

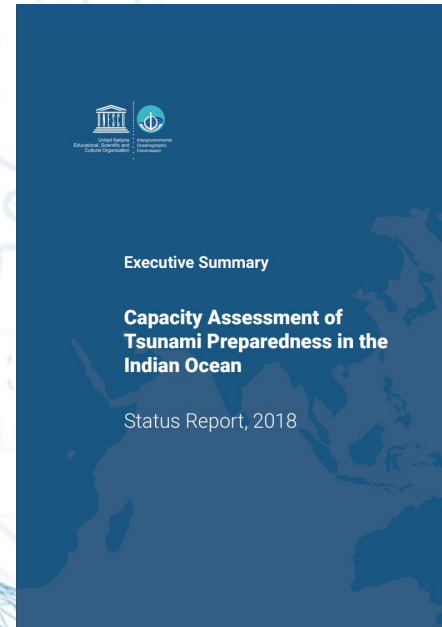
- The ICG/IOTWMS at its 11<sup>th</sup> session in Putrajaya, Malaysia (2017) decided to establish a Task Team to design and conduct an extensive online survey covering all aspects of the end-to-end tsunami warning and mitigation system.
- The 2018 assessment provides a new baseline of the status of tsunami preparedness capacity in the region.
- It is a follow-on study to the 2005 assessment where missions were conducted to 16 countries affected by the 2004 Indian Ocean Tsunami.
- The online survey forms the dataset for the 2018 Status Report on Capacity Assessment of Tsunami Preparedness in the Indian Ocean.
- 20 Indian Ocean countries have provided input to the Capacity Assessment

# IOC TS-143: Capacity Assessment of Tsunami Preparedness in the Indian Ocean (2018):

## Status Report



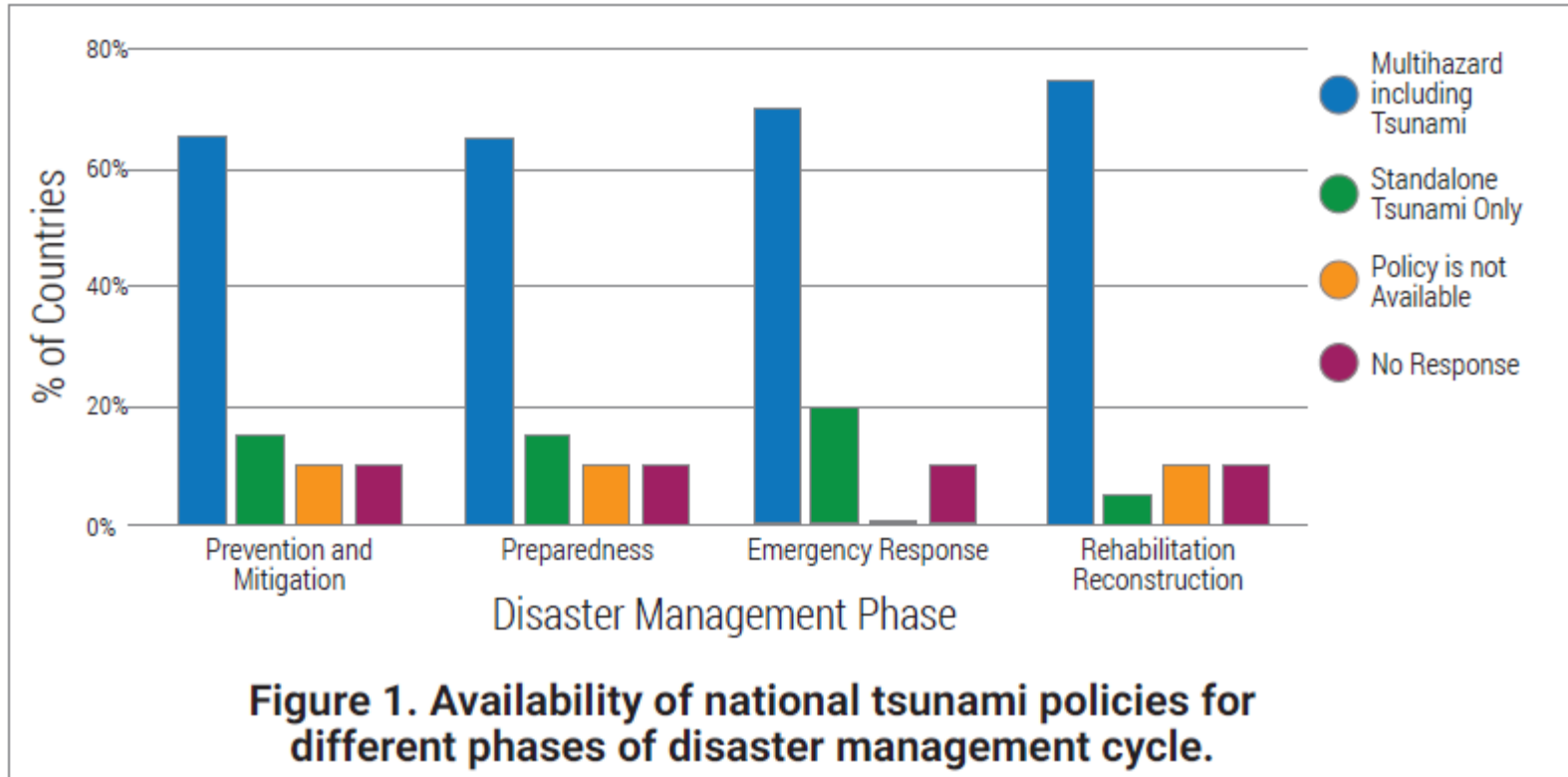
## Executive Summary



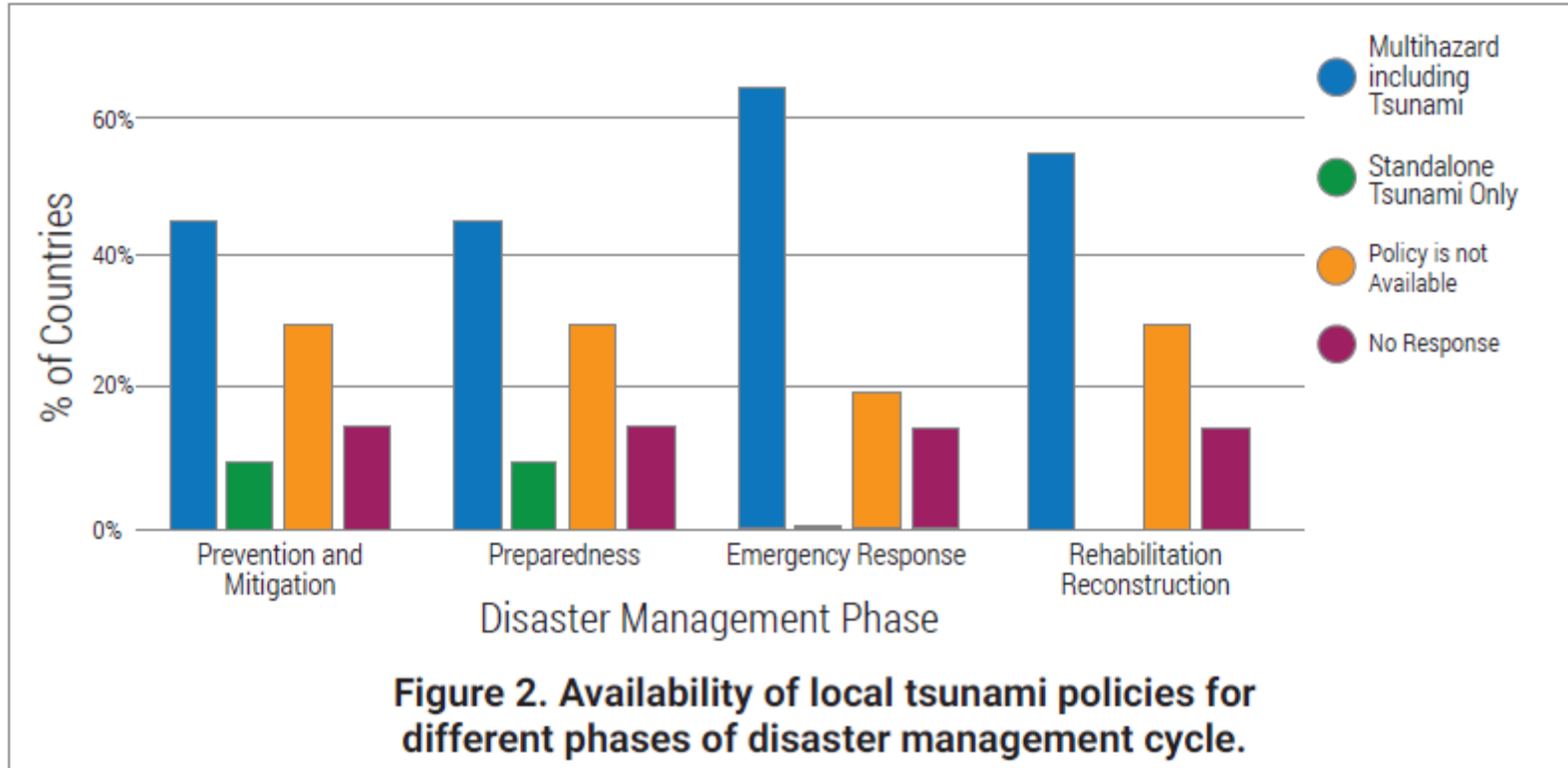
# 2018 CAPACITY ASSESSMENT REPORT

- The online survey include five sections: 1) Policies, plans and guidelines; 2) risk assessment and reduction; 3) detection, warning and dissemination; 4) public awareness, preparedness and response; 5) Recommendations to address policy gaps and support requirements
- The results indicate that there has been considerable improvement across all components of the IOTWMS since 2005
- It also identifies specific gaps and prioritises capacity development requirements at both regional and national levels
- A summary of each responding country is provided in Annex IV

# National Tsunami Policies



# Local Tsunami Policies



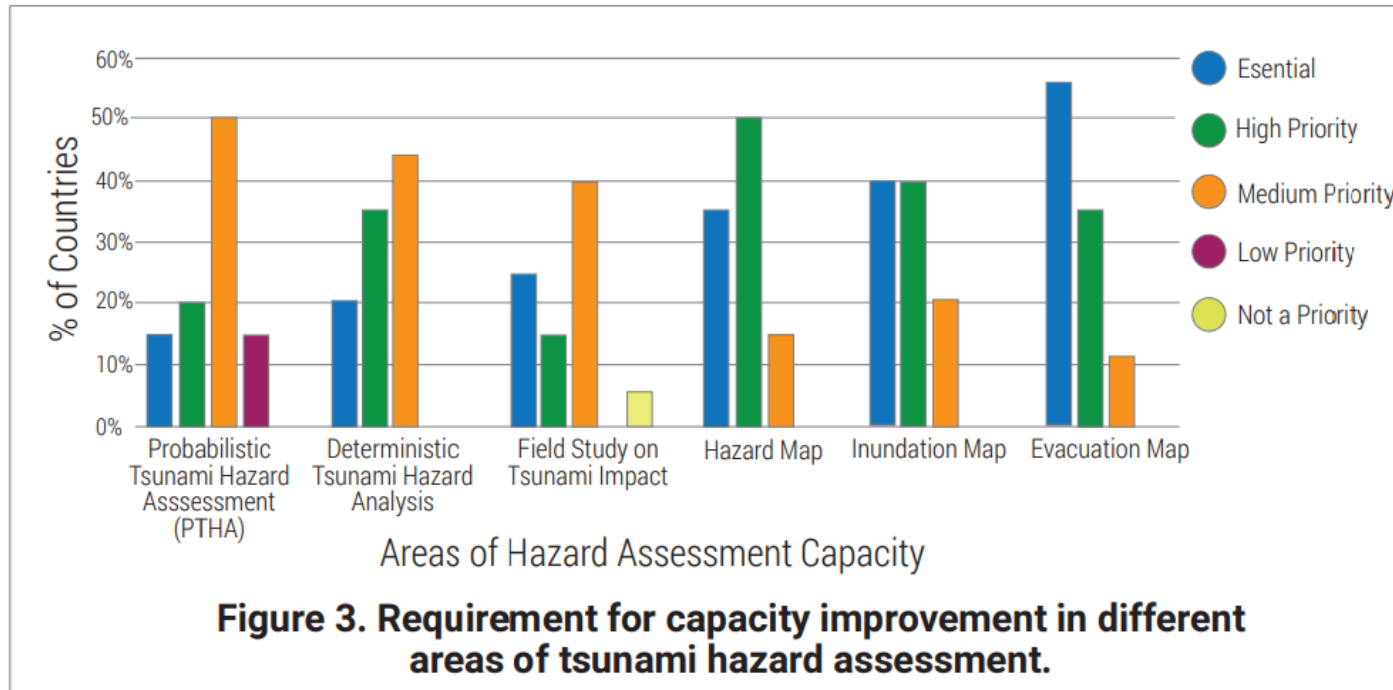
# Policies, Plans and Guidelines

Support is needed to increase the availability of policies, plans and guidelines, in particular:

- Across all ***disaster management cycle phases***:
  - Prevention & Mitigation
  - Preparedness
  - Recovery & Reconstruction
- Particularly at the ***local level***

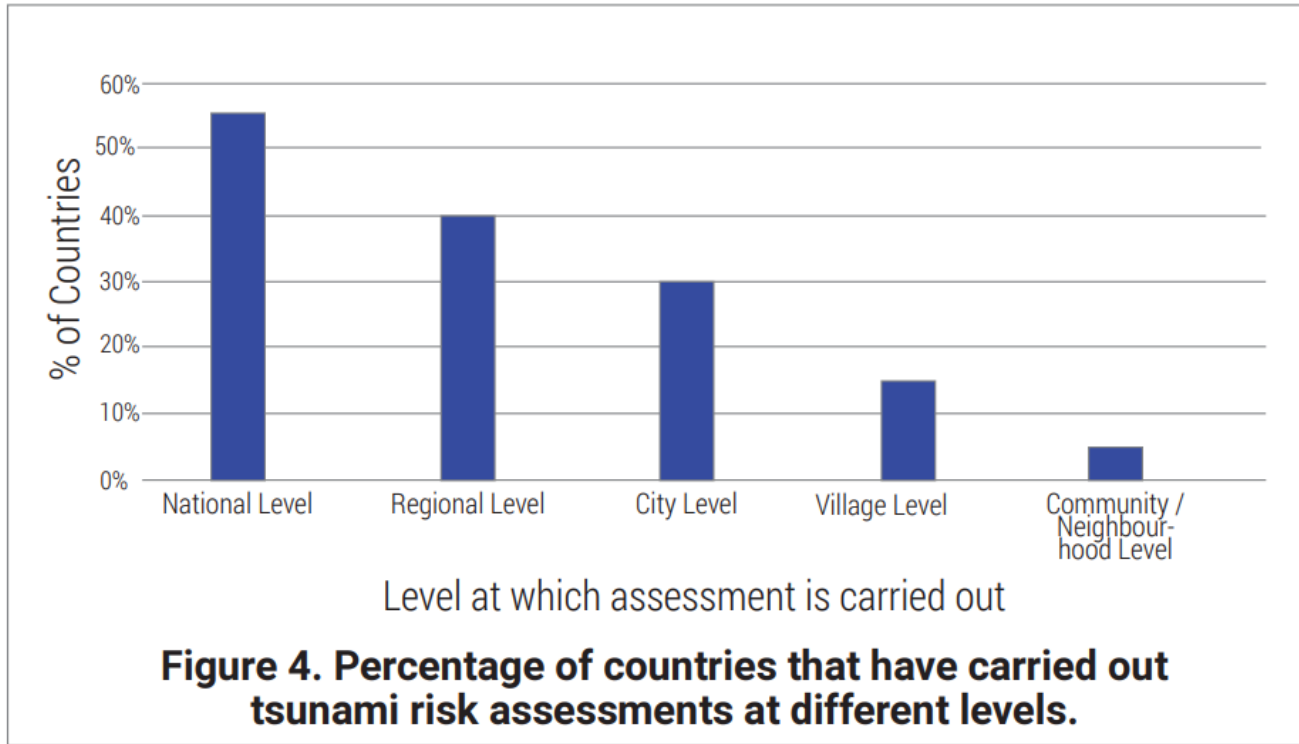


# Tsunami Hazard Assessment – Areas for Capacity Improvements





# Tsunami Risk Assessments – % Countries carried out



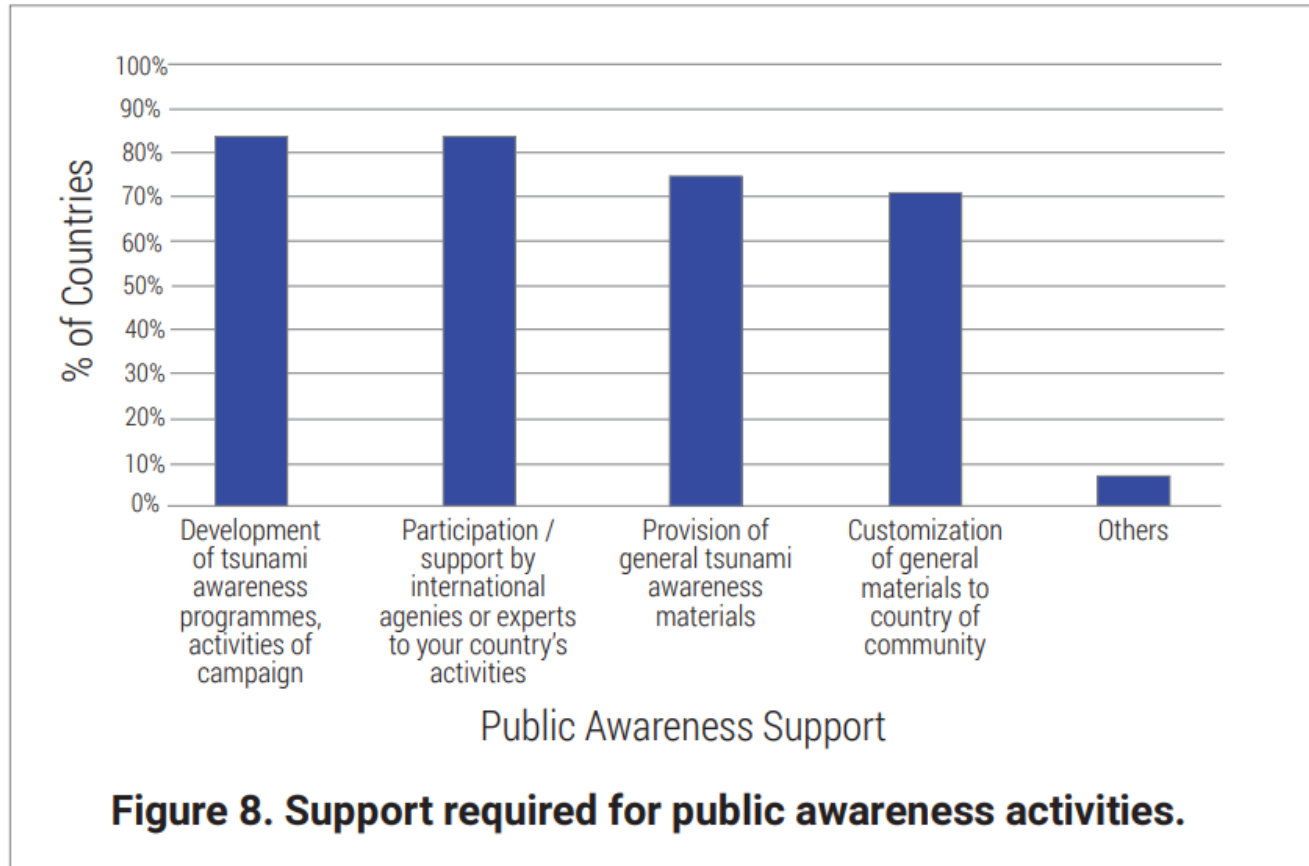
# Tsunami Hazard and Risk Assessments

Support requirements for tsunami hazard and risk assessments should focus on

1. Increasing the availability of ***accessible data*** for these assessments
2. Engaging and ***developing the capacity of more people*** to
  - Conduct the assessments
  - Develop products including risk maps, evacuation maps, guidelines, and action plans.
3. More risk assessments are required at ***local level*** : city, village, community



# Public awareness activities needing support



# Tsunami Ready Indicators: support requirements

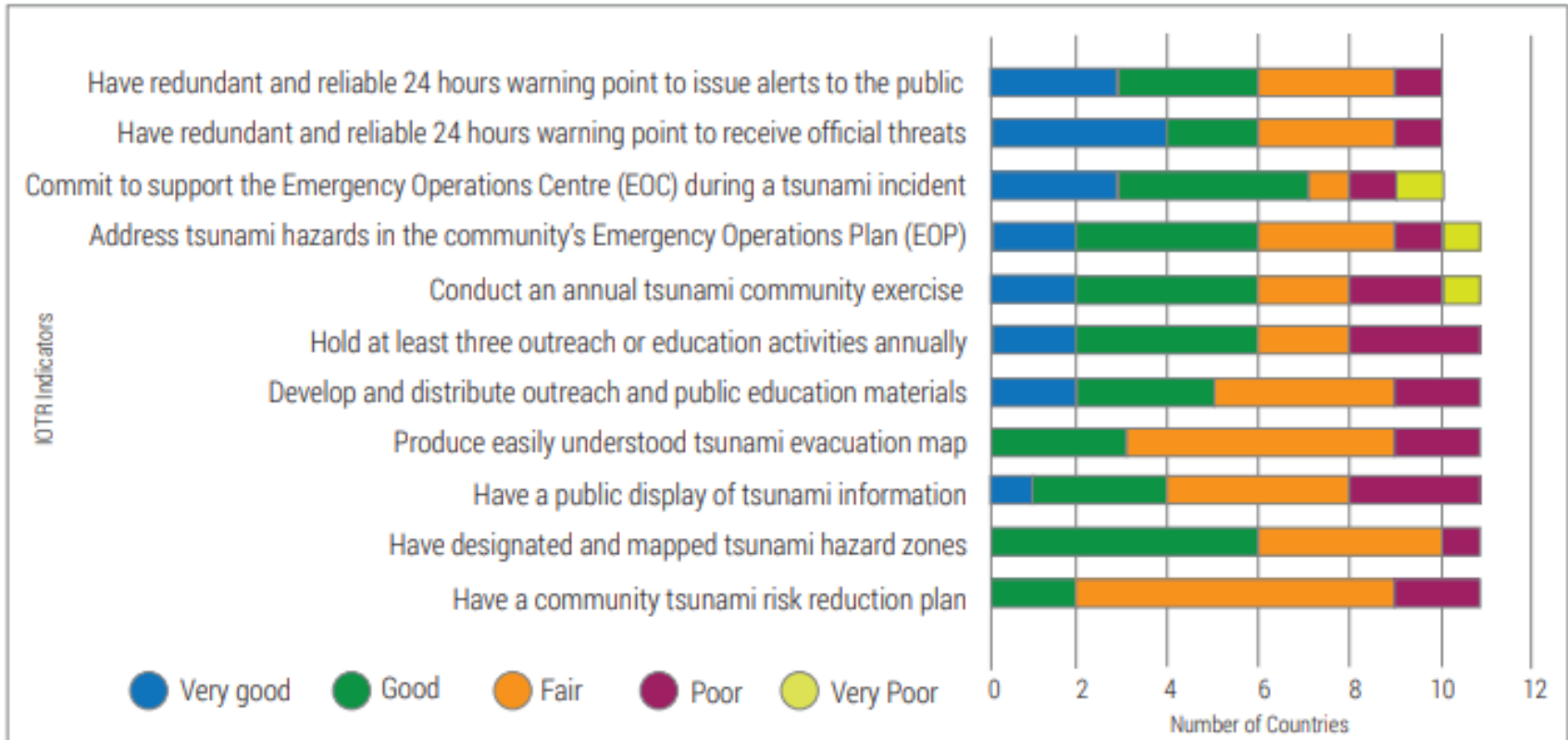


Figure 9. Status of Indian Ocean Tsunami Ready Indicators.

# Awareness, Preparedness and Response

- Enable sharing of best practices between Member States
  - Standard operating procedures
  - Evacuation infrastructure
  - Education materials
- Encourage the incorporation of tsunami awareness into the school curricula
- Develop educational materials such as teaching kits
- Support in improving standard operating procedures for tsunami warning and evacuation (WG-3)
  - At the upstream-downstream interface
  - Between agencies/organisations
  - At community level



**Thank you.**

***Nora Gale, ICG/IOTWMS Secretariat***

**Acknowledgements:**

***ICG/IOTWMS Task Team on Capacity Assessment of Tsunami Preparedness***

