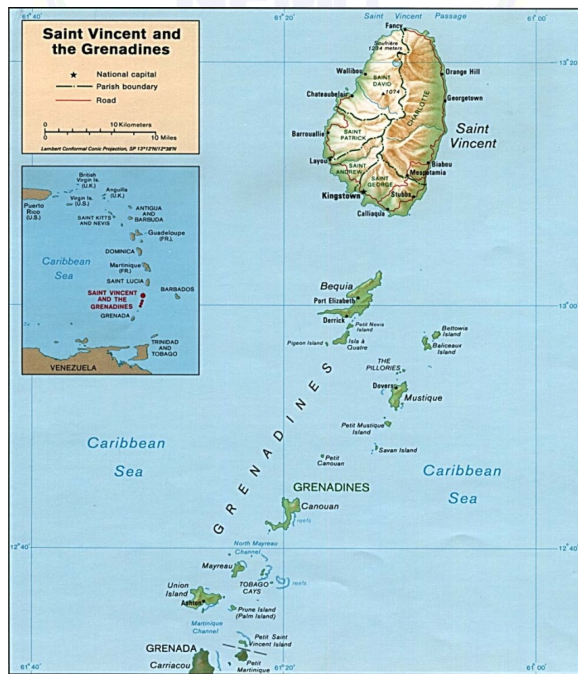




NATIONAL TSUNAMI PROGRAM FOR ST. VINCENT AND THE GRENADINES

NEMO MISSION STATEMENT



- To coordinate the use of all available resources (local, regional, and international) to ensure that all the people of St. Vincent and the Grenadines are better able to mitigate against disasters, prepare for disasters, respond to disasters and recover from the impact of disasters in the shortest possible time.

St. Vincent and the Grenadines National Tsunami Programme

- Began in 2008 following the Global Response to significantly increase awareness, information, knowledge and preparedness plans and actions for tsunami hazards and their related hazards
- Started with a focus on building knowledge and awareness in schools (i.e., training for teachers and students)
- 2014 the programme was enhance to focus on coastal communities of Clare Valley and Rose place (Kingstown).
- 2016 first National Tsunami Standard Operating Procedures (SOPs) were drafted
- 2018 had the first pilot for the Tsunami Ready Communities Programme (St. George Parish, St. Vincent and Union Island)

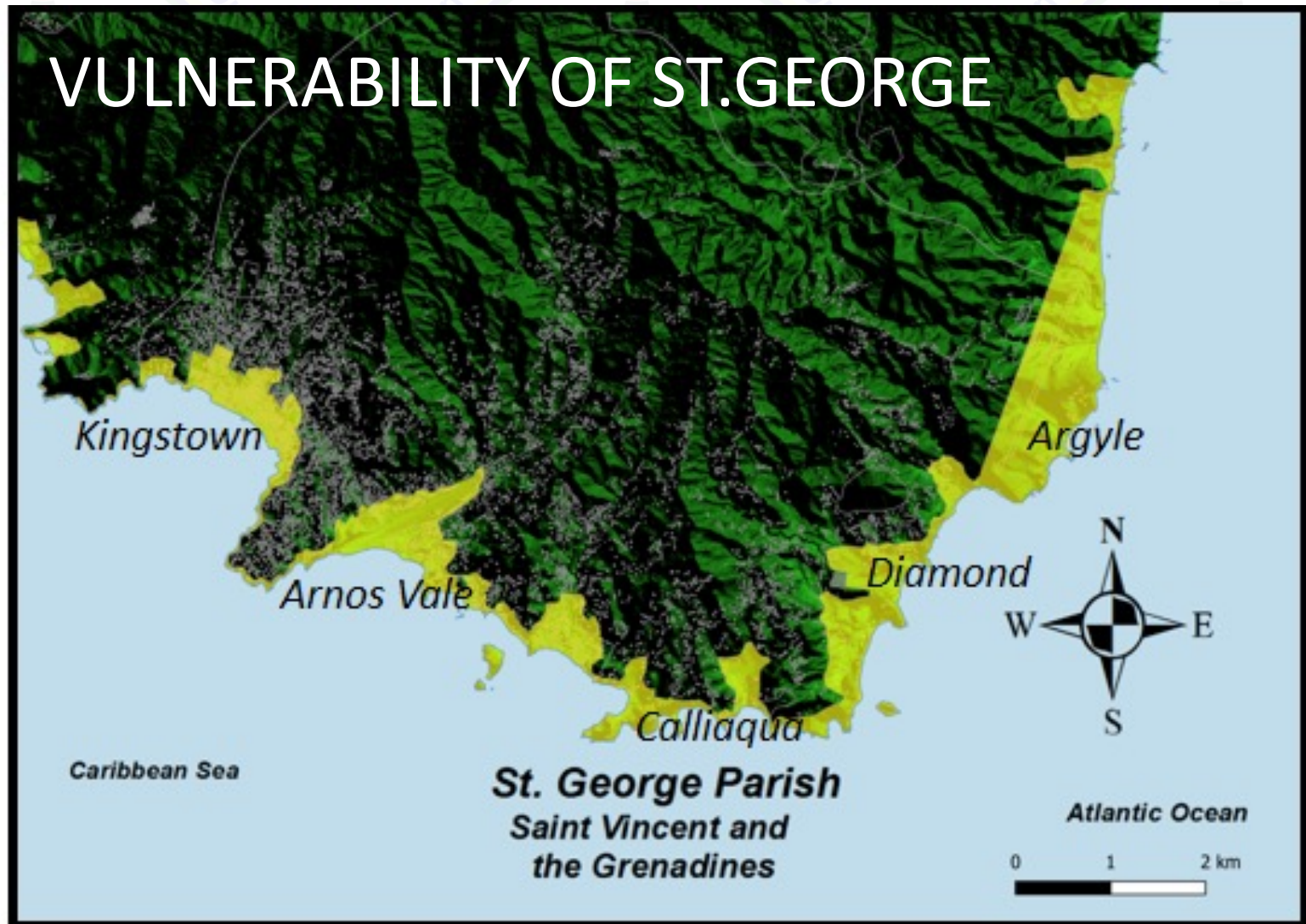
Tsunami Ready Communities Pilot Program

The UNESCO IOC CARIBE EWS Tsunami Ready Pilot Programme - supported by the Caribbean Tsunami Warning Programme of The National Oceanic and Atmospheric Administration (NOAA) with funding from USAID/OFDA.

BENEFITS OF THE TSUNAMI READY PROGRAM

- Public Education on the science, signs and impact of Tsunami in context of the national response.
- Development of Tsunami EARLY WARNING SYSTEM (EWS)
- Creation of Resource Material, Evacuation Maps and Hazard alert signage.
- Revitalization of community emergency response mechanisms for St. Vincent and The Grenadines.

VULNERABILITY OF ST. GEORGE



WHY ST. GEORGE AND UNION ISLAND

Vulnerability due to:

- Active tectonic plates (we border on the Caribbean plate)
- The presence of the “Kick ‘em Jenny” volcano underwater between SVG and Grenada.
- Increased activity of “Kick ‘em Jenny”
- Most of our settlements are developed along the coast.
- Most of the Grenadine islands are low-lying.

With the majority of our economic activity/assets concentrated in St. George parish, the importance of preparation and protection of this area cannot be slighted.

Examples of Communities to benefit for the Pilot Programme:

- Kingstown - Capital
- Arnos Vale – Major sporting facilities on island
- Indian Bay, Calliaqua, Villa, Ratho Mill – Tourism Hotspot
- Argyle – Main Airport
- Union Island (Tsunami Ready)

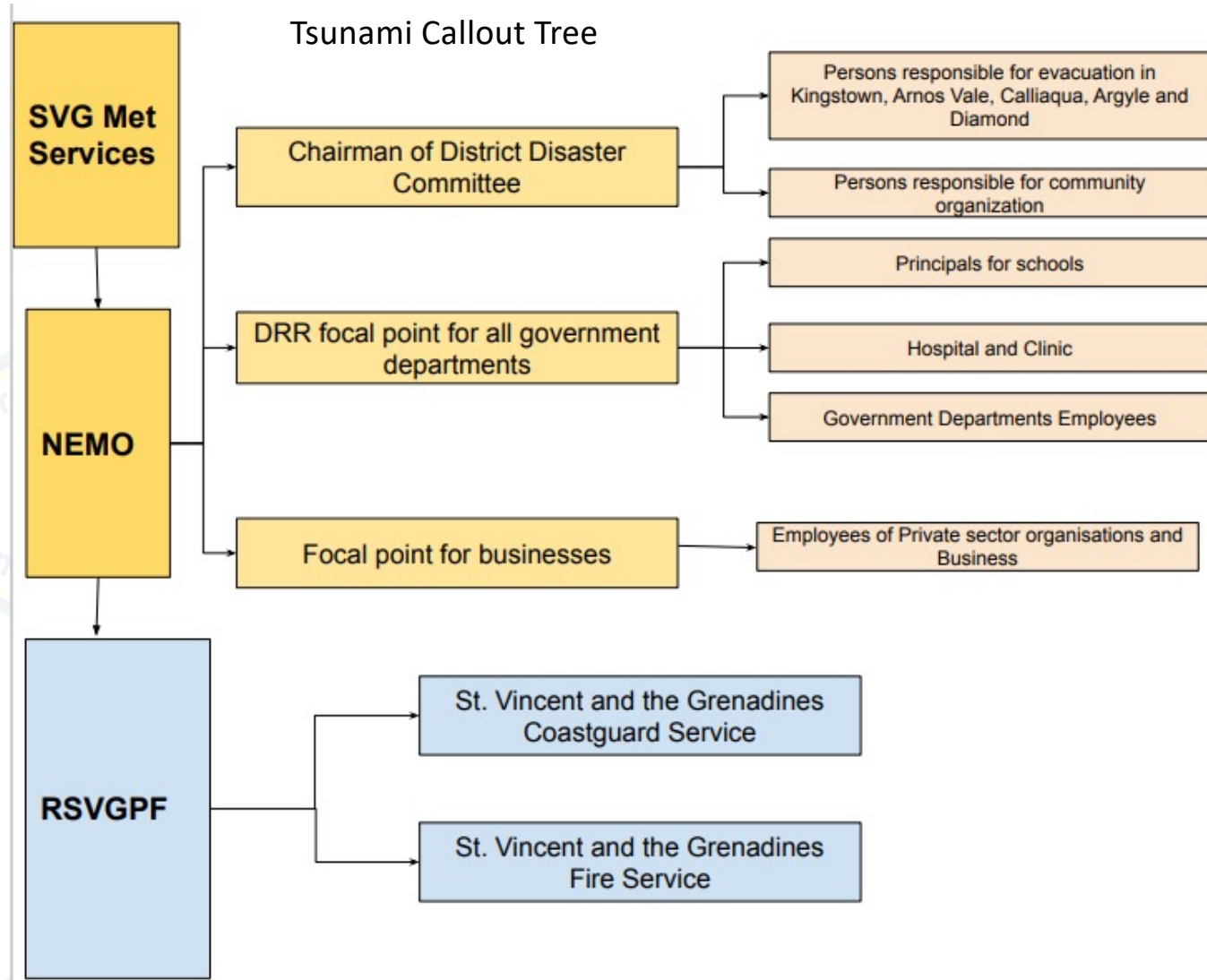
St. George Communities soon to be officially Tsunami recognised

Institutional Mechanisms for Tsunami Warnings

1. National Tsunami Warning Focal Point (TWFP) - SVG Meteorological Services
2. Tsunami National Contact – Ms. Michelle Forbes (Director of NEMO)
3. National Tsunami Warning Centre (NTWC) - NEMO
4. National Tsunami Board

**Tsunami ready activities under the National DRR Programme
Guided by the CDM framework and the CWP**

Tsunami Callout Tree

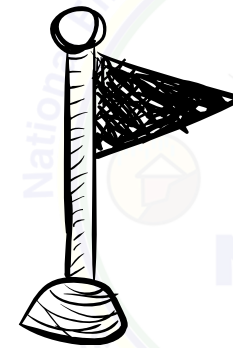




PTWC
Tsunami Threat/Info message



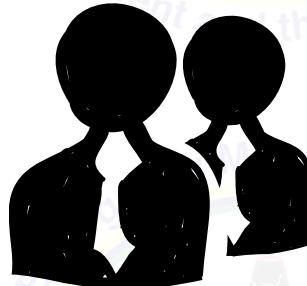
NEMO
Alert Level message



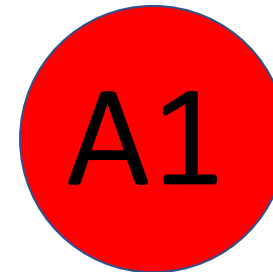
ORGANIZATION
Focal Point



Raise Alarm



Evacuation process



Assembly point



Account for all members

If a tsunami warning is issued by NEMO the following will occur:



END OF THREAT Threat has passed

NEMO ISSUES END OF THREAT MESSAGE



National EWS COMMS Media

- VHF radios
- Email
- Radio & TV
- Telephone
- CAP.CAP

ALL CLEAR ISSUED BY PRIME MINISTER



Safe to return to lower elevations

ALL CLEAR

Community EWS

- Community WhatsApp Groups
- Church bells
- Megaphones
- Town criers

Population must also be guided by natural signs.

If you

FEEL

the earth move

If you

SEE

the water recede

If you

HEAR

the rumbling of the ocean

Preventive Tsunami Evacuation Order – An evacuation order issued by national authorities based on natural tsunami warning signs and in the absence of any official product from the PTWC.

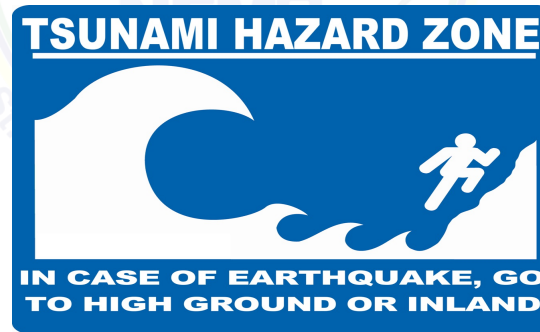
RUN!

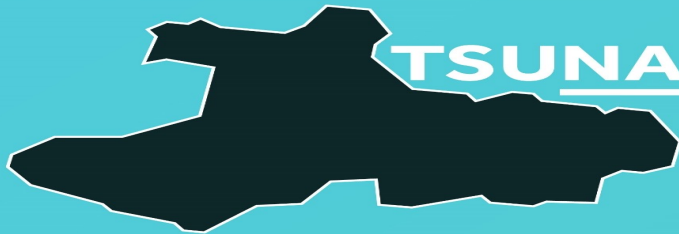


TSUNAMI MITIGATION IN SVG



Tsunami Signs





TSUNAMI READY : UNION ISLAND

Union Island is a focal point for our Tsunami Ready Programme



Tsunami map



Tsunami Evacuation Exercise



Tsunami Ready includes District Disaster Committees and Sectoral cooperation to plan AWARENESS, READINESS and RESPONSE protocol.

#TsunamiDay #OnlyTogether #TsunamiReady



Tsunami Evacuation Map
Mapa de Desalojo por Tsunami
Tsunami Evacuation Plan

Kingstown
Saint Vincent & Granadines

Legend/Leyenda/Legende

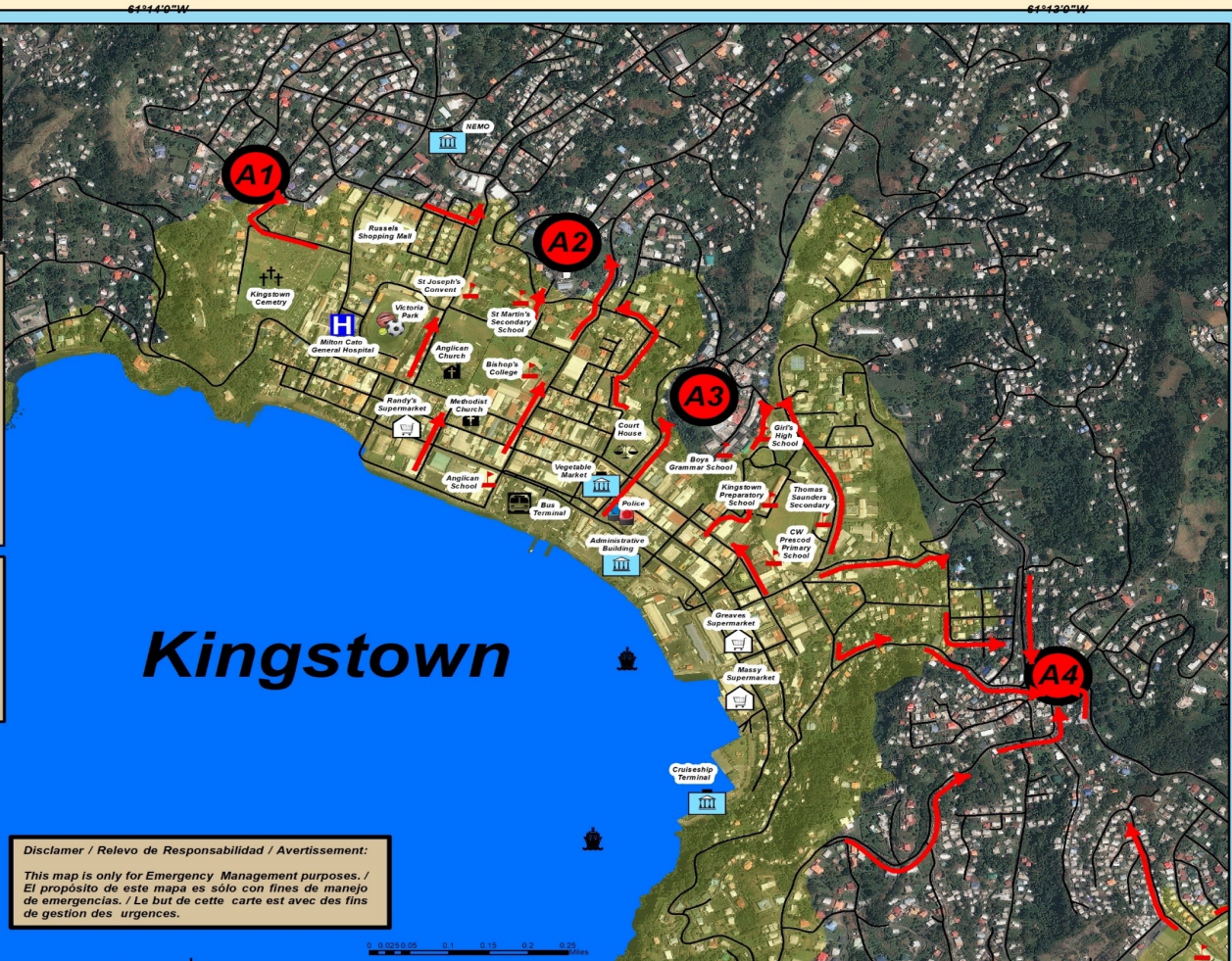
- | | | | |
|--|----------------------|--|--------------|
| | Evacuation Zone | | Supermarkets |
| | Muster Points | | Church |
| | Roads | | Cemetery |
| | Evacuation Arrows | | Bus Terminal |
| | Ports | | Police |
| | Court House | | Schools |
| | Government Buildings | | Hospital |
| | Parks | | |

- Locations/Localizaciones/Emplacement**
Assembly Points/Lugares de Asamblea/Lieux de l'Assemblée
- A1- Faith Temple
 - A2- Grenadine House
 - A3- Intermediate High School
 - A4- Sion Hill Anglican Church

Note: If there is no Assembly Point close by, just move to the nearest high ground.
Nota: Si no hay un Punto de Asamblea cerca, muevase al punto alto más cercano.
Remarque: Si il n'y a pas à proximité de l'Assemblée Point, passer au point haut proche.



Location Map / Mapa de Localización / Carte de Localisation



Kingstown

Disclaimer / Relevo de Responsabilidad / Avertissement:
 This map is only for Emergency Management purposes. /
 El propósito de este mapa es sólo con fines de manejo
 de emergencias. / Le but de cette carte est avec des fins
 de gestion des urgences.



October 10th, 2019

USAID FROM THE AMERICAN PEOPLE	CTIC Caribbean Tsunami Information Centre ctic@cc-unesco.org	NORR NATIONAL OCEANIC AND ATMOSPHERIC ADMINISTRATION U.S. DEPARTMENT OF COMMERCE	GLOBAL MATRIX Sustaining and Enhancing Resilience of Communities	

National Emergency Management Organization
Organización Nacional para el Manejo de Emergencias
 Tel: 1 (784) 456-2975 Fax: 1 (784) 457-1691
 web: www.nemo.gov.vc



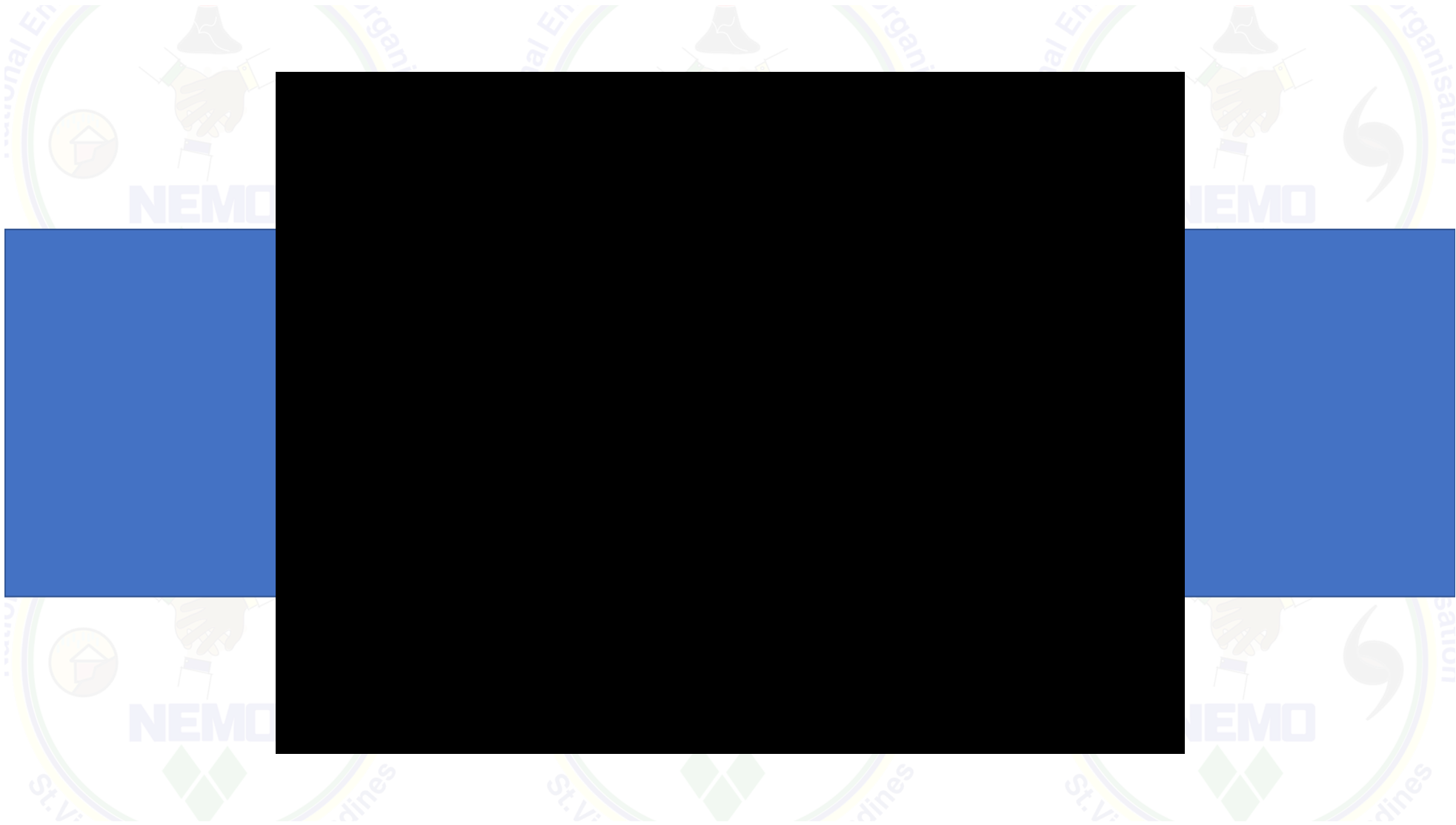
Union Island exercise



Bequia Caribe Wave 2023 Exercise



Bequia Caribe Wave 2023 Exercise



Challenges to the Programme

- Finances – Expensive (approximately EC \$100 000)
- Data
 - Increase situational Awareness
 - Support the public education
 - Support response and preparedness
- Political will – leaders of society, greater representation at the cabinet level.
- Community Buy-in
- Risk Perception
 - Probability of occurrence perceived as low
 - Public Education Low



THANK YOU FOR YOUR ATTENTIVENESS



ANY QUESTIONS?