



UNESCO/IOC – NOAA ITIC Training Program in Hawaii (ITP-Hawaii)  
TSUNAMI EARLY WARNING SYSTEMS  
AND THE PACIFIC TSUNAMI WARNING CENTER (PTWC) ENHANCED PRODUCTS  
TSUNAMI EVACUATION PLANNING AND UNESCO IOC TSUNAMI READY PROGRAMME  
7-18 August 2023, Honolulu, Hawaii USA

# 14.6 Create Community Evacuation Maps

## QGIS Instructions

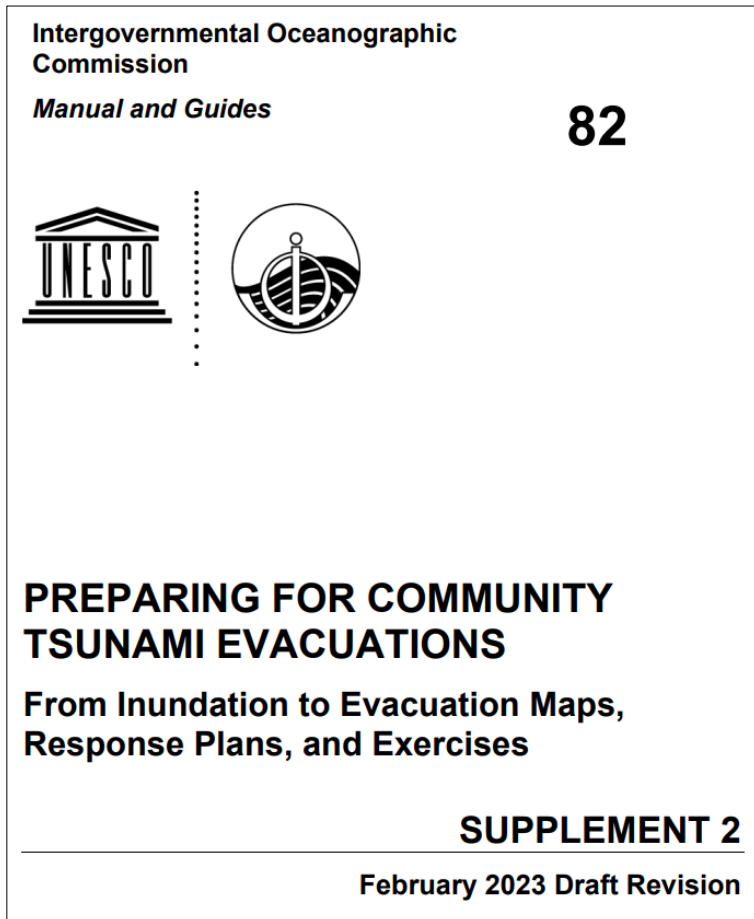
---

Carolina Hincapie-Cardenas      Desireé Bayouth-García

UNESCO/IOC – NOAA International Tsunami Information Center



# Following MG-82 Suppl 2 (Feb. 2023 draft rev.)



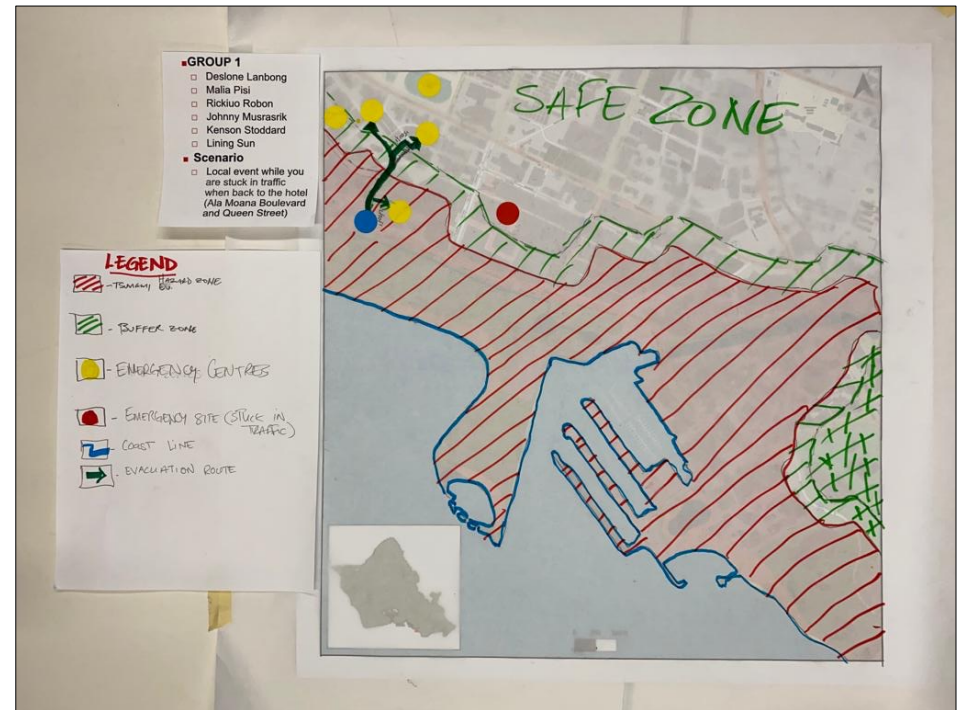
**Section I: Introduction and use of QGIS (~25 min)**

**Section II: Finalizing inundation layers using QGIS (~15 min)**

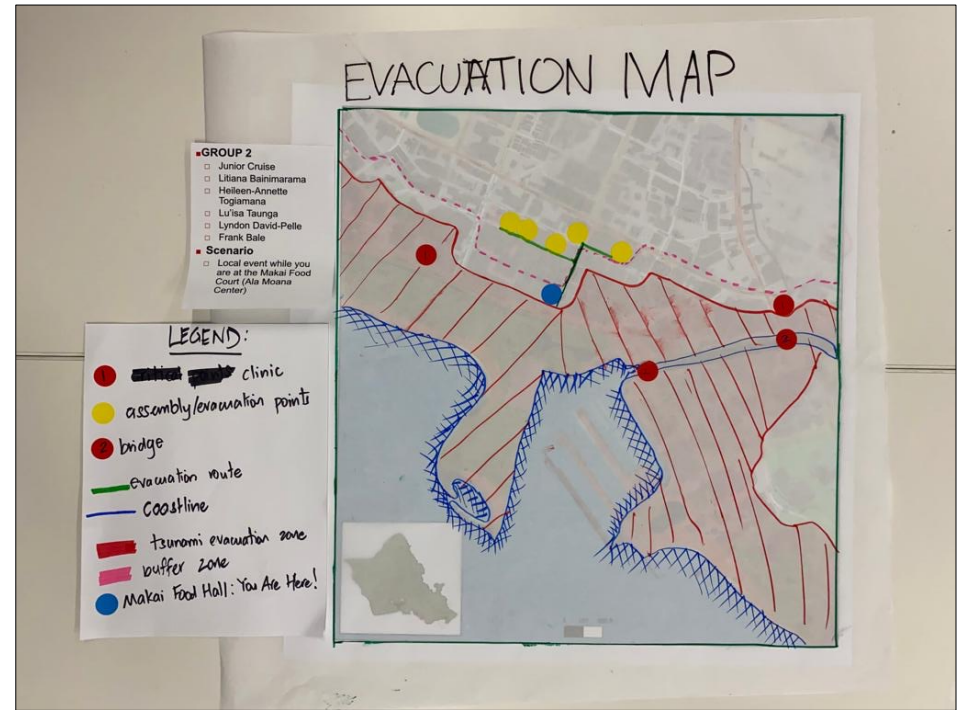
**Section III: Developing tsunami evacuation maps using QGIS (~ 30 min)**

**Section IV: Finalizing tsunami evacuation maps for printing (~20 min)**

# From 'paper and pencil' to QGIS

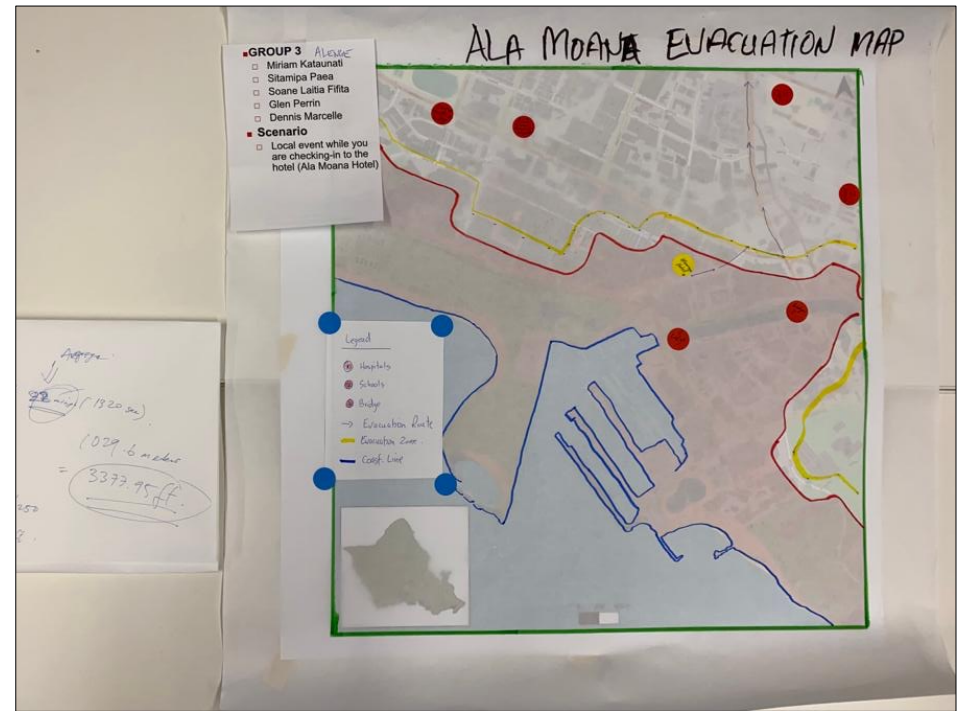
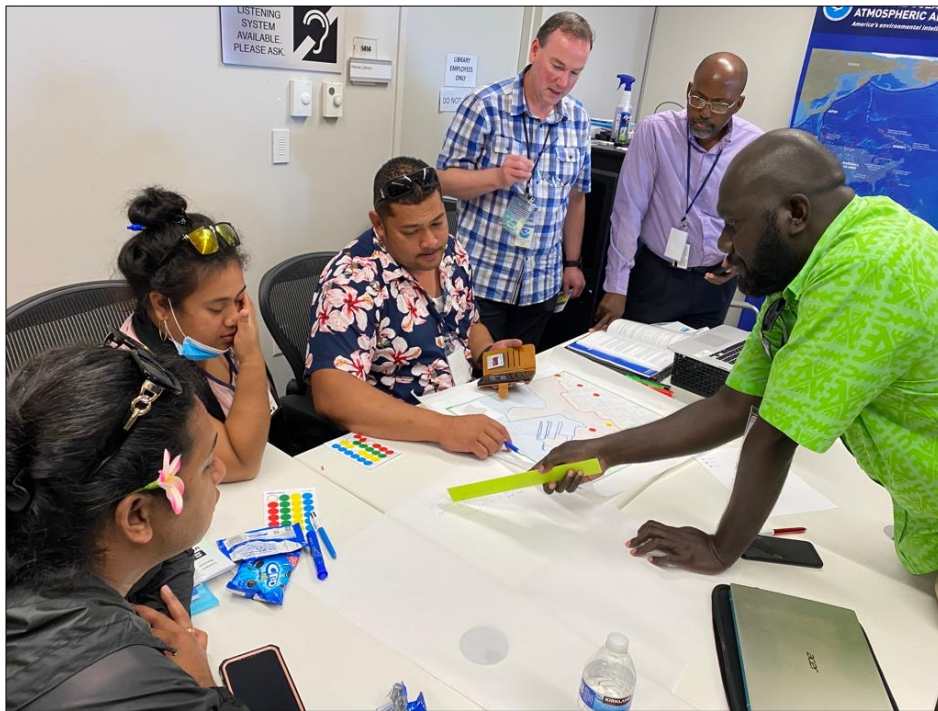


# From 'paper and pencil' to QGIS

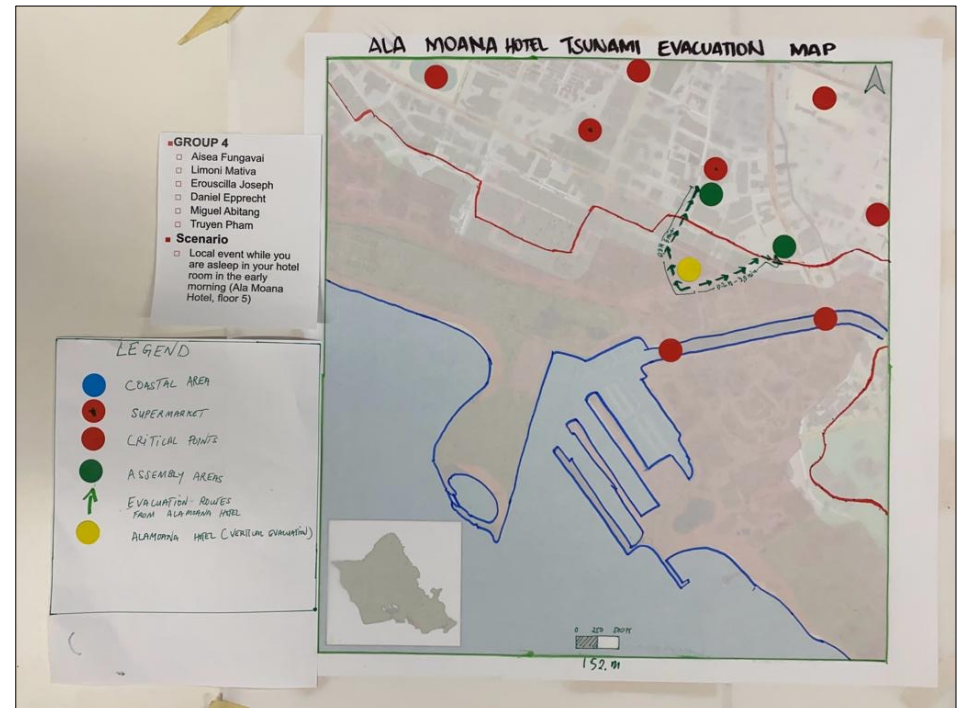
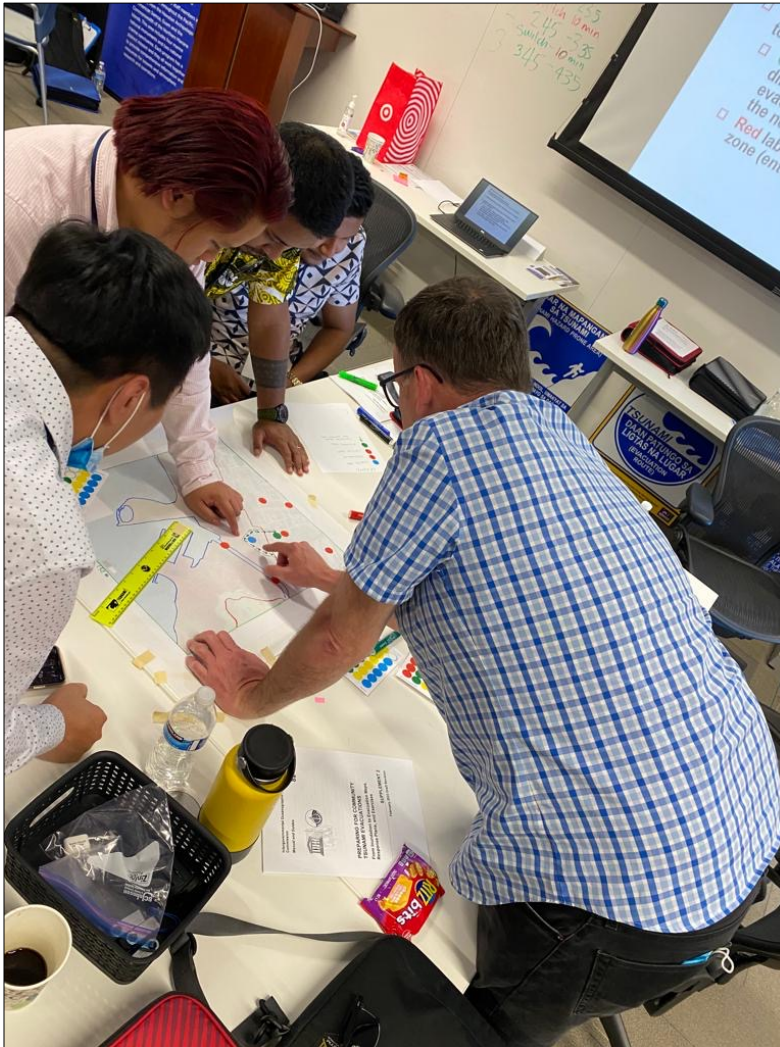




# From 'paper and pencil' to QGIS

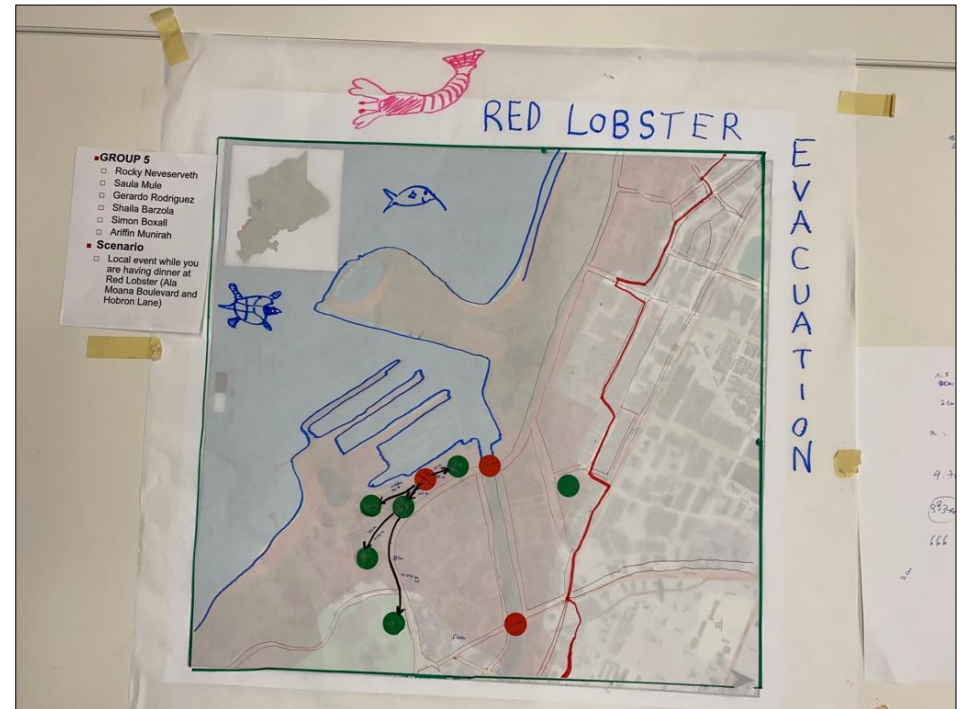


# From 'paper and pencil' to QGIS





# From 'paper and pencil' to QGIS

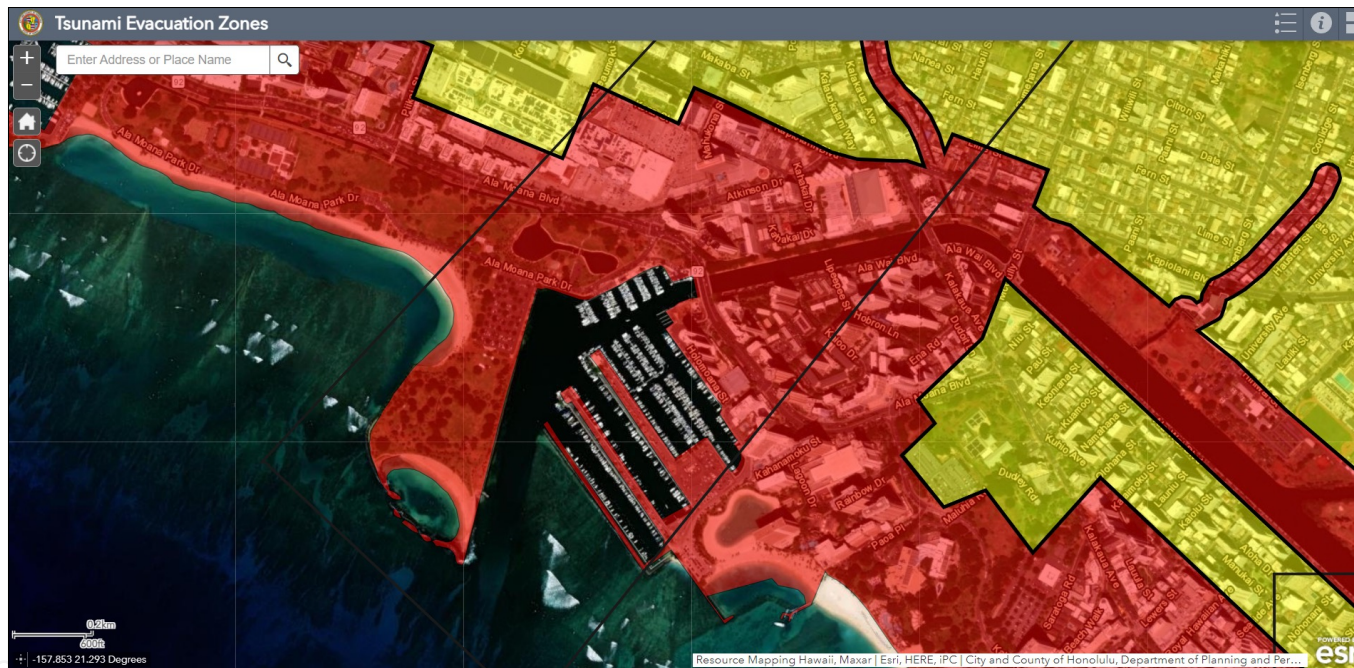


# From 'paper and pencil' to QGIS





# From 'paper and pencil' to QGIS





UNESCO/IOC – NOAA ITIC Training Program in Hawaii (ITP-Hawaii)  
TSUNAMI EARLY WARNING SYSTEMS  
AND THE PACIFIC TSUNAMI WARNING CENTER (PTWC) ENHANCED PRODUCTS  
TSUNAMI EVACUATION PLANNING AND UNESCO IOC TSUNAMI READY PROGRAMME  
7-18 August 2023, Honolulu, Hawaii USA

# Thank you

---

Carolina Hincapie-Cardenas      Desireé Bayouth-García

UNESCO/IOC – NOAA International Tsunami Information Center

