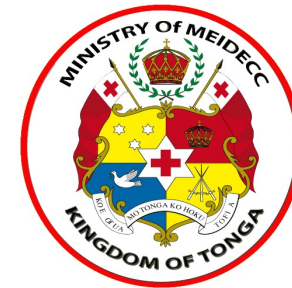


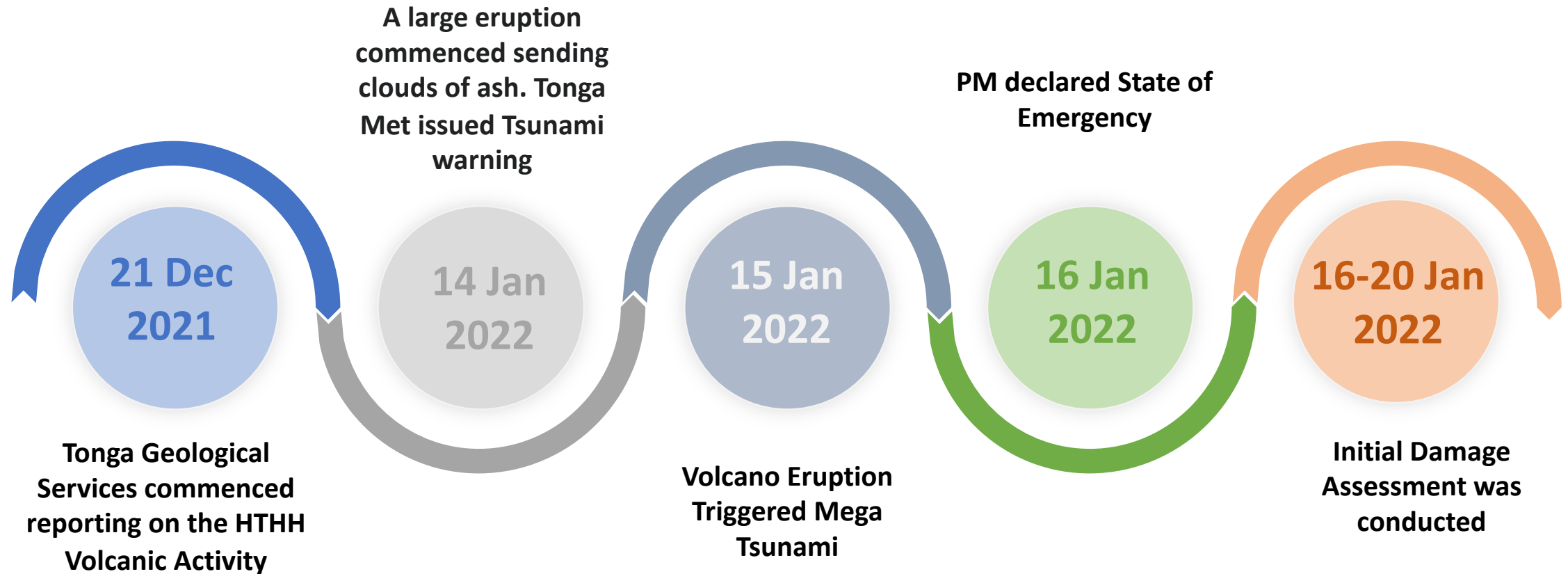
Hunga-Tonga-Hunga-Ha'apai Undersea Volcanic Eruption & Tsunami Disaster

Impact & Response to the Catastrophe

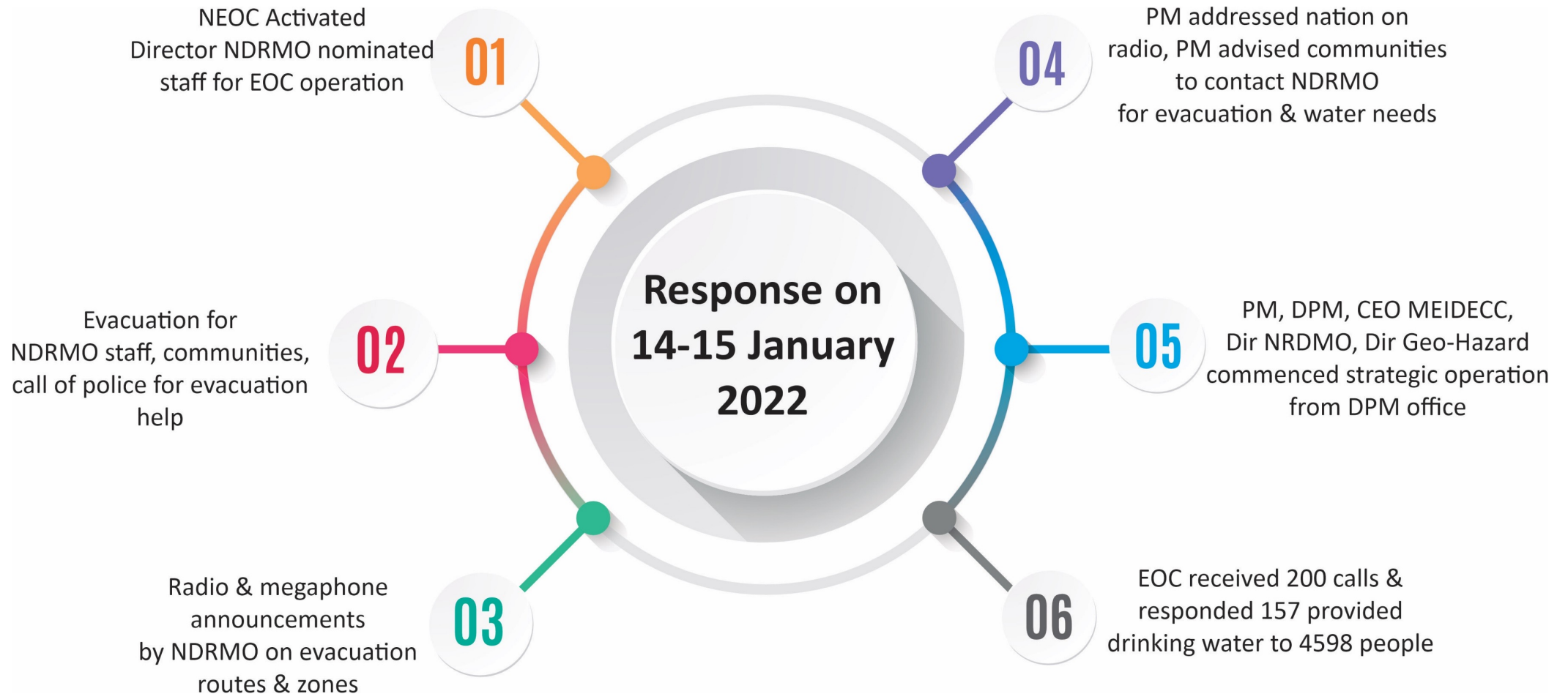


National Disaster Risk Management Office (NDRMO),
The Ministry of MEIDEC, Kingdom of Tonga

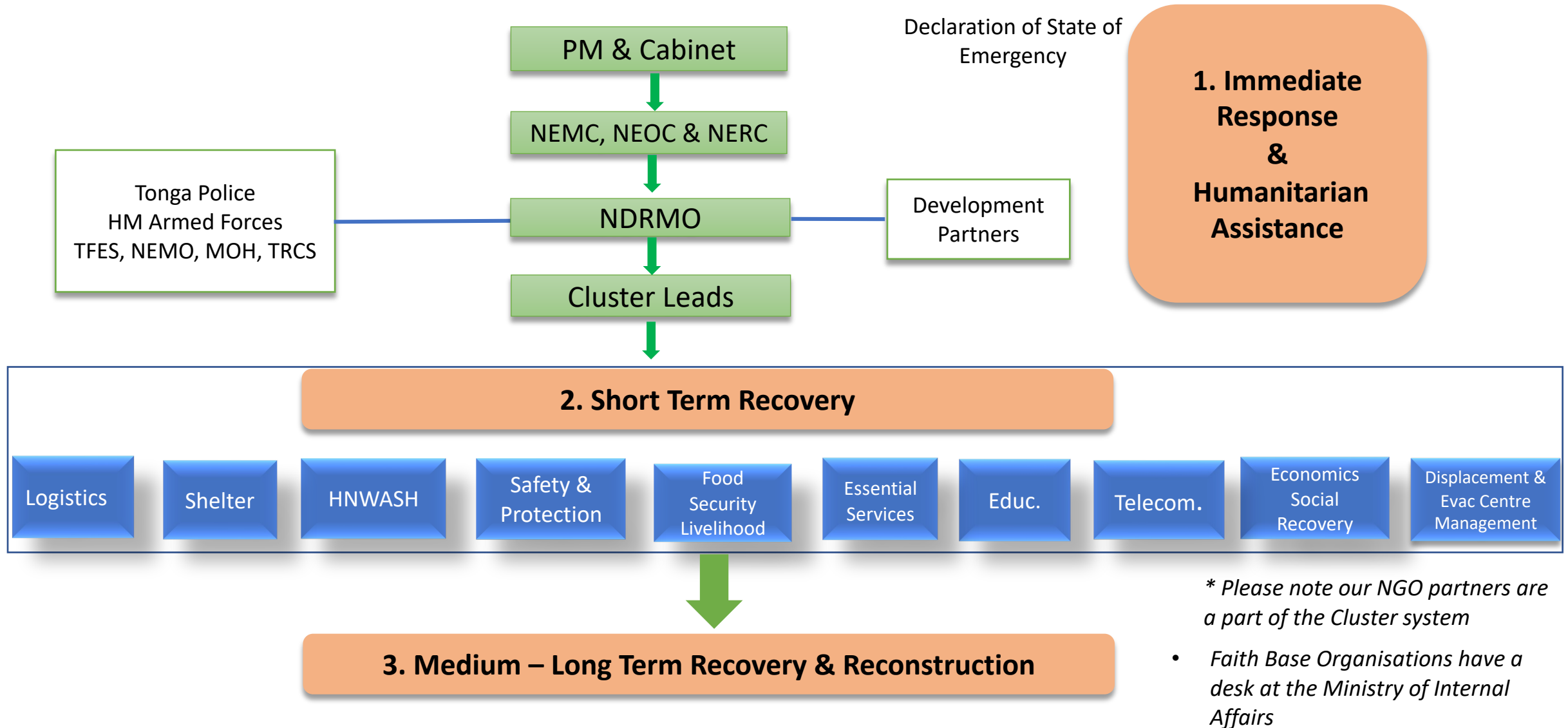
Volcanic Eruption & Tsunami – The Event



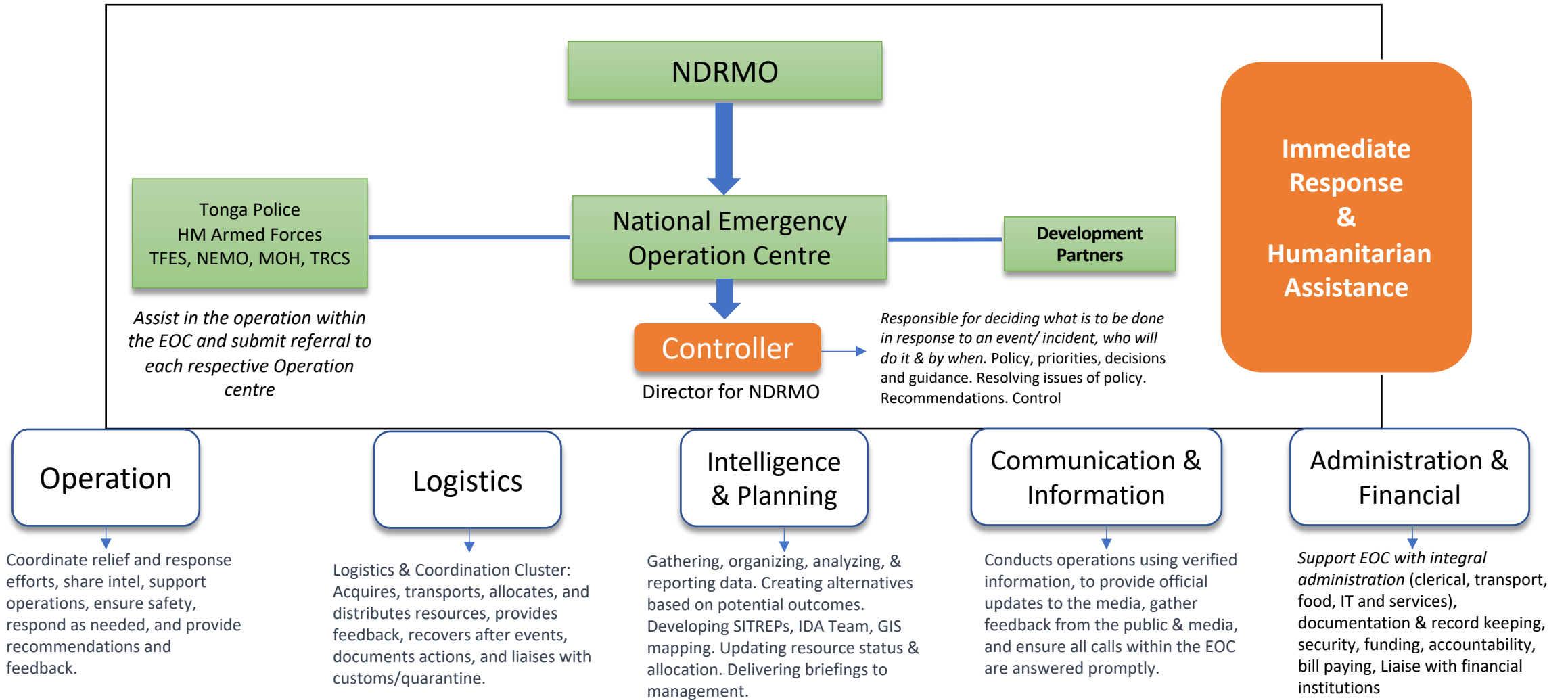
Response in the Aftermath of Eruption & Tsunami



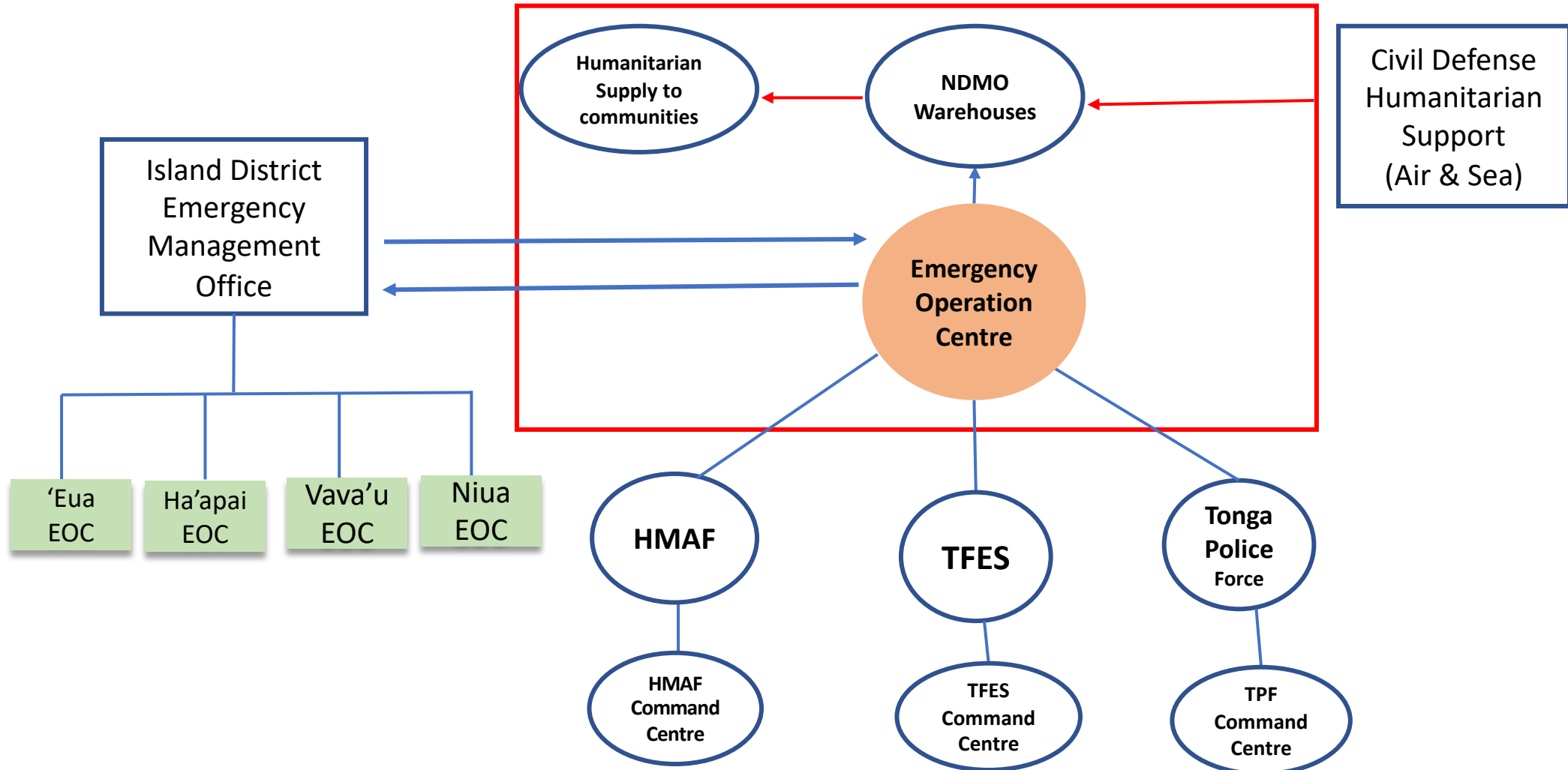
Emergency Management Structure for HTHH Operation



EOC Structure

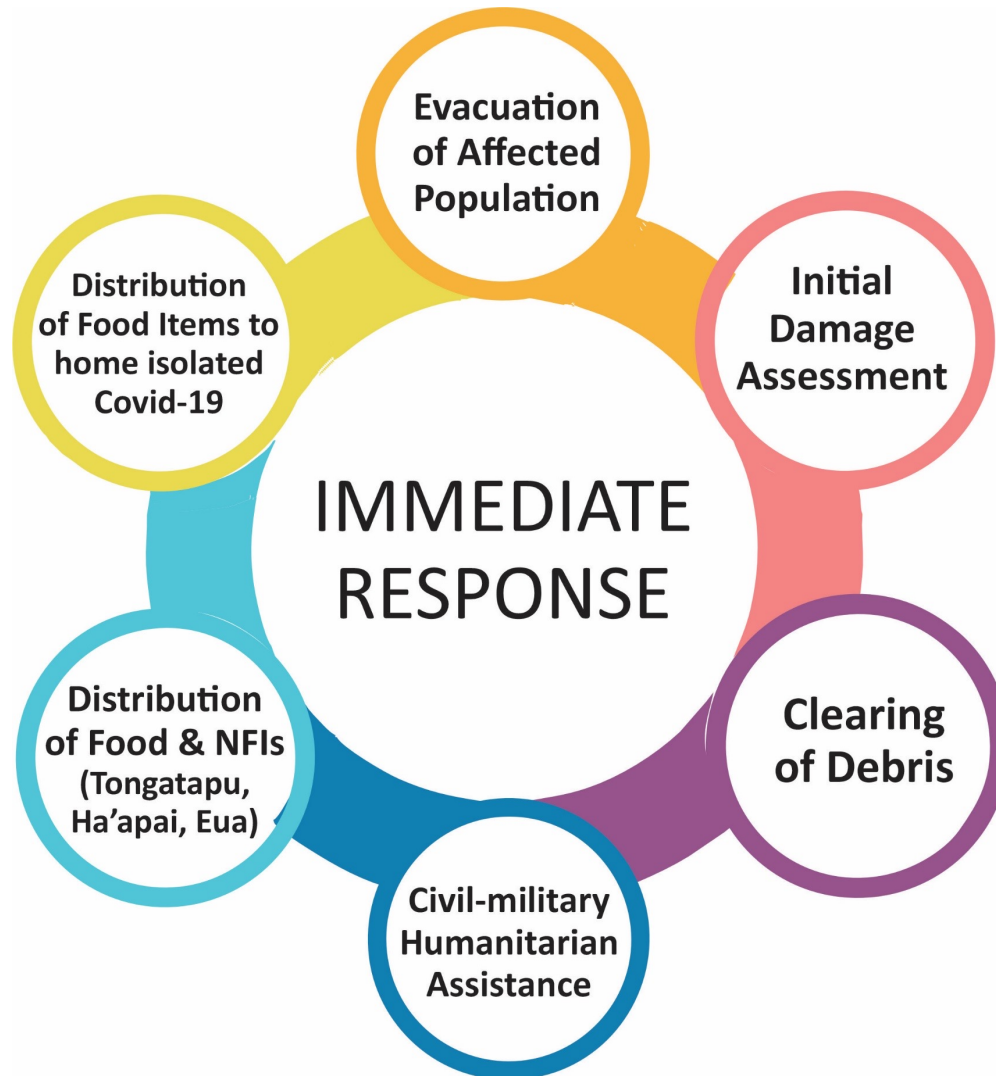


National EOC Link to District EOC & First Responders



NEOC Activated on the 14th January, 2022 – Stand down of Operation the 14th April, 2022

Immediate Response



First Responders & Humanitarian Actors participated in response:

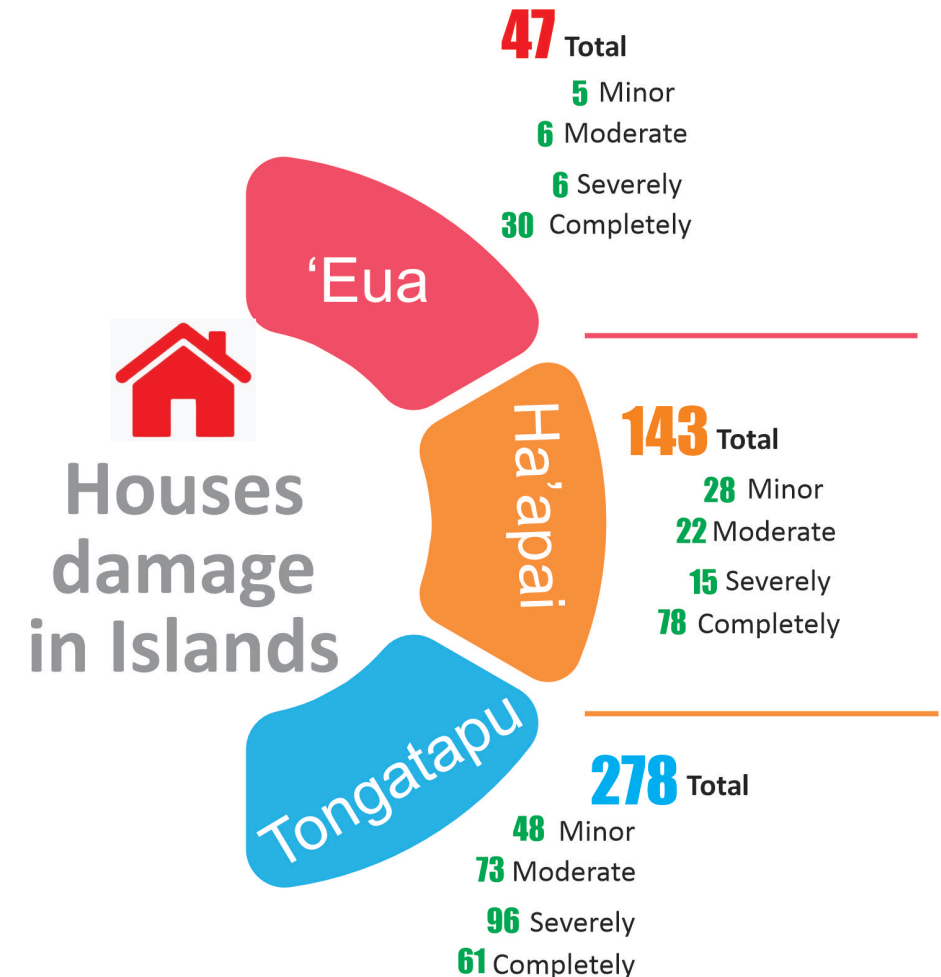
- National Disaster Risk Management Office (NDRMO)
- His Majesty's Armed Force (HMAF)
- Tonga Police Force
- Tonga Fire & Emergency Services (TFES)
- Mainstreaming of Rural Development Innovation (MORDI Tonga Trust)
- Caritas Tonga
- Tonga Red Cross Society (TRCS)
- Ministry of Internal Affairs (MIA)
- Ministry of Infrastructure (MOI)
- Ministry of Health (MOH)
- Tonga National Youth Congress (TNYC)
- Tonga Family Health Association (TFHA)

Initial Damage Assessment HTHH

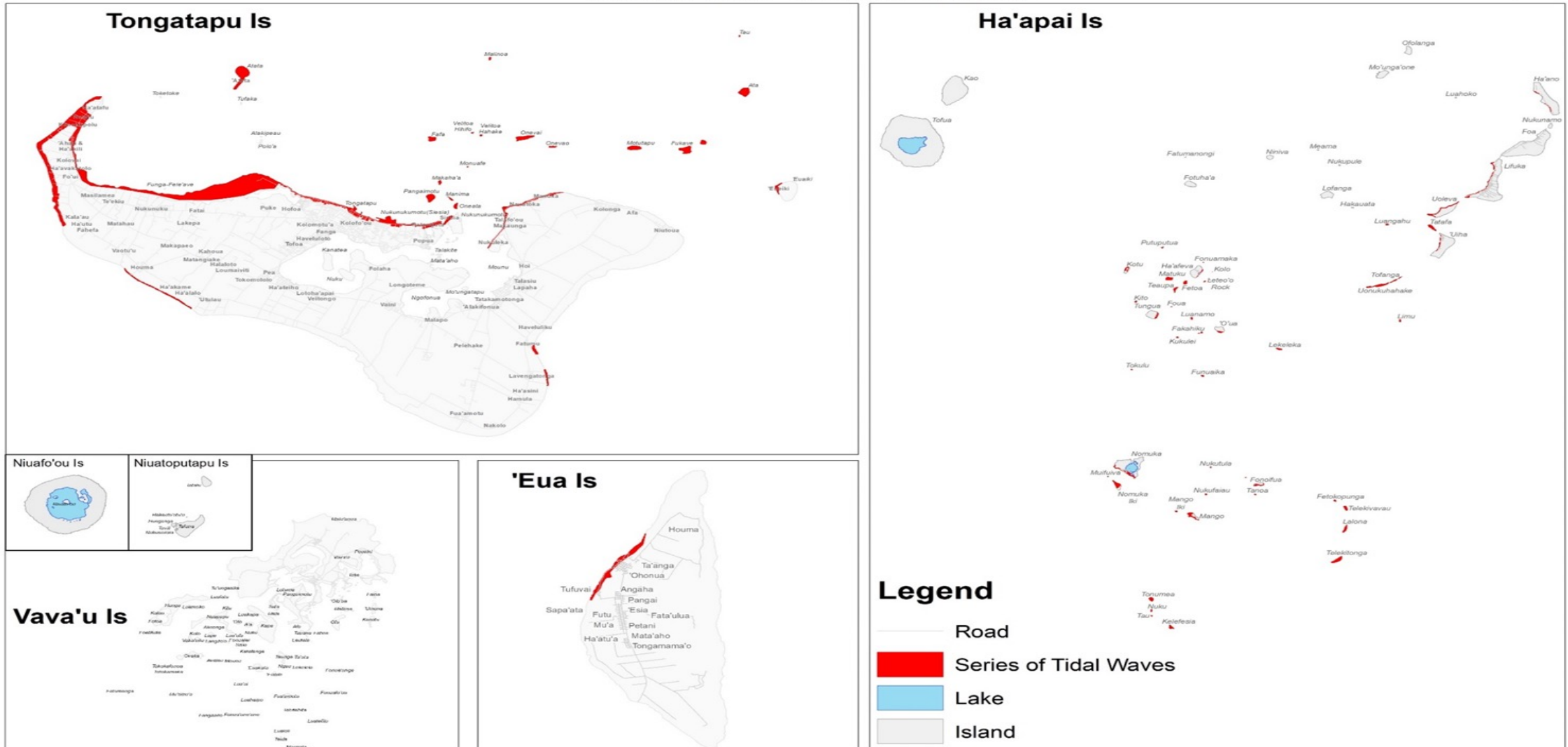
IDA conducted (January 16-20) to assess damage and population needs. NDRMO designed the IDA form with Cluster Leads; the IDA report & analysis provides a snapshot based on the feedback from the affected people.

Island	Minor Damage	Moderate Damage	Severely Damage	Completely Destroyed	Total
'Eua	5	6	6	30	47
Ha'apai	28	22	15	78	143
Tongatapu	48	73	96	61	278
Grand Total	81	101	117	169	468

- A total of 286 homes will be reconstructed (117 Severely damage & 169 completely destroyed)



IDA Results – Affected Areas



Source : MLNR- LGIS - NRD

Disclaimer : For National Emergency Management Office Use ONLY

Date: 14/02/2022

Devastating impacts in Ha'apai



- Nomuka, Mango, Fono'i, Tungua and Ha'afeva were among the islands that were struck by the tsunami
- Mango was completely obliterated; residents sought shelter at the top of the hill until assistance arrived

Damages in 'Eua



- Damages caused by the HTHH undersea volcanic eruption was centered around Nafanua harbour, settlement and local businesses around 'Ohonua that was located close to the shorelines.
- Local cemeteries were completely inundated & destroyed
- Local gas stations was also destroyed.

Devastating impacts in Tongatapu



84% of Tonga's population impacted by ash & tsunami waves. Tongatapu recorded the highest estimated damage, Schools, government buildings, cash crops were heavily damaged.

Civil-Military Humanitarian Assistance



- Once the the airstrip was cleared of the debris, civil-military humanitarian aid (flights & defense vessels) started to arrive.
- All cargoes must be on 72 hours quarantine



Number of Flights	Number of Vessels
42	24



Humanitarian Relief from Tongan Diaspora

- NDRMO received more than 400 containers of relief items from the Tongan diaspora particularly, New Zealand, Australia, United States & Japan.
- Consigned to NDRMO to distribute while others where care off to NGO's, Faith Base organisations & communities to be distributed



Distribution of Food & Non-Food Items

16th – 18th 2022: 220 Litres water, 150 kitchen kits, 150 hygiene kits and 222 tarpaulins for Nomuka, Fonoi and Mango were transported via HMAF Late. The NFIs were in NDRMO's prepositioned stocks for times of disasters



NEMO & HMAF offloading humanitarian relief supply for Nomuka



Offloading from the Late humanitarian relief supply & food items for **Tungua**



Relief distribution in **Matuku**



Food items transported to 'O'ua



Water distribution in Kotu



Offloading humanitarian relief supply to a Fonoi fishing boat



Food & NFI arrived at Ha'afeva

Relief Transportation & Distribution in Ha'apai



- His Majesty's Armed Force's patrol boat, docked in the deep and offload humanitarian cargo onto inflatable barges and small fishing boats to be transported to the islands



- NDRMO, Town Officers & Village Emergency Management Committees distributed the items to the affected households in the community

Relief Operation in 'Eua



- Humanitarian Relief was again offloaded from the defence patrol vessel onto the inflatable barges and then delivered onto the wharf
- Any cargo transported to 'Eua has to be quarantined for 72 hours before it is allowed to be distributed

Relief operation/distribution in Tongatapu



**NEMO & HMAF @
Nukunukumotu**



Kolonga



Navutoka



'Atata



**NEMO & HMAF @
Patangata**



Manuka



Fijian Community



'Eueiki

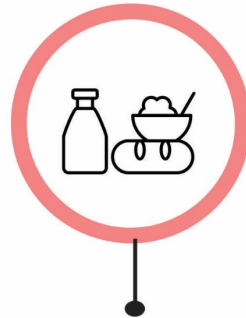
'Ahau, Kanaokupolu & Ha'atafu



Covid-19 Home Isolation Food & NFIs Distribution



EOC received
1338 calls
from households
in home quarantine
for assistance



NDRMO & TFES
distributed
3530 food package
from donated food
items



10,590
water packs
were distributed to
households in
home quarantine



200
Covid-19
hygiene kits
donated by Caritas
Tonga were
distributed



NDRMO distributed
food items &
care packages to
first responding
agencies worked
during emergencies



Relocation Area for Displaced Communities

1. Kanokupulu



2. Atata



Relocation Site for 'Atata - Masilamea



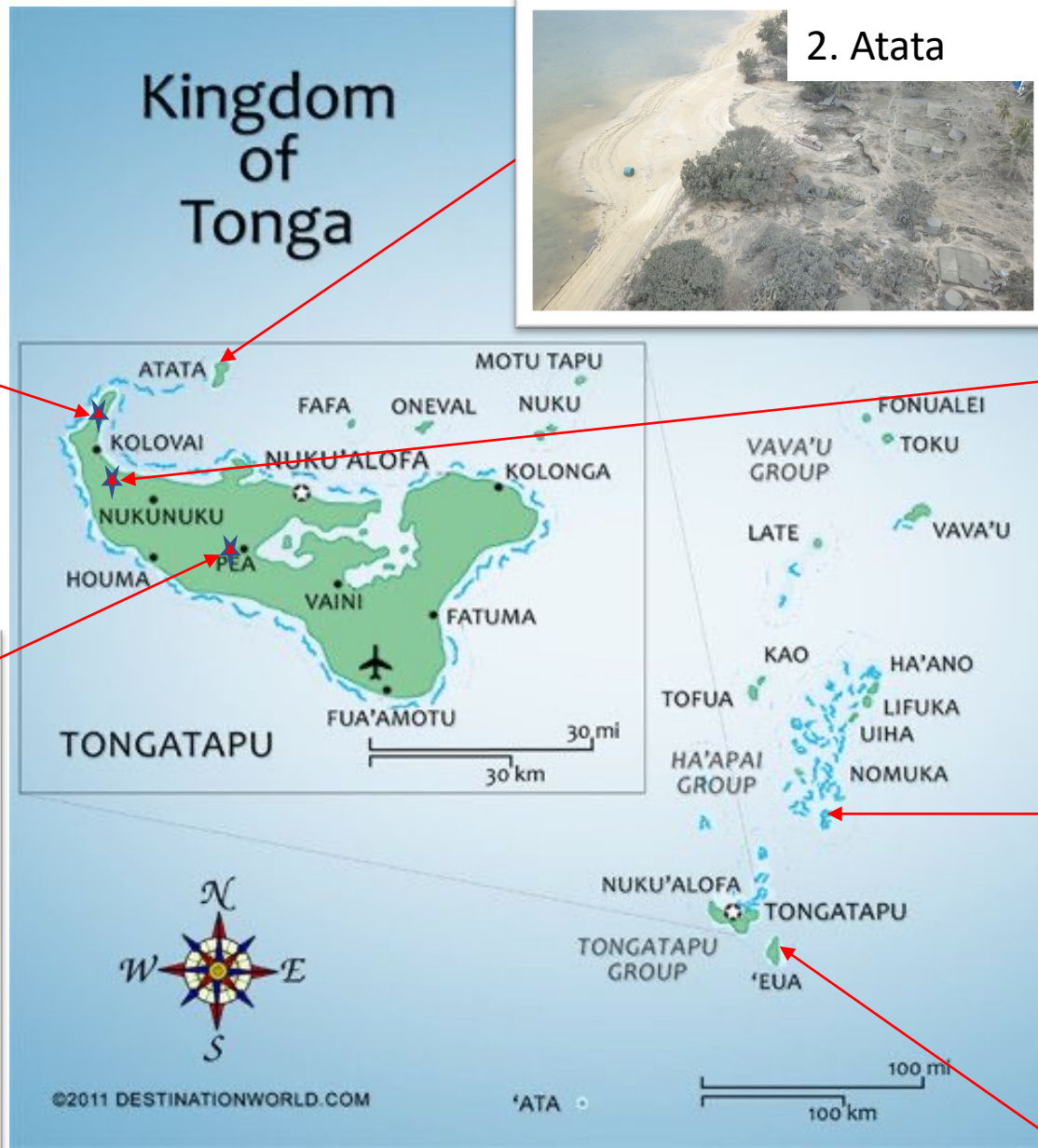
Relocation Site for Kanokupolu- Matatua



3. Mango



Relocation Site for Mango – Ta'anga 'Eua



Recovery & Reconstruction

Construction of affected homes

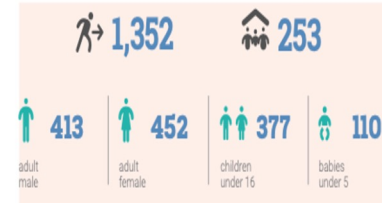
- Construction of 207 of affected homes are currently underway at affected areas.
- 22 homes have been constructed at Atata relocation area
- Mango residents have been relocated to 'Eua
- Construction at Nomuka, Fonoï and Tungua is still ongoing
- Work regarding the relocation of Kanokupolu is ongoing. This relocation is handled by the Palace Office and the Ministry of Infrastructure



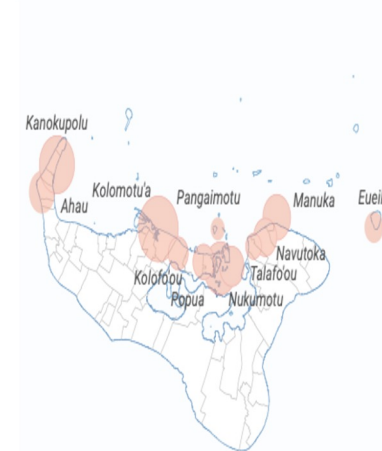
The HHHT Volcanic Eruption and the induced tsunami waves which hit Tonga in the evening of 15 January 2022 resulted in the displacement of about 2,390 people and 465 households based on data collected to date. About 54.41% of affected households are found in Tongatapu, 30.54% in Ha'apai Islands, and 15.05% in 'Eua. Additional data collection on displacement numbers, needs and locations is ongoing by NEMO (with support from IOM). Further details and updates will be published soon.

TONGATAPU

Displaced population breakdown

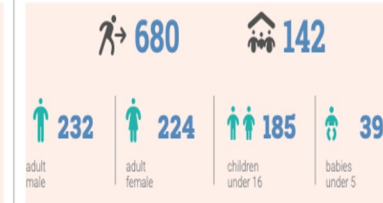


Internally displaced people by village

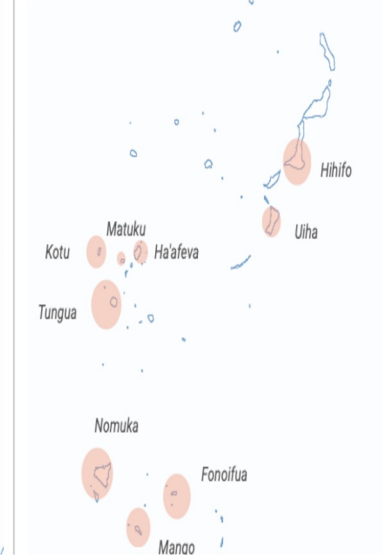


HA'APAI

Displaced population breakdown

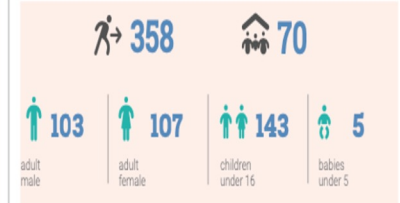


Internally displaced people by village

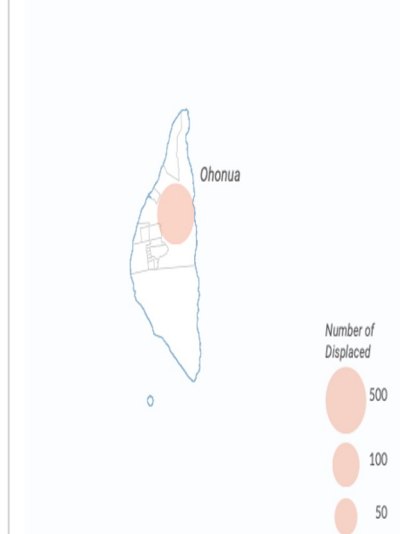


'EUA

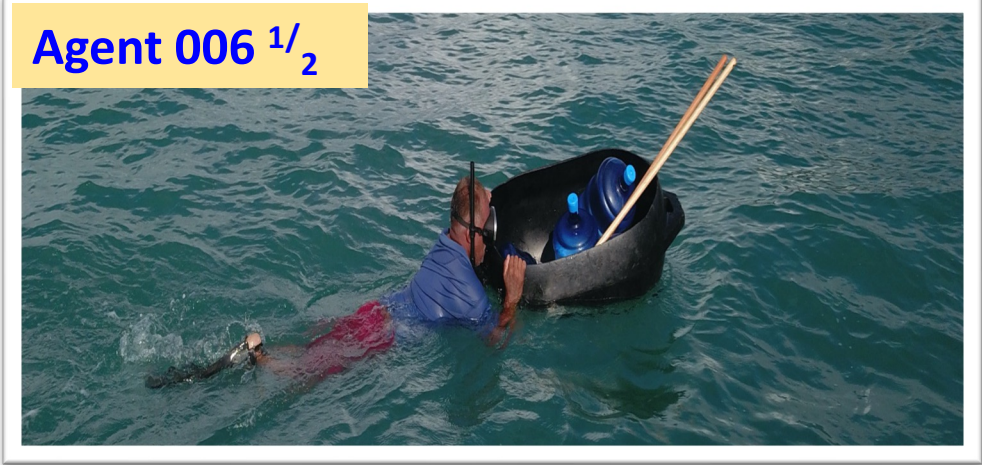
Displaced population breakdown



Internally displaced people by village



Mission Impossible 4!



MORDI & NEMO Humanitarian Assistance for 'Eueiki



Malo 'Aupito