

## Agenda Item 7

# PROCARIBE+ Overview

# TIMELINE: From CLME+ to PROCARIBE+

## CLME+

- June 2019 **idea for CLME+ successor project** introduced at Cartagena Convention IGM18/COP15, Honduras
- Feb 2021 Final Regular CLME+ PSC Meeting + text of OCM MOU technically cleared + (partial) independent Terminal Evaluation
- Oct 2021 Final & Specials CLME+ PSC Meeting : OCM MOU text cleared and to be opened for signature following language reconciliation  
→ **PROCARIBE+ Project Technical Closure**
- Sep 2023 OCM MOU language reconciliation completed
- Oct 2023 Opening for signature of the OCM MOU, Aruba (IGM20/COP17 High-Level Segment)

## PROCARIBE+

**19 countries** submitted a GEF OFP endorsement letter for the PROCARIBE+ PIF

**March 2021** PROCARIBE+ PIF submission to GEFSEC

June 2021 PIF approved by GEF, PPG grant released

**PROCARIBE+ ProDoc development**

July 2022 PROCARIBE+ ProDoc to UNDP for clearance

Aug 2022 PROCARIBE+ to GEFSEC for CEO endorsement

Dec 2022 PROCARIBE+ CEO endorsed

**May 2023** **PROCARIBE+ (administrative) START**

June 2023 PROCARIBE+ Project Manager on board

# UNDP/GEF PROCARIBE+ Project

**Protecting and Restoring the Ocean's natural Capital, building Resilience and supporting region-wide Investments for sustainable Blue socio-Economic development**

May 2023 - May 2028

GEF grant: USD 15,4 M

*successor to the **CLME** (2009-2014) and **CLME+** (2015-2021) Projects,  
and supporting the implementation of the  
10-year regional **Strategic Action Programme on the Marine Environment (CLME+ SAP; 2015-25\*)***



**CLME+ Strategic Action Programme (2015-2024)**  
Caribbean & North Brazil Shelf Large Marine Ecosystems

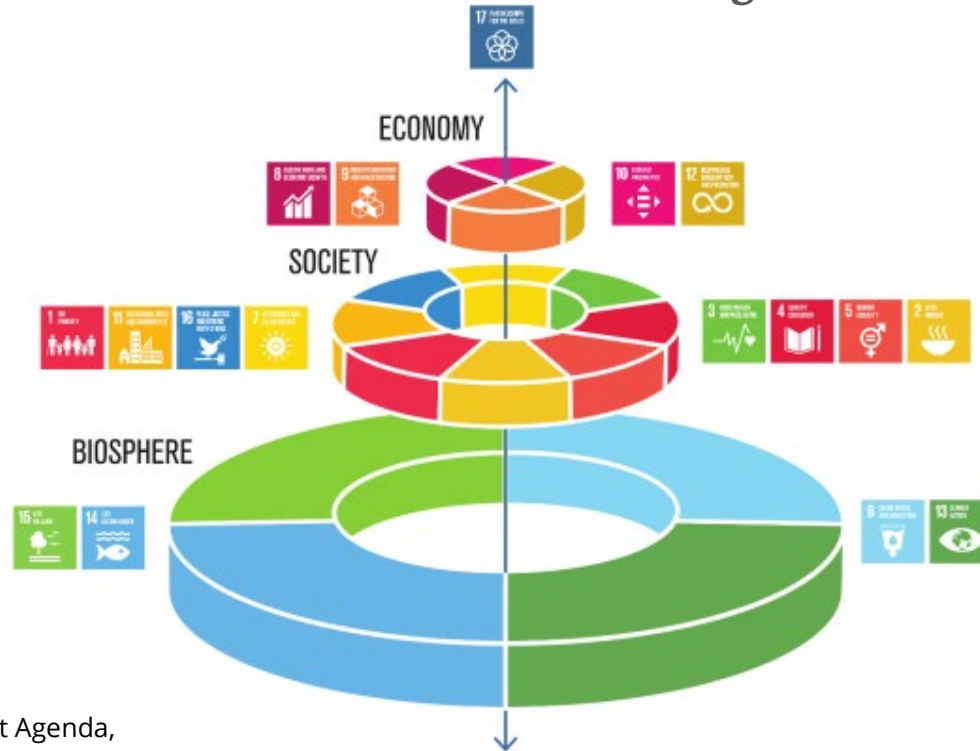


[www.thegef.org](http://www.thegef.org)



**UNOPS PROCARIBE+ Project**

Conservation & restoration of marine and coastal natural capital = the foundations on which to build sustainable economies and reaching the “societal” & “economic” SDGs




**The SDG “wedding cake”**  
alternative representation of the  
2030 UN Sustainable Development Agenda,  
Stockholm Resilience Centre

What others have to say: Friends of Ocean Action -

## “The Business Case for Marine Protection and Conservation”

This World Economic Forum (WEF) IMPACT REPORT proposes that, for marine protection to scale as urgently as is needed, the business case must be framed as part of a **comprehensive area-based management approach: i.e., Marine Spatial Plans (MSPs)** at a national or regional level. Protection needs to be designed and implemented in conjunction with the demands and needs of all other users of and stakeholders in Exclusive Economic Zones (EEZs). Strong protection across even a significant minority of total ocean area will still be an insufficient counter-weight if there is free-for-all extraction in the remaining waters. **These comprehensive ocean management plans should combine protection (through MPAs and OECMs) with managed mixed-use areas, as well as heavy industrial areas, to deliver in the round: sustainable conservation of biodiversity; economic security; and the well-being of local communities**

	Targeted MPA designations	Sector-specific opportunities	Comprehensive business cases/Marine Spatial Plans
What is it?	<ul style="list-style-type: none"> <li>Protection of high priority, but more remote, areas of biodiversity</li> <li>Government-led with strong support from philanthropy</li> </ul>	<ul style="list-style-type: none"> <li>Biodiversity 'win-wins' by partnering with heavy ocean-using industries</li> <li>Potentially OECMs (rather than MPAs)</li> </ul>	<ul style="list-style-type: none"> <li>Ocean spatial mapping</li> <li>Area-based management</li> <li>Full Cost/Benefit/IRR analysis and scenarios</li> </ul>
Opportunity	<ul style="list-style-type: none"> <li>Typically large in scale</li> <li>Few competing stakeholders = option value/long-term security</li> <li>Single stakeholder (fisheries)</li> </ul>	<ul style="list-style-type: none"> <li>Tap into coming (large) wave of ocean capital</li> <li>Secure <i>de facto</i> protection and conservation outcomes</li> </ul>	<ul style="list-style-type: none"> <li>Long-term efficient use of capital and resources (public, private and local communities)</li> </ul>
Risk	<ul style="list-style-type: none"> <li>May not move the needle significantly in meeting ambitious global targets for protection</li> </ul>	<ul style="list-style-type: none"> <li>No existing regulatory frameworks or calculus</li> </ul>	<ul style="list-style-type: none"> <li>Complex, science-based plans (likely multi-year from design to implementation)</li> </ul>
Business case complexity			

the 3-tiered approach proposed in the paper and inspiring the configuration of PROCARIBE+

## Project Components



### Component 1:

Enhancing regional coordination and collaboration for the Caribbean and North Brazil Shelf Large Marine Ecosystems (CLME)



### Component 2:

Enabling national environments for the protection, restoration and sustainable use of coastal and marine resources



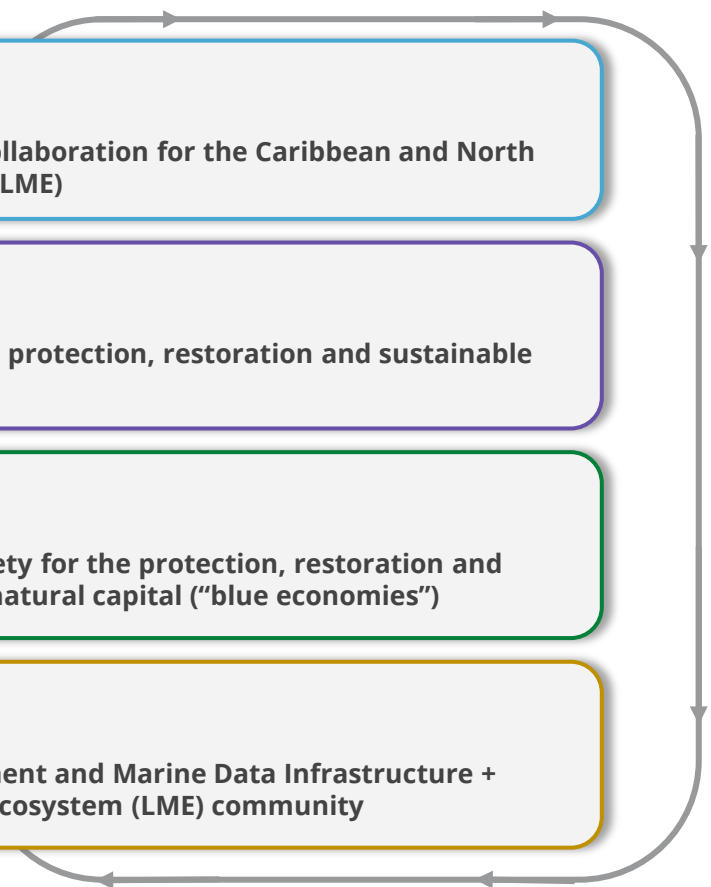
### Component 3:

Catalyzing actions by all sectors of society for the protection, restoration and sustainable use of marine and coastal natural capital ("blue economies")



### Component 4:

Enabling Regional Knowledge Management and Marine Data Infrastructure + Cooperation with global Large Marine Ecosystem (LME) community



1



### Enhanced regional coordination and collaboration

- Regional Ocean Coordination Mechanism (OCM)
- Multi-stakeholder partnership(s)
- New multi-stakeholder regional Strategic Action Programme (SAP)

2



### Enhanced national capacity and enabling conditions

- National Intersectoral Committees (NIC) connected to OCM
- National Blue Economy scoping + Marine Reporting
- Training & Capacity-Building (Marine Spatial Planning, Source-to-Sea, Blue Carbon,...)
- Mainstream the marine environment in Nationally Determined Contributions (NDC) (Blue Carbon,...)

3



### Key actions by all sectors of society

- Micro-financing schemes for Civil Society and MSME supporting oceans (SGP)
- Enabling conditions for a blue carbon financing instrument (country pilot)
- Planning for Blue Economies and Marine Spatial Planning
- Enhanced area-based ocean conservation (MPA/OECM)
- Traceability for key Fisheries Products
- Enhanced gear & practices in spiny lobster fisheries

4



### Knowledge Management and Marine Data Infrastructure

- Knowledge Management Hub “owned” by the OCM Membership, managed by the OCM Secretariat, and supported by the partnership(s)
- “Blueprint” for the regional Marine Data Landscape/Infrastructure
- Development of the Regional “State of the Marine Environment and Associated Economies” (SOME)
- Alliance with IW:LEARN

1



## Enhanced regional coordination and collaboration

### Outcome 1

Implementation of SAP through the Ocean Coordination Mechanism (OCM) and partnership(s)

#### Output 1.1.1

- a. Functioning Interim Coordination Mechanism until operationalization of Ocean Coordination Mechanism
- b. OCM operational / Procaribe+ PMCU Secretariat to OCM
- c. Multi-stakeholder Partnership(s)

#### Output 1.1.2

New Strategic Action Programme (SAP)

#### Main Activities/Deliverables

- Engagement of ICM prior to commencement of OCM
- Establishment & operations of OCM Secretariat
- Establishment & operations of OCM EG, SG and Working Groups
- Development of OCM Work Programme
- Independent review of first CLME TDA/SAP process
- Development and endorsement of new SAP
- Adoption of OCM Hub, MDI Blueprint and SOME
- Solution for OCM Sustainability
- Adoption of OCM Partnership(s) model and engagement in OCM activities



# LME “traditional” TDA-SAP Approach: Analysis of the problems that affect the marine environment

PROCARIBE+ proposes a *paradigm shift*:

Analysis of ~~problems~~ **opportunities** (*Blue Economy*) &  
**challenges** (*protect & restore the resource base*)

2



## Enhanced national capacity and enabling conditions

### Outcome 2

National-level capacity and conditions for EBM/EAF and marine-based, “green-blue” socio-economic development

#### Output 2.1.1

National Intersectoral Committees (NICs)

#### Output 2.1.2

National State of Marine Environment & Associated Economies (SOME) / Blue Economy (BE) / Natural Capital Accounting (NCA)

#### Output 2.1.3

Training & Capacity Building

#### Output 2.1.4

Nationally Determined Contributions (NDCs)

### Main Activities/Deliverables

- (Advocacy for) National Intersectoral Committees connected to OCM and supporting national processes
- National SOME, BE scoping, Natural Capital Accounting
- Training and Capacity-building (MSP, Source-to-Sea,...)
- Mainstreaming of the marine environment in 2025 NDC's (Blue Carbon,...): Belize, Costa Rica, Honduras, Jamaica and Panama

3

## Enhanced national capacity and enabling conditions



### Outcome 3.1

Civil society and MSME contributions to ocean conservation & blue economies

### Output 3.1.1

- a. Microfinancing (Small Grants Programme)
- b. Microfinancing through other sources (Ocean Innovation Challenge)

### Main Activities/Deliverables

- **Micro-financing for civil society and MSME's supporting actions that advance implementation of the regional strategies, action plans..., (CLME+ SAP, "People Managing Oceans" civil society SAP, Regional Action Plans on Habitats, Pollution, Fisheries,...)**
- **Min. 30 grants in Antigua & Barbuda, Haiti, Jamaica, St. Kitts & Nevis, Saint Lucia**
- **Exchanges amongst grantees**

3

## Enhanced national capacity and enabling conditions



### Outcome 3.2

Private capital supporting stress reduction & blue economy

### Output 3.2.1

Enabling conditions for the development of carbon-credits based projects in Panama for seagrasses and tropical peatlands

### Main Activities/Deliverables

- Quantification of carbon in seagrass pastures around Isla Escudo de Veraguas-Degó (Site 1), and in tropical peatlands at San San Pond Sak (Site 2) and Damani-Guariviara (Site 3)
- (Pre)feasibility studies for development of a sustainable financial mechanism
- Collaboration with regional initiatives to develop common approach for blue carbon projects

3

## Enhanced national capacity and enabling conditions



### Outcome 3.3

Expansion of Blue Economy, MSP & MPA/OECM

#### Output 3.3.1

- Blue Economy (BE) Strategy & Marine Spatial Planning (MSP)
- Advocacy/Awareness for BE & MSP

#### Output 3.3.2

Marine Protected Areas (MPA) & Other Effective Conservation Measures (OECM)

### Main Activities/Deliverables

- BE Strategy/Plan in Costa Rica
- MSP: Colombia, Dominican Republic, Meso-American Reef Region, Trinidad and Tobago and Venezuela
- MSP Regional workshop
- Advocacy for target of 10% MSP coverage in CLME+ region
- MPA/OECM: Colombia, Dominican Republic, Meso-American Reef Region, Cuba

Outputs	Participating countries	Products
3.3.1.a Marine Spatial Planning (MSP)	Dominican Republic	-Coarse-scale MSP covering a substantial part of the EEZ (min. 150,000 km <sup>2</sup> ) + (at least 1 additional), Finer-scale MSP, covering a “high-priority” marine-coastal area, of no less than 1,400 km <sup>2</sup>
	Meso-American Reef (MAR) region: Belize, Guatemala, Honduras	MSP exercise for the MAR with focus on reconciling shipping with reef conservation, in support of the development and submission to the International Maritime Organization (IMO) of a proposal for the designation of part of the MAR region as a <b>Particularly Sensitive Sea Area</b> , tentative extension: approx. 56,097 km <sup>2</sup>
	Trinidad and Tobago	Multi-sector MSP covering 2,942 km <sup>2</sup> in the <b>Gulf of Paria</b>
	Venezuela	Multi-sector MSP covering 5,200 km <sup>2</sup> in the <b>Gulf of Paria</b>
	Colombia	Multi-sector MSP for the <b>Bay of Cartagena</b> and adjacent areas (~274km <sup>2</sup> )
3.3.1.a Blue Economy/ Strategies/ Plan	Costa Rica	Blue Economy Strategy/Plan for the Caribbean

Outputs	Participating countries	Products
<b>3.3.2. Enhanced area-based ocean conservation (MPA/OECM)</b>	Colombia (MPA)	-Management plan and priority management actions for newly declared “Reserva Natural Cordillera Submarina Beata” (Beata Ridge) MPA (extension: 33,125.47 km <sup>2</sup> ) -New Regional Protected Area (527.74 km <sup>2</sup> ) in Punta San Bernardo and Chichimán - Rincón del Mar sector -New MPA (27.31 km <sup>2</sup> ) for the Varadero sector (Mission Blue “hope spot”) of the Bay of Catagena
	Dominican Republic (MPA/OECM)	-Inclusion of (part of the) “Beata Ridge” seamount system (Dominican part) in the Dominican Republic’s system of MPAs (new/expanded MPA, tentative extension: 10,000 to 13,000 km <sup>2</sup> ) -Creation of (pilot) no-take/fish replenishment and/or management zones, cumulatively covering a marine area of no less than 35 km <sup>2</sup>
	Meso-American Reef region: Belize, Guatemala and Honduras (MPA/OECM)	-Community-based Fisheries Replenishment Zones (min. 100 km <sup>2</sup> ) -Submission to IMO of proposal for the designation of part of the MAR region as a Particularly Sensitive Area under the International Maritime Organization (IMO), tentative extension: approx. 56,097 km <sup>2</sup> (OECM)
	Cuba	TBD

3

## Enhanced national capacity and enabling conditions



### Outcome 3.4

Traceability systems for key fisheries and seafood

### Output 3.4.1

- Key fisheries and seafood under traceability system (national)
- Enabling conditions for expansion of traceability standards (regional)

### Main Activities/Deliverables

- Traceability systems in place for 3 selected key fisheries (spiny lobster, queen conch and shrimp (fisheries and aquaculture) in 8 countries: **Bahamas, Belize, Brazil, Guatemala, Guyana, Honduras, Panama and Suriname**
- Submission of recommendations for the implementation of seafood traceability systems to corresponding regional entities
- Enabling conditions for the upscaling and replication towards 94,800 tons/yr traceable by 2030 (=post-project)



3

## Enhanced national capacity and enabling conditions



### Outcome 3.5

Reduction of ghost fishing & impacts from unsustainable fishing

### Output 3.4.1

- a. Solutions for reduction of unsustainable fishing gear and practices (abandoned, lost and discarded fishing gear - ALDFG)
- b. Measures against ghost fishing (regional)

### Main Activities/Deliverables

- Solutions to reduce negative impacts from unsustainable fishing gear and practices in industrial spiny lobster fisheries (ALDFG) (Honduras)
- Creation of a Spiny Lobster Trap Fishing Working Group/Committee
- Study on the impacts of ALDFG and potential solutions - focus on spiny lobster and associated regulatory frameworks
- Exchange of experiences and lessons learned

# 4

## Knowledge Management and Marine Data Infrastructure



### Outcome 4.1

Marine Data/information Management Infrastructure/Network enabled

#### Output 4.1.1

- a. Project information available online
- b. Online Regional Knowledge Management HUB

#### Output 4.1.2

- a. MDI “blueprint” (design)
- b. MDI implementation of selected elements

#### Output 4.1.3

Regional “SOMEE” State of the Marine Environment and associated Economies” (SOMEE)



### Main Activities/Deliverables

- Scoping exercise (“niche”) for OCM Regional Info Hub
- Review of existing CLME+ Hub
- Transition from CLME+ Hub to OCM Hub
- OCM adoption of Hub
- OCM Hub sustainability plan
- OCM MDI Working Group
- Inventory of existing MDI
- Proposal of an MDI Blueprint
- OCM adoption of MDI Blueprint
- Development of key elements of MDI
- OCM SOMEE WG
- OCM adoption of revised “SOMEE approach”
- Development of SOMMEE content / clearance by IGOs
- OCM adoption of SOMMEE

# 4

## Knowledge Management and Marine Data Infrastructure



### Outcome 4.2

Global dissemination & sharing of experiences (Collaboration with IWLearn)

### Output 4.2.1

IWLearn Alliance

### Output 4.2.2

Participation in GEF IW:LEARN and other Global Marine/LME community events

### Output 4.2.3

Dissemination of Best Practices



### Main Activities/Deliverables

- Integration of OCM Hub with IWLearn KM tools
- Fostering change of approach for TDA from transboundary “problems” towards “challenges and opportunities”
- Prototype for “LME” MDIs (globally)
- Remote Sensing in support of marine planning and management
- Participation in relevant global/regional events
- Project video, story map and 3 experience notes
- Contributions to IWLearn

5



## Monitoring and Evaluation

### Outcome 5.1

Monitoring & Evaluation  
compliant with GEF/UNDP rules

### Output 5.1.1

Inception Workshop and Report

### Output 5.1.2

GEF Project Implementation Review  
and M&E of GEF core Indicators and  
Safeguards Action Plans

### Output 5.1.3

Mid-term Evaluation

### Output 5.1.4

Final Evaluation



### Main Activities/Deliverables

- Inception Workshop and Inception Phase Report
- GEF Project Implementation Review, and M&E of GEF core Indicators and Safeguards Action Plans
- Independent Mid-Term Review
- Independent Final Evaluation

Project GEF Core Indicators		Expected at CEO Endorsement
2	<b>Marine protected areas</b> created or under improved management for conservation and sustainable use (Million Hectares)	4,368,052 hectares
5	Area of <b>marine habitat under improved practices</b> (excluding protected areas)( Million Hectares)	440 million hectares
7	<b>Number of shared water ecosystems</b> (fresh or marine) under new or improved cooperative management	2 (Caribbean and North Brazil Shelf LMEs)
8	Globally over-exploited <b>marine fisheries</b> moved to more sustainable levels (thousand metric tons)( Percent of fisheries, by volume)	The over-exploited queen conch fishery is brought to more sustainable levels through application of traceability to annual exports corresponding to 515 metric tons/yr
11	Number of <b>direct beneficiaries disaggregated by sex</b> as co-benefit of GEF investment	Female 162,327 Male 259,328 Total 421,655

# PROCARIBE+ Safeguards

## ▶ Environmental and Social Management Framework (ESMF)

- Establishes the procedures and measures needed to manage risks identified, especially as activities not fully defined at PPG phase

## ▶ Stakeholder Engagement Plan (SEP)

## ▶ Gender Action Plan (GAP)

## ▶ Indigenous Peoples Planning Framework (IPPF)

# UNDP/GEF PROCARIBE+ Project Document

## Section IV. Results and Partnership

### footnote:

whereas **all countries from the CLME+ region will be able to participate in the activities**, direct financial support from the PROCARIBE+ project grant will be available for this purpose to **GEF-eligible countries that provided a GEF OFP letter for the PROCARIBE+ PIF and/or that signed the UNDP PROCARIBE+ Project Document\***.

GEF-eligible countries from the CLME+ region that provided a GEF OFP letter for the PROCARIBE+ PIF

non-GEF eligible countries from the CLME+ region

non-GEF eligible countries from the CLME+ region that provided a co-financing commitment for PROCARIBE+

## PROCARIBE+ Project (2023-2028): “PARTICIPATING”\* COUNTRIES

Antigua & Barbuda	Aruba	Bahamas	Barbados	Belize	Brazil	Colombia	Costa Rica
Cuba	Curacao	Dominica	Dominican Republic	France on behalf of French Guiana, Guadeloupe, Martinique, Saint Barth, Saint Martin	Grenada	Guatemala	Guyana
Haiti	Honduras	Jamaica	Mexico	Netherlands on behalf of Bonaire, Saba, Sint Eustatius	Nicaragua	Panama	St. Kitts & Nevis
Saint Lucia	Sint Maarten	St. Vincent & the Grenadines	Suriname	Trinidad & Tobago	USA	UK on behalf of Anguila*, BVI, Montserrat, Turks & Caicos*, Cayman Isl	Venezuela



	# of OUTPUTS	# of outputs with N/ITI	GEF OFF LETTER	COMPONENT 1			COMPONENT 2			COMPONENT 3										COMPONENT 4								
				OCEAN COORDINATION MECHANISM (OCM)	PARTNERSHIPS	new STRATEGIC ACTION PROGRAMME (SAP)	NATIONAL INTERSECTORAL COMMITTEES	National SOMEE, BE SCOPING, NCA (2)	TRAINING, CAPACITY BUILDING	2025 NDC's (6)	2025 NDC'S (regional workshops)	SMALL GRANTS (6)	BLUE CARBON - INNOVATIVE FINANCING (1)	BE PLANNING (1)	MARINE SPATIAL PLANNING (min. 7)	MARINE SPATIAL PLANNING - ENABLING	MPA / OECM (6)	TRACEABILITY - LOBSTER (4)	TRACEABILITY - QUEEN CONCH (3)	TRACEABILITY - SHRIMP (min. 5)	TRACEABILITY - ENABLING	LOBSTER GEAR PILOT (1)	LOBSTER GEAR (TRAPS) - ENABLING	ONLINE OCM HUB	BLUEPRINT MDI	regional SOMEE	IWLEARN - PROCARIBE+ SPECIAL ALLIANCE	IWLEARN - STANDARD PARTICIPACION
1 Antigua and Barbuda	17	1	☑	DB	DB	DB	DB	DB	DB	NI			DB					DB		DB		DB	DB	DB	DB	DB	DB	DB
2 the Bahamas	17	1*	☑	DB	DB	DB	DB	DB	DB				DB			NI		DB		DB		DB	DB	DB	DB	DB	DB	DB
3 Barbados	17	0	☐	DB	DB	DB	DB	DB	DB				DB							DB		DB	DB	DB	DB	DB	DB	DB
4 Belize	17	2*	☑	DB	DB	DB	DB	DB	DB	NI		DB	TI	DB	TI	NI		DB		DB		DB	DB	DB	DB	DB	DB	DB
5 Brazil	17	1*	☑	DB	DB	DB	DB	DB	DB	DB		DB	DB		NI		NI	DB		DB		DB	DB	DB	DB	DB	DB	DB
6 Colombia	17	2	☑	DB	DB	DB	DB	DB	DB	DB		DB	NI	DB	NI			DB		DB		DB	DB	DB	DB	DB	DB	DB
7 Costa Rica	16	3	☑	DB	DB	DB	DB	DB	NI	DB	NI	DB		NI				DB		DB		DB	DB	DB	DB	DB	DB	DB
8 Cuba	17	1	☑	DB	DB	DB	DB	DB	DB	DB		DB	DB	NI				DB		DB		DB	DB	DB	DB	DB	DB	DB
9 Dominica	17	0	☐	DB	DB	DB	DB	DB	DB	DB		DB	DB					DB		DB		DB	DB	DB	DB	DB	DB	DB
10 Dominican Republic	17	2	☑	DB	DB	DB	DB	DB	DB	DB		DB	DB	NI	DB	NI		DB		DB		DB	DB	DB	DB	DB	DB	DB
11 Grenada	17	0	☐	DB	DB	DB	DB	DB	DB	DB		DB	DB					DB		DB		DB	DB	DB	DB	DB	DB	DB
12 Guatemala	16	1	☑	DB	DB	DB	DB	DB	DB	DB		DB	TI	DB	TI			NI	DB		DB		DB	DB	DB	DB	DB	DB
13 Guyana	16	1	☑	DB	DB	DB	DB	DB	DB	DB		DB	DB				NI	DB		DB		DB	DB	DB	DB	DB	DB	DB
14 Haiti	17	1	☑	DB	DB	DB	DB	DB	DB	DB		DB	DB	NI				DB		DB		DB	DB	DB	DB	DB	DB	DB
15 Honduras	17	3*	☑	DB	DB	DB	DB	DB	DB	DB	NI	DB	TI	DB	TI	NI		DB		DB	NI	DB	DB	DB	DB	DB	DB	DB
16 Jamaica	17	2	☑	DB	DB	DB	DB	DB	DB	DB	NI	DB	DB	DB				DB		DB		DB	DB	DB	DB	DB	DB	DB
17 Mexico	17	0	☐	DB	DB	DB	DB	DB	DB	DB		DB	TI	DB	TI			DB		DB		DB	DB	DB	DB	DB	DB	DB
18 Nicaragua	17	0	☐	DB	DB	DB	DB	DB	DB	DB		DB	DB					DB		DB		DB	DB	DB	DB	DB	DB	DB
19 Panama	16	3*	☑	DB	DB	DB	DB	DB	DB	DB	NI	DB		NI			DB		NI		NI	DB		DB	DB	DB	DB	DB
20 Saint Kitts and Nevis	17	1	☑	DB	DB	DB	DB	DB	DB	DB		DB	NI				DB		DB		DB		DB	DB	DB	DB	DB	DB
21 Saint Lucia	17	1	☑	DB	DB	DB	DB	DB	DB	DB		DB	NI				DB		DB		DB		DB	DB	DB	DB	DB	DB
22 Saint Vincent and the Grenadines	17	0	☐	DB	DB	DB	DB	DB	DB	DB		DB	DB					DB		DB		DB	DB	DB	DB	DB	DB	DB
23 Suriname	16	1	☑	DB	DB	DB	DB	DB	DB	DB		DB	DB					NI	DB		DB		DB	DB	DB	DB	DB	DB
24 Trinidad and Tobago	17	1	☑	DB	DB	DB	DB	DB	DB	DB		DB	NI	DB				DB		DB		DB		DB	DB	DB	DB	DB
25 Venezuela	16	1	☑	DB	DB	DB	DB	DB	DB	DB		DB	NI	DB				DB		DB		DB		DB	DB	DB	DB	DB
45 non GEF-eligible States & Territories	15	0	N/A	DB	DB	DB	DB	DB	DB	DB		DB	DB					DB		DB		DB		DB	DB	DB	DB	DB