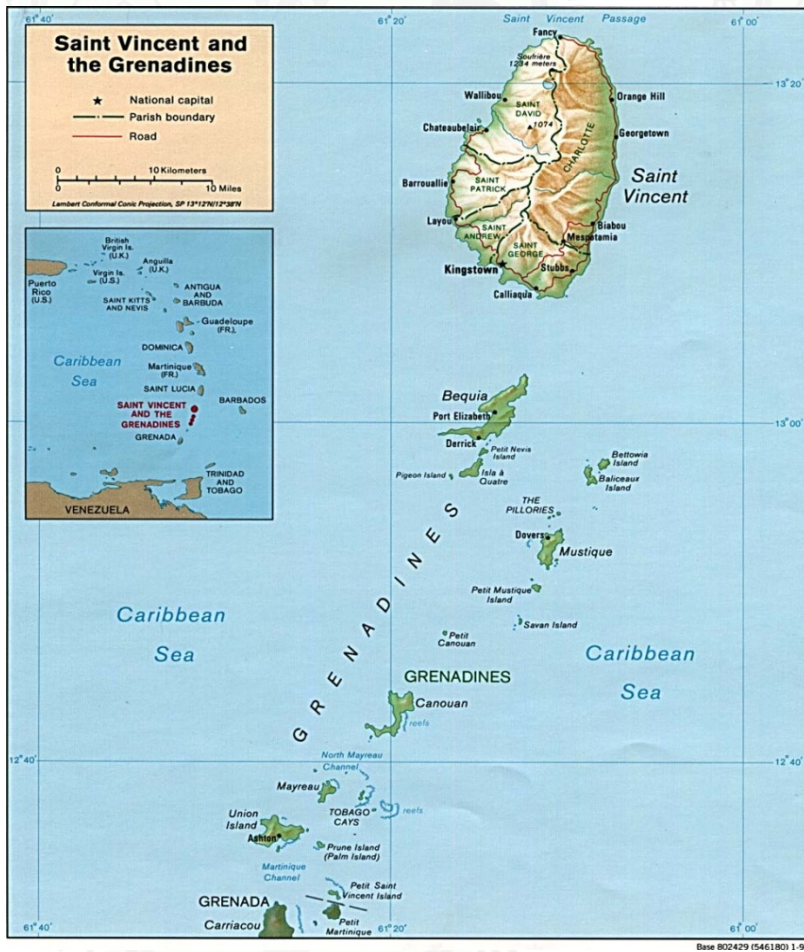




# NATIONAL TSUNAMI PROGRAM: ST. VINCENT AND THE GRENADINES



# NEMO MISSION STATEMENT



- To coordinate the use of all available resources (local, regional, and international) to ensure that all the people of St. Vincent and the Grenadines are better able to mitigate against all disasters, prepare for disasters, respond to disasters and recover from the impact of disasters in the shortest possible time.



# How can St. Vincent and the Grenadines be affected by tsunamis?

St. Vincent and the Grenadines can be affected by a tsunami in different ways:

1. The rupturing of the Caribbean plate- Lesser Antilles Subduction Zone (regional tsunami).
2. Distant earthquakes outside of the Caribbean region can generate tele-tsunamis (distant tsunamis). E.g. the Azores- Gibraltar fracture zone near Portugal.
3. An eruption from the submarine volcano Kick 'em Jenny or La Soufriere-pyroclastic flow (local tsunami).



# History: Tsunami impacts- St. Vincent and the Grenadines

1867- 7.5 magnitude earthquake- USVI

- Reports from Cumberland, Bequia, Canouan.
- Waves about 2 ft high with no distinct crest
- No tremor felt in SVG

1902- Volcanic Eruption- La Soufriere

- Reports from Georgetown
- Wave about 1m high
- Inundation- >10m

1868- Earthquake- USVI

- Report from Bequia
- Waves about 3 ft high with no distinct crest
- No tremor felt in SVG

1939- Volcanic Eruption- Kick em Jenny

- Grenada, Barbados and the Southern Grenadines were affected
- Series of waves about 2m high observed



# St. Vincent and the Grenadines National Tsunami Programme

- 2008- Began in 2008 following the Global Response to significantly increase awareness, information, knowledge and preparedness plans and actions for tsunami hazards and their related hazards. Started with knowledge building and awareness in schools (Training for teachers and students)
- 2014- Program enhanced to focus on coastal communities of Clare Valley and Rose Place (Kingstown)
- 2016- First Tsunami Standard Operating Procedures (SOPs) were drafted



# St. Vincent and the Grenadines National Tsunami Programme

- 2018- First pilot for Tsunami Ready Communities Programme (Union Island)
- 2020- Union Island was recognized as Tsunami ready by UNESCO standards
- 2023- Parish of St. George was recognized as Tsunami ready by UNESCO standards
- 2024- Expansion of Pilot Tsunami Ready Programme to Bequia and Parish of St. Andrew.



# Why Union Island & St. George parish?

With most of our economic activity/assets concentrated in St. George parish, the importance of preparation and protection of this area cannot be slighted.

Examples of Communities that benefit from the Pilot Programme:

- **Kingstown** – Capital- most government buildings
- **Arnos Vale** – Major sporting facilities on island
- **Indian Bay, Calliaqua, Villa, Ratho Mill** – Tourism Hotspot, hotels
- **Argyle** – International Airport
- **Union Island**- most businesses located several meters from the coast



# **Institutional Mechanisms for Tsunami Warnings**

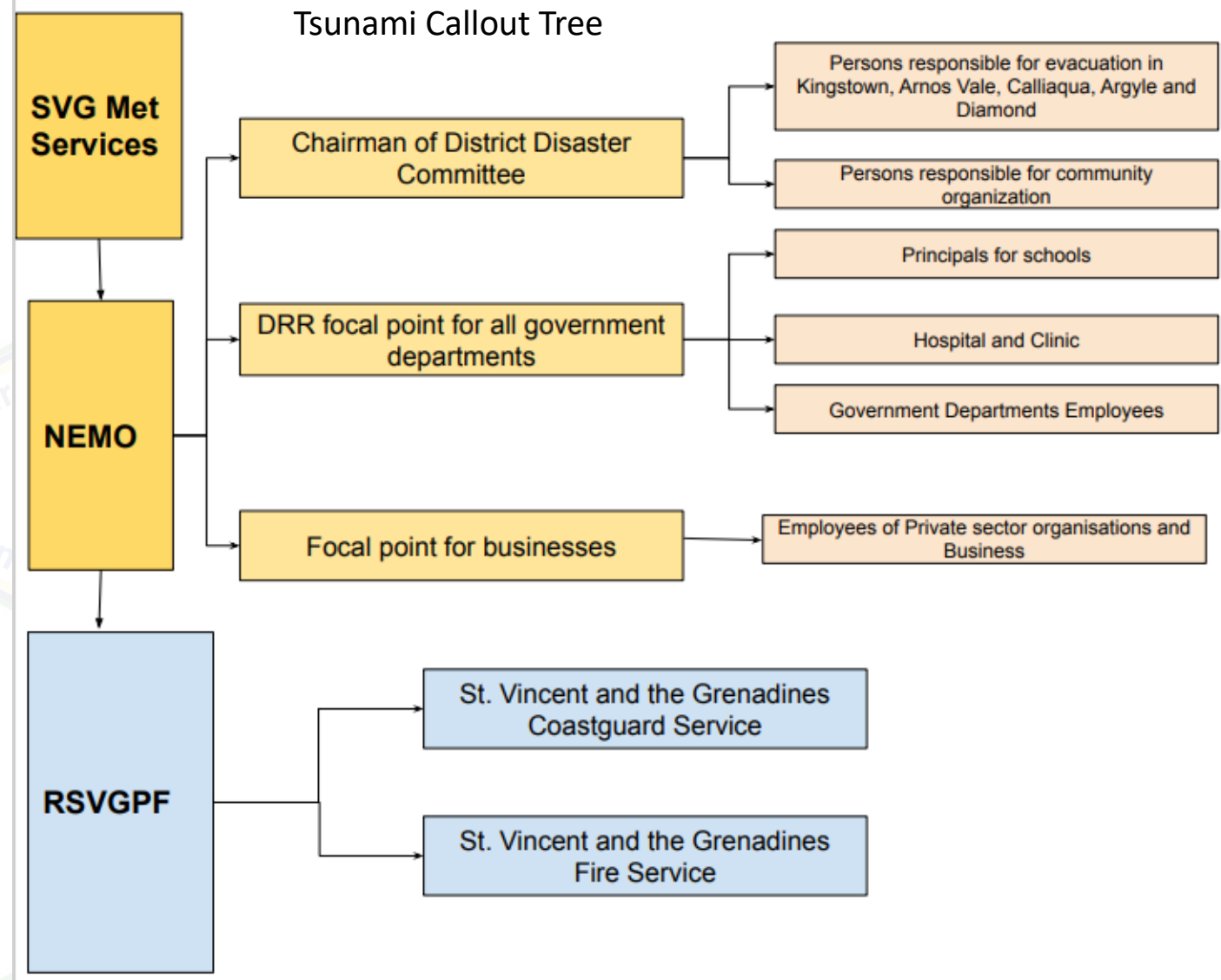
1. National Tsunami Warning Focal Point (TWFP) - **SVG Meteorological Services**
2. Tsunami National Contact – **Ms. Michelle Forbes (Director of NEMO)**
3. National Tsunami Warning Centre (NTWC) - **NEMO**
4. National Tsunami Board

**Tsunami Ready activities under the National DRR Programme  
Guided by the CDM framework and the CWP of SVG**





# Tsunami Callout Tree

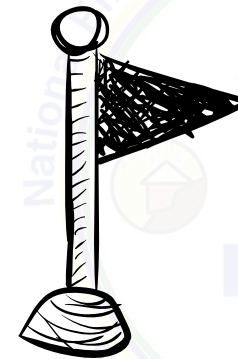




PTWC  
Tsunami Threat/Info message



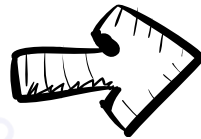
NEMO  
Alert Level message



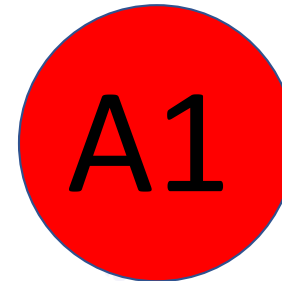
District Disaster Committee  
Chairperson



Raise Alarm



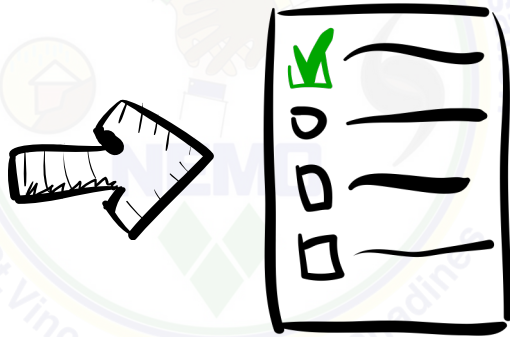
Evacuation process



Assembly point

If a tsunami warning is issued by NEMO  
the following will occur:





Account for all members



### Community EWS

- Community WhatsApp Groups
- Church bells
- Megaphones
- Town criers
- Conch shell

### National EWS COMMS

- VHF radios
- Email
- Radio & TV
- Telephone
- CAP.CAP
- Social Media



# Population must also be guided by natural signs.

## Preventive Tsunami Evacuation Order –

An evacuation order issued by national authorities based on natural tsunami warning signs and in the absence of any official product from the PTWC.

**BE TSUNAMI SMART, KNOW THE NATURAL SIGNS**

**IF AT THE BEACH AND YOU:**

**FEEL** → **RUN**  
a very strong earthquake?

**SEE** → **RUN**  
the water withdraw an unusual distance?

**HEAR** → **RUN**  
a strange roar?

**RUN** to high ground or inland  
if **ANY** of these signs occur



# TSUNAMI MITIGATION IN SVG

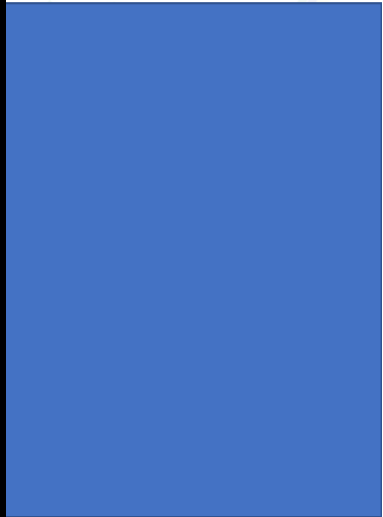
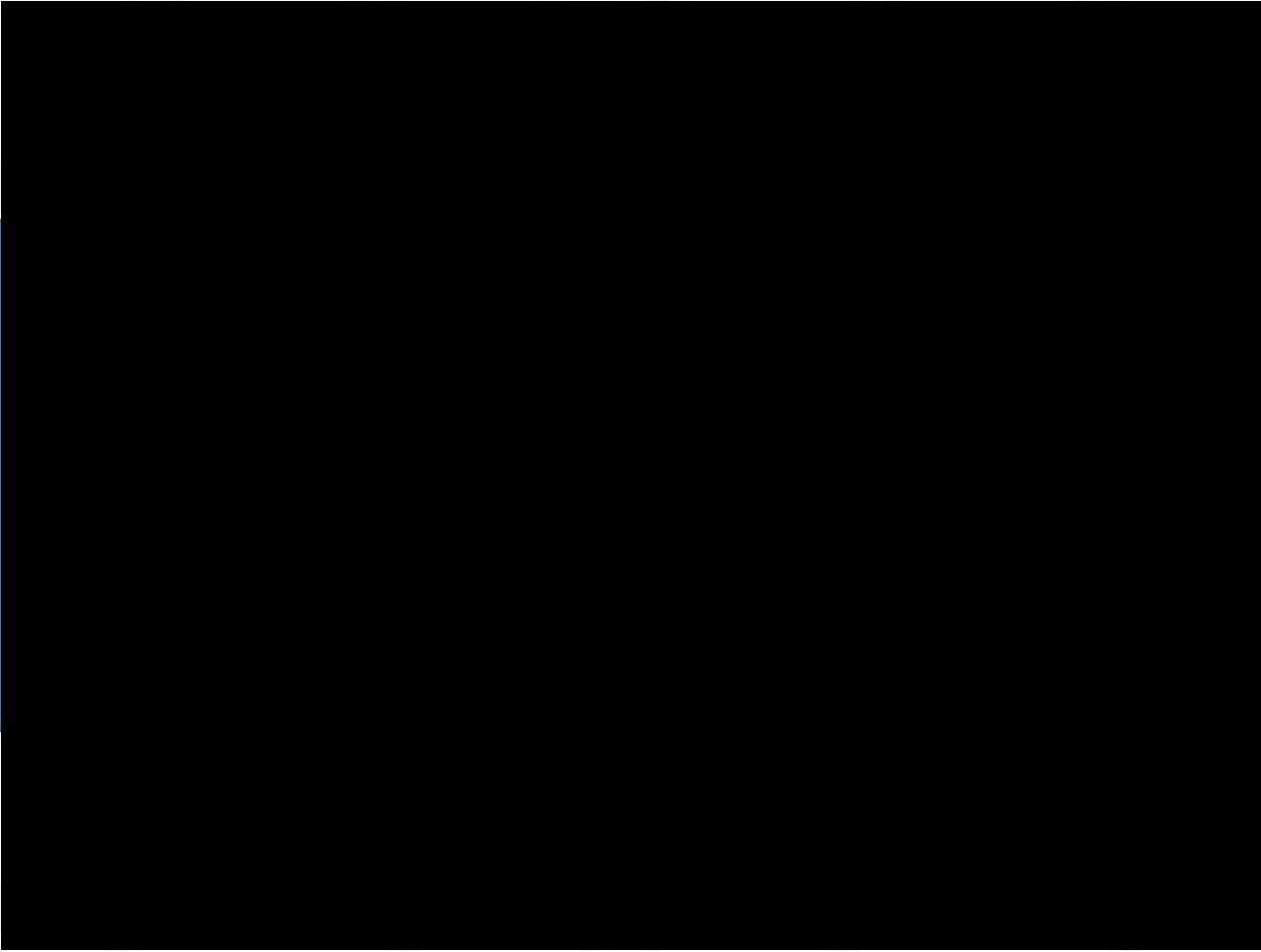
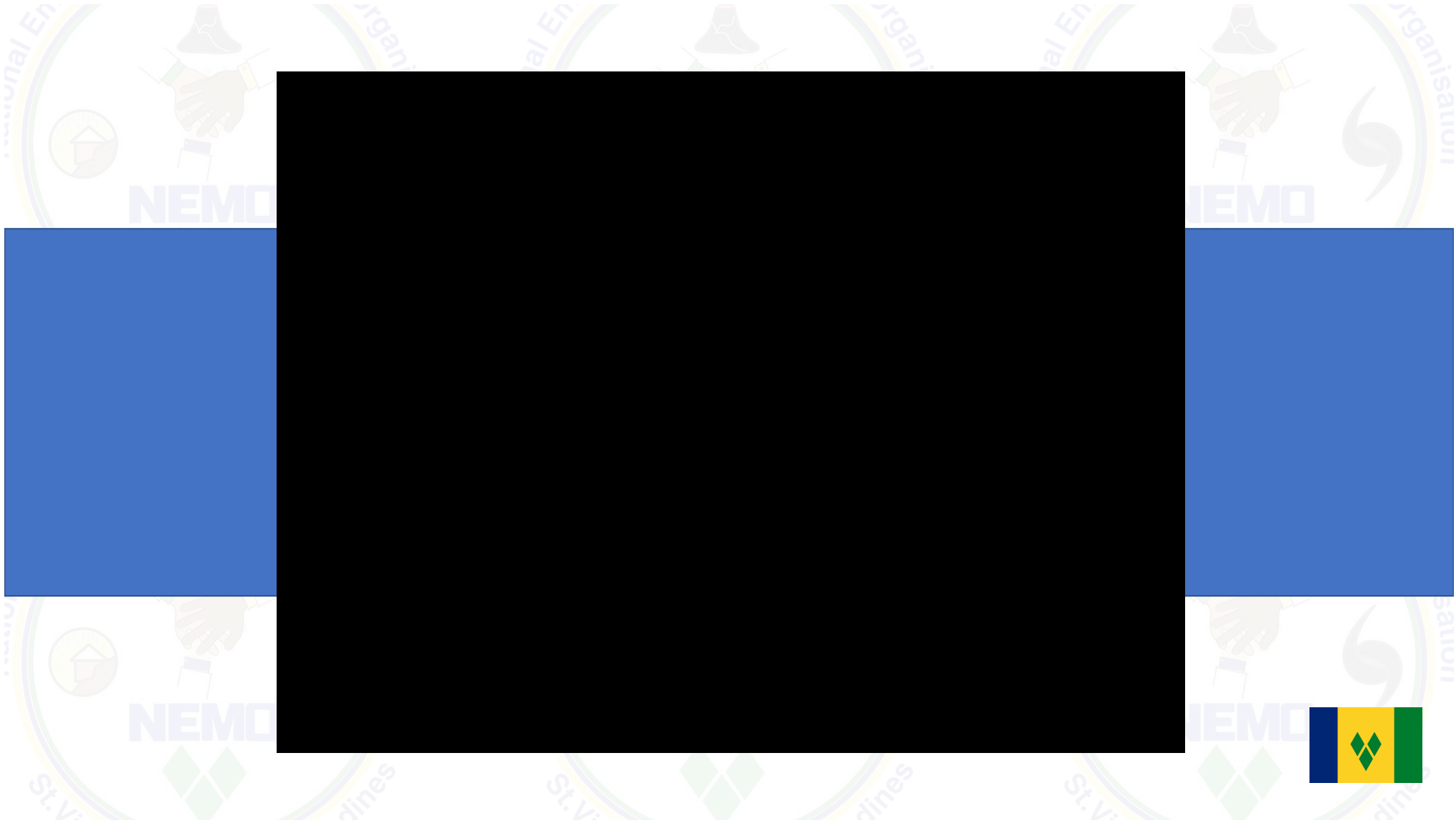




# Challenges to the Programme

- Finances
- Data
- Increase situational Awareness
  - Support the public education
  - Support response and preparedness
- Political will – leaders of society, greater representation at the cabinet level.
- Risk Perception
  - Probability of occurrence perceived as low
  - Public Education Low







La Soufriere, 2023  
2021 Crater and crater lake



Muchas Gracias!