



National Emergency Services

PRODUCED BY DIMINSKI REWERU

NAURU BACKGROUND

- ▶ Nauru is the third-smallest country in the world, with an Area of 21km square.
- ▶ Independence 1968, led by our founding President the late Mr Hammer DeRoburt
- ▶ Estimate population is just over 13 thousands
- ▶ The country has 14 Districts
- ▶ Located south of the equator, isolated and mainly dependence on importation of goods.
- ▶ Nearest county is Kiribati, about 707km or 2 and half hour flight away.
- ▶ Used to be one of the richest country in the world, per capita (1900)
- ▶ 80% of the land has been mined and uninhabitable
- ▶ Highest point 70m above sea level



NAURU SATELLITE VIEW

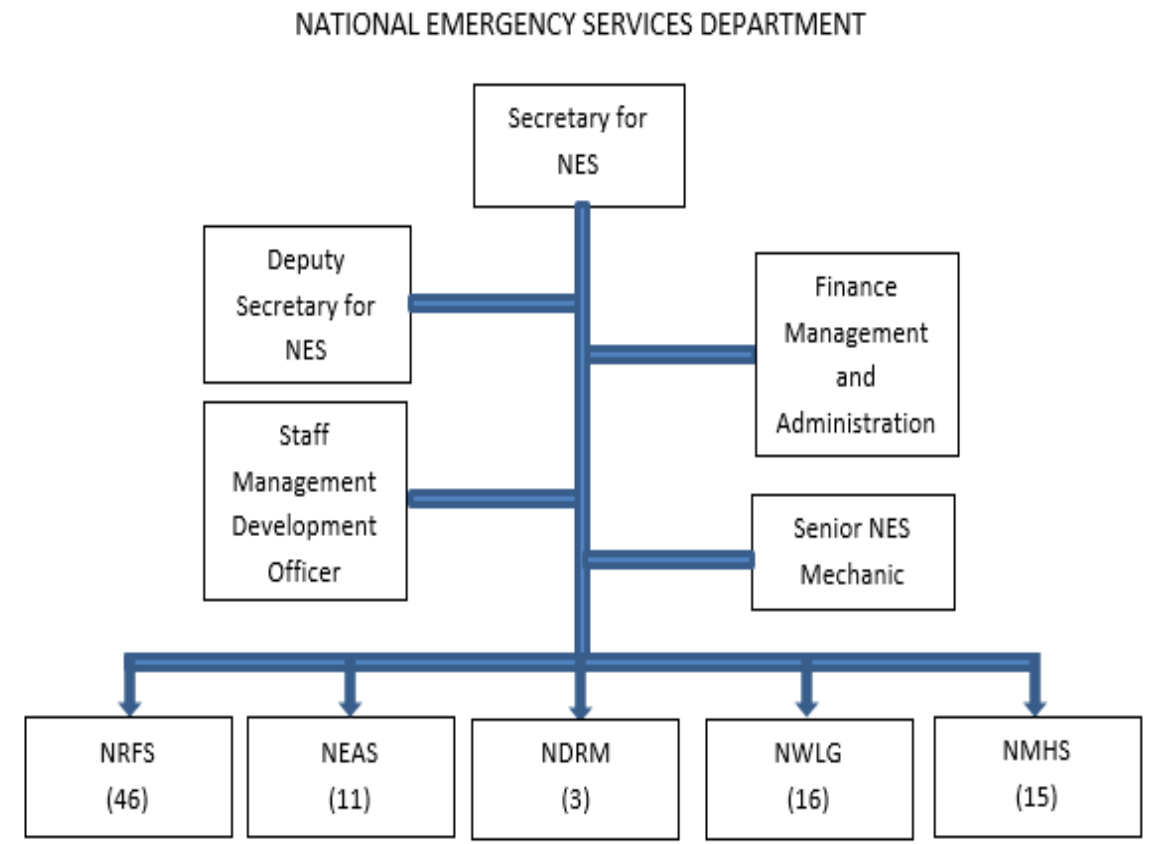
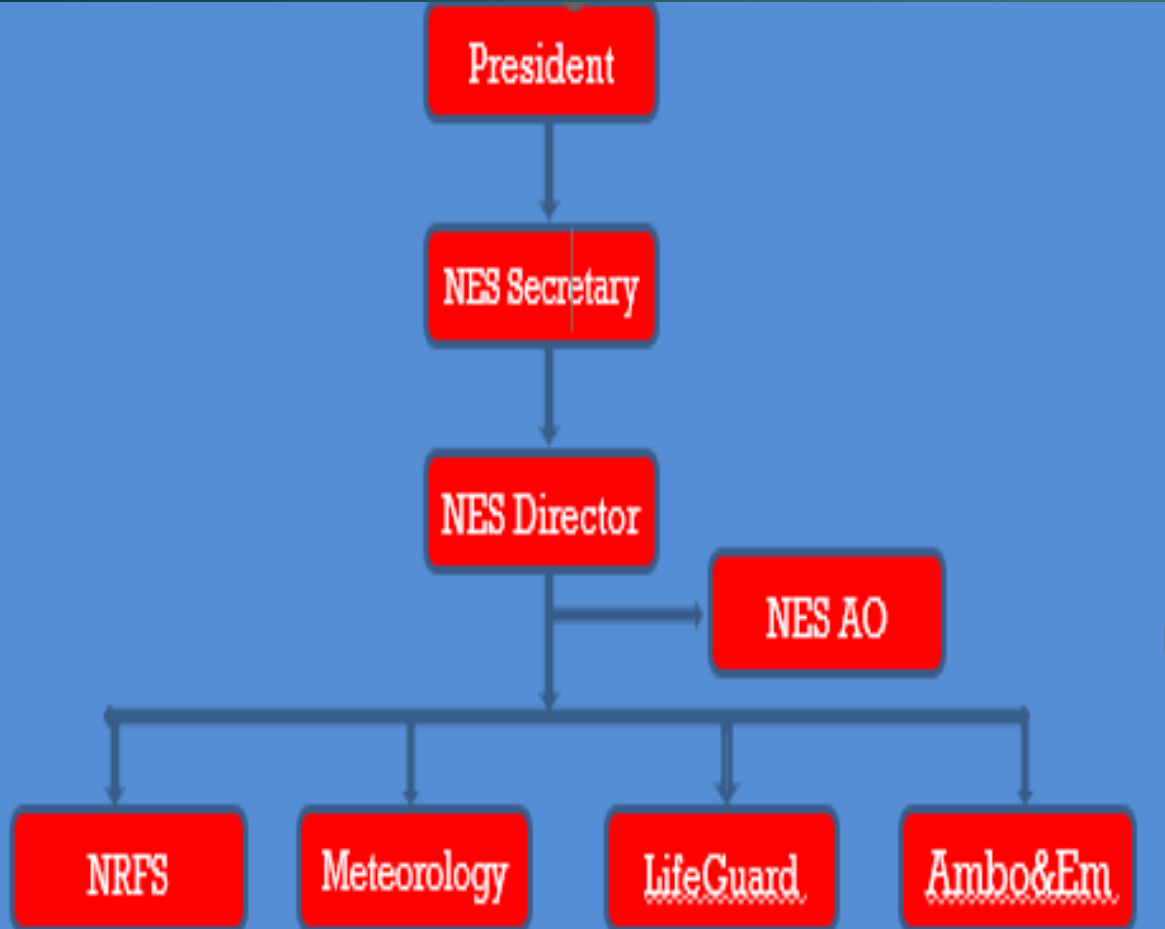


NES OVERVIEW

- ▶ The establishment of the National Emergency Services (N.E.S.) was on the 11th of May 2015.
- ▶ The principle behind the establishment of the N.E.S. department is to consolidate all emergency services under one ministry and to oversee the operation and services of the five sections which come under the N.E.S. department.
- ▶ NES establishment is also contributing in achieving the goals in Nauru's National Sustainable Development Strategy 2019-2030, Priority Area 4 Cross-Cutting Sectors. Particularly Cross Goal 5.
- ▶ Nauru is also complying under the Sendai Framework, Priority 2: *Strengthening disaster risk governance to manage disaster risk.*



NES STRUCTURE

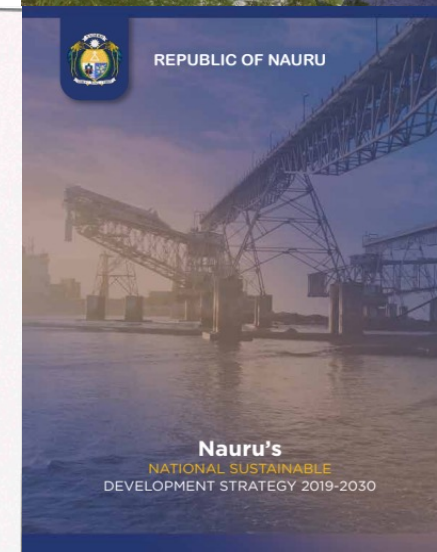
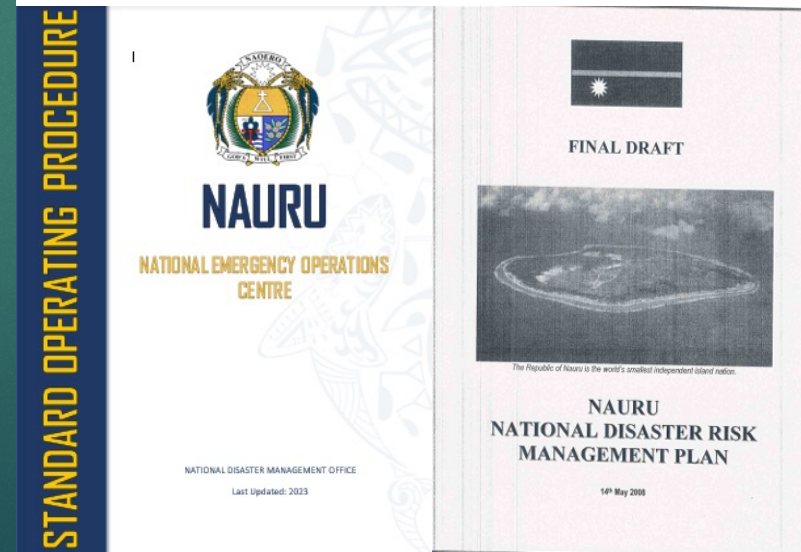


NES Full Establishment:

96 full members

NES GOVERNANCE

- ▶ NDRM PLAN 2008
- ▶ RONAdapt 2015
- ▶ NDRM ACT 2016
- ▶ NSDS 2019-2030
- ▶ SREM 2021-2023
- ▶ National Tsunami Plan 2022 (Draft)
- ▶ Nauru NEOC SOP 2023 (Draft)
- ▶ RFS ACT 2019
- ▶ Met Act 1906



DRM STRUCTURE AND RELATIONSHIP

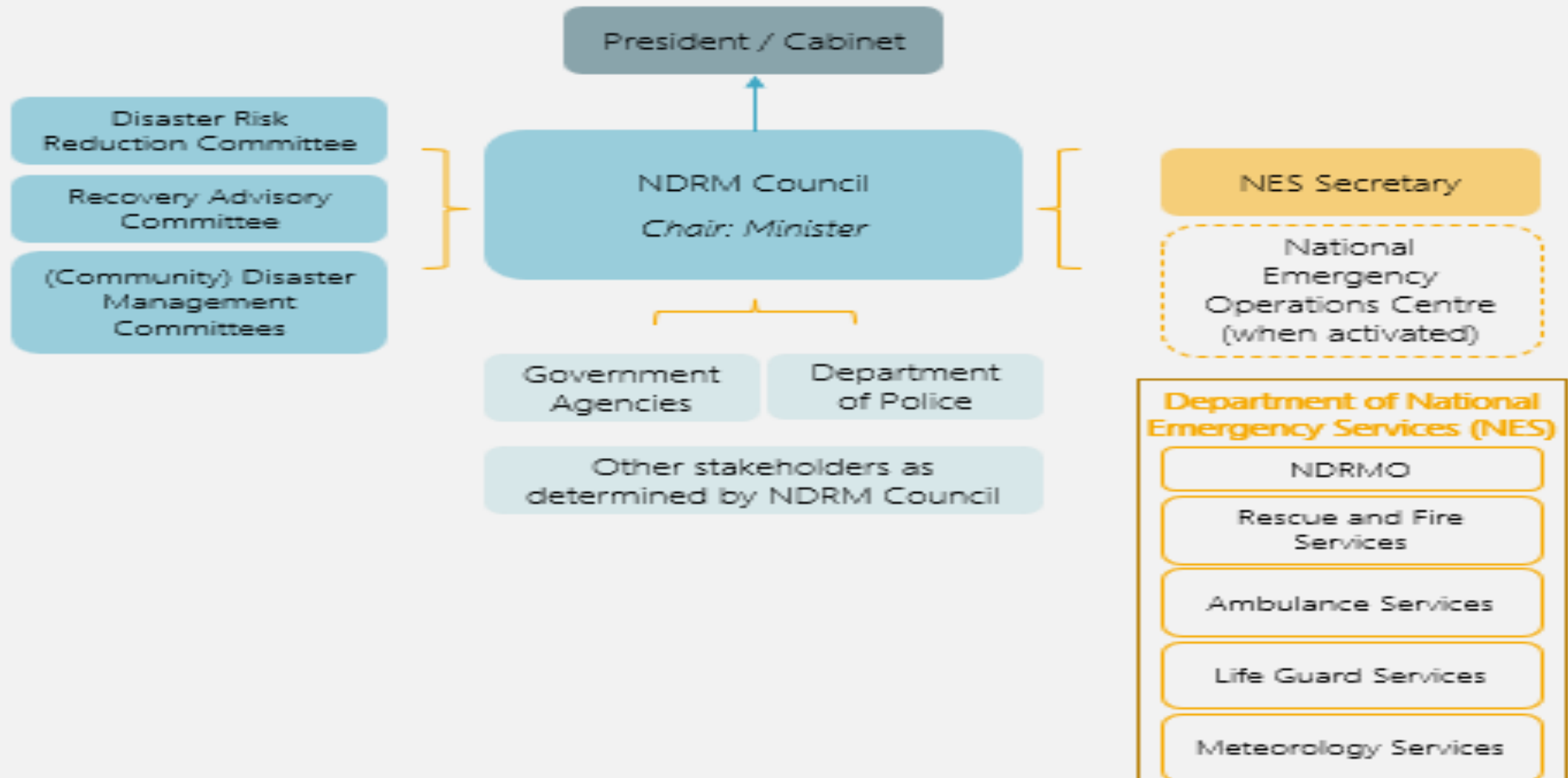


Figure 1 - DRM Governance Structure and Relationships

NDRM ACT 2016



REPUBLIC OF NAURU

NATIONAL DISASTER RISK MANAGEMENT ACT 2016

No. 2 of 2017

An Act to repeal the *National Disaster Risk Management Act 2008* and replace it with a new law that provides for matters relating to disaster risk management in Nauru; to establish under law the National Emergency Services, the national disaster risk committee, and the National Disaster Risk Management Council and for other related purposes

Certified: 26th January 2017

- ▶ S 34 Powers
- ▶ SS (1) An authorised officer may do any of the following:
 - (a) Control the movement of person, animals or vehicles within, into, out of or around any particular areas;
 - (f) remove or destroy any animal, vegetation or substance within a particular area;
 - (g) remove, dismantle, demolish or destroy a vehicle, or a building or a structure in a particular area;
- ▶ SS (2) An authorized officer may enter any building or property without a warrant or the consent of the owner if exercising his or her powers under this Act.
- ▶ SS (3) In the exercise of his or her powers under this Act, an authorized officer may use reasonable force against any person.

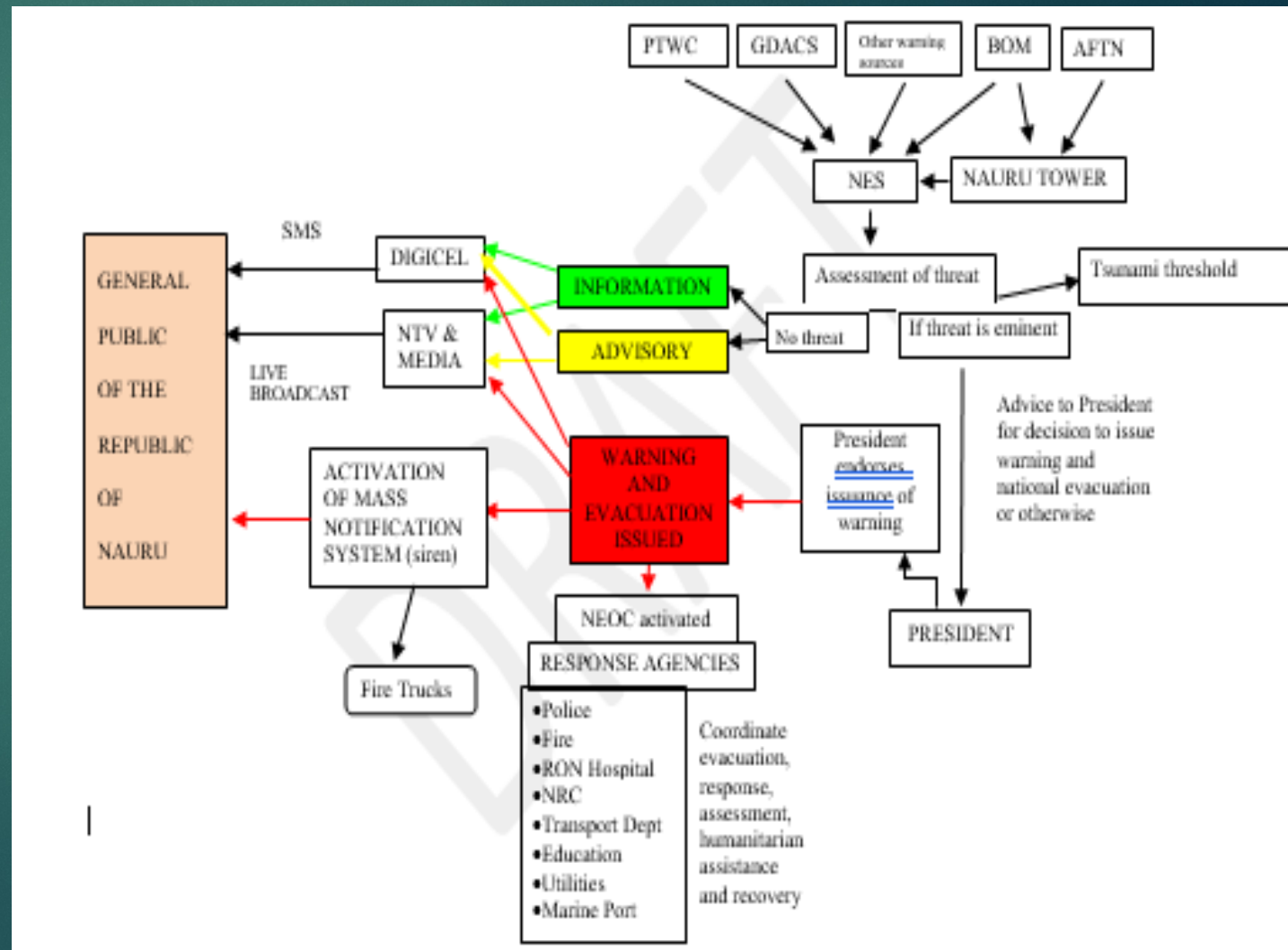
NATIONAL TSUNAMI PLAN (Draft)

- ▶ The National Tsunami Plan has been prepared by the National Disaster Risk Management Council to improve and document the tsunami preparedness, early warning system, response and recovery processes.
- ▶ Tsunami is a fast on set hazard with very little time for the warning hence the developments of the plan to guide the establishment of an effective and efficient early warning people focused end to end system. While Nauru does not face a local tsunami threat, the threat from tele and regional tsunami cannot be ignored since the Republic falls within the Pacific Rim of Fire.
- ▶ The National Tsunami Plan is to be used by all government departments, private sector and community groups as a guide to better prepare them in responding to a tsunami warning being issued to the Republic.



THRESHOLD/ACTIONS - WARNING FLOWCHART

Tsunami Information Statement	Magnitude of 6.5-6.9 < 100 km depth			2 hours	INFORMATION *Issue Tsunami Information Bulletin * Monitor subsequent PTWC messages
Tsunami Threat Message	Magnitude 7.0 or greater, undersea or very near the sea, and < 100 km depth	< 0.3 m	None	2 hours	INFORMATION *Issue Tsunami Information Bulletin * Monitor subsequent PTWC messages
	Magnitude 7.0 or greater, undersea or very near the sea, and < 100 km depth	0.3 to 1 m	Sections of coast with forecast amplitudes 0.3 to 1 m	2 hours	ADVISORY * Issue Tsunami Advisory Bulletin (people to be on stand-by) * Monitor subsequent PTWC messages
	Magnitude 8.0 or greater, undersea or very near the sea, and < 100 km depth	≥ 1 m	Sections of coast with forecast amplitudes ≥ 1 m	2 hours	WARNING *Issue Tsunami Warning Bulletin (people along coasts to evacuate)



EARLY WARNING CENTER METEOROLOGY & HYDROLOGY

TSUNAMI

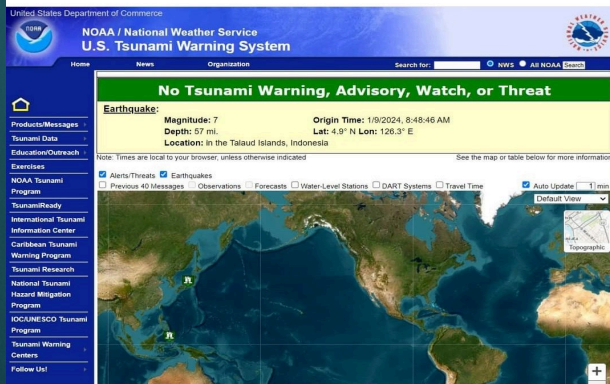
Nauru Meteorological Services 9 Jan · 🌐

TSUNAMI INFORMATION.

Nauru: NO THREAT

An earthquake occurred in the Talaud island, Indonesia, magnitude of 7, depth 57miles. There is no tsunami threat for Nauru.

Sources from: Pacific Tsunami Warning Centre.



SWELL

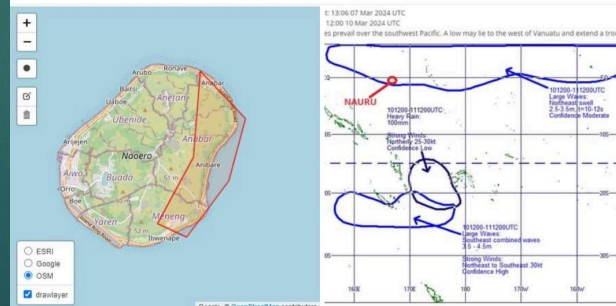
Nauru Meteorological Services 9 Mar · 🌐

WARNING for significant swell is now in force for Nauru.

ETA: 12pm onwards local time
Affected Areas: Anabar, Ijuw, Anibare and Meneng.

Please be advised that this event can cause coastal inundation dependent on windspeed and tide.

Please be aware and refrain from the beaches of the affected areas.



CYCLONE

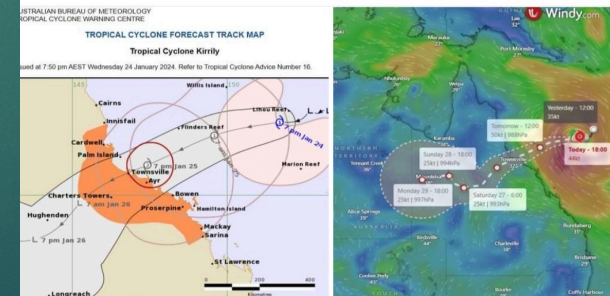
Nauru Meteorological Services 24 Jan · 🌐

TROPICAL CYCLONE INFORMATION,

Tropical Cyclone Kirrily is expected to continue strengthening as it tracks west southwest towards the Queensland coast. The system is likely to cross the Queensland coast Thursday night, in the vicinity of Townsville, as a Category 2 system.

No threat to Nauru,

Source from, Tropical Cyclone Warning Centre.



ACTIVITIES/PLANS FOR PREPAREDNESS

- ▶ Annual drills conducted to all schools
- ▶ Targeted to have them twice a year for each schools
- ▶ Identify and designated assembly areas
- ▶ Debrief and Report
- ▶ Stakeholders included in the drills (securities,police,firies)
- ▶ SOPs to be developed and documented
- ▶ Community outreach drills and awareness
- ▶ Tsunami Evacuation Route Signages
- ▶ Disaster information management systems
- ▶ Tabletop Exercise
- ▶ National tsunami drill

SCHOOLS AVERAGE POPULATION

There are 10 schools around Nauru and 8 of them are all located at the coastal areas of the island.

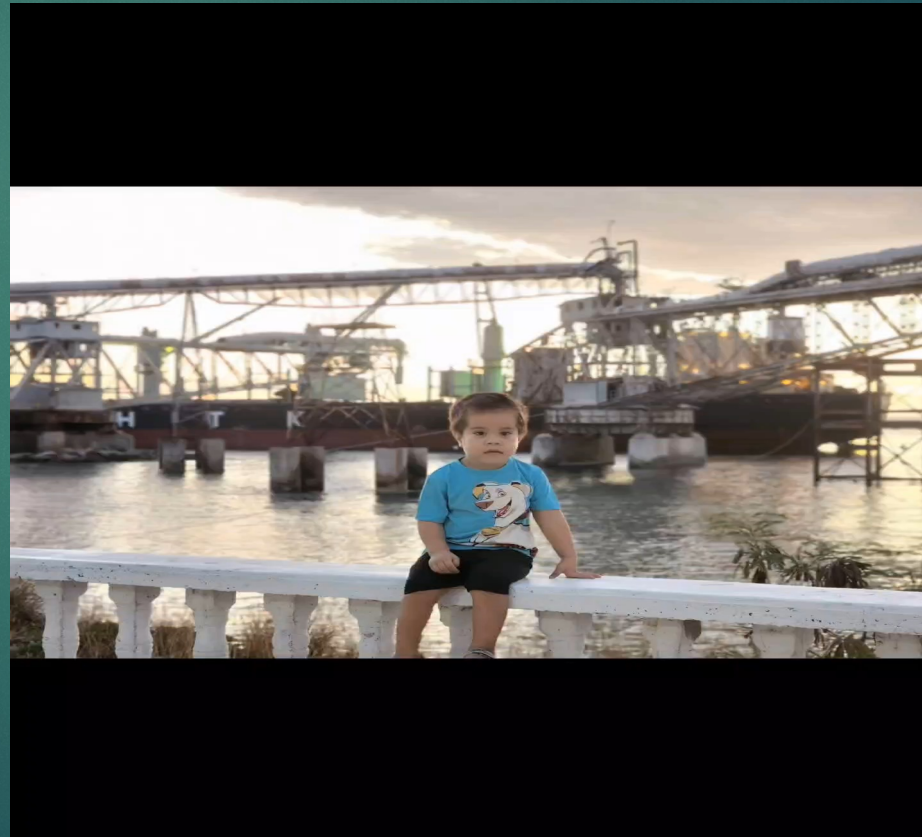
- ▶ Boe Infant School – Students 68, staffs 12
- ▶ Meneng Infant School – students 93, staffs 16
- ▶ Nibok Infant School – students 77, staffs 13
- ▶ Anetan Infant School – Students 88, Staffs 13
- ▶ Nauru College – Students 373, Staffs 32
- ▶ Kayser College – Students 408. Staffs 38
- ▶ Yaren Primary School, TBC
- ▶ Nauru Secondary School, TBC

RECENT ACTIVITIES

UXO



STORM SURGE/HEAVY SWELL



SCHOOLS EVACUATION DRILL



THANK YOU
MUCHAS GRACIAS

