



UNESCO / IOC

INTERNATIONAL TSUNAMI INFORMATION CENTER (ITIC)
ITIC TRAINING PROGRAMME HAWAII (ITP-HAWAII) TSUNAMI EARLY WARNING
SYSTEMS AND THE PACIFIC TSUNAMI WARNING CENTER (PTWC) ENHANCED
PRODUCTS, TSUNAMI EVACUATION PLANNING AND
UNESCO-IOC TSUNAMI READY RECOGNITION PROGRAMME
19-30 August 2024 SHOA, Valparaíso, Chile

TR PREP-1: Making Community-based Evacuation Maps, Routes, and Signage - guidance

Alejandra Gubler (1) and Matías Carvajal (2)

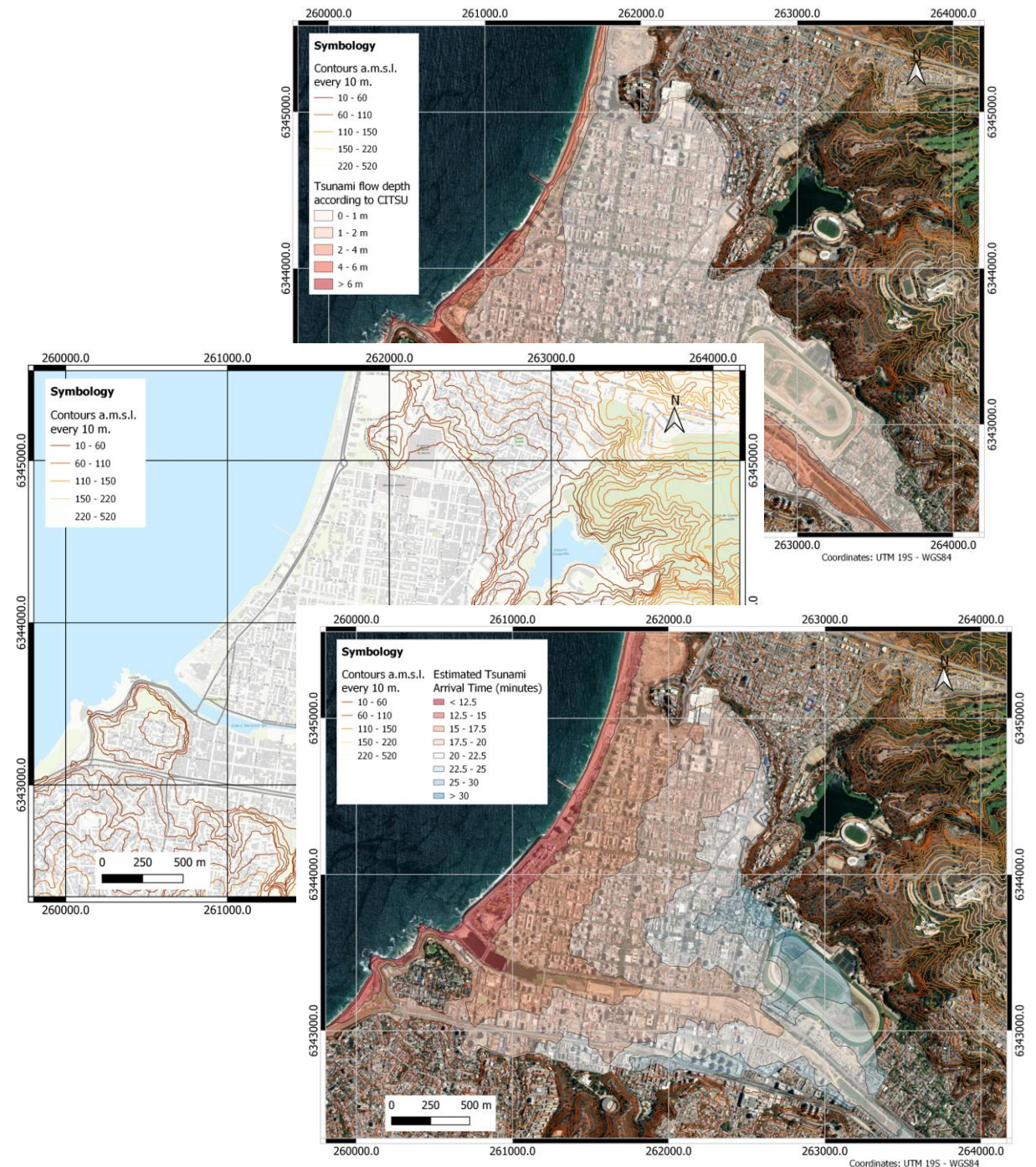
1. *Research Center for Integrated Disasters Risk Management (CIGIDEN)*
2. *Pontificia Universidad Católica de Valparaíso (PUCV)*

Goal

- ❑ For the city of Viña del Mar:
 - ❑ Identify the tsunami Evacuation Zone from given tsunami hazard maps.
 - ❑ Identify the tsunami Security Zone.
 - ❑ Define the evacuation route between starting and meeting points
 - ❑ Estimate the evacuation time from starting to meeting point.
 - ❑ Estimate the time you need to start to evacuate in order to reach the Meeting Point safely.

Required materials

- Maps and files:
 - Tsunami inundation Chart
 - Tsunami arrival time map
 - Topography contour map
- Computer or Laptop
 - Google maps
 - Google Earth Pro
 - (Qgis, Arcgis)



Work groups

□ GROUP 1

- Julio Castro
- Willberth Forero
- Leanka RT Henry
- Diminski Reweru
- Dulce Calan

□ GROUP 2

- Claudia Collao
- Igor Olivares
- Darcy Luuga Naivins Chan-Kum Tong
- Muhammad Harvan
- Hita Zabi Ortiz

□ GROUP 3

- Jaime Corales
- Steven Aguilera
- Linda Tonowane
- Kassia Johnson
- Luis Fernando Alconero

□ GROUP 5

- Carolina Henríquez
- Andres Romero
- Mabiús Francis
- Joji Malodali
- Juritzy Pérez

□ GROUP 4

- Jasna Haro
- Rodrigo Andres Asenjo Paredes
- Denisse Llacuachaqui
- Filimone Qaloyawa Rokoiri
- Christiam Gómez

□ GROUP 6

- Alejandro Marabolí-Quezada
- Francisco Uribe
- Lisi Seumanutafa Uini
- Fabian Hinds
- Grenfel Defoe

□ GROUP 7

- Cesar Nuñez
- Valeria Tapia
- Mohammed Ahmed Al Madhani
- David Cruz
- Danielle Jalisa Howell

Exercise tasks

1. Use the maps and files (available in this [shared link](#)) to draw the Security Zone and the Evacuation Zone.
1. From the defined starting points for each group, define a Meeting Point and define your evacuation route to that point.
1. Estimate the evacuation distance from your starting point to your Meeting Point.
1. Estimate the evacuation time from your starting point to your Meeting Point for different walking speeds.
1. Estimate the time you may need to start the evacuation in order to not be caught by the tsunami.
1. Prepare a short presentation (maximum 2 minutes) showing your results.

Exercise tasks



Each group (G) should start at the intersection of Avenida Peru with the following locations:

Group	place/street	Longitude	Latitude
G1	Nogaró Restaurant	-71.5617136	-33.0188954
G2	Casino	-71.5610876	-33.0182366
G3	Bonafide Café	-71.5605516	-33.0177799
G4	5 Norte	-71.5597452	-33.0171499
G5	6 Norte	-71.5586777	-33.0161824
G6	7 Norte	-71.5574995	-33.0153377
G7	8 Norte	-71.5565097	-33.0144224



UNESCO / IOC
INTERNATIONAL TSUNAMI INFORMATION CENTER (ITIC)
ITIC TRAINING PROGRAMME HAWAII (ITP-HAWAII) TSUNAMI EARLY WARNING
SYSTEMS AND THE PACIFIC TSUNAMI WARNING CENTER (PTWC) ENHANCED
PRODUCTS, TSUNAMI EVACUATION PLANNING AND
UNESCO-IOC TSUNAMI READY RECOGNITION PROGRAMME
19-30 August 2024 SHOA, Valparaíso, Chile

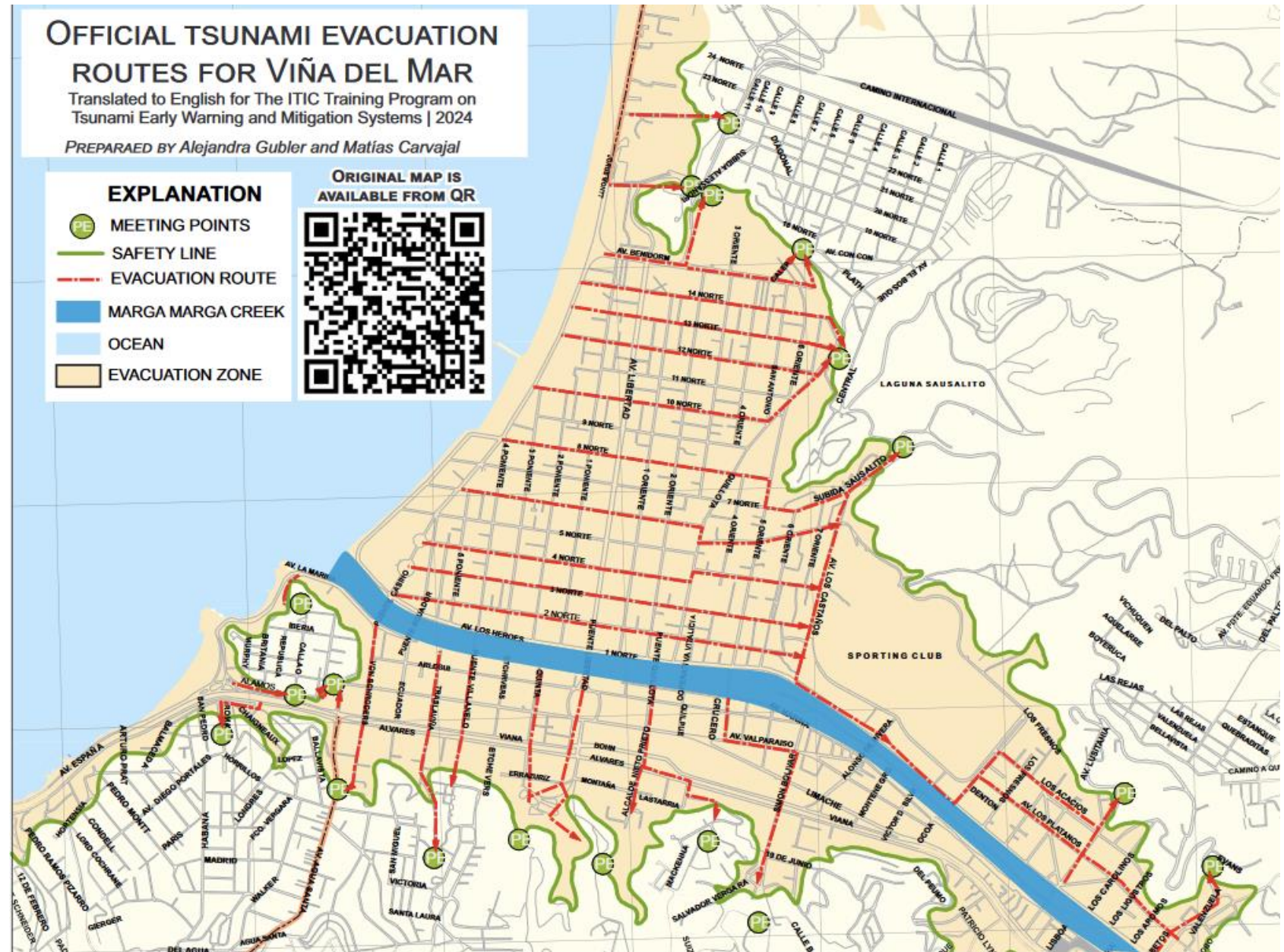
Did you escape the wave? Evacuation Drill, City of Viña Del Mar

Matías Carvajal (1), Alejandra Gubler (2)

1. *Pontificia Universidad Católica de Valparaíso (PUCV)*
2. *Research Center for Integrated Disasters Risk Management (CIGIDEN)*

Goal

Assess the effectiveness and practicality of Viña del Mar's official evacuation routes



Required materials

- ❑ Mobile App installed in your smartphone (both are free)

- ❑ For Iphone:



myTracks - The
GPS-Logger
Dirk Stichling

- ❑ For Android:



Geo Tracker - GPS tracker

Ilya Bogdanovich Voyages et Infos locales ★ 1

■ PEGI 3

Propose des achats dans l'application

● Cette application est compatible avec l'ensemble de vos ap

- ❑ Official tsunami evacuation map for Viña del Mar

Work groups (same as previous activity)

□ GROUP 1

- Julio Castro
- Willberth Forero
- Leanka RT Henry
- Diminski Reweru
- Dulce Calan

□ GROUP 2

- Claudia Collao
- Igor Olivares
- Darcy Luuga Naivins Chan-Kum Tong
- Muhammad Harvan
- Hita Zabi Ortiz

□ GROUP 3

- Jaime Corales
- Steven Aguilera
- Linda Tonowane
- Kassia Johnson
- Luis Fernando Alconero

□ GROUP 5

- Carolina Henríquez
- Andres Romero
- Mabiús Francis
- Joji Malodali
- Juritzy Pérez

□ GROUP 4

- Jasna Haro
- Rodrigo Andres Asenjo Paredes
- Denisse Llacuachaqui
- Filimone Qaloyawa Rokoiri
- Christiam Gómez

□ GROUP 6

- Alejandro Marabolí-Quezada
- Francisco Uribe
- Lisi Seumanutafa Uini
- Fabian Hinds
- Grenfel Defoe

□ GROUP 7







- Cesar Nuñez
- Valeria Tapia
- Mohammed Ahmed Al Madhani
- David Cruz
- Danielle Jalisa Howell

OFFICIAL TSUNAMI EVACUATION ROUTES FOR VIÑA DEL MAR

Translated to English for The ITIC Training Program on Tsunami Early Warning and Mitigation Systems | 2024

PREPARAED BY Alejandra Gubler and Matías Carvajal

EXPLANATION

-  MEETING POINTS
-  SAFETY LINE
-  EVACUATION ROUTE
-  MARGA MARGA CREEK
-  OCEAN
-  EVACUATION ZONE

ORIGINAL MAP IS AVAILABLE FROM QR



Each group (G) should start at the intersection of Avenida Peru with the following locations:

G1: Nogaró Restaurant

G2: Casino

G3: Bonafide Café

G4: 5 norte street

G5: 6 norte street

G6: 7 norte street

G7: 8 norte street

Group	place/street	Longitude	Latitude
G1	Nogaró Restaurant	-71.5617136	-33.0188954
G2	Casino	-71.5610876	-33.0182366
G3	Bonafide Café	-71.5605516	-33.0177799
G4	5 Norte	-71.5597452	-33.0171499
G5	6 Norte	-71.5586777	-33.0161824
G6	7 Norte	-71.5574995	-33.0153377
G7	8 Norte	-71.5565097	-33.0144224

Exercise tasks

1. Each group has to go to their assigned starting point

Make sure you:

- Know how the mobile App works before going to your starting point.

1. Once there, walk as a group to your meeting point following the official evacuation route:

Make sure you:

- Start recording your route with the mobile App before leaving your starting point.
- Follow the route indicated in the map, which might be different than what the official signs indicate.
- On your printed map, mark the locations of any signs you encounter. Additionally, take note of any situations you consider positive or negative regarding the evacuation route
- Stop and save the recording once you reach the meeting point.
- Upload your .GPX file in the this [shared folder](#), naming the file as **GX_lastname_firstname**