

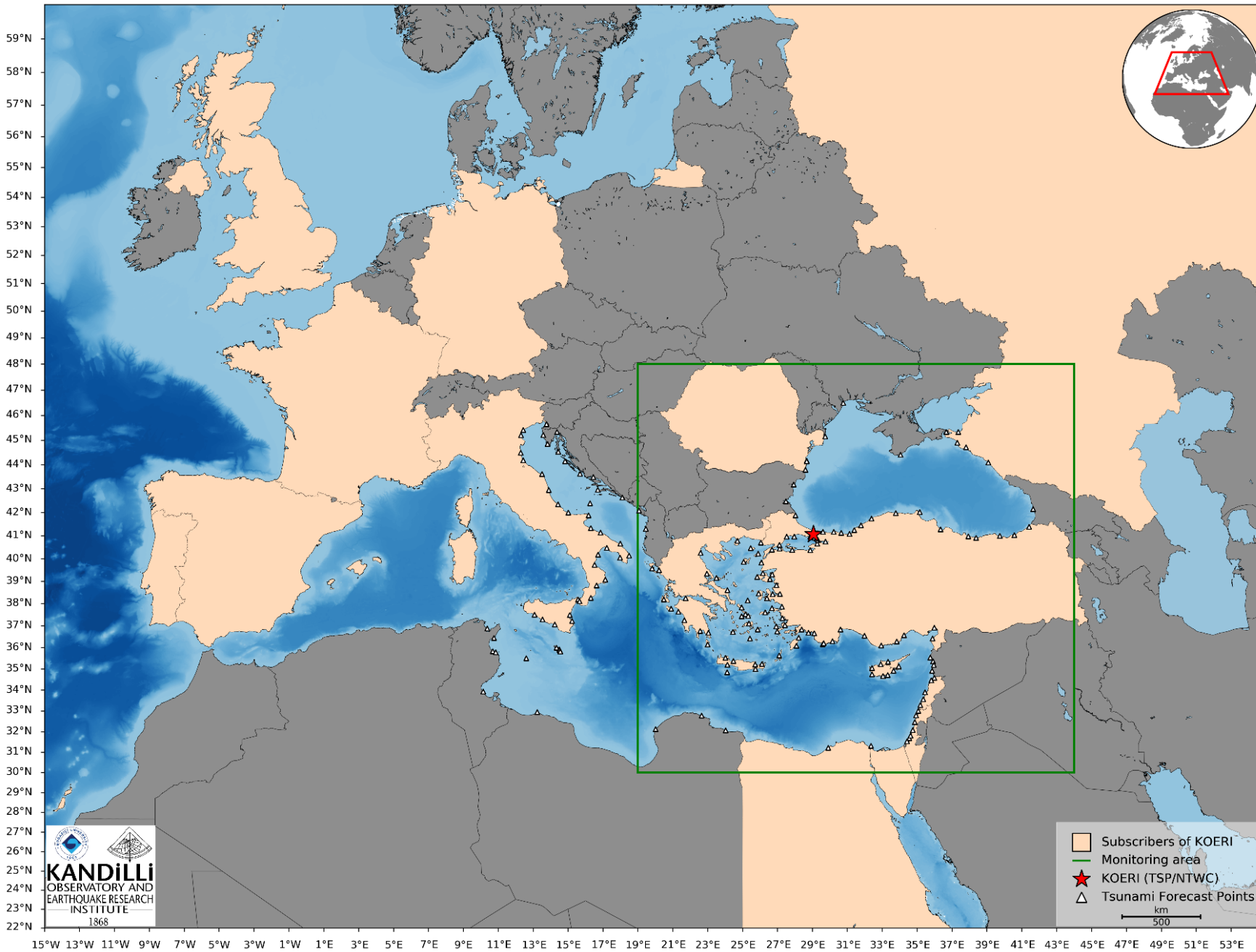


**Boğaziçi University**  
**Kandilli Observatory and Earthquake Research Institute**  
**Regional Earthquake-Tsunami Monitoring Center**



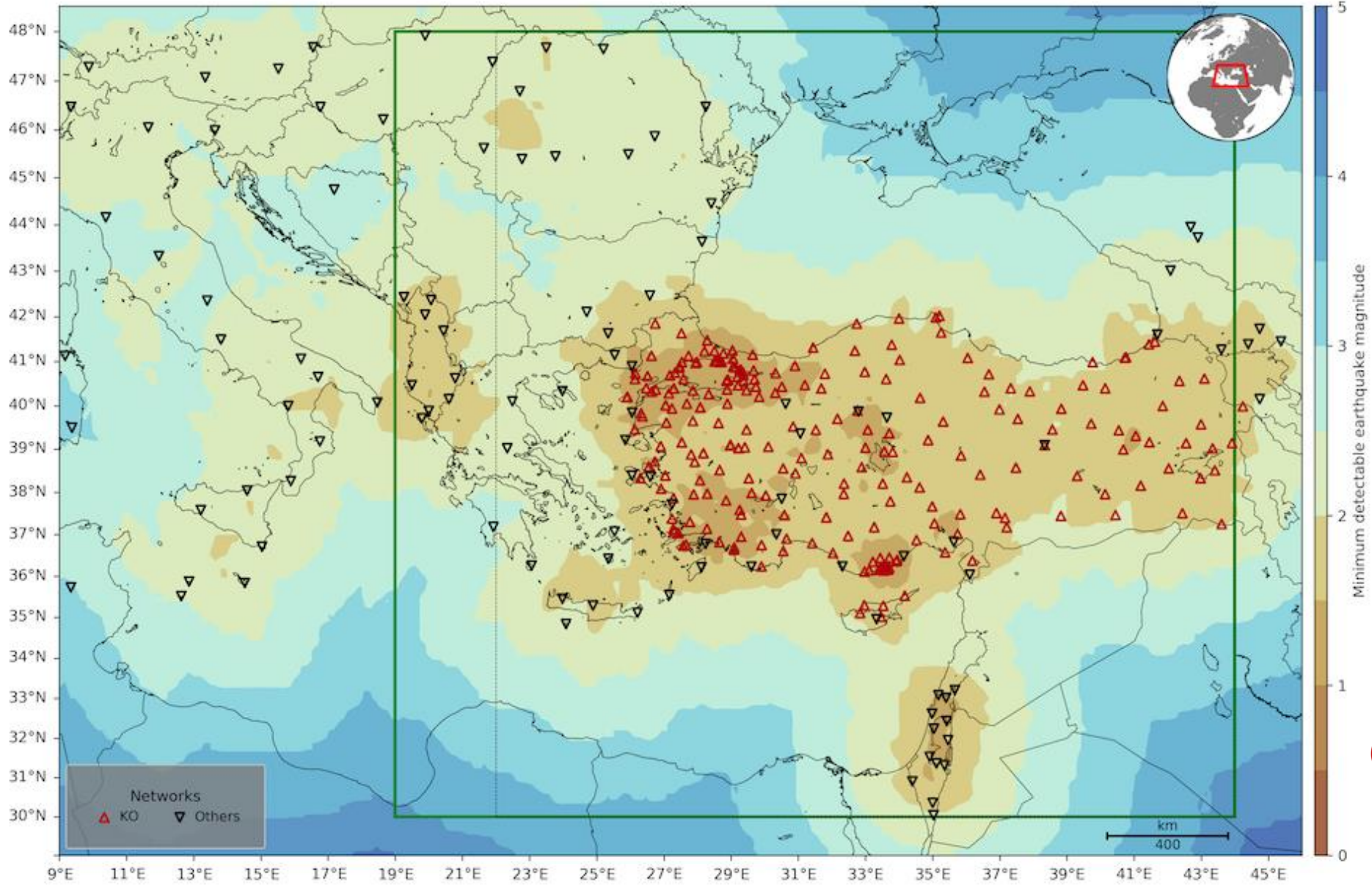
**TSP/NTWC**  
**KOERI - TÜRKİYE**

**ICG/NEAMTWS XIX Session**  
**27-29 November 2024**  
**Paris, France**



**Monitoring Area:**  
**30.00 -48.00N**  
**19.00- 44.00E**

**Subscribers:**  
**13 MS, 21 Agencies/Institutes**  
**Including;**  
**AFAD, Muğla MM, Istanbul MM, TRNC**



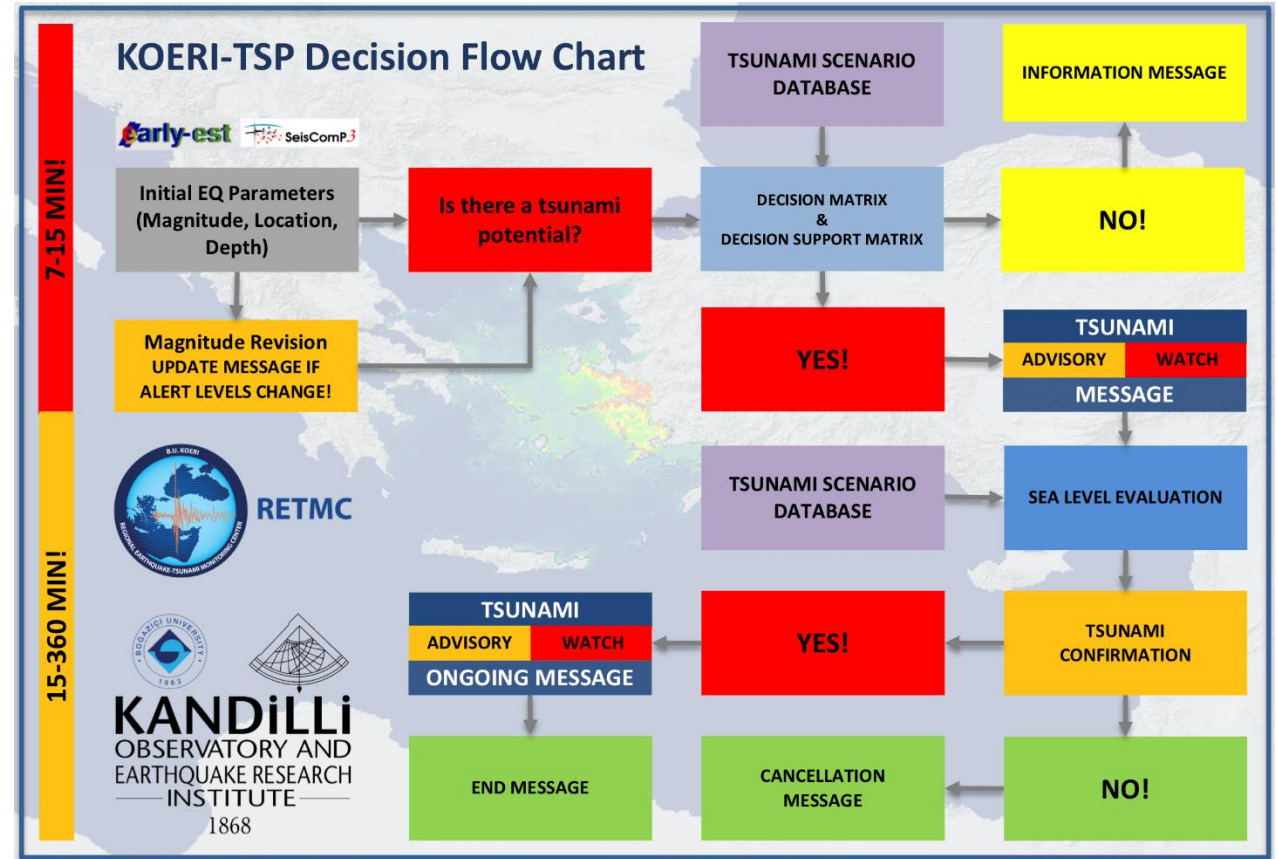
***Seismic Sensors:  
299 (BB+SP+SM)  
(163 vel+136 acc)***

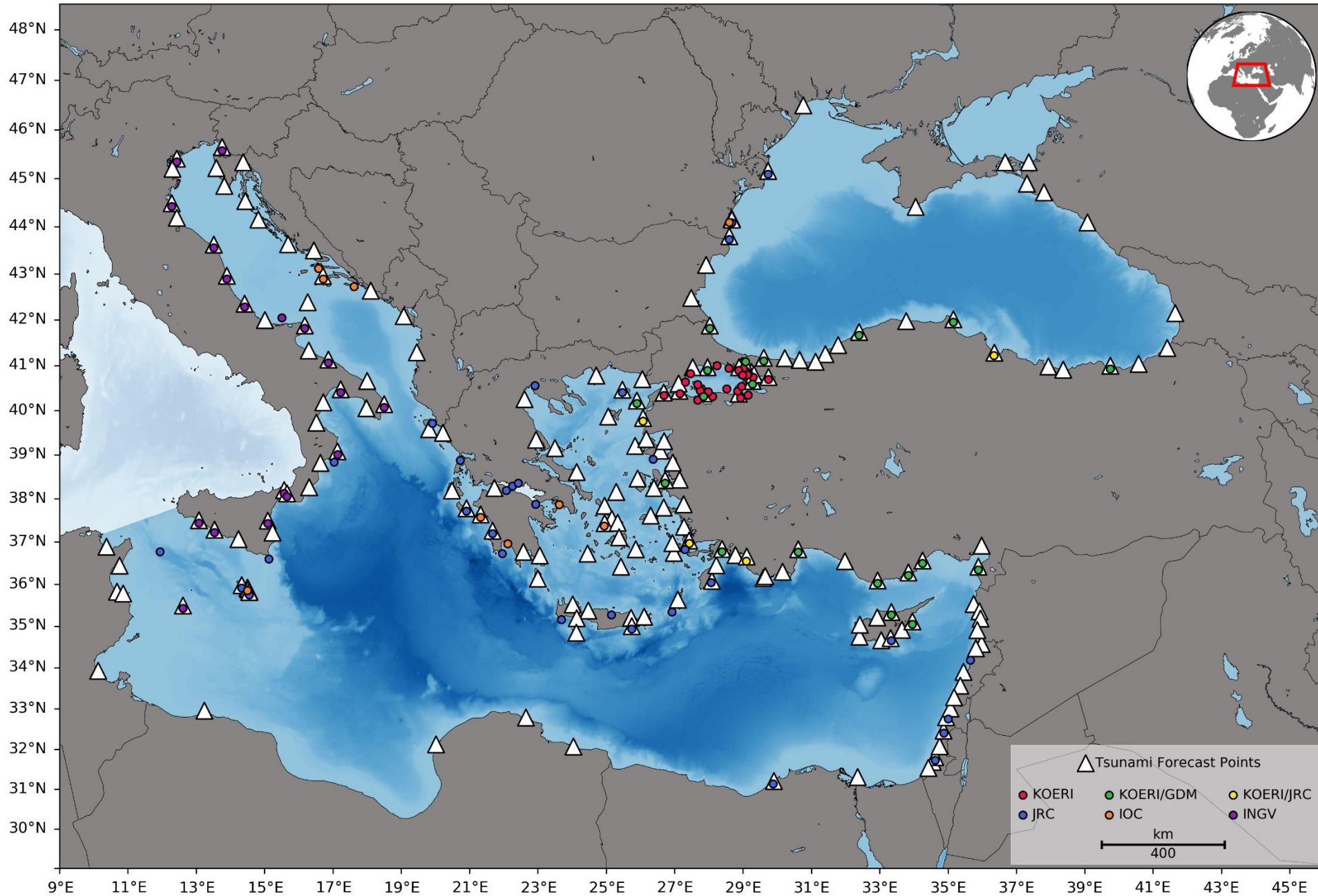
***(Including the sensors that will be  
installed at the end of 2024)***

TSP-TR (KOERI)						
Decision Matrix for the Eastern Mediterranean, Aegean and Black Seas						
Depth	Epicentre Location	Earthquake Magnitude	Tsunami Potential	Type of Tsunami Message		
				Local < 100 km	Regional ≥100 - ≤400 km	Basin-wide > 400 km
< 100 km	Offshore or close to the coast (≤ 40 km inland)	5.5 ≤ Mw or mb ≤ 5.9	Low tsunami potential	Information	Information	Information
		6.0 ≤ Mw ≤ 6.4	Tsunami potential	Advisory	Information	Information
	Offshore or close to the coast (≤ 100 km inland)	6.5 ≤ Mw ≤ 6.9	Potential for a destructive tsunami	Watch	Advisory	Information
		7.0 ≤ Mw or Mw <sub>pd</sub> ≤ 7.4	Potential for a destructive tsunami	Watch	Watch	Advisory
		Mw <sub>pd</sub> ≥ 7.5	Potential for a destructive tsunami	Watch	Watch	Watch
Inland (>40km and < 100km)	6.0 ≤ Mw ≤ 6.4	Low tsunami potential	Information	Information	Information	
≥ 100 km	Offshore or inland (≤ 100 km)	Mw ≥ 5.5	Low tsunami potential	Information	Information	Information

NEAMTWS Decision Support Matrix		
Alert Level	Advisory	Watch
Wave Amplitude	0.2-0.5 m	> 0.5 m
Run-up	< 1m	> 1 m
Impact	Current, bore, damage in water possible minor inundation in beaches	Watch impact + inundation of the low-lying coastal land



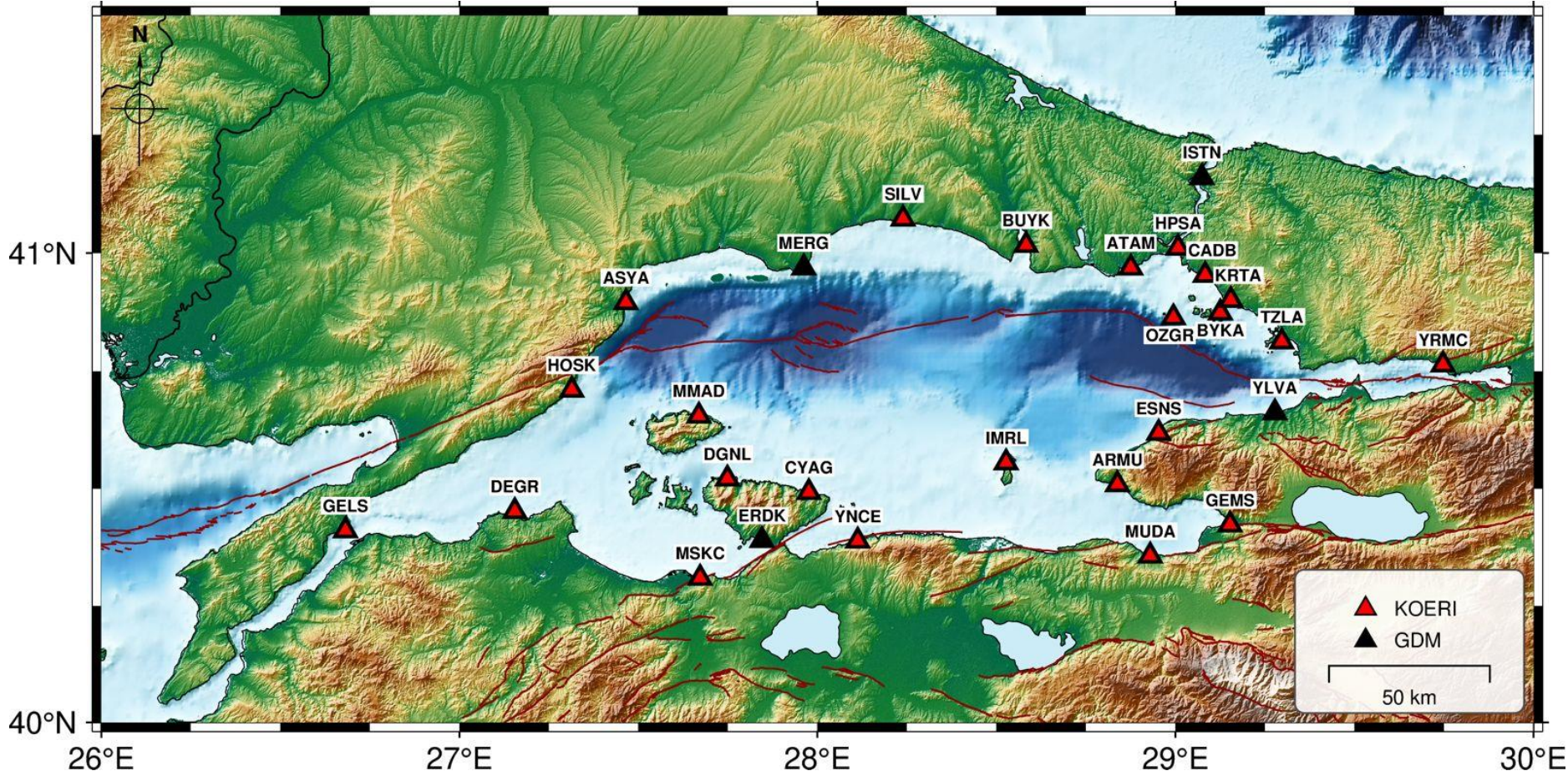


**Sea Level Stations:**

**44 Sea level Stations  
(20 GDM+24 KOERI)**

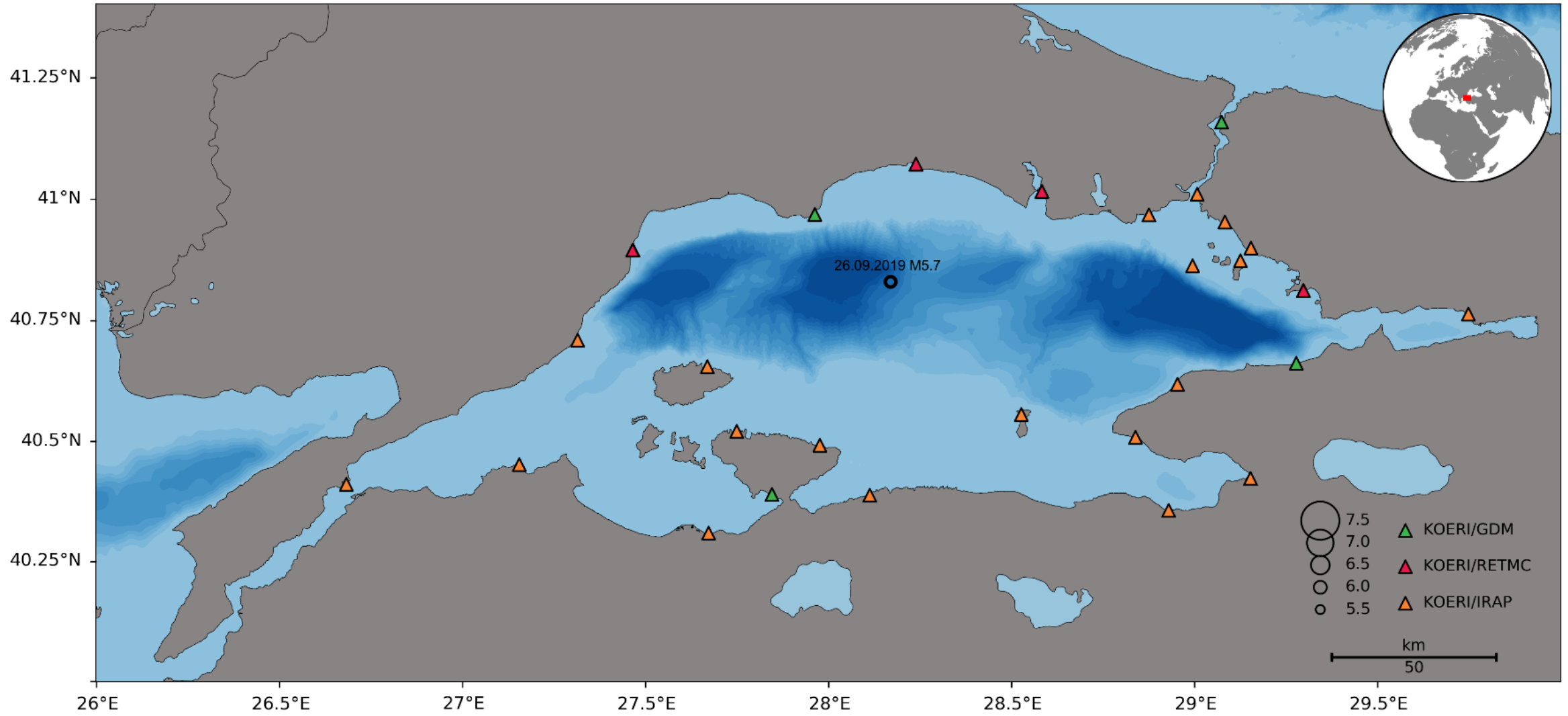
**4 (JRC-KOERI) IDSL (CLOSED)**

***New Sea Level Stations:  
20 (Multidisciplinary  
sea level stations)  
(Including mareograph,  
meteorological sensors, SM)  
in the frame of Provincial  
Disaster Risk Mitigation plan  
for Istanbul***

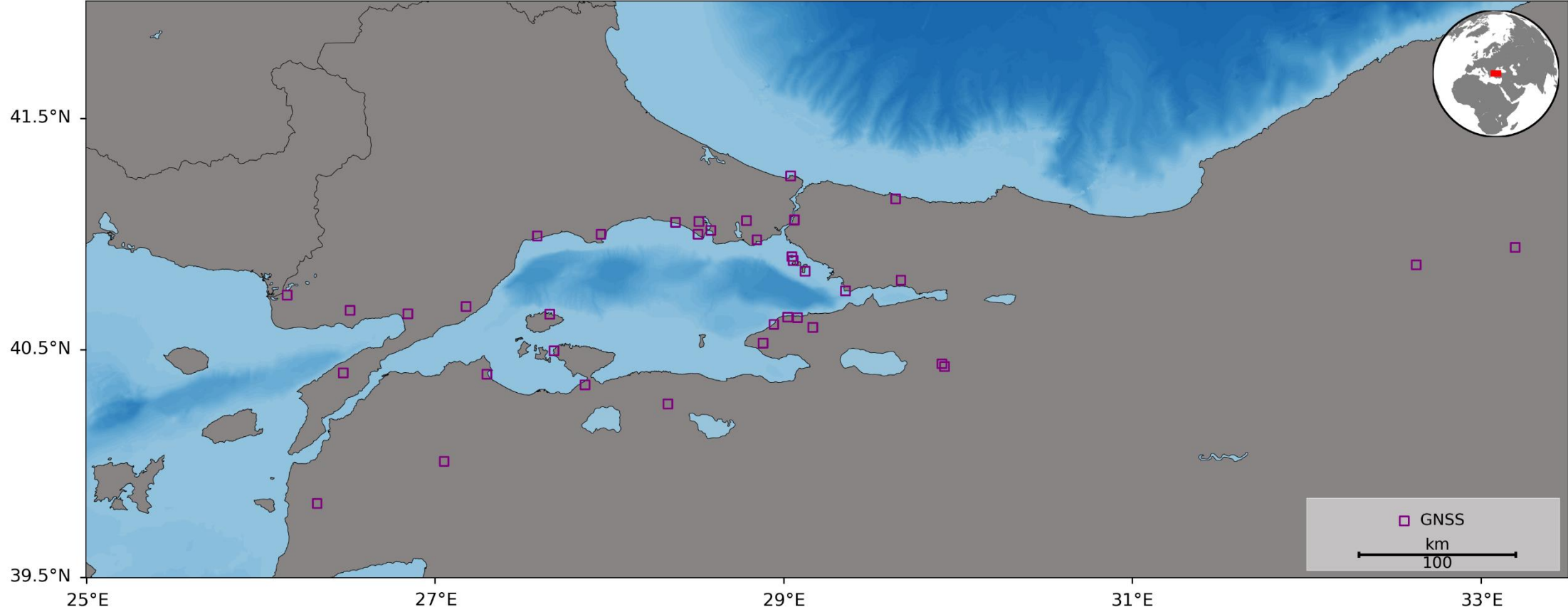


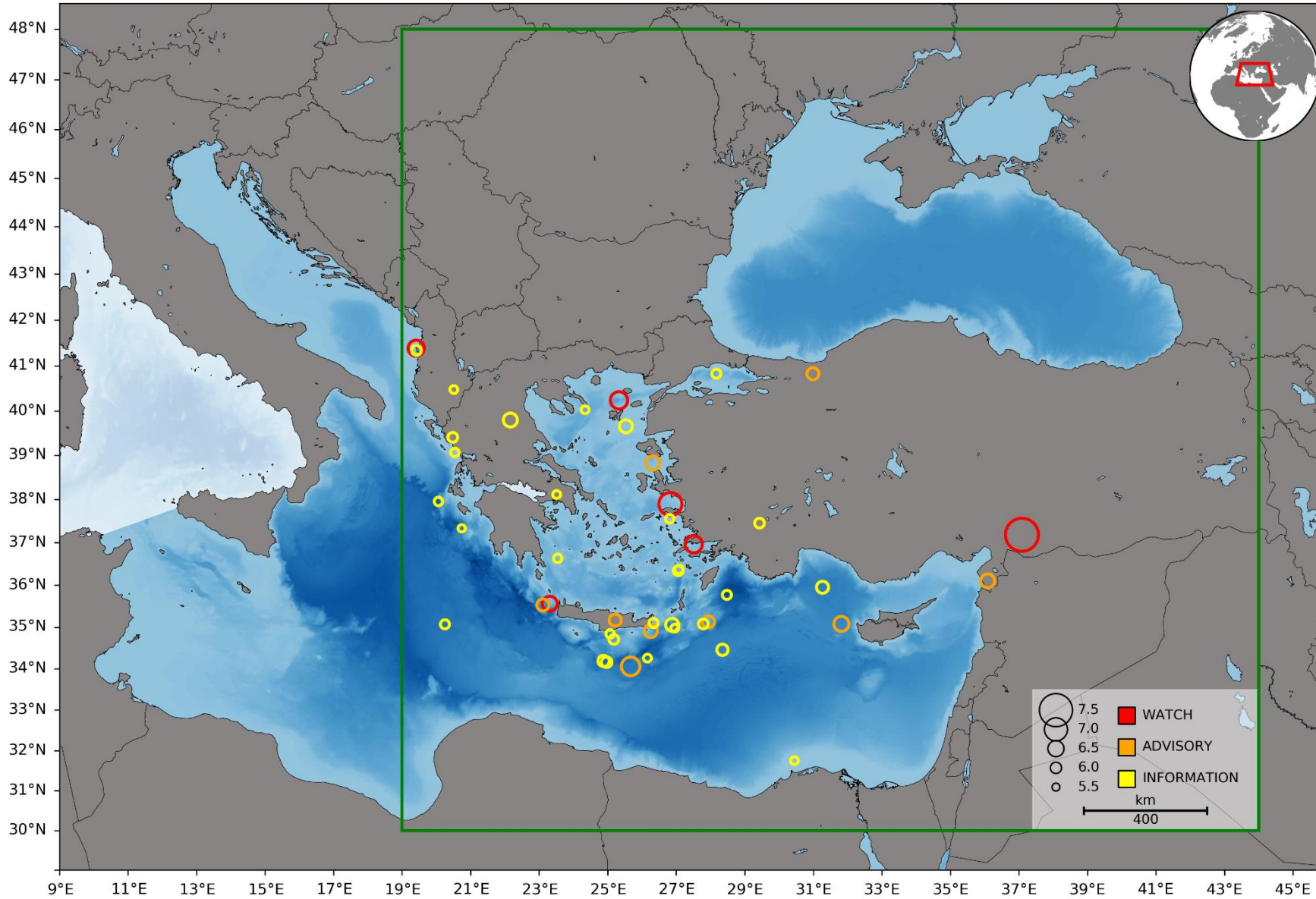


*Multidisciplinary sea level monitoring stations around Marmara Sea*









***Tsunami Messages:  
46 (31 information,  
9 advisory,  
6 watch)***

***as of July 2012***

Message Dissemination:

46 Tsunami (6 Watch, 9 Advisory, 31 Information) Message disseminated as off 01 July 2012.

<u>DATE</u>	<u>TIME</u>	<u>LOCATION</u>	<u>LATT</u>	<u>LONG</u>	<u>DEPTH</u>	<u>MAGNITUDE</u>	<u>ALERT LEVEL</u>
29.03.2024	07:12	Southern Greece	37.32	21.18	20	5.8 Mwp	INFORMATION

*as of previous ICG/NEAMTWS, 6-8 February 2024*

## Regular Communication Tests

- Daily Tsunami exercises;  
Three times in a day
- Monthly Tsunami exercises;  
Monday - - > as NTWC with National CPA  
Tuesday - - > as TSP with International Subscribers
- NEAMWAVE Tsunami Exercises



NEAM TSUNAMI SERVICE PROVIDER  
KOERI (TÜRKİYE)

REGULAR COMMUNICATION TEST EXERCISE  
EVALUATION FORM

didemsamut@gmail.com [Hesap değiştir](#)

Paylaşılmıyor

\* Zorunlu soruyu belirtir

  
KANDILLI  
OBSERVATORY AND  
EARTHQUAKE RESEARCH  
INSTITUTE  
1868

MESSAGE SENDER \*

TWFP\_TR

MESSAGE DATE AND TIME \*

Please select the correct date and time which is written at the messages header

Tarih Saat

gg.aa.yyyy  :

MEMBER STATE OF MESSAGE RECEIVER \*

Yanıtınız \_\_\_\_\_

ORGANIZATION NAME OF MESSAGE RECEIVER \*

Yanıtınız \_\_\_\_\_

## PROJECTS & COLLABORATIONS & ENGAGEMENTS

# Strengthening the Resilience of Coastal Communities in the North East Atlantic, Mediterranean Region to the Impact of Tsunamis and Other Sea Level-Related Coastal Hazards

## COASTWAVE

### Special Thanks!



TÜRKİYE CUMHURİYETİ  
BÜYÜKÇEKMECE KAYMAKAMLIĞI

# Tsunami Ready Recognition Programme - Büyükçekmece İstanbul Türkiye Certification Ceremony in İstanbul, 15 March 2024



# COASTWAVE PROJECT



COASTWAVE: 2021-2024  
COASTWAVE PHASE II: 2024 -- >



# 2024 OCEAN DECADE CONFERENCE



## Coastal Cities and Communities Joining Tsunami Ready



(KOERI & AFAD) TÜRKİYE



## PROJECTS & COLLABORATIONS & ENGAGEMENTS

### ARISTOTLE-eENHSP Project

enhanced European Natural Hazard Scientific Partnership



ARISTOTLE: 2016-2018

ARISTOTLE - ENHSP: 2018-2020

ARISTOTLE - eENHSP: 2020-2024

ARISTOTLE IV: 2024 - - >

### Partners



## Thematic Core Services

Home



### Seismology

The TCS Seismology builds on existing coordinated European seismological infrastructures - ORFEUS, EMSC, EFEHR - and associated datacenters to provide services for seismic waveform data, seismological products, and seismic hazard and risk information, and integrates these within the EPOS architecture.



### Near-Fault Observatories

The Near Fault Observatories (NFO) are long term research infrastructures striving to provide such multidisciplinary and high resolution near fault data and products.



### Tsunami

The Thematic Core Service (TCS) Tsunami coordinates within the EPOS infrastructure the provision of various tsunami-related services, such as data (e.g., sea level, historical, submarine landslides), instrument information, tsunami information products, numerical models, and hazard and risk products in Europe.



### GNSS Data and Products

The TCS GNSS Data and Products provides access to data, metadata, scientific products and services, through the EPOS infrastructure, to foster research on geodesy and solid Earth science.



### Geomagnetic Observations

The TCS Geomagnetic Observations consolidates data and services provided by the geodetic community and creates new services for magnetotelluric data and geomagnetic models.



*Global Tsunami Model Association is founded 26.09.2024*



*EPOS ON Kick off Meeting 3-4 October, 2024*



*Tsunami Warning Workshop @Stromboli,  
Observation, Modeling, Hazard ,Forecasting, 5-8 October, 2024*



# NTWC KOERI



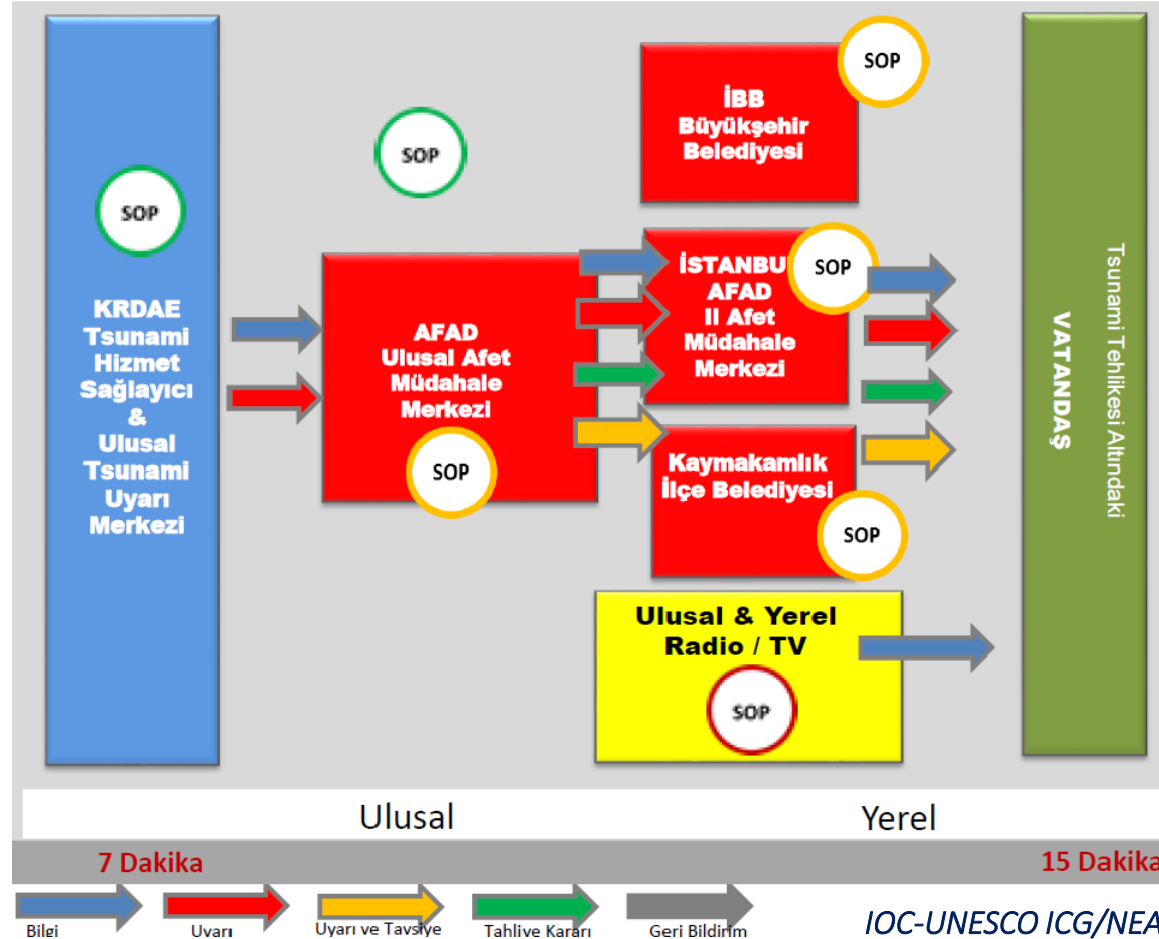
## 5 November Word Tsunami Awareness Day

***KOERI SOP WORKSHOP  
& Marmara Sea Coastal Municipalities***

**KOERI (TSP/NTWC TÜRKİYE)  
Istanbul Metropolitan Municipality  
Istanbul AFAD  
Gebze Technical University  
17 Coastal Municipalities in Marmara  
Turkish Wireless and Radio Amateur  
Society (TRAC)**



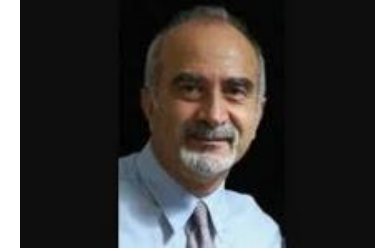
# NTWC KOERI



## **Administrative Changes:**

### **KOERI Director :**

*Prof Dr. Haluk Özener - - > Prof . Dr. Nurcan Meral Özel*



**1959-2024**

### **REPMC Director:**

*Assoc. Dr. Doğan Kalafat - - > Prof . Dr. Nurcan Meral Özel*



**REMINDER:** *Transition of Bogazici University E-MAIL EXTENSION from  
@boun.edu.tr - - - > @bogazici.edu.tr*

**Thank You...**