

Tsunami Ready Philippines National Workshop
8-11 December 2025, Park Inn by Radisson North EDAS

Outreach, Public Awareness, Education

Philippine Context

CHARMAINE V. VILLAMIL

Lic. Geologist and Senior Science Research Specialist



DOST-PHIVOLCS

	TSUNAMI READY INDICATORS
I	ASSESSMENT (ASSESS)
1	ASSESS-1. Tsunami hazard zones are mapped and designated.
2	ASSESS-2. The number of people at risk in the tsunami hazard zone is estimated.
3	ASSESS-3. Economic, infrastructural, political, and social resources are identified.
II	PREPAREDNESS (PREP)
4	PREP-1. Easily understood tsunami evacuation maps are approved.
5	PREP-2. Tsunami information including signage is publicly displayed.
6	PREP-3. Outreach and public awareness and education resources are available and distributed.
7	PREP-4. Outreach or educational activities are held at least 3 times a year.
8	PREP-5: A community tsunami exercise is conducted at least every two years.
III	RESPONSE (RESP)
9	RESP-1. A community tsunami emergency response plan is approved.
10	RESP-2. The capacity to manage emergency response operations during a tsunami is in place.
11	RESP-3. Redundant and reliable means to timely receive 24-hour official tsunami alerts are in place.
12	RESP-4. Redundant and reliable means to timely disseminate 24-hour official tsunami alerts to the public are in place.

} **Indicators 6 -7**

6: Outreach and public awareness and education resources are available and distributed

GOVPH

Home

Transparency

Volcano

Earthquake

Tsunami

Landslide

Services

News

Contact Us




Search ...


Department of Science and Technology

PHIVOLCS

Philippine Institute of Volcanology and Seismology

Philippine Standard Time:
Wednesday, December 10, 2025, 5:22:59 AM





DOST-PHIVOLCS

WORLD TSUNAMI AWARENESS

5 NOVEMBER

Shake, Drop, or Roar? Move!

Services

News

Contact Us

Search ...

Hazard Information and Assessment Services

Earthquake External Service Requests

Volcano External Service Requests

Information Products & Services

Publications

Information Tools

General Information Products

Special Reports

Open-file Reports

Books

Annual Reports

Infographics

Volcano Information Materials

MMEIRS and Risk Analysis Project Reports

News Releases

PRESS RELEASE: TSUNAMI READY PHILIPPINES NATIONAL VOLCANIC AND COASTAL COMMUNITIES' TSUNAMI PREPAREDNESS

The Department of Science and Technology – Philippine Institute of Volcanology and Seismology is part of an international collaborative effort to enhance community preparedness and

CONTINUE READING »

Volcano Information Materials

Earthquake Information Materials

Tsunami Information Materials

Comics – Haydee Kaiyama Bagong Pag-asa 2013

Comics – Haydee Kaiyama Renewed Hope July 2015

Comics – Imelda Suzuki Daang Mapanganib 2013

Comics – Imelda Suzuki The Dangerous Road July 2015

Comics – Lorna Kikuta Ang Huling Sayonara 2013

Comics – Lorna Kikuta My Last Sayonara July 2015

Comics – Marivel Gunji A Perilous Time July 2015

Comics – Marivel Gunji Oras Ng Peligro 2013

Flyer – Developing A Tsunami Prepared Community

Flyer – Philippine Tsunami Information

Flyer – Tsunami English Version

Flyer – Tsunami Filipino version

Flyer – Tsunami Primer

Hazard Map Tsunami Prone Areas


Pocketsize -Tsunami

Poster – How to Conduct Tsunami drill 2012

Poster – Tsunami Bicolano 2007

Poster – Tsunami Cebuano 2007


www.phivolcs.dost.gov.ph



DOST-PHIVOLCS

6: Outreach and public awareness and education resources

KAHANDAAN AT KALIGTASAN KUNG MAY TSUNAMI



Huwag manatili sa mabababang lugar na malapit sa dagat pagkatapos ng isang malakas na lindol. Agad magtungo sa ligtas na mataas na lugar.

Kung makapansin ng kakaba sa dagat tulad ng biglaang pagbagsa ng tubig, kaagad lumikas patungo sa mataas na lugar.

Huwag bumaba sa dalampasigan upang panorin ang tsunami. Kapag abot tanaw mo na ang mga alon, labis ka nang malapit upang maiwasan pa ito.

Lumayo sa magsanay na lugar hangga't hindi naglalabas ng hudyat na "tigas na" o "all clear" mula sa mga kinatawagan.

Magsagawa ng mga pahatid kaalaman sa mga panayanan tungkol sa lindol at tsunami na tumutukoy sa mga likas na palatandaan ng paparating na tsunami, gayundin ang pagbibigay babala at parang na paglikas.

Alamin ang mataas na lugar sa inyong paligid at palin ang mga listag na dami patungo doon.

Magkabit ng mga karatigang babala at paalala.

PHILIPPINE INSTITUTE OF VOLCANOLOGY AND SEISMOLOGY
 PHIVOLCS Bldg., C.P. Garcia Ave., U.P. Campus, Diliman, Quezon City, Philippines
 Tel. Nos. 9277300, 9274242, 9260011, 4091400 to 79
 PHIVOLCS Website: www.phivolcs.dost.gov.ph
 Facebook: @phivolcs_dost
 Twitter: @phivolcs_dost
 September 2007

TSUNAMI 'CEBUANO'

Ang TSUNAMI usa ka sunod-sunod nga dagkong balod sa dagat nga nahibalo gumikan sa pagtay-ag sa yuta ilalum sa dagat, kang kansang gitas-on muabot ngadto sa sobra sa 5 ka metro. Kaniunay kini nga masaypan nga 'tidal waves' ug usahay matud pa, tungod sa makusog nga bagyo ('storm surge'). Ang tsunami mahimong mahitabo kung ang giliganan sa lino magabaw ug adunay igong kusog nga makabuak sa yuta sa ilalum sa dagat ug makapalinhok sa kinatibuk-ang tubig sa libaw na lino.

MAHIMONG PAGPANGANDAM UG PAGLIKAY SA TSUNAMI

Ang lino sa Mindoro kanadlong Nobyembre 15, 1994, nga naka-mugna ug tsunami, adunay 78 katawo ang hikabsan sa kinabuh.

Kaniunay kini nga tsunami, ang unang balod nga miabot sa baybayon sa pinakadulo sa epispero, 2-3 ka minuto lamang hinuon sa lino. Kaniunay ang tsunami lumalagid ang pagkapanan ('locally generated'), wala nag-igong panahon sa pagpasidapa sa mga susama nini.

Mahimo usab nga ang tsunami nagagikan sa layo, kadaghang nagagikan sa ubang nasod patibol sa Pacific Ocean, sama sa Chile, Alaska sa USA ug Japan ('far field tsunamis'). Ang tsunami kanadlong Mayo 2, 1982 nga gikan sa makusog nga lino sa Chile mipatay ug 61 katawo sa Hilo, Hawaii ug 20 katawo ang gitahoy nga namatay dinhi sa Pilipinas. Ang oras sa pagpangandam sa tsunami nga nagagikan sa layo nga lugar mas taas (1 ngadto sa 24 ka oras). Kini makahatag-igo-igong panahon sa pagpasidapa ang mga tsunami nga nagagikan sa panahon nikan sa Pacific Tsunami Warning Center (PTWC) ug Northwest Pacific Tsunami Advisory Center (NWPATAC).

PHILIPPINE INSTITUTE OF VOLCANOLOGY AND SEISMOLOGY
 PHIVOLCS Bldg., C.P. Garcia Ave., U.P. Campus, Diliman, Quezon City, Philippines
 Tel. Nos. 9277300, 9274242, 9260011, 4091400 to 79
 PHIVOLCS Website: www.phivolcs.dost.gov.ph
 Facebook: @phivolcs_dost
 Twitter: @phivolcs_dost
 September 2007

PHILIPPINE TSUNAMI INFORMATION

Tsunami Information	Threat to the Philippines	Recommended Action for Affected Places
Advisory	A large earthquake is generated but either (1) there is no tsunami generated by this event or (2) a tsunami was generated but will not reach the Philippines.	No evacuation needed. The advisory is issued for information purposes only.
NO TSUNAMI THREAT		
Advisory SEA LEVEL CHANGE MONITORING	PHIVOLCS will monitor sea level changes and provide updates.	No evacuation order is in effect. Public is advised to wait and listen for updates.
Advisory	Minor sea level disturbance is expected in some coastal areas with wave heights of less than one (1) meter above the expected ocean tides.	People are advised to stay away from the beach and not to go to the coast. People whose shorelines are located very near the shorelines are advised to move farther inland. Owners of boats in harbors, estuaries or shallow coastal waters of the affected provinces should secure their boats and move away from the waterfront. Boats already at sea are advised to stay offshore in deep waters until further notified.
MINOR SEA LEVEL DISTURBANCE		
TSUNAMI WARNING	Destructive tsunami is generated with life threatening wave heights. (A destructive tsunami is expected to arrive to Philippine coastlines with wave heights of greater than one (1) meter above the expected ocean tides.)	Immediate evacuations of coastal communities that maybe affected are strongly advised. Owners of boats in harbors, estuaries or shallow coastal waters of the affected provinces should secure their boats and move away from the waterfront. Boats already at sea are advised to stay offshore in deep waters until further notified.

The Philippine Institute of Volcanology and Seismology (PHIVOLCS) is the Tsunami Warning Focal Point of the Philippines.
 PHIVOLCS Building, C.P. Garcia Avenue, U.P. Campus, Diliman, Quezon City 1101
 Tel. Nos. +632 9277300 to 79, +632 9260011, +632 9260012 to 14, +632 9260015 to 17
 Website: www.phivolcs.dost.gov.ph

THE GREAT EAST JAPAN EARTHQUAKE AND TSUNAMI 11 MARCH 2011

BAGONG PAG-ASA

PHIVOLCS Bldg., C.P. Garcia Ave., U.P. Campus, Diliman, Quezon City, Philippines
 Tel. Nos. 9277300, 9274242, 9260011, 4091400 to 79
 PHIVOLCS Website: www.phivolcs.dost.gov.ph

THE GREAT EAST JAPAN EARTHQUAKE AND TSUNAMI 11 MARCH 2011

ORAS NG PELIGRO

PHIVOLCS Bldg., C.P. Garcia Ave., U.P. Campus, Diliman, Quezon City, Philippines
 Tel. Nos. 9277300, 9274242, 9260011, 4091400 to 79
 PHIVOLCS Website: www.phivolcs.dost.gov.ph

THE GREAT EAST JAPAN EARTHQUAKE AND TSUNAMI 11 MARCH 2011

THE DANGEROUS ROAD

PHIVOLCS Bldg., C.P. Garcia Ave., U.P. Campus, Diliman, Quezon City, Philippines
 Tel. Nos. 9277300, 9274242, 9260011, 4091400 to 79
 PHIVOLCS Website: www.phivolcs.dost.gov.ph

THE GREAT EAST JAPAN EARTHQUAKE AND TSUNAMI 11 MARCH 2011

ANG HULING SAYONARA
(ANG HULING PAALAM...)

PHIVOLCS Bldg., C.P. Garcia Ave., U.P. Campus, Diliman, Quezon City, Philippines
 Tel. Nos. 9277300, 9274242, 9260011, 4091400 to 79
 PHIVOLCS Website: www.phivolcs.dost.gov.ph

HOW TO CONDUCT TSUNAMI DRILL

A TSUNAMI is a series of waves commonly generated by under-the-sea earthquakes, and whose heights could be greater than 5 meters. Because of this, tsunami waves can flood and inundate coastal areas.

A TSUNAMI HAZARD MAP shows areas that can be affected by a tsunami. Hazard maps are meant to educate and prepare the community and can be used as tools in planning evacuations. These maps are generated by experts and specialists after careful study of the area.

DESIGNING A TSUNAMI EVACUATION PLAN

Step 1: Acquire a tsunami hazard map. Acquire detailed community map.

Step 2: Identify critical evacuation areas.

Step 3: Recommended evacuation routes.

Step 4: Evacuation routes should be marked on the map.

Step 5: Evacuation routes should be marked on the map.

Step 6: Evacuation routes should be marked on the map.

PHASES OF A TSUNAMI DRILL

1 ALARM PHASE: 1 minute alarm signaling a strong earthquake.

2 REACTION: People do the response procedure during the earthquake such as the "Duck, Cover and Hold".

3 EVACUATION PHASE: Residents quickly move out of their houses to go to designated evacuation areas.

4 ASSEMBLY PHASE: Residents from the same area or groups should group together to better facilitate headcounting and accounting of residents.

5 HEADCOUNT PHASE: How many are expected to arrive based on designated evacuation information.

6 DRILL TERMINATION:

PHILIPPINE INSTITUTE OF VOLCANOLOGY AND SEISMOLOGY
 PHIVOLCS Bldg., C.P. Garcia Ave., U.P. Campus, Diliman, Quezon City, Philippines
 Tel. Nos. 9277300, 9274242, 9260011, 4091400 to 79
 PHIVOLCS Website: www.phivolcs.dost.gov.ph

Natural signs of impending local TSUNAMI!

SHAKE
A felt earthquake

DROP
Unusual sea level change: sudden seawater drop or rise

ROAR
Rumbling sound of approaching waves

PHILIPPINE INSTITUTE OF VOLCANOLOGY AND SEISMOLOGY
 PHIVOLCS Bldg., C.P. Garcia Ave., U.P. Campus, Diliman, Quezon City, Philippines
 Tel. Nos. 9277300, 9274242, 9260011, 4091400 to 79
 PHIVOLCS Website: www.phivolcs.dost.gov.ph

If you are along or near a coastal area and observed any of the natural signs..
Immediately MOVE to higher ground right after a strong shaking!

Philippine Tsunamis and Seiches (1589-2012)

Maria Leonila P. Bautista, Bartolome C. Bautista, Joan C. Salcedo and Ishmael C. Narag
 A Catalogue of tsunami events in the Philippines

PHILIPPINE INSTITUTE OF VOLCANOLOGY AND SEISMOLOGY
 PHIVOLCS Bldg., C.P. Garcia Ave., U.P. Campus, Diliman, Quezon City, Philippines
 Tel. Nos. 9277300, 9274242, 9260011, 4091400 to 79
 PHIVOLCS Website: www.phivolcs.dost.gov.ph

#MAGHANDA
 Meteorological and Geological Hazard Advisories, Warnings and Notifications for Disaster Action

TSUNAMI
 AWARENESS AND PREPAREDNESS

PHILIPPINE INSTITUTE OF VOLCANOLOGY AND SEISMOLOGY
 PHIVOLCS Bldg., C.P. Garcia Ave., U.P. Campus, Diliman, Quezon City, Philippines
 Tel. Nos. 9277300, 9274242, 9260011, 4091400 to 79
 PHIVOLCS Website: www.phivolcs.dost.gov.ph



6: Outreach and public awareness and education resources are available and distributed



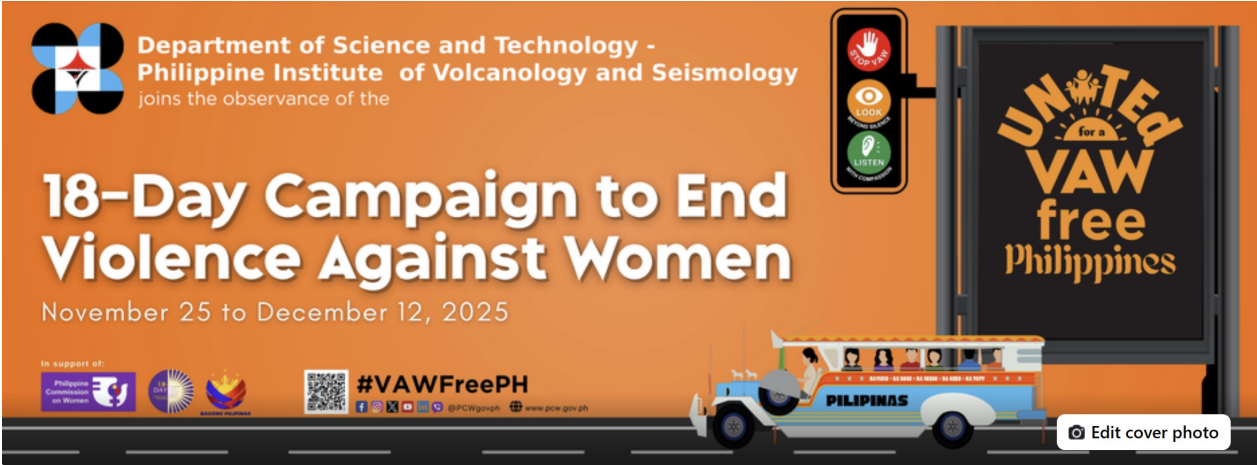
PHIVOLCS



phivolcs_dost

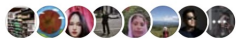


DOST-PHIVOLCS



Philippine Institute of Volcanology and Seismology (PHIVOLCS-DOST)

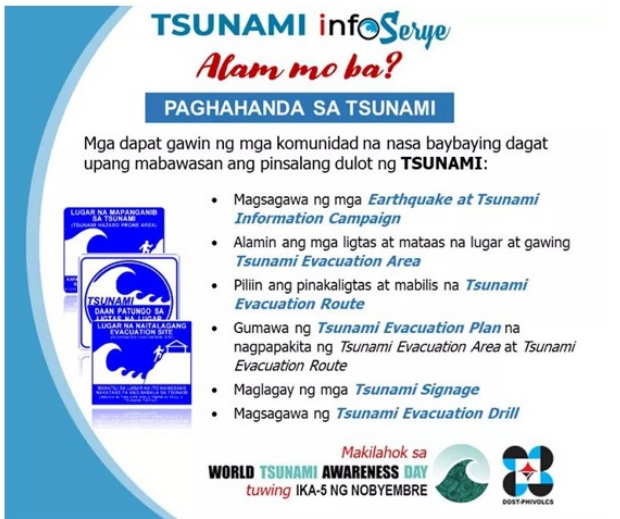
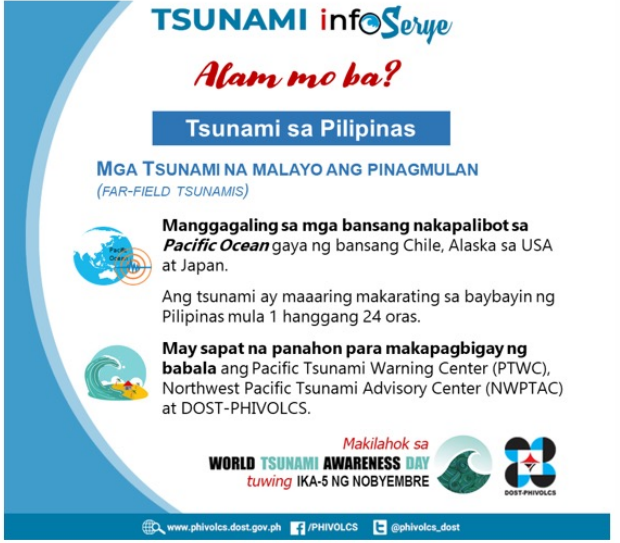
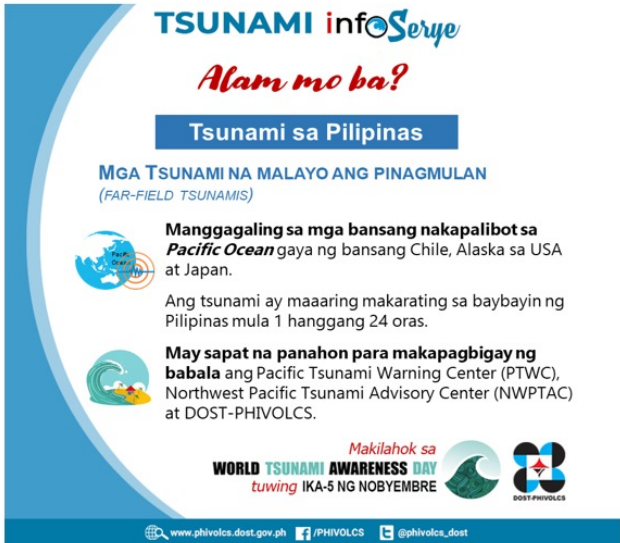
4.2M followers • 107 following



Professional dashboard

Edit

Advertise

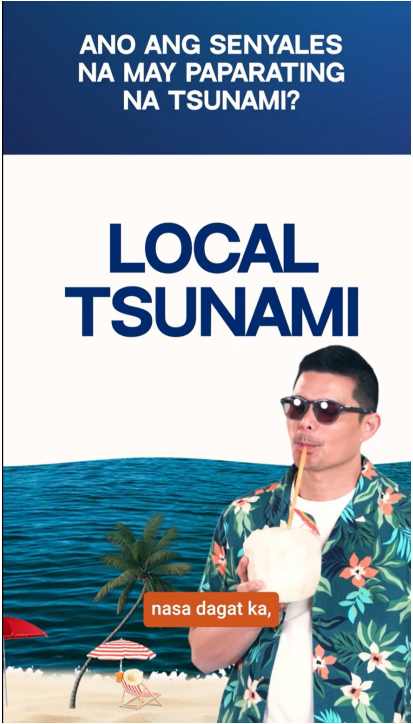


Tsunami InfoSerye



DOST-PHIVOLCS

6: Outreach and public awareness and education resources are available and distributed



Tsunami 101

Tales of Disasters



Smart Maging Laging Handa videos

- Tsunami Audio 3_During disaster.mp3
- Tsunami Audio 2_Pre-disaster.mp3
- Tsunami Audio 1_Pre-disaster.mp3

Panatag Pilipinas videos
and audio files

6: Outreach and public awareness and education resources are available and distributed



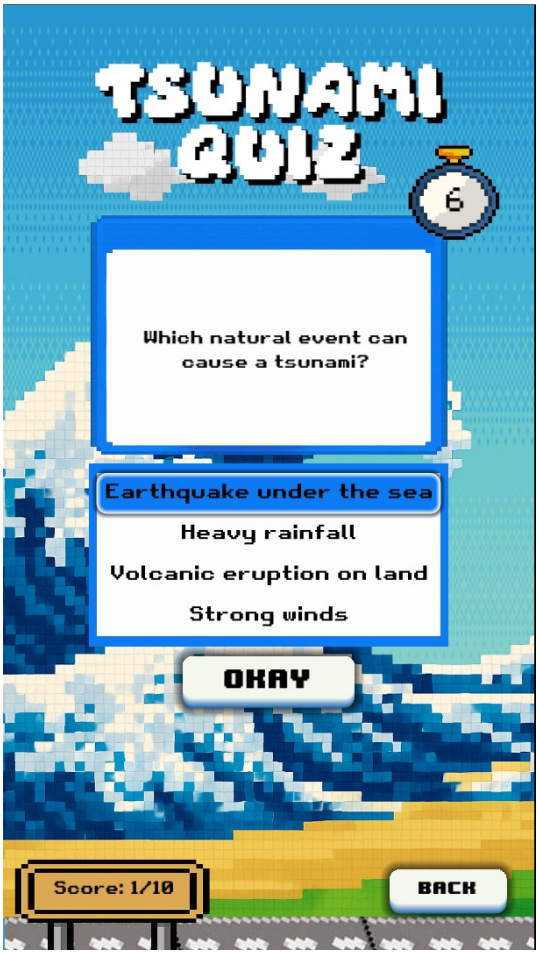
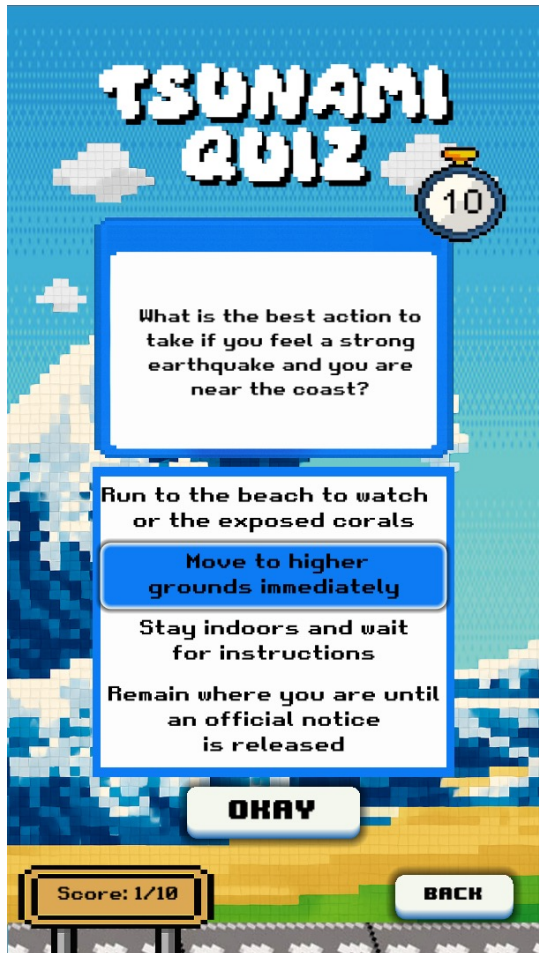
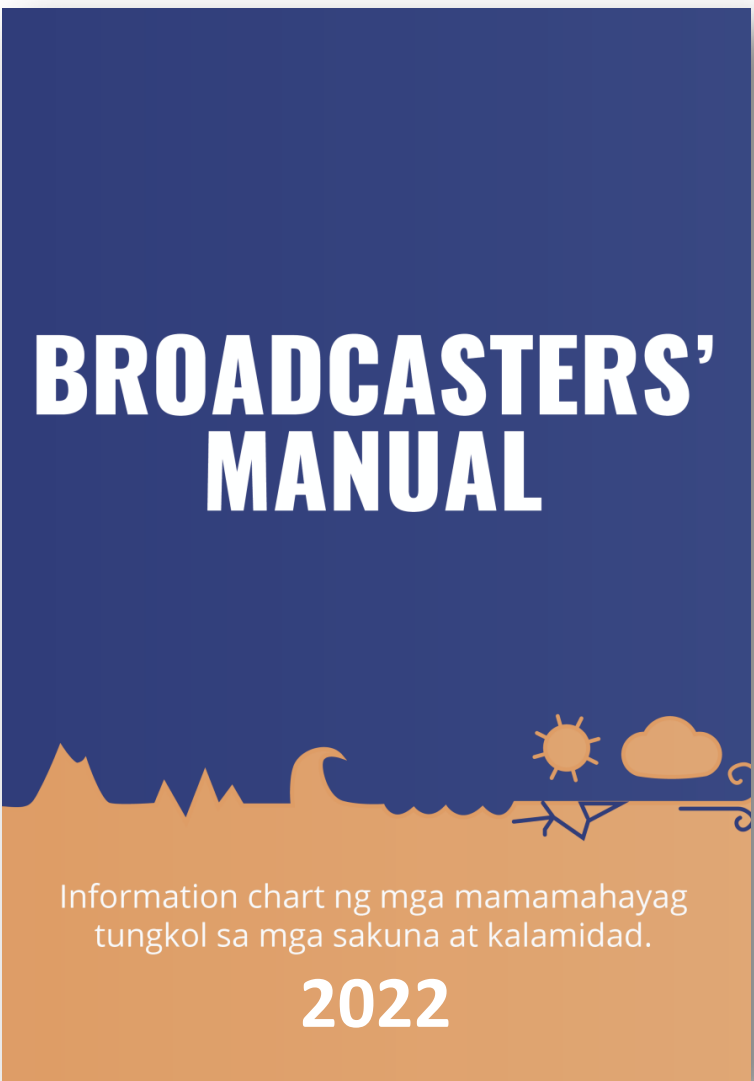
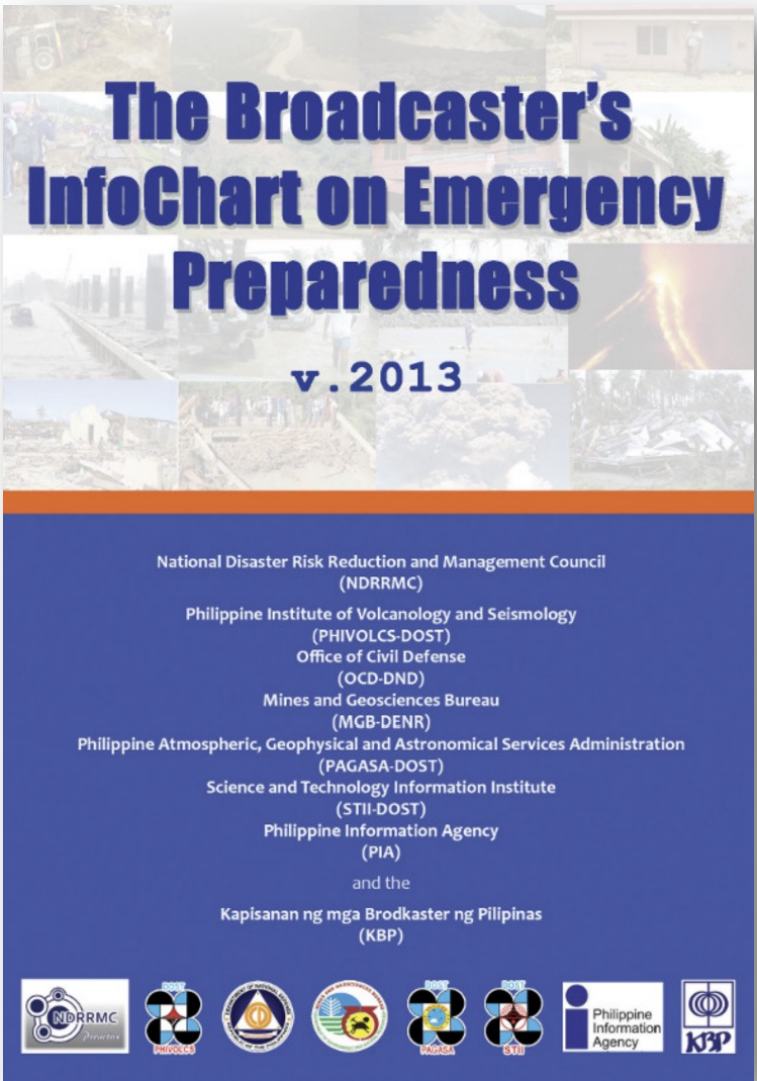
Available on SoundCloud



**DANAS Sourcebooks
(Earthquake, Tsunami, and
Volcano Narratives)
in various languages**



6: Outreach and public awareness and education resources are available and distributed



Quiz in exhibits

6: Outreach and public awareness and education resources are available and distributed



Pagadian tsunami marker 1976 Moro Gulf Earthquake and Tsunami



6: Outreach and public awareness and education resources are available and distributed



**Calapan City tsunami marker
1994 Mindoro Earthquake and
Tsunami**



7: Outreach or education activities are held at least 3 times a year

- Training for teachers in elementary, junior and senior high school, school DRR focal persons, and education program specialists/supervisors
- Department of Education (DepEd) and the Ministry of Basic, Higher, and Technical Education (MBHTE)

Disaster Readiness and Risk Reduction for Volcano, Earthquake, and Tsunami Hazards

A Guidebook for Senior High School Teachers

Department of Science and Technology
PHILIPPINE INSTITUTE
OF VOLCANOLOGY
AND SEISMOLOGY



DOST-PHIVOLCS

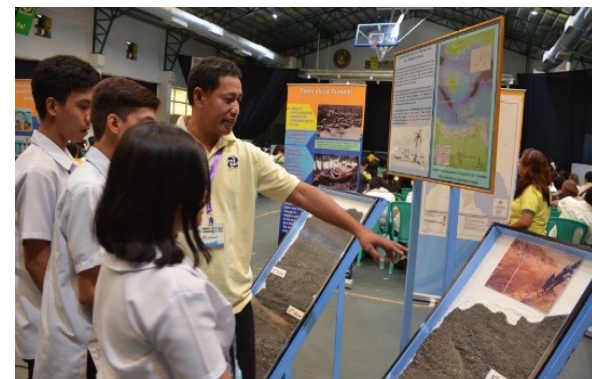
7: Outreach or education activities are held at least 3 times a year

- 3R (Risk Reduction and Resilience) Campaign:
Tsunami Ready Community
- Media: seminar-workshops (InfoPress) and press briefings (InfoSentro)
- Outside lectures and educational tours
- Exhibits (NSTW, RSTW, by request, client-initiated)
- Earthquake and tsunami drills (NSED)





**WORLD TSUNAMI
AWARENESS DAY**
5 NOVEMBER



Tsunami exhibit and orientation for
schoolchildren

Tsunami seminar and unveiling
of tsunami signage with the LGUs

2016-2025 WTAD Activities



DOST-PHIVOLCS

Private partnerships

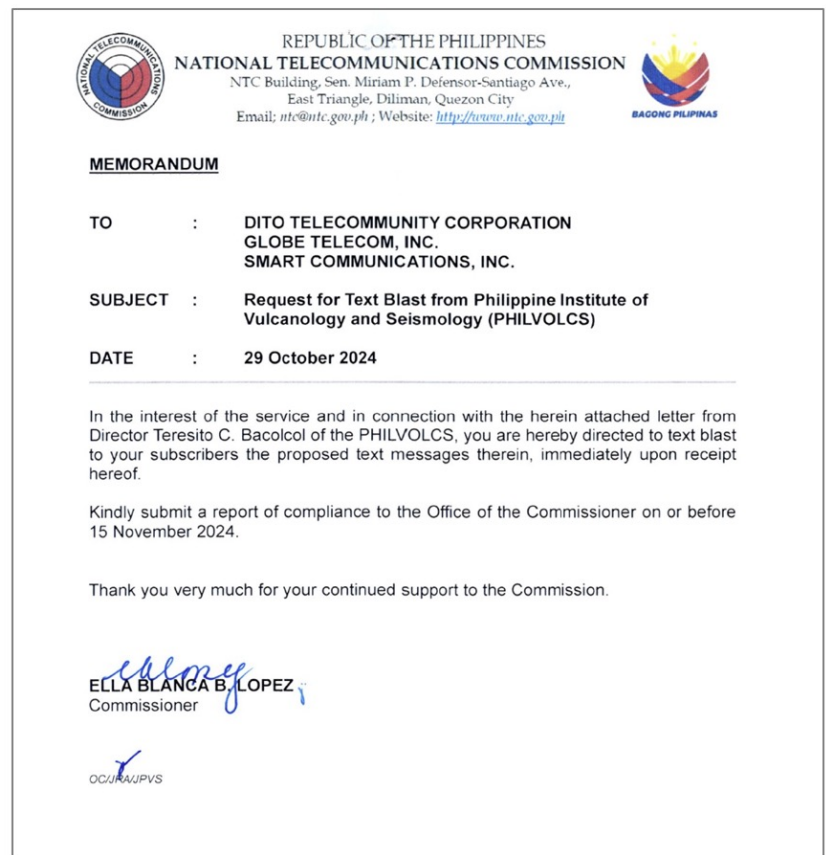


Figure 4. NTC Memorandum to the Communication Service Providers (CSP)

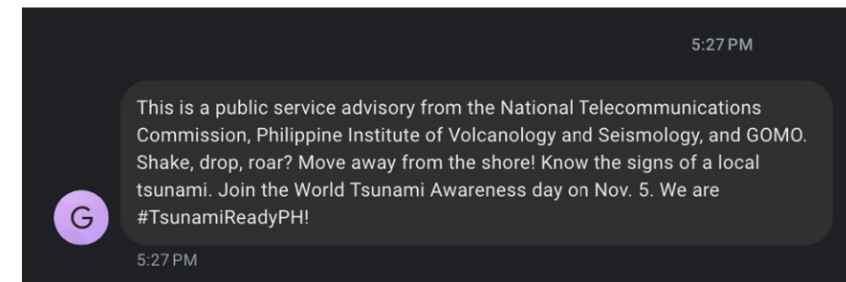


Figure 5. Globe public service advisory




Media engagement

News articles

Public engagement



 **Philippine Institute of Volcanology and Seismology (PHIVOLCS-DOST)** · October 27 ·

Free webinar: **PHIVOLCS InfoBit: Tsunami-Ready na ang Komunidad ko!**
Alam mo ba na lahat ng tabing-dagat sa Pilipinas ay maaaring maapektuhan ng tsunami kaya nararapat na... See more



PHIVOLCS InfoBit:
TSUNAMI-READY NA ANG KOMUNIDAD KO!
Learning from Good Practices on Tsunami Awareness and Preparedness

5 November 2025 01:30 - 04:00 PM  **LIVE** DOST-PHIVOLCS Facebook



 **ZOOM REGISTRATION**

Wed, Nov 5

Free webinar: PHIVOLCS InfoBit: Tsunami-Ready na ang Ko

30 Went · 256 Interested

Set up live video

PHIVOLCS InfoBit

2016-2025 WTAD Activities



WORLD TSUNAMI AWARENESS DAY
5 NOVEMBER



DOST-PHIVOLCS

Public engagement



**WORLD TSUNAMI
AWARENESS DAY**
5 NOVEMBER



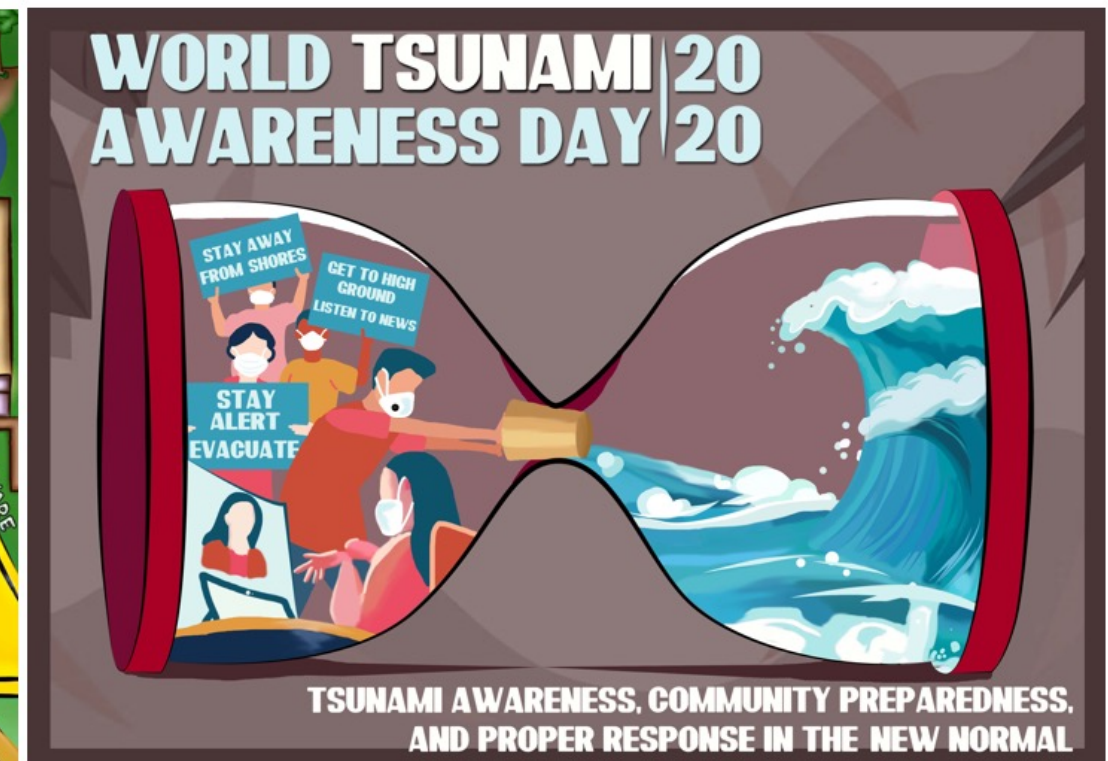
**“Tsunami’y Huwag Maliitin,
Wastong Impormasyon Alamin
Babala ay Sundin,
Paghahanda Ugaliin”**



**“Maging alerto sa kapaligiran,
Lumayo sa dalampasigan.
Magkaisa’t magtulungan,
Tiyak, Tsunami’y malalagpasan.”**



**“Kahandaan at Kaalaman
Magkatuwang na Kailangan
Upang Tsunami’y Mapagtagumpayan”**



Slogan and Digital Poster-Making Online Contests

2016-2025 WTAD Activities



DOST-PHIVOLCS

Public engagement



**WORLD TSUNAMI
AWARENESS DAY**
5 NOVEMBER



**WORLD TSUNAMI
AWARENESS DAY**
5 NOVEMBER

**TSUNAMI! RUN
for SAFETY**

📅 5 November 2024 | Start at 5:00 AM
📍 Start at **FGR Park** → Finish at **Baywalk, Central, City of Mati**

REGISTER NOW

Register at **Philippine Red Cross Davao Oriental Chapter**
located at Hospital Drive, Brgy. Matiao, City of Mati
Contact number: LEAMOR TEMPLA – 09499335533

PHP 300.00
✓ RACE BIBS AND SINGLET

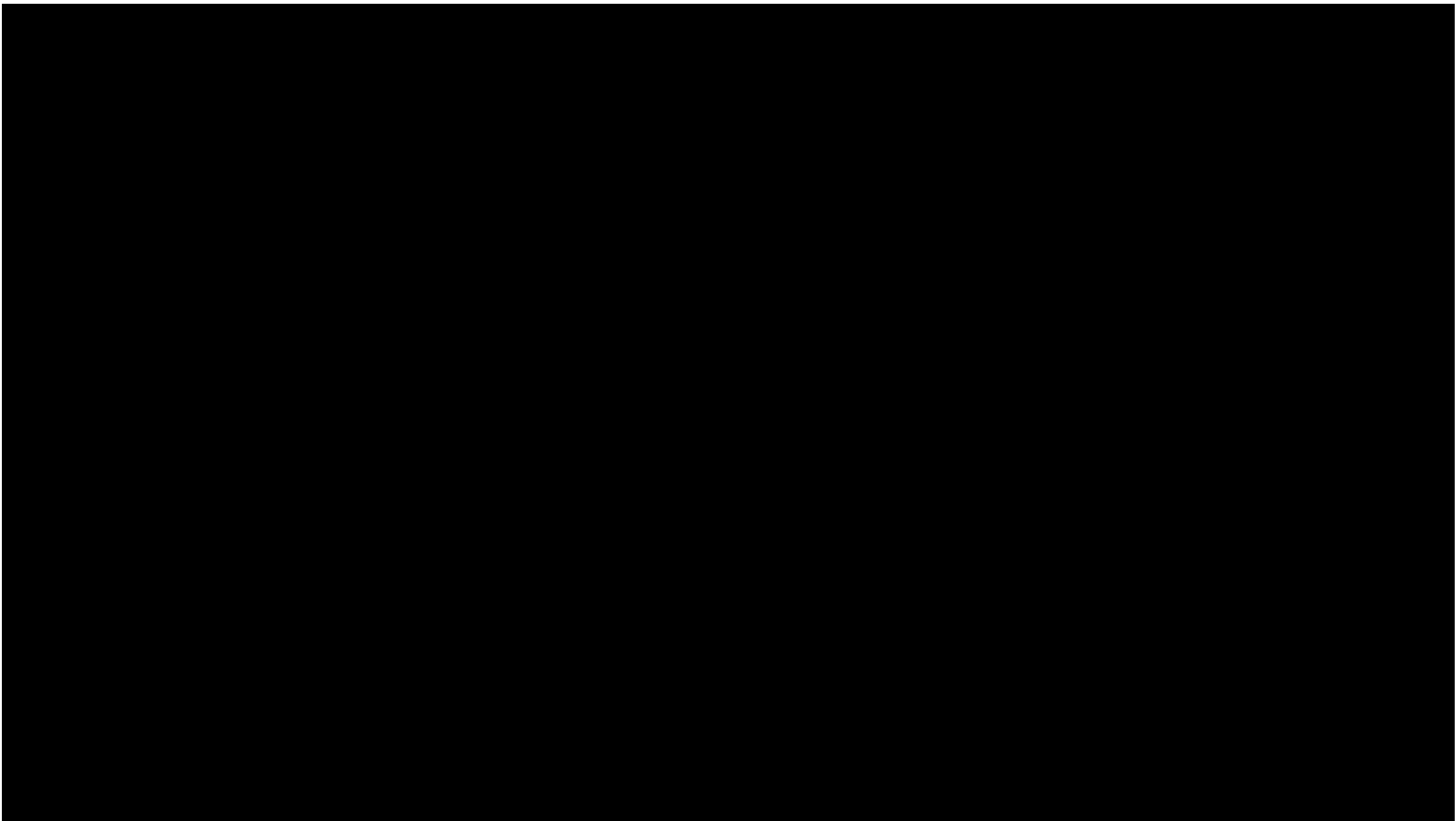




2016-2025 WTAD Activities



Public engagement



CHALLENGES	SOLUTIONS
Content?	
Availability and accessibility?	
Dissemination and communication channels?	
Frequency? 3x/year	



www.phivolcs.dost.gov.ph



PHIVOLCS



phivolcs_dost



DOST-PHIVOLCS

CONTACT US:

Philippine Institute of Volcanology and Seismology

PHIVOLCS Building, C.P Garcia Ave., Diliman, Quezon City
Philippines 1101

Trunkline: +632 8426-1468 up to 79

Official mail: phivolcs_mail@phivolcs.dost.gov.ph

Seismological Observation & Earthquake Prediction Division (SOEPD)

Direct line: (+63-2) 8 426- 1468 to 79, local 304

Email: soepd@phivolcs.dost.gov.ph

Volcano Monitoring and Eruption Prediction Division (VMEPD)

Direct line: (+63-2) 8 426- 1468 to 79, local 310

Email: vmepd@phivolcs.dost.gov.ph

Geologic Disaster Awareness & Preparedness Division (GDAPD)

Direct line: (+63-2) 8 426- 1468 to 79, local 201

Email: phivolcs_mail@phivolcs.dost.gov.ph

phivolcs.mail@gmail.com