



## TSUNAMI READY PHILIPPINES NATIONAL WORKSHOP

# *Communications Example:*



**Philippine Tsunami Information**

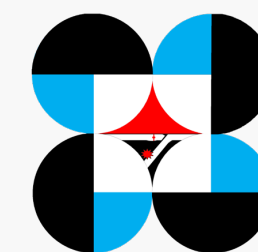


**Shake, Drop, and Roar**



**Challenges and Solutions**

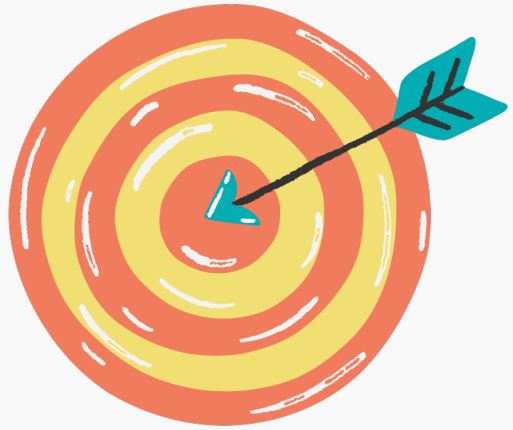
Park Inn by Radisson, North EDSA, Quezon City, Philippines  
11 December 2025



**DOST-PHIVOLCS**

# Objective:

---



To provide a clear understanding of how *tsunami information and warnings* are communicated in the Philippines, covering the Philippine Tsunami Information levels, the “Shake, Drop, and Roar” natural warning, and to discuss key communication challenges and solutions that can strengthen tsunami preparedness.

# DOST-PHIVOLCS

## Standard Operating

## Procedure for the

## Issuance of Earthquake

## Information

---

\*DRC – Data Receiving Center

### RESPONSIBILITIES

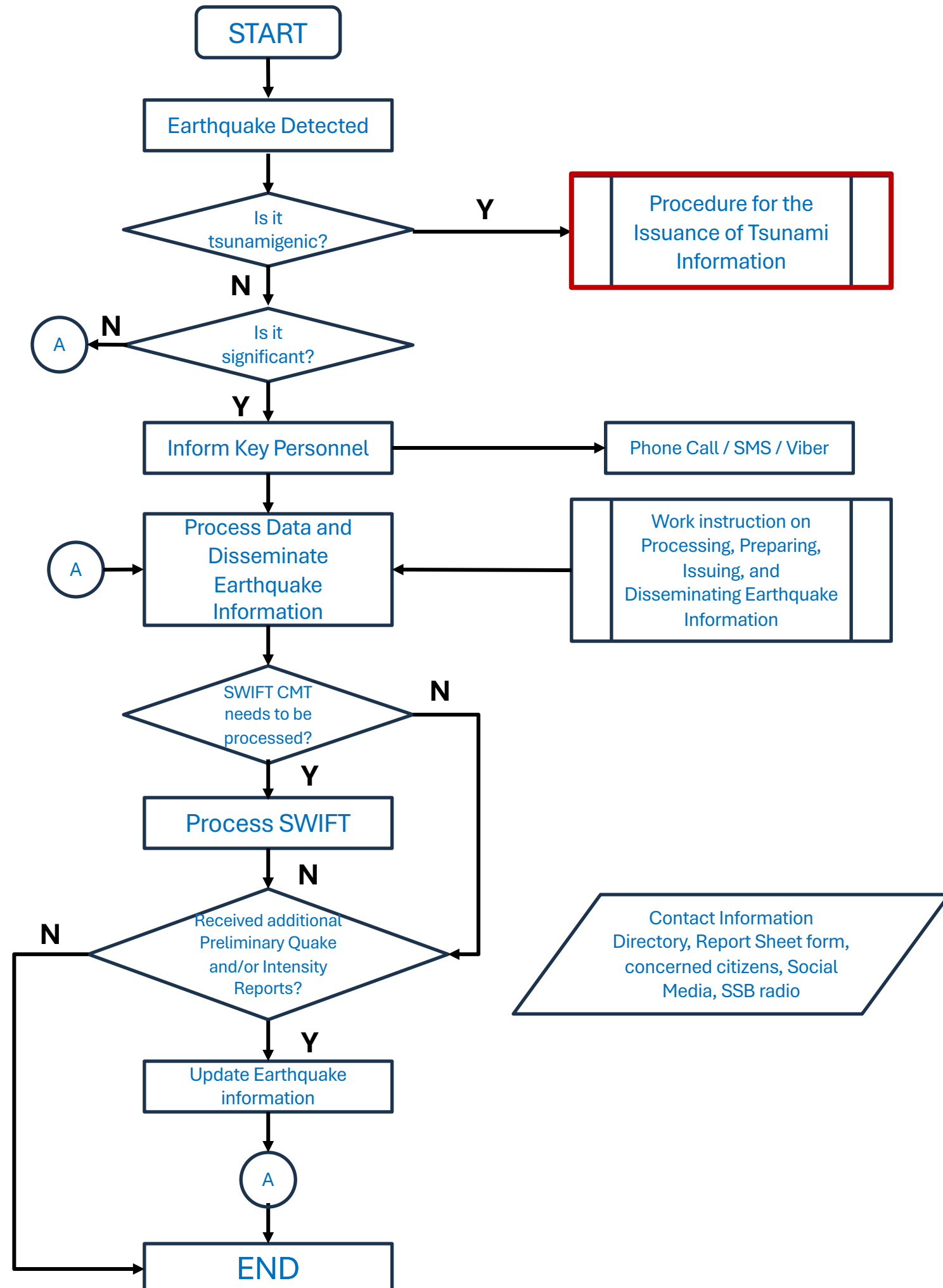
DRC Watchstander

DRC Watchstander

DRC Watchstander

DRC Watchstander

### FLOWCHART



# DOST-PHIVOLCS OPERATIONS MANUAL

For Tsunami Monitoring

---

*2025*



---

# Tsunami Threat in the Philippines

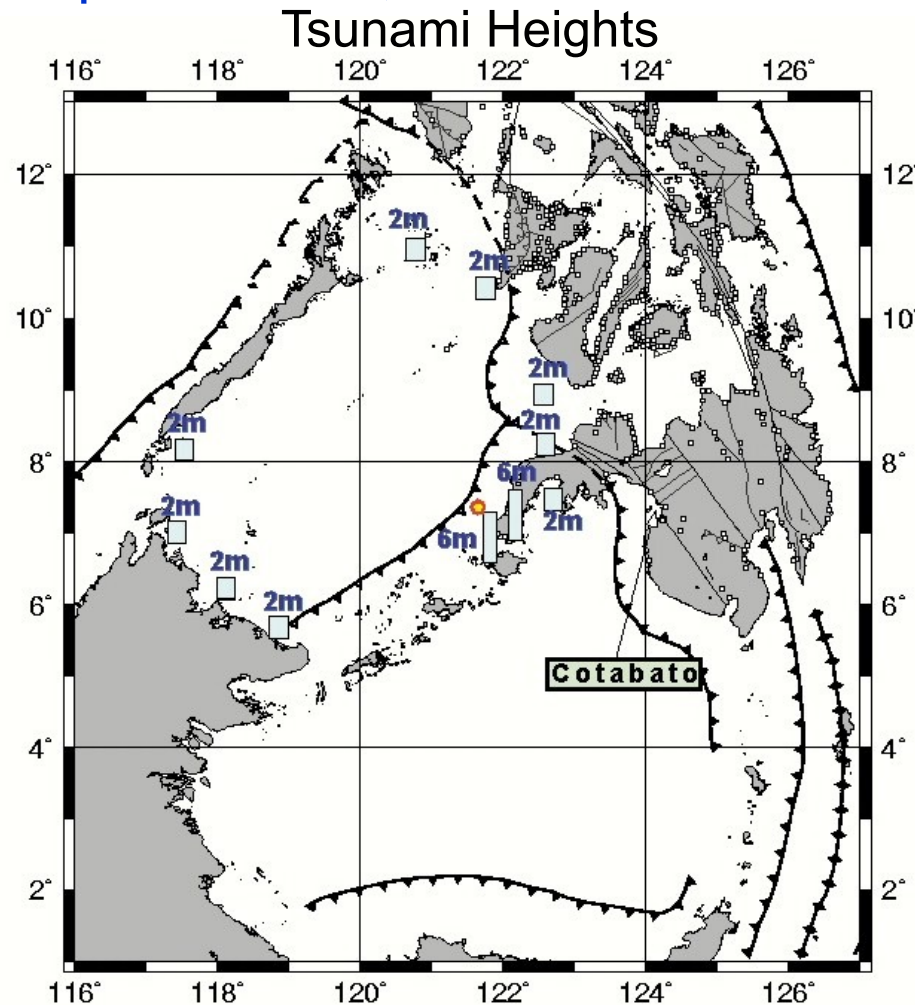
Two types of tsunami generation

1. Local *tsunami*
2. Far field or distant tsunamis



# LOKAL na TSUNAMI

The September 21, 1997 Tsunami in Sulu Sea



## Alam mo ba?

### Tsunami sa Pilipinas

#### LOKAL NA TSUNAMI (LOCALLY-GENERATED TSUNAMIS)



Magmumula sa mga karagatan sa paligid ng Pilipinas. Ang unang tsunami ay **makararating sa pinakamalapit na baybayin mula sa episentro ng lindol sa loob ng 2 hanggang 5 minuto matapos ang lindol.**



Walang sapat na panahon para sa babala. Agad na **LUMIKAS** patungo sa mataas na lugar o papalayo sa dagat!

Makilahok sa  
**WORLD TSUNAMI AWARENESS DAY**  
tuwing IKA-5 NG NOBYEMBRE



# Local Tsunami:

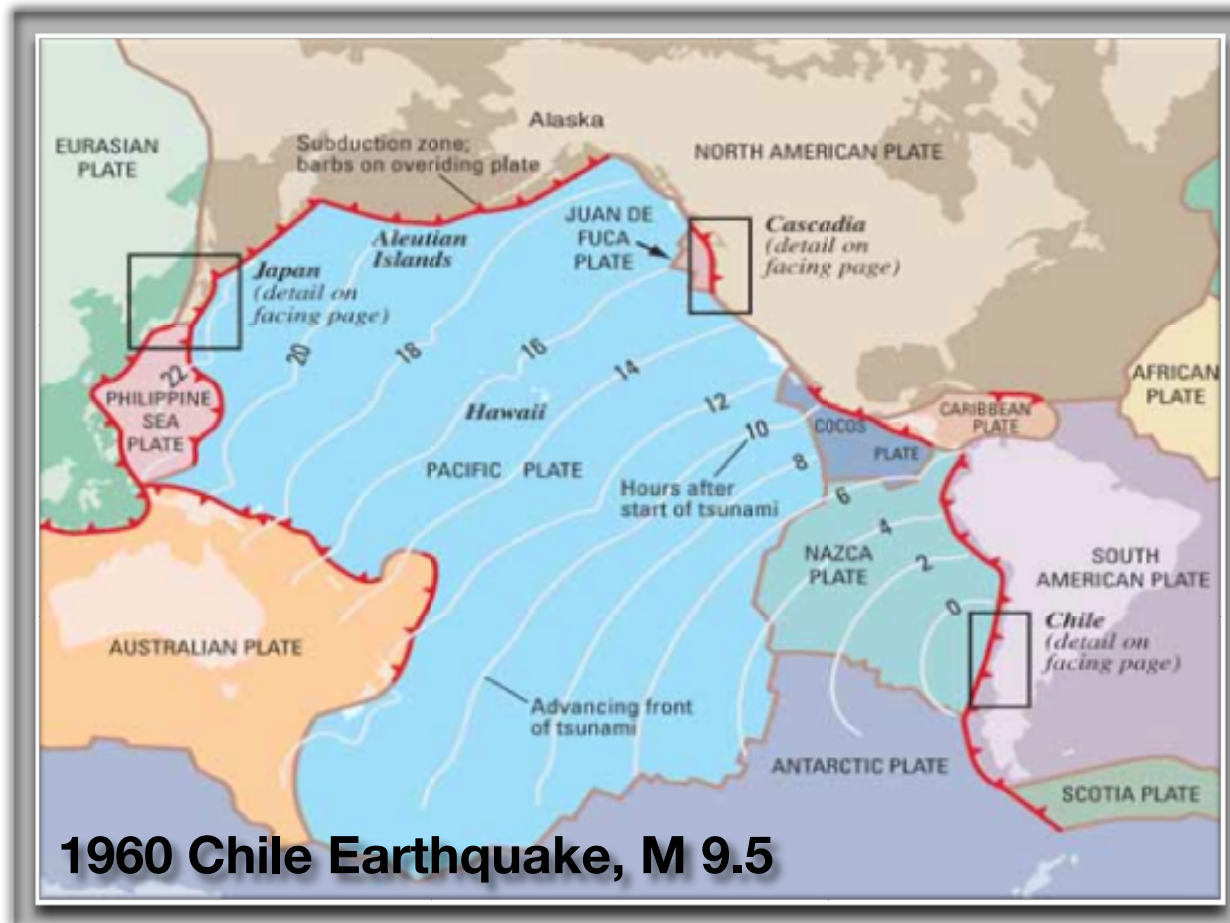
- Earthquake source located within 200 km
- Travel time to Philippine shores: less than 1 hour

Criteria Table Based on Preliminary Magnitude and Depth

Parameters	Templates
M < 6.5  6.5 ≤ M < 7.0 D > 50 km  7.0 ≤ M < 7.5 D > 60 km	No Tsunami Threat
6.5 ≤ M < 7.0 D ≤ 50 km  7.0 ≤ M < 7.5 30 km < D ≤ 60 km  7.5 ≤ M < 8.0 D > 70 km	Minor Sea–Level Disturbance
7.0 ≤ M < 7.5 D ≤ 30 km  7.5 ≤ M < 8.0 D ≤ 70 km  M ≥ 8.0 D ≥ 100 km	Tsunami Warning



# TSUNAMI na Malayo Pinagmulan (Far-field tsunamis)



## Alam mo ba?

### Tsunami sa Pilipinas

#### MGA TSUNAMI NA MALAYO ANG PINAGMULAN (FAR-FIELD TSUNAMIS)



**Manggagaling sa mga bansang nakapalibot sa *Pacific Ocean*** gaya ng bansang Chile, Alaska sa USA at Japan.

Ang tsunami ay maaaring makarating sa baybayin ng Pilipinas mula 1 hanggang 24 oras.



**May sapat na panahon para makapagbigay ng babala** ang Pacific Tsunami Warning Center (PTWC), Northwest Pacific Tsunami Advisory Center (NWPTAC) at DOST-PHIVOLCS.

Makilahok sa  
**WORLD TSUNAMI AWARENESS DAY**  
tuwing IKA-5 NG NOBYEMBRE



# Regional Tsunami:

- Source located 200–1000 km from the Philippines
- Tsunami travel time: 1 to 3 hours
- Common source regions: Mariana Islands, Southern Japan, Indonesia, Taiwan

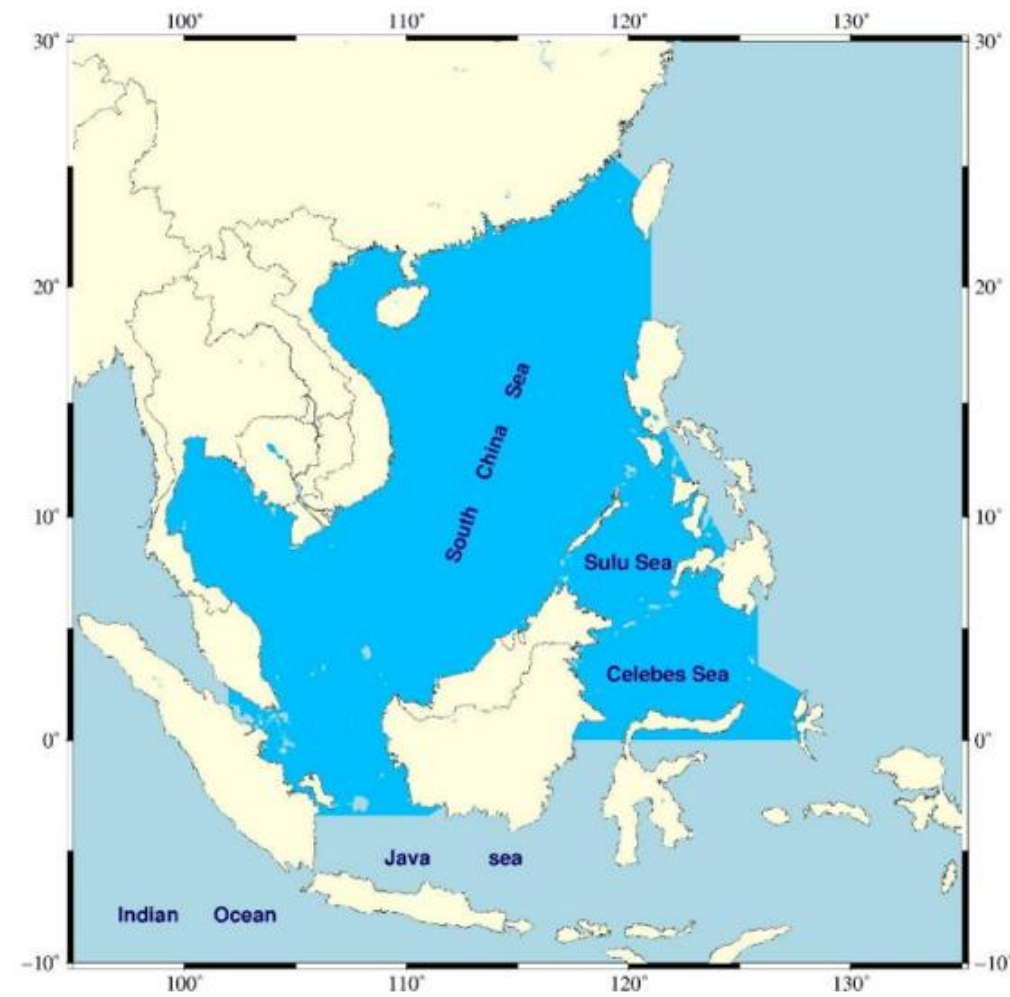
M: Magnitude		D: Depth	
Source Class	Location	Parameters	Templates
Regional	Mariana Islands	$6.5 \leq M < 7.0$ $D \geq 100 \text{ km}$	No Tsunami Threat
		$7.0 \leq M < 7.5$ $D \leq 100 \text{ km}$	Sea Level Change Monitoring
	Indonesia	$M \geq 7.5$ $D \leq 100 \text{ km}$ <i>With confirmed tsunami wave heights &lt; 1 m</i>	Minor Sea Level Disturbance
	Taiwan	$M \geq 7.5$ $D \leq 100 \text{ km}$ <i>With confirmed tsunami wave heights <math>\geq 1 \text{ m}</math></i>	Tsunami Warning

## Teleseismic Tsunami:

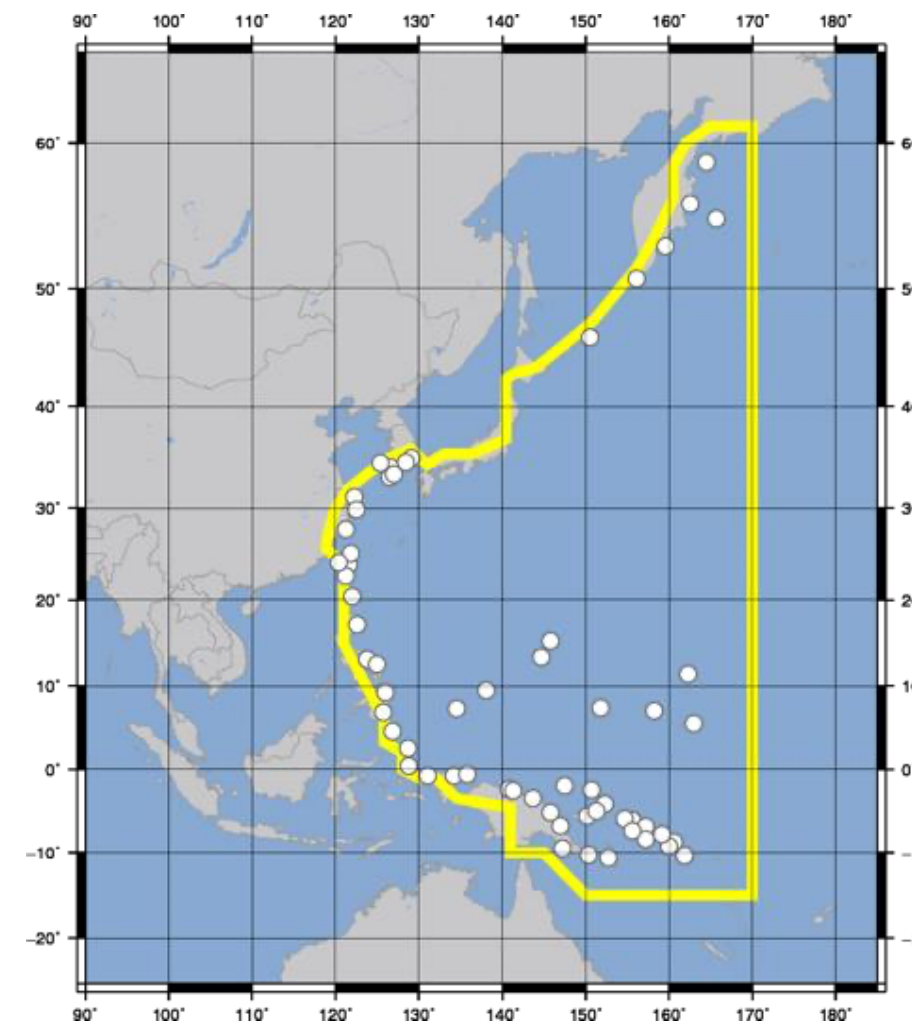
- Source more than 1,000 km away
- Tsunami travel time: more than 3 hours

M: Magnitude		D: Depth	
Source Class	Location	Parameters	Templates
Teleseismic	See page 53	$6.5 \leq M < 8.0$ $D \leq 100 \text{ km}$	No Tsunami Threat
		$M \geq 8.0$ $D \leq 100 \text{ km}$  No confirmed tsunami	Sea Level Change Monitoring
		$M \geq 8.0$ $D \leq 100 \text{ km}$  With confirmed tsunami wave heights < 1 m	Minor Sea Level Disturbance
		$M \geq 8.0$ $D \leq 100 \text{ km}$  With confirmed tsunami wave heights $\geq 1 \text{ m}$	Tsunami Warning





SCSTAC\*



NWPTAC\*

As a member state of the Intergovernmental Coordination Group for the Pacific Tsunami Warning and Mitigation System (ICG/PTWS),

PHIVOLCS receives tsunami information from International Tsunami Warning Centers (ITWCs)

**SCSTAC** – South China Sea Tsunami Advisory Center

**NWPTAC** – Northwest Pacific Tsunami Advisory Center

**PTWC** – Pacific Tsunami Warning Center



PTWC

1. **TEXT PRODUCT** – gives the details about the earthquake parameters, forecast points, tsunami wave heights and the list of countries that may be affected.

WESS31 BABJ 301406
TSUNAMI BULLETIN NUMBER 1 ISSUED BY SOUTH CHINA SEA TSUNAMI ADVISORY CENTER (SCSTAC) ISSUED 1405 UTC Sep 30 2025
...TSUNAMI INFORMATION...
**** NOTICE **** NOTICE **** NOTICE **** NOTICE **** NOTICE **** NOTICE **** THIS STATEMENT IS ISSUED FOR INFORMATION ONLY IN SUPPORT OF THE UNESCO/IOC SOUTH CHINA SEA SUB-REGIONAL TSUNAMI WARNING AND MITIGATION SYSTEM. NATIONAL AUTHORITIES WILL BE RESPONSIBLE FOR DETERMINATION OF THE APPROPRIATE LEVEL OF ALERT FOR EACH COUNTRY. THE PUBLIC SHOULD FOLLOW THE GUIDANCE OF NATIONAL AUTHORITIES. **** NOTICE **** NOTICE **** NOTICE **** NOTICE **** NOTICE **** NOTICE ****
[ PRELIMINARY EARTHQUAKE PARAMETERS ] *MAGNITUDE        6.9 *ORIGIN TIME      1359 UTC Sep 30 2025 *COORDINATES      11.07 N,124.08 E *DEPTH            20 KM *LOCATION           LEYTE, PHILIPPINES
[ EVALUATION ] THERE IS NO TSUNAMI THREAT FROM THIS EARTHQUAKE BASED ON HISTORICAL EARTHQUAKE AND TSUNAMI DATA. HOWEVER, NON-DESTRUCTIVE SEA LEVEL FLUCTUATIONS MAY BE GENERATED ALONG COASTS NEAR THE EPICENTER.
[ RECOMMENDED ACTIONS ] PERSONS ALONG COASTAL AREAS NEAR THE EPICENTER SHOULD BE AWARE OF POSSIBILITY OF MINOR TSUNAMI WAVES AND UNUSUAL CURRENT. NO OTHER ACTION IS REQUIRED.
[ UPDATES ] THIS WILL BE THE ONLY BULLETIN REGARDING THIS EVENT UNLESS MAJOR REVISION ON

South China Sea Tsunami  
Advisory Center  
(SCSTAC)

TSUNAMI BULLETIN NUMBER 002 ISSUED BY NWPTAC(JMA) ISSUED AT 1533Z 08 DEC 2025
HYPOCENTRAL PARAMETERS ORIGIN TIME:1415Z 08 DEC 2025 PRELIMINARY EPICENTER:LAT41.0NORTH LON142.3EAST HOKKAIDO, JAPAN REGION JAPAN - KURIL ISLANDS - KAMCHATKA PENINSULA MAG:7.6 (MJMA)
EVALUATION THERE IS A POSSIBILITY OF A DESTRUCTIVE REGIONAL TSUNAMI
ESTIMATION AT FORECAST POINTS - NO TSUNAMI WAVES WITH AN AMPLITUDE OF 0.3 METERS OR MORE ARE EXPECTED AT ANY FORECAST POINT.
HOWEVER, IN SOME COASTAL AREAS (PARTICULARLY NEAR THE EPICENTER), HIGHER TSUNAMI WAVES THAN ESTIMATED MAY ARRIVE. AUTHORITIES SHOULD BE AWARE OF THIS POSSIBILITY.
MEASUREMENTS OR REPORTS OF TSUNAMI LOCATION                COORDINATES ARRIVAL TIME AMPL OFUNATO               39.0N 141.8E MAXIMUM TSUNAMI WAVE 1507Z 08 DEC 0.2M
MAXIMUM TSUNAMI WAVE - HALF THE AMPLITUDE FROM THE TROUGH TO THE CREST
THIS WILL BE THE FINAL BULLETIN UNLESS CHANGES IN THE POTENTIAL FOR TSUNAMI GENERATION ARE DEEMED POSSIBLE BASED ON EARTHQUAKE RE-EVALUATION OR REPORTS INDICATING TSUNAMI OBSERVATION ARE RECEIVED.

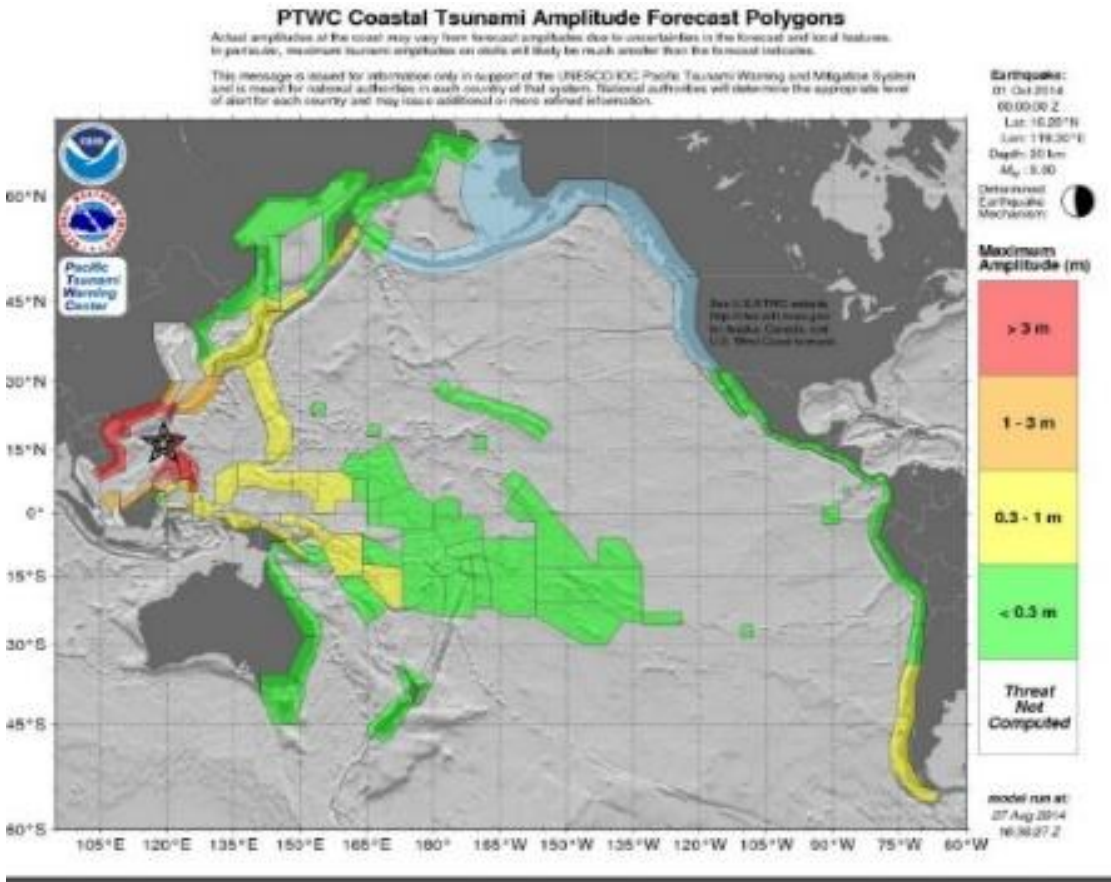
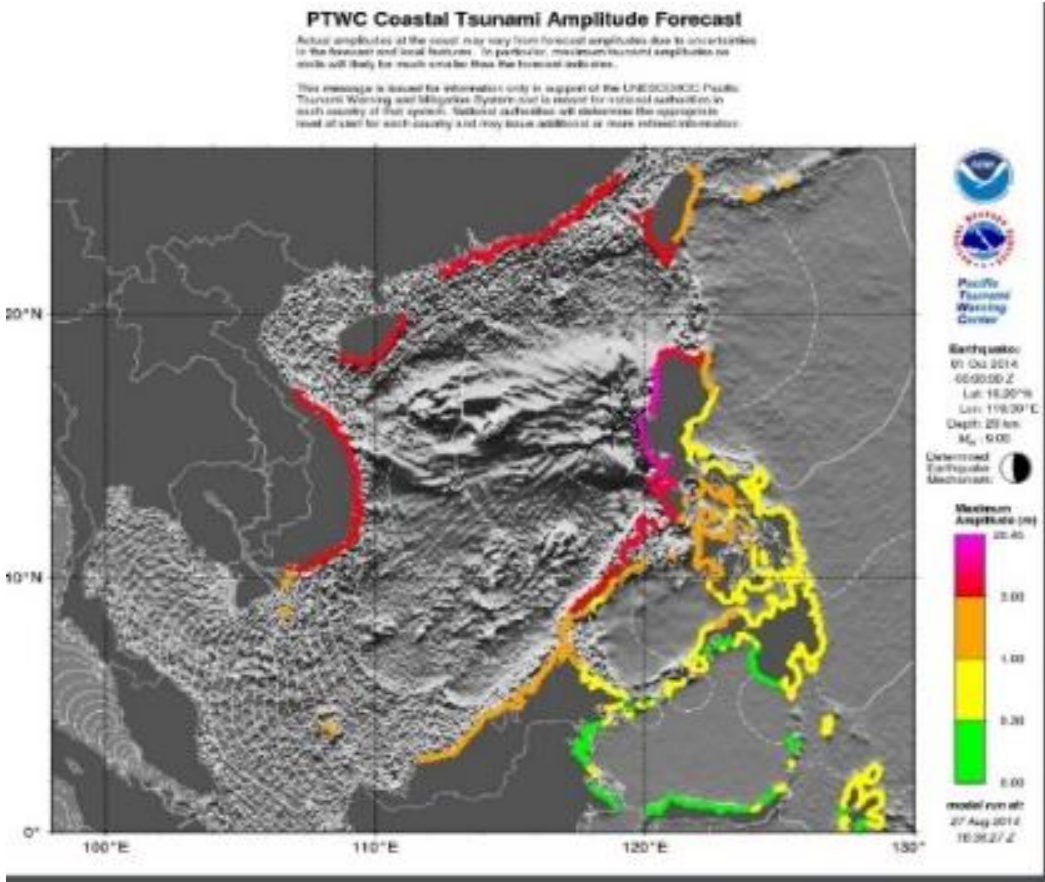
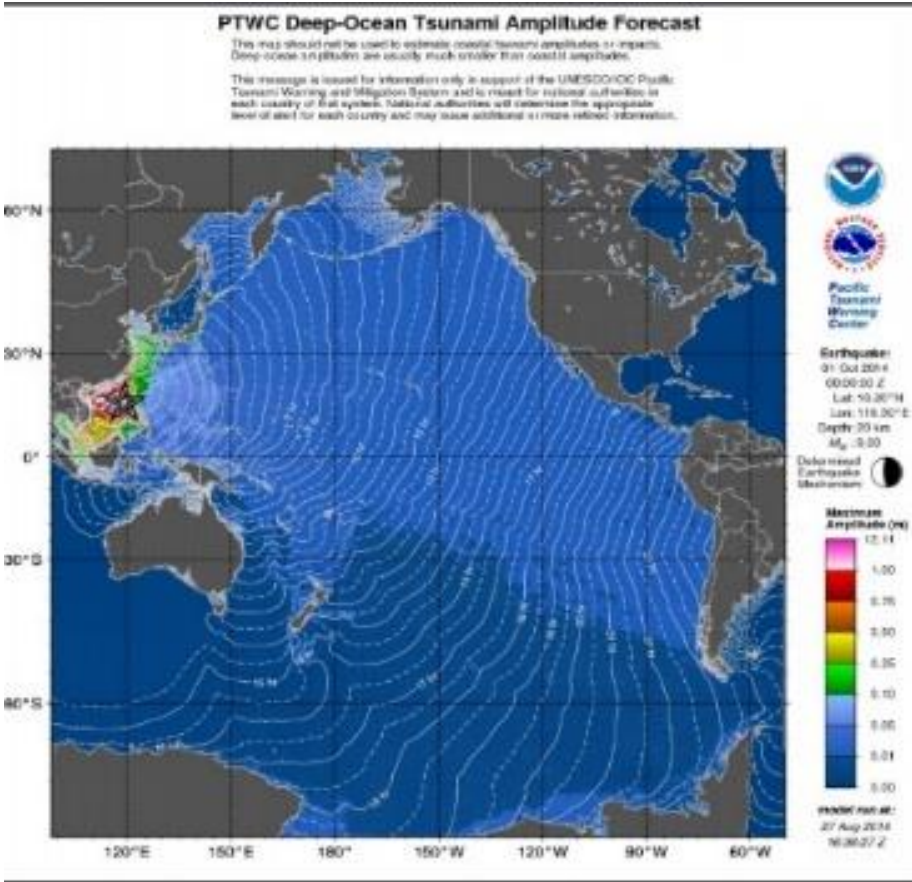
Northwest Pacific Tsunami  
Advisory Center  
(NWPTAC)

**** NOTICE **** NOTICE **** NOTICE **** NOTICE **** NOTICE ****
THIS MESSAGE IS ISSUED FOR INFORMATION ONLY IN SUPPORT OF THE UNESCO/IOC PACIFIC TSUNAMI WARNING AND MITIGATION SYSTEM AND IS MEANT FOR NATIONAL AUTHORITIES IN EACH COUNTRY OF THAT SYSTEM.
NATIONAL AUTHORITIES WILL DETERMINE THE APPROPRIATE LEVEL OF ALERT FOR EACH COUNTRY AND MAY ISSUE ADDITIONAL OR MORE REFINED INFORMATION.
**** NOTICE **** NOTICE **** NOTICE **** NOTICE **** NOTICE ****
THE TSUNAMI FORECAST IS UPDATED IN THIS MESSAGE.
PRELIMINARY EARTHQUAKE PARAMETERS -----  * MAGNITUDE        7.6 * ORIGIN TIME      1415 UTC DEC 8 2025 * COORDINATES      41.0 NORTH 142.3 EAST * DEPTH            51 KM / 32 MILES * LOCATION        HOKKAIDO JAPAN REGION
EVALUATION -----  * AN EARTHQUAKE WITH A PRELIMINARY MAGNITUDE OF 7.6 OCCURRED IN THE HOKKAIDO, JAPAN REGION AT 1415 UTC ON MONDAY DECEMBER 8 2025.

Pacific Tsunami Warning Center  
(PTWC)



2. **GRAPHICAL PRODUCT** – tsunami propagation, energy release, maximum amplitudes that may be useful in decision making These products will be received after the text products in the event of a Tsunami Warning.



---

# PHILIPPINE TSUNAMI INFORMATION

---

● ● ● ● ●

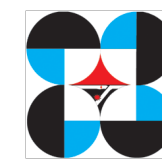
PHILIPPINE TSUNAMI INFORMATION

Tsunami Information	Threat to the Philippines	Recommended Action for Affected Places
No Tsunami Threat	<p>A Large earthquake is generated but either:</p> <p>(1) there is no tsunami generated by this event or</p> <p>(2) a tsunami was generated but will not reach the Philippines</p>	<p><b>No evacuation needed.</b></p> <p>The advisory is issued for information purposes only.</p>
Sea Level Change Monitoring	<p><b>PHIVOLCS will monitor sea level changes and provide updates</b></p>	<p><b>No evacuation order is in effect.</b></p> <p>Public is advised to wait and listen for updates.</p>
Minor Sea Level Disturbance	<p><b>Minor sea level disturbance is expected</b> in some coastal areas with wave heights of less than one (1) meter above the expected ocean tides.</p>	<p>People are advised to <b>stay away from the beach and not to go to the coast.</b></p> <p>People whose houses are located very near the shoreline are advised <b>to move farther inland.</b></p> <p>Owners of boats in harbors, estuaries or shallow coastal waters of the affected provinces should secure their boats and move away from the waterfront.</p> <p>Boats already at sea are advised to stay offshore in deep waters until further notified.</p>
Tsunami Warning	<p><b>Destructive tsunami was generated with life threatening wave heights.</b></p> <p>(A destructive tsunami is expected to arrive in the Philippines with wave heights greater than one (1) meter above the expected ocean tides.)</p>	<p><b>Immediate evacuations</b> of coastal communities that may be affected are strongly advised.</p> <p>Owners of boats in harbors, estuaries or shallow coastal waters of the affected provinces should secure their boats and move away from the waterfront.</p> <p>Boats already at sea are advised to stay offshore in deep waters until further notified.</p>

# PHILIPPINE TSUNAMI INFORMATION

Tsunami Information	Threat to the Philippines	Recommended Action for Affected Places
No Tsunami Threat	<p>A Large earthquake is generated but either:</p> <p>(1) there is no tsunami generated by this event or</p> <p>(2) a tsunami was generated but will not reach the Philippines</p>	<p><b>No evacuation needed.</b></p> <p>The advisory is issued for information purposes only.</p>





**TSUNAMI INFORMATION NO. 1**  
**NO TSUNAMI THREAT**  
No tsunami threat to the Philippines from this earthquake.

**PRELIMINARY EARTHQUAKE PARAMETERS**

Date and Time : 08 Dec 2025 - 10:15:00 PM  
Location : 41.0°N, 142.3°E - Hokkaido Japan Region  
Depth (km) : 051  
Magnitude : 7.6

**EVALUATION**

Hazardous tsunami waves are possible for coasts located within 1000 km of the earthquake epicenter.

This is for information purposes only and there is no tsunami threat to the Philippines from this earthquake.

**RECOMMENDED ACTION**

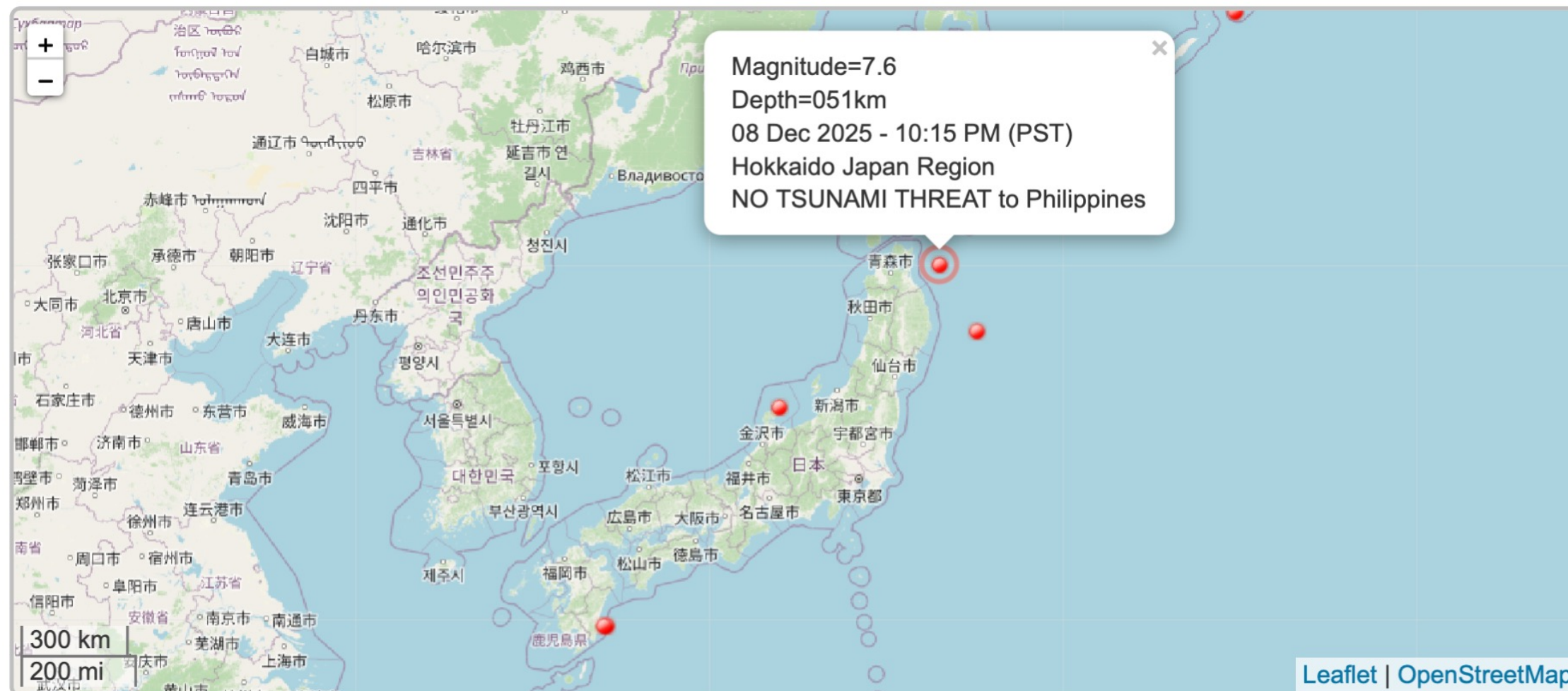
No action required.

Issued on: 08 Dec 2025 - 10:31:18 PM  
Issued by: KMG/JJBF/IBNP/MAMG

**IMPORTANT**

This will be the only tsunami information issued unless additional information becomes available. Always refer to the latest tsunami information posted at the PHIVOLCS official website (<https://www.phivolcs.dost.gov.ph/>).

**PHIVOLCS TSUNAMI INFORMATION**



Latest Earthquake Event Earthquake Events for the year

# PHILIPPINE TSUNAMI INFORMATION

Tsunami Information	Threat to the Philippines	Recommended Action for Affected Places
Sea Level Change Monitoring	PHIVOLCS will monitor sea level changes and provide updates	No evacuation order is in effect.  Public is advised to wait and listen for updates.



TSUNAMI INFORMATION NO. 1  
**SEA-LEVEL CHANGE MONITORING**  
People are advised to wait for further updates.

**PRELIMINARY EARTHQUAKE PARAMETERS**

Date and Time : 29 Jul 2021 - 02:15:47 PM  
Location : 55.5°N,157.9°W - 60 Miles Se Of Chignik, Alaska  
Depth (km) : 018  
Magnitude : 8.1

**EVALUATION**

An earthquake of this size has the potential to generate a destructive tsunami that can strike coastlines in the region near the epicenter within minutes to hours.

**RECOMMENDED ACTION**

**NO EVACUATION IS IN ORDER.** Coastal communities of the following provinces are advised to **WAIT AND WATCH FOR UPDATES.**

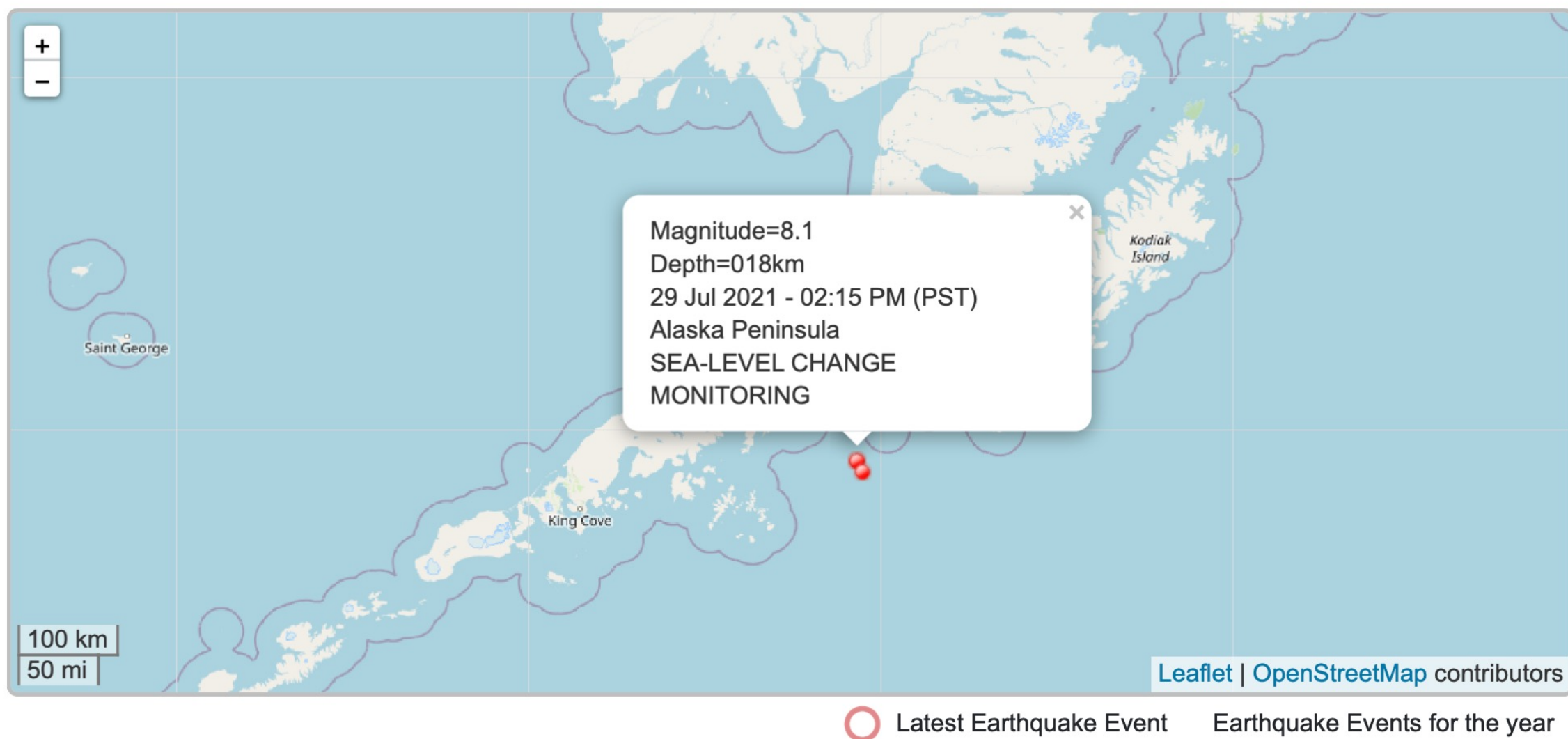
Batanes Group of Islands	Albay	Surigao del Sur
Cagayan	Catanduanes	Davao Oriental
Ilocos Norte	Sorsogon	Davao De Oro
Isabela	Eastern Samar	Davao del Norte
Quezon	Northern Samar	Davao del Sur
Aurora	Leyte	Davao Occidental
Camarines Norte	Southern Leyte	
Camarines Sur	Surigao del Norte	

Issued on: 29 Jul 2021 - 03:37:57 PM  
Issued by: RJP/REG/ALTDS/JAB

**IMPORTANT**

This will be the only tsunami information issued unless additional information becomes available. Always refer to the latest tsunami information posted at the PHIVOLCS official website (<https://www.phivolcs.dost.gov.ph/>).

**2021 PHIVOLCS TSUNAMI INFORMATION**



# PHILIPPINE TSUNAMI INFORMATION

Tsunami Information	Threat to the Philippines	Recommended Action for Affected Places
Minor Sea Level Disturbance	Minor sea level disturbance is expected in some coastal areas with wave heights of less than one (1) meter above the expected ocean tides.	<p>People are advised to <b>stay away from the beach and not to go to the coast.</b></p> <p>People whose houses are located very near the shoreline are advised <b>to move farther inland.</b></p> <p>Owners of boats in harbors, estuaries or shallow coastal waters of the affected provinces should secure their boats and move away from the waterfront.</p> <p>Boats already at sea are advised to stay offshore in deep waters until further notified.</p>





TSUNAMI INFORMATION NO. 1  
**MINOR SEA-LEVEL DISTURBANCE**  
Strong currents and rapid changes of seawater level are expected.

**PRELIMINARY EARTHQUAKE PARAMETERS**

Date and Time : 30 Sep 2025 - 09:59:45 PM  
Location : 11.13°N, 124.18°E - Offshore Cebu  
Depth (km) : 010  
Magnitude : 6.7

**RECOMMENDED ACTION**

The concerned public is advised to be on alert for unusual waves. People are advised to **STAY AWAY FROM THE BEACH AND NOT TO GO TO THE COAST** of the following provinces until the cancellation of this advisory:

Leyte Cebu Biliran

People whose houses are located very near the shoreline of these provinces are advised to **MOVE FARTHER INLAND.**

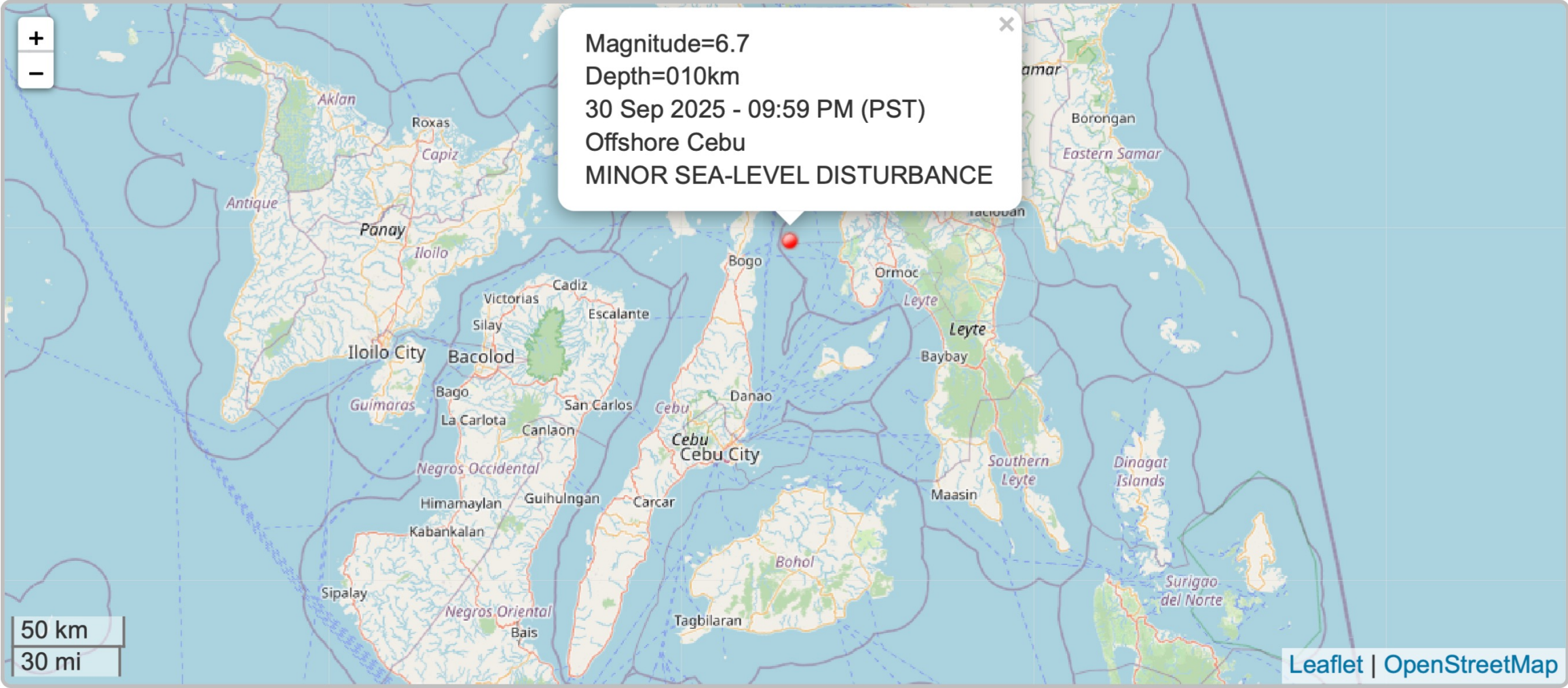
Owners of boats in harbors, estuaries or shallow coastal water of the above-mentioned provinces should secure their boats and move away from the waterfront. Boats already at sea during this period should stay offshore in deep waters until further advised.

Issued on: 30 Sep 2025 - 10:32:09 PM  
Issued by: GBD/CNDA/KMG

**IMPORTANT**

This will be the only tsunami information issued unless additional information becomes available. Always refer to the latest tsunami information posted at the PHIVOLCS official website (<https://www.phivolcs.dost.gov.ph/>).

**PHIVOLCS TSUNAMI INFORMATION**



Latest Earthquake Event Earthquake Events for the year

# PHILIPPINE TSUNAMI INFORMATION

Tsunami Information	Threat to the Philippines	Recommended Action for Affected Places
<b>Tsunami Warning</b>	<p><b>Destructive tsunami was generated with life threatening wave heights.</b></p> <p>(A destructive tsunami is expected to arrive in the Philippines with wave heights greater than one (1) meter above the expected ocean tides.)</p>	<p><b>Immediate evacuations</b> of coastal communities that may be affected are strongly advised.</p> <p>Owners of boats in harbors, estuaries or shallow coastal waters of the affected provinces should secure their boats and move away from the waterfront.</p> <p>Boats already at sea are advised to stay offshore in deep waters until further notified.</p>





TSUNAMI INFORMATION NO. 1  
**TSUNAMI WARNING**

Destructive tsunami is expected with life threatening wave heights.

**PRELIMINARY EARTHQUAKE PARAMETERS**

Date and Time : 10 Oct 2025 - 09:43:54 AM  
Location : 07.07°N, 127.06°E - Offshore Davao Oriental  
Depth (km) : 010  
Magnitude : 7.6

**EVALUATION**

Based on the local tsunami scenario database, it is expected to experience wave heights of more than one meter above the normal tides and may be higher on enclosed bays and straits.

It is forecasted that the first tsunami waves will arrive between **09:43:54 to 11:43:54, 10 Oct 2025** (PST). These waves may continue for hours.

**RECOMMENDED ACTION**

The people in the coastal areas of the following provinces are **STRONGLY ADVISED TO IMMEDIATELY EVACUATE to higher grounds or move farther inland.**

Eastern Samar  
Dinagat Islands  
Davao Oriental

Southern Leyte  
Surigao Del Norte

Leyte  
Surigao Del Sur

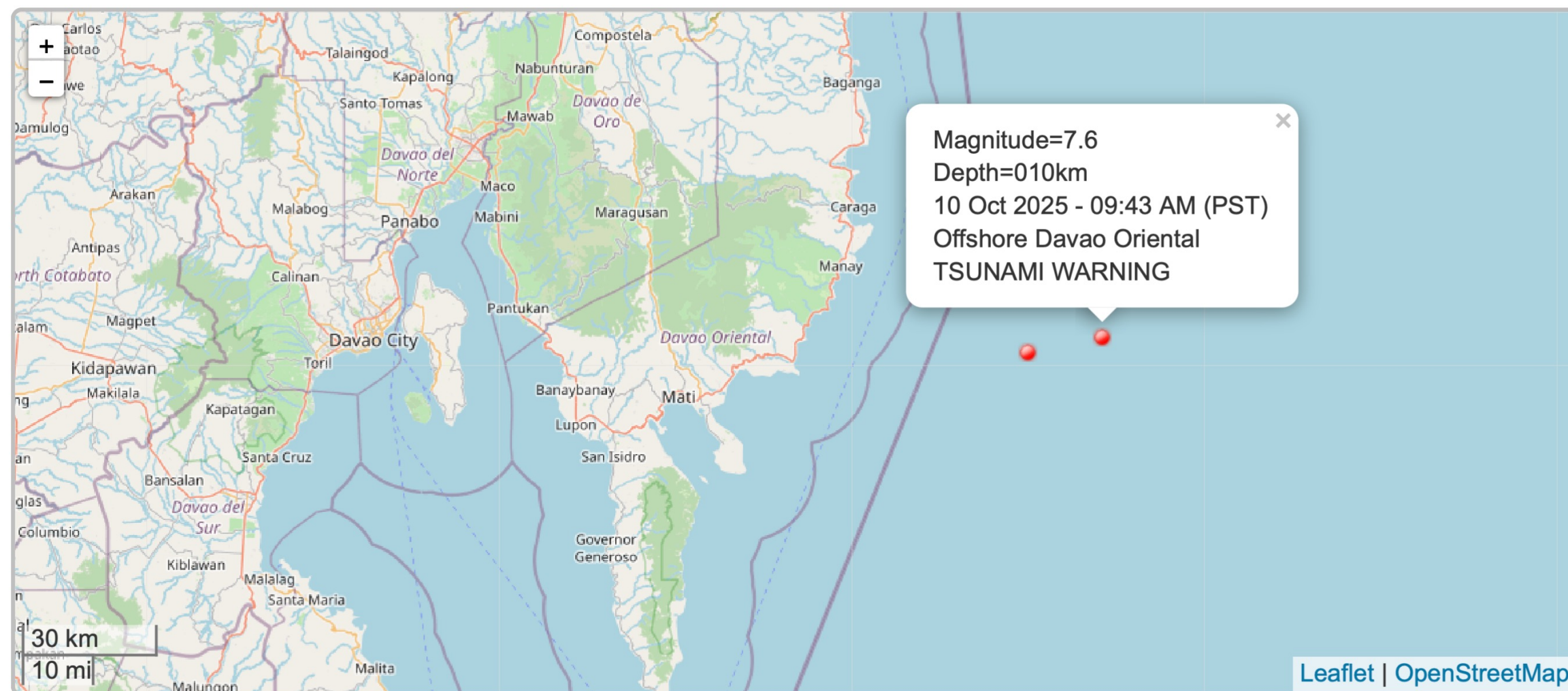
Owners of boats in harbors, estuaries or shallow coastal water of the above-mentioned provinces should secure their boats and move away from the waterfront. Boats already at sea during this period should stay offshore in deep waters until further advised.

Issued on: 10 Oct 2025 - 09:53:44 AM  
Issued by: MLAJ/JPD/ALTDS/CE

**IMPORTANT**

This will be the only tsunami information issued unless additional information becomes available. Always refer to the latest tsunami information posted at the PHIVOLCS official website (<https://www.phivolcs.dost.gov.ph/>).

**PHIVOLCS TSUNAMI INFORMATION**



Latest Earthquake Event



Earthquake Events for the year

---

# Cancellation of Tsunami Information

---

● ● ● ● ●

**CRITERIA FOR CANCELLATION OF TSUNAMI INFORMATION**

This table shows criteria for the issuance of PHIVOLCS cancellation of Tsunami Advisories.

Latest Tsunami Info	Scenario	Recommended Action	Template
Minor Sea-Level/ Tsunami Warning	Tsunami is observed.	<b>For Distant events:</b> Wait for ITWC to issue a cancellation bulletin and wait for two hours before cancellation.	<b>Cancellation Template</b>
		<b>For local events:</b> PHIVOLCS will decide when to cancel the tsunami warning.	
	No tsunami is observed at forecasted arrival time.	Wait for <b>two hours</b> , then issue a cancellation information	

---

# How do we estimate tsunami height and arrival time?

DECISION SUPPORT TOOLS for Local Tsunami

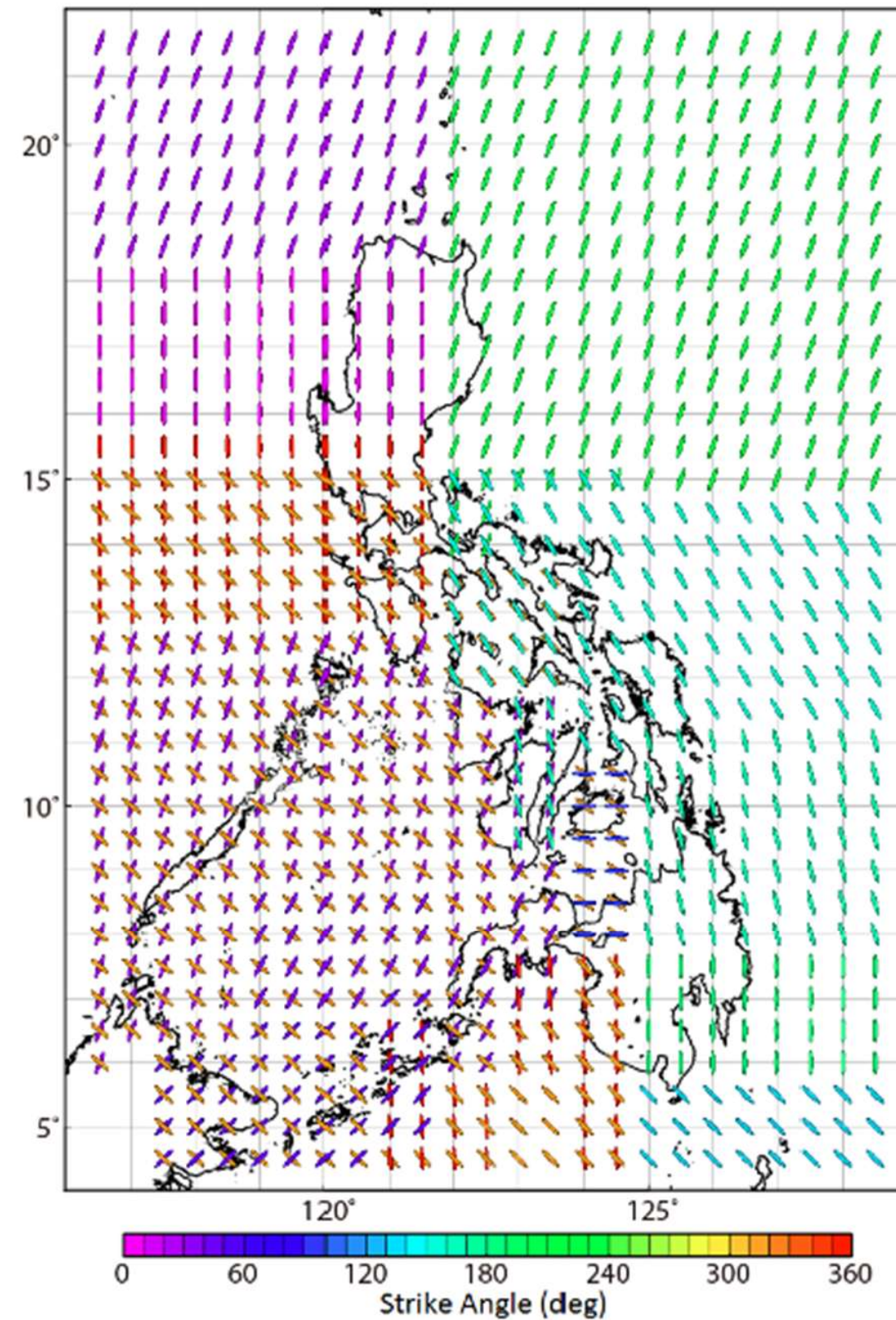
---



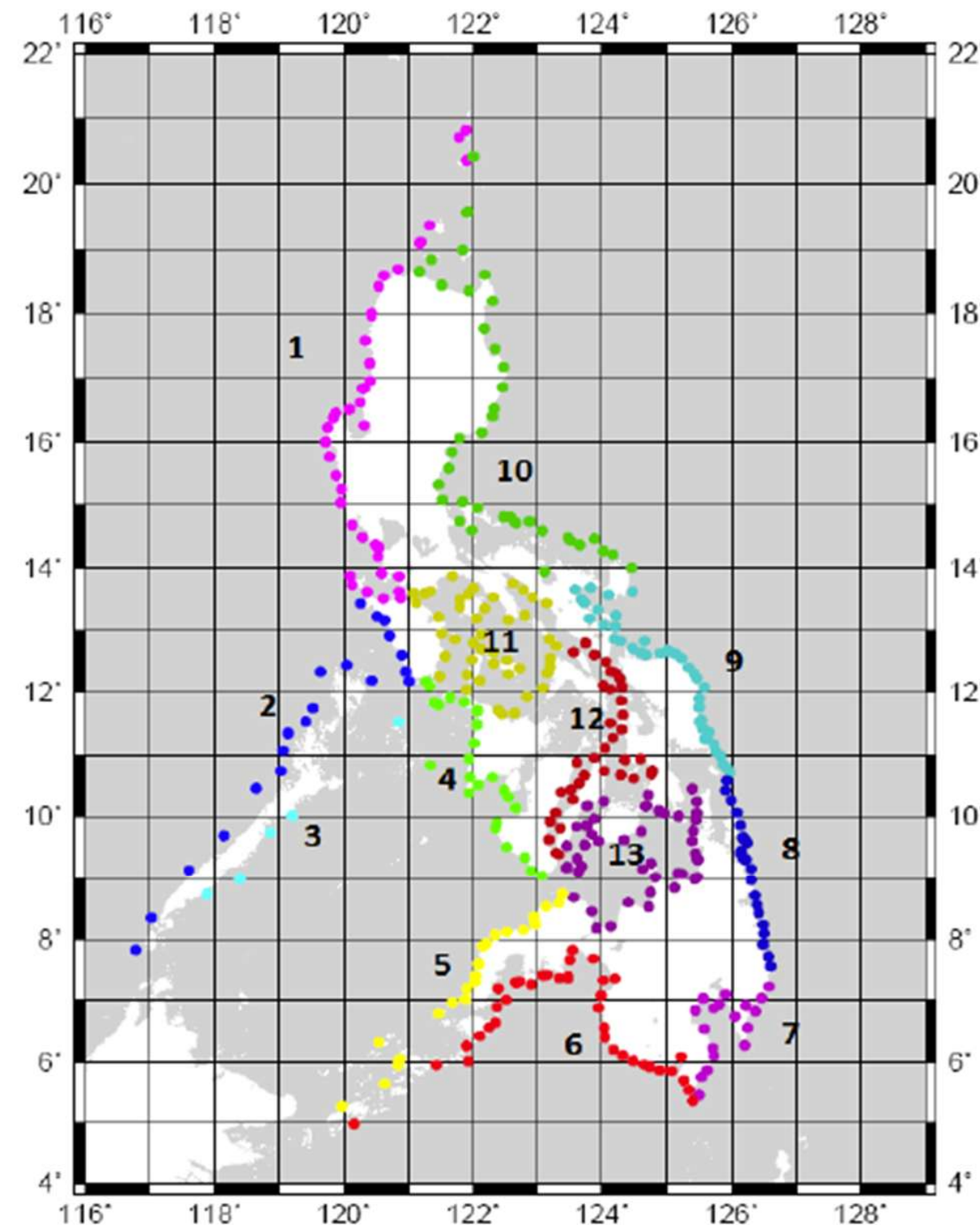


# Tsunami Simulation Database for the Warning System in the Philippines

- DOST-PHIVOLCS built a nationwide tsunami simulation database with Japan Meteorological Agency (JMA) through SATREPS project (2012–2014) (PHIVOLCS members: Ms. Joan Salcedo, Vilma Grenan, Ishmael Narag, and Bartolome Bautista)
- Simulated and stored over 30,000 local-tsunami scenarios by July 2014
- Basis for PHIVOLCS tsunami warnings



STRIKE of Scenario Fault



Distribution of FPs and Area setting

\*FP = forecast points



Web application to search the database using real-time earthquake information

# Tsunami database search

## Earthquake Paramaters

Latitude

deg

Longitude

deg

Depth

km

Magnitude

search

### Search Condition

Latitude

11.10

Longitude

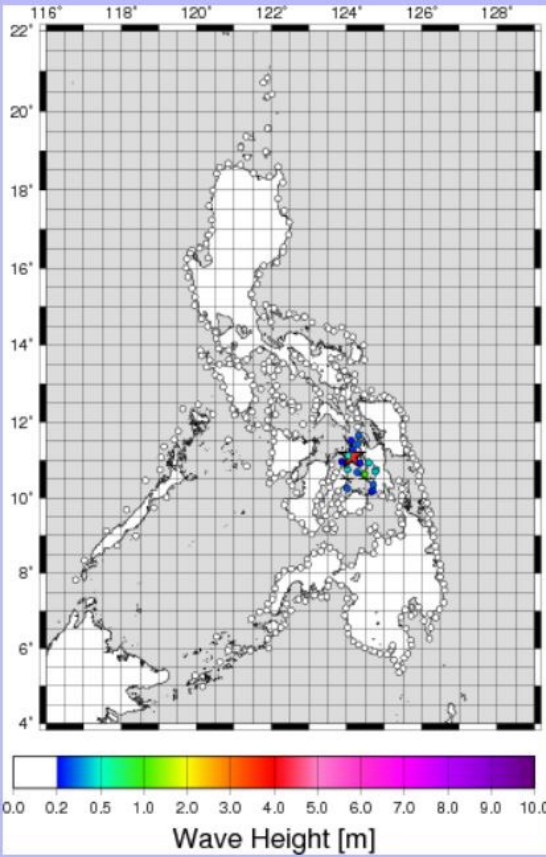
124.14

Depth

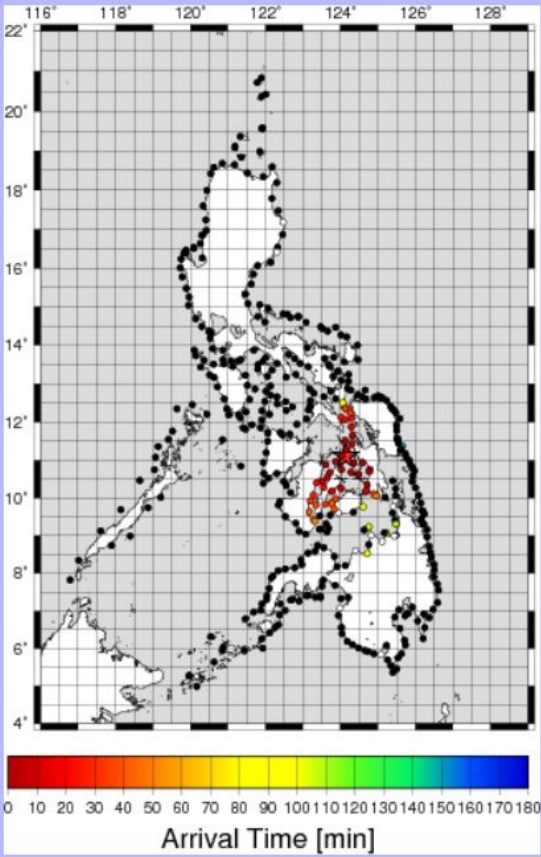
5

Magnitude

6.9



PDF



PDF

### SUMMARY

Region Number	Maximum Height (m)		Earliest Arrival Time (min)	
	Value	FP	Value	FP
1	0.03	1	N/A	NONE
2	0.04	43	N/A	NONE
3	0.04	64	N/A	NONE
4	0.04	92	N/A	NONE
5	0.03	93	N/A	NONE
6	0.05	139	237.9	149
7	0.05	169	N/A	NONE
8	0.04	193	N/A	NONE
9	0.05	201	150.0	204
10	0.05	260	215.8	263
11	0.02	295	N/A	NONE
12	1.00	340	0.1	332
13	0.32	357	0.2	357

REGION 1 Max. Height =0.03 m FP=1

FP Number	Maximum Height (m)	Arrival Time (min)
1	0.03	N/A
2	0.03	N/A

★: epicenter  
/: assumed faults selected for this search condition

Republic of the Philippines

DEPARTMENT OF SCIENCE AND TECHNOLOGY

PHILIPPINE INSTITUTE OF VOLCANOLOGY AND SEISMOLOGY

TSUNAMI INFORMATION NO. 1

NO TSUNAMI THREAT

No tsunami threat to the Philippines from this earthquake.

PRELIMINARY EARTHQUAKE PARAMETERS

Date and Time : 09 Nov 2025 - 04:04:00 PM

Location : 39.4°N, 143.5°E - Off The East Coast Of Honshu Japan

Depth (km) : 010

Magnitude : 6.7

EVALUATION

No destructive tsunami threat exists based on available data. This is for information purposes only and there is no tsunami threat to the Philippines from this earthquake.

RECOMMENDED ACTION

No action required.

Issued on: 09 Nov 2025 - 04:25:14 PM

Issued by: MAHG/DVC/GBIE/KRVPPS

IMPORTANT

This will be the only tsunami information issued unless additional information becomes available. Always refer to the latest tsunami information posted at the PHIVOLCS official website (<https://www.dtrcm.dost.gov.ph/>)

Republic of the Philippines

Department of Science and Technology

PHILIPPINE INSTITUTE OF VOLCANOLOGY AND SEISMOLOGY

TSUNAMI INFORMATION NO. (Number)

SEA-LEVEL CHANGE MONITORING

People are advised to wait for further updates.

PRELIMINARY EARTHQUAKE PARAMETERS

Date and Time : (Date/Time of Event)

Location : (Location of Event)

Depth (km) : (Depth of Event)

Magnitude : (Magnitude of Event)

EVALUATION

An earthquake of this size has the potential to generate a destructive tsunami that can strike coastlines in the region near the epicenter within minutes to hours.

RECOMMENDED ACTION

NO EVACUATION IS IN ORDER.

Coastal communities of the following provinces are advised to **WAIT AND LISTEN FOR UPDATES.**

Province 1

Province 2

Province 3

Province 4

Province 5

Province 6

Province 7

Province 8

Province 9

Province 10

Province 11

Province 12

Province 13

Province 14

Province 15

Issued on: (Date Issued)

Issued by: (Initials)

IMPORTANT

This will be the only tsunami information issued unless additional information becomes available. Always refer to the latest tsunami information posted at the PHIVOLCS official website (<https://www.dtrcm.dost.gov.ph/>)

Republic of the Philippines

DEPARTMENT OF SCIENCE AND TECHNOLOGY

PHILIPPINE INSTITUTE OF VOLCANOLOGY AND SEISMOLOGY

TSUNAMI INFORMATION NO. 2

ADVISORY: MINOR SEA-LEVEL DISTURBANCE

PRELIMINARY EARTHQUAKE PARAMETERS

Date and Time : 30 Jul 2025 - 07:25:00 AM

Location : 52.2°N, 160.0°E - Off The East Coast Of Kamchatka, Russia

Depth (km) : 074

Magnitude : 8.7

EVALUATION

Based on the revised magnitude calculations and tsunami wave models in the Pacific Tsunami Warning Center, coastal areas in the Philippines fronting the Pacific ocean are expected to experience tsunami wave height of less than one (1) meter. The first tsunami waves are expected to arrive between **01:20 PM to 02:40 PM, 30 Jul 2025 (PST)**. It may not be the largest and these waves may continue for hours.

RECOMMENDED ACTION

The concerned public is advised to be on alert for unusual waves. People are also advised to **STAY AWAY FROM THE BEACH AND NOT TO GO TO THE COAST** of the following provinces until the cancellation of this advisory:

Batanes Group of Islands

Cagayan

Isabela

Aurora

Quezon

Camarines Norte

Camarines Sur

Albay

Sorsogon

Catanduanes

Northern Samar

Eastern Samar

Leyte

Southern Leyte

Dinagat Islands

Surigao del Norte

Surigao del Sur

Davao del Norte

Davao del Sur

Davao Occidental

Davao de Oro

Issued on: 30 Jul 2025 - 09:22:38 AM

Issued by: KMG/JML/NBA/DVC

IMPORTANT

This will be the only tsunami information issued unless additional information becomes available. Always refer to the latest tsunami information posted at the PHIVOLCS official website (<https://www.dtrcm.dost.gov.ph/>)

Republic of the Philippines

DEPARTMENT OF SCIENCE AND TECHNOLOGY

PHILIPPINE INSTITUTE OF VOLCANOLOGY AND SEISMOLOGY

TSUNAMI INFORMATION NO. 1

TSUNAMI WARNING

Destructive tsunami is expected with life threatening wave heights.

PRELIMINARY EARTHQUAKE PARAMETERS

Date and Time : 10 Oct 2025 - 09:43:54 AM

Location : 07.07°N, 127.06°E - Offshore Davao Oriental

Depth (km) : 010

Magnitude : 7.6

EVALUATION

Based on the local tsunami scenario database, it is expected to experience wave heights of more than one meter above the normal tides and may be higher on enclosed bays and straits.  
It is forecasted that the first tsunami waves will arrive between **09:43:54 to 11:43:54, 10 Oct 2025 (PST)**. These waves may continue for hours.

RECOMMENDED ACTION

The people in the coastal areas of the following provinces are **STRONGLY ADVISED TO IMMEDIATELY EVACUATE** to higher grounds or move farther inland.

Eastern Samar

Dinagat Islands

Davao Oriental

Southern Leyte

Surigao Del Norte

Leyte

Surigao Del Sur

Issued on: 10 Oct 2025 - 09:53:44 AM

Issued by: MLAJJPD/ALTD/SC

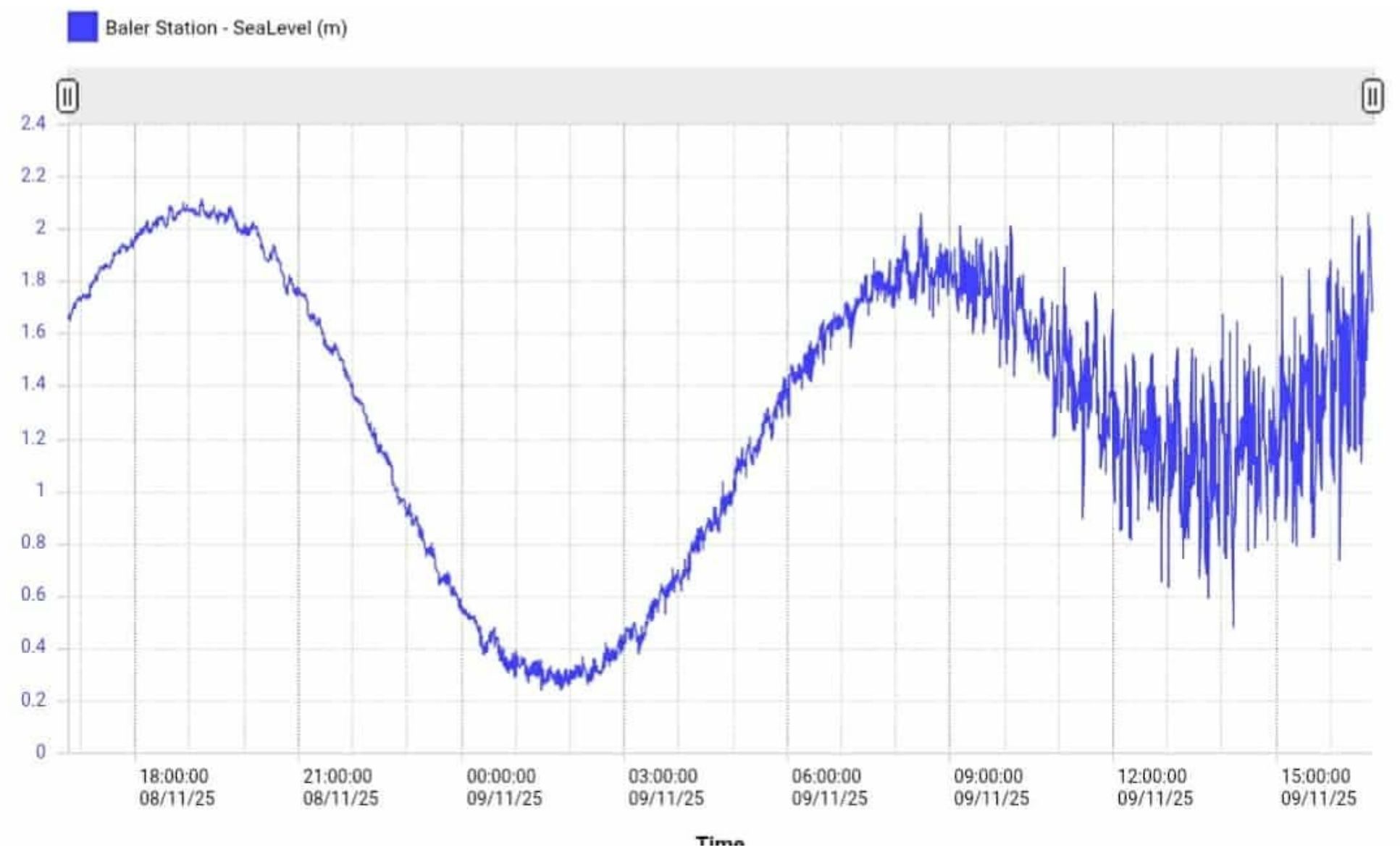
IMPORTANT

This will be the only tsunami information issued unless additional information becomes available. Always refer to the latest tsunami information posted at the PHIVOLCS official website (<https://www.dtrcm.dost.gov.ph/>)





**DOST-PHIVOLCS Sea-level Monitoring Station  
(Nasugbu, Batangas)**



**Sea-level monitoring station record  
(Baler, Aurora)**



# Our Clear and Present Danger: Destructive Local Tsunamis

- May mga baybayin sa Pilipinas na maaaring marating ng unang Tsunami wave sa loob ng **2** hanggang **5** minuto matapos ang lindol
- **Walang sapat na panahon para sa babala.**
- Use the natural tsunami warning signs

*Alam mo ba?*

### Tsunami sa Pilipinas

#### LOKAL NA TSUNAMI (LOCALLY-GENERATED TSUNAMIS)



Magmumula sa mga karagatan sa paligid ng Pilipinas. Ang unang tsunami ay **makararating sa pinakamalapit na baybayin mula sa episentro ng lindol sa loob ng 2 hanggang 5 minuto matapos ang lindol.**



Walang sapat na panahon para sa babala. Agad na **LUMIKAS** patungo sa mataas na lugar o papalayo sa dagat!

*Makilahok sa*  
**WORLD TSUNAMI AWARENESS DAY**  
*tuwing* IKA-5 NG NOBYEMBRE



# Natural observations for LOCAL tsunami warning



## 1. S H A K E

Strong ground shaking



## 2. DROP

Unusual and sudden rise or fall of coastal waters



## 3. Roar

Unusual/rumbling sound of approaching wave





# Signs of Approaching Tsunamis: Know the Signs, They Can Save Lives!

## 1. S H A K E

**Strong Ground Shaking**

## 3. ROAR

**Unusual/rumbling  
sound of approaching  
wave**

## 2. DROP

**Unusual and sudden rise or fall  
of coastal waters**





*Thank you*

