

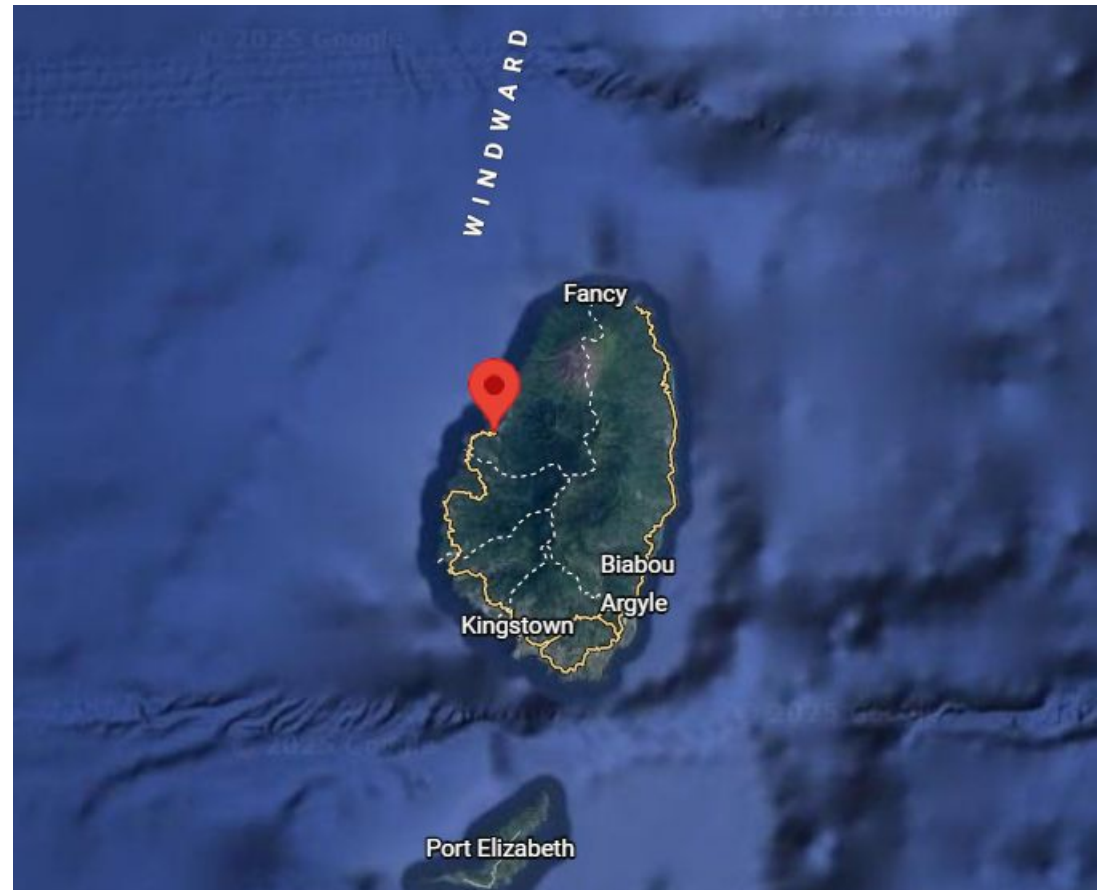
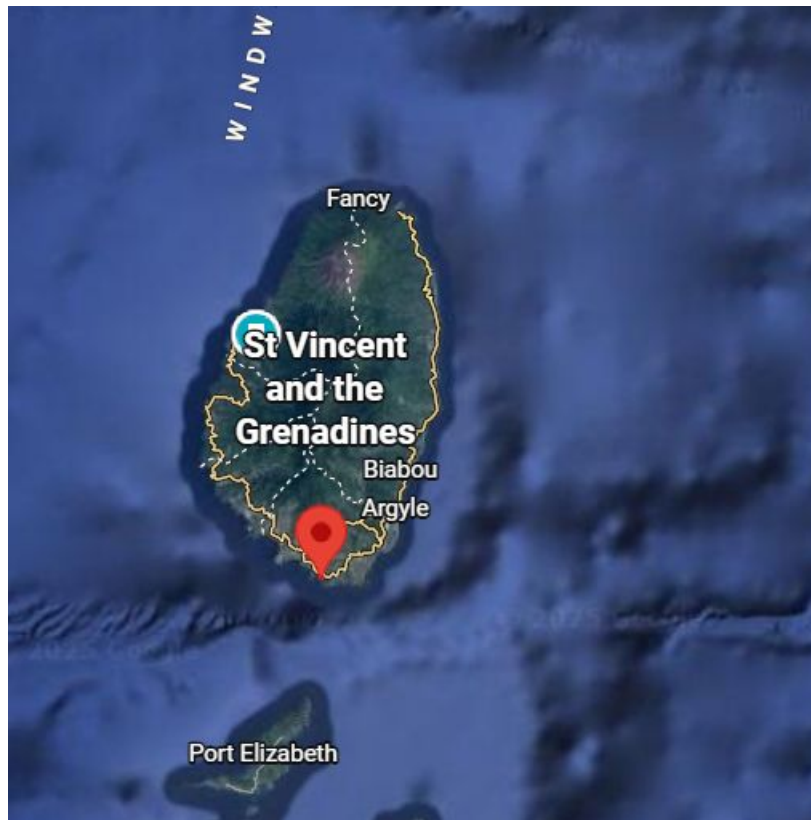
# Sea Level Operations in St Vincent

- 2 stations installed
- 2 stations operational
- Stations operated by NEMO
- Contact Person

Director / Engineer

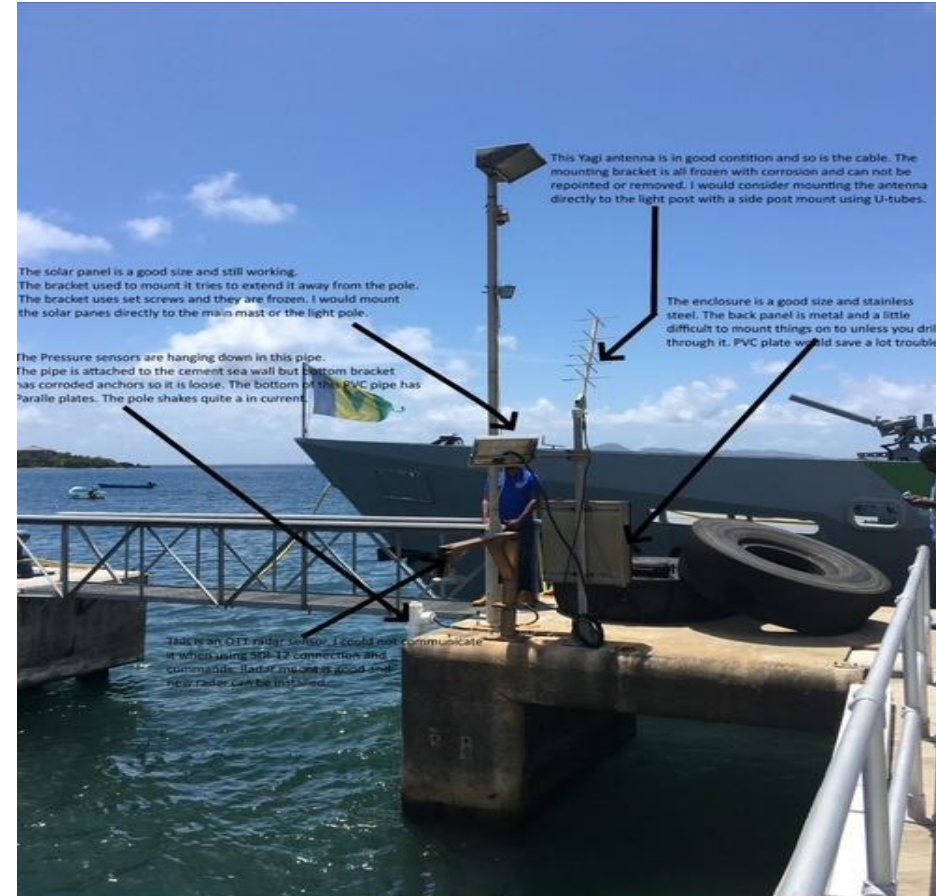
- SMU team main contact person Kemron Alexander
- Technologies used ( Radar, pressure sensors)
- Frequency of levelling and technique used (Optical level for calliquia last done in 2019)
- Weblink to data: NA

# Maps of stations



# Typical Station

- Station Name: CALQ
- Lat and Lon : 13.129912  
-61.1955
- Sensors: 2 pressure
- Sampling rate: 1 min
- Telemetry method : Satellite (GOES)
- Transmit period: 5 mins



# Typical Station

- Station Name: CHAT
- Lat and Lon: 13.2911 -61.2406
- Sensors : Radar
- Sampling rate : 1 min
- Telemetry method: GOES
- Transmit period : 5 mins



# Future Plans

- Install stations on Grenadine island

# Technology Issues

- . Training to trouble shoot and repair