

Tsunami Ready Philippines

Community-based Tsunami Preparedness Activities

South China Sea Region Tsunami Ready Related
Training Course | December 22-23, 2025



JOAN L. CRUZ-SALCEDO

Supervising Science Research Specialist

Department of Science and Technology

Philippine Institute of Volcanology and Seismology

CONTENT

BE AWARE!

BE PREPARED!

BE TSUNAMI READY!

How we co-implement

- Tsunami basics
- Why tsunami preparedness
- Why community-based
- Tsunami preparedness activities in the community

Tsunami! What to do ?

*Run away from the shore towards
higher grounds or farther inland!*



*How?
Where?
When?*

Understanding Disaster Risk



Communicating Risk

Developing Risk Information materials



Scientific Information Dissemination Thru Exhibit Development



PHIVOLCS TSUNAMI AVP Final Audio Visual Production, Documentation and Archive System



Development and Publication of PHIVOLCS DRR materials

R&D

Materials development

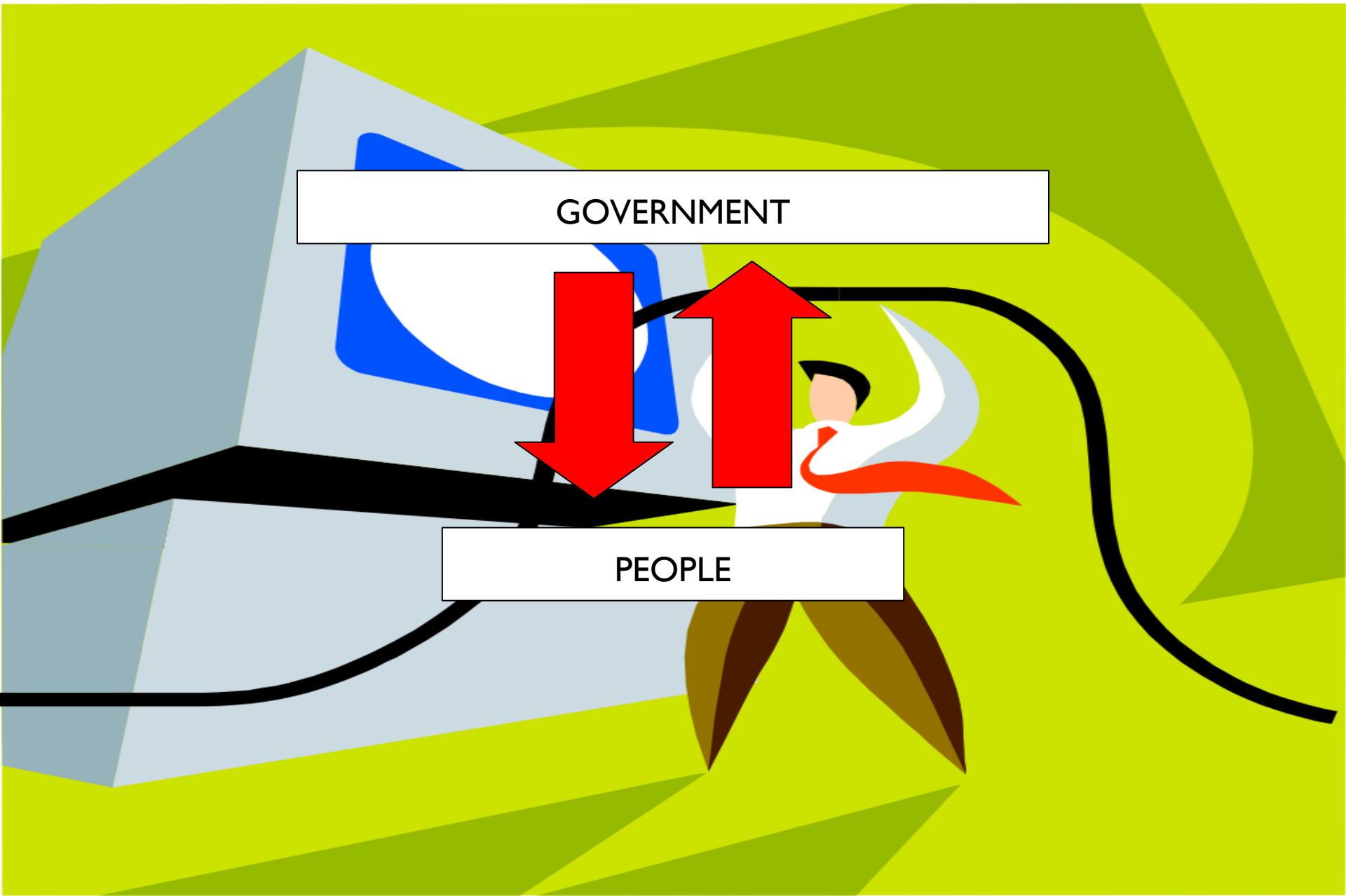
Communication

Capacity building



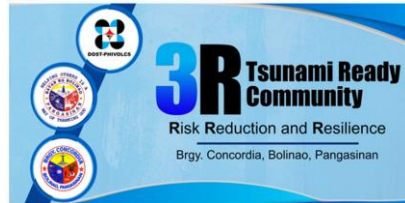
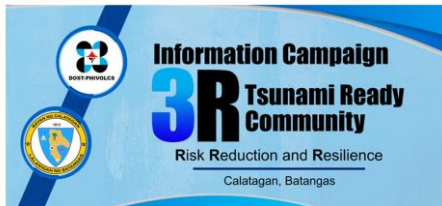
Capacitating Stakeholders

Together we can save lives...



BE AWARE!

Partnerships



Coordination Meeting for the 3R Campaign project – Tsunami Ready Community



3R Campaign Project conducted a community-level survey in all coastal barangays of Calatagan, Batangas



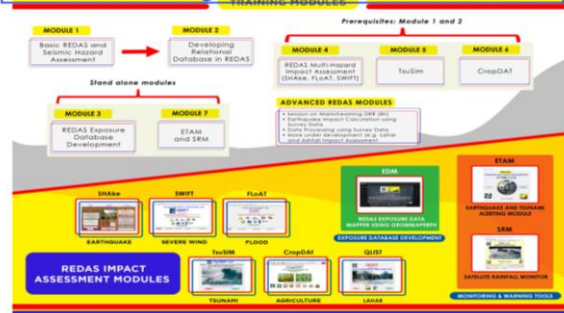
Consultations, Lectures, IECs, Workshops



I	ASSESSMENT (ASSESS)
1	ASSESS-1. Tsunami hazard zones are mapped and designated.
2	ASSESS-2. The number of people at risk in the tsunami hazard zone is estimated.
3	ASSESS-3. Economic, infrastructural, political, and social resources are identified.

Provision of tools

Hazard and Impact Assessment Software
REDAS by DOST-PHIVOLCS



REDAS TsuSIM Tsunami Simulation and Impact Module

can simulate tsunami hazard, perform simulation and animation, compute for tsunami impacts, and plot tsunami evacuation map.

The GeoRiskPH Platform

Available to Public

HazardHunterPH
GEOGRAPH

For one-stop-shop
HAZARD ASSESSMENT SERVICE

GeoAnalyticsPH
GEOGRAPH

VISUALIZATION & ANALYTICS
Development of Various Plans

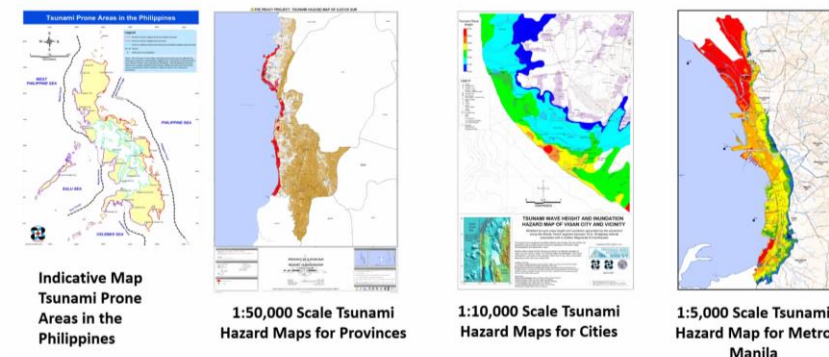
Credential-based Access

GeoMapperPH
GEOGRAPH

For the development of the **NATIONAL EXPOSURE DATABASE**
Pre- and Post-Disaster surveying

PLANSMART for Safe Schools
PLANSMART for Sustainable Human Settlements

Tsunami hazard and risk mapping



- Areas to be affected
- Elements-at-risk (exposure)

GeoAnalyticsPH

Enables analysis and visualization of the exposure of population and elements at risk to natural hazards

Generates summaries of hazards and risk assessments

Sample outputs

I	ASSESSMENT (ASSESS)
1	ASSESS-1. Tsunami hazard zones are mapped and designated.
2	ASSESS-2. The number of people at risk in the tsunami hazard zone is estimated.
3	ASSESS-3. Economic, infrastructural, political, and social resources are identified.



BE PREPARED!

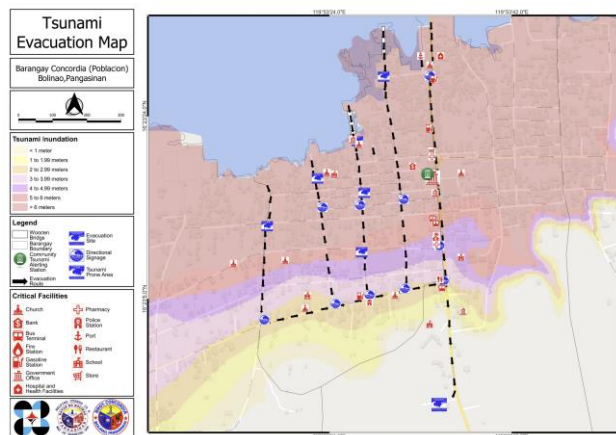
- Tsunami evacuation mapping
- Tsunami information and signage display
- Outreach and public awareness
- Community exercises

Workshops: Evacuation Planning



II PREPAREDNESS (PREP)

- 4 PREP-1. Easily understood tsunami evacuation maps are approved.
- 5 PREP-2. Tsunami information including signage is publicly displayed.



Tsunami prone



Directional signage



Evacuation area



Local languages:
Filipino
Surigaonon
Boholanon
Waray



DOST-PHIVOLCS

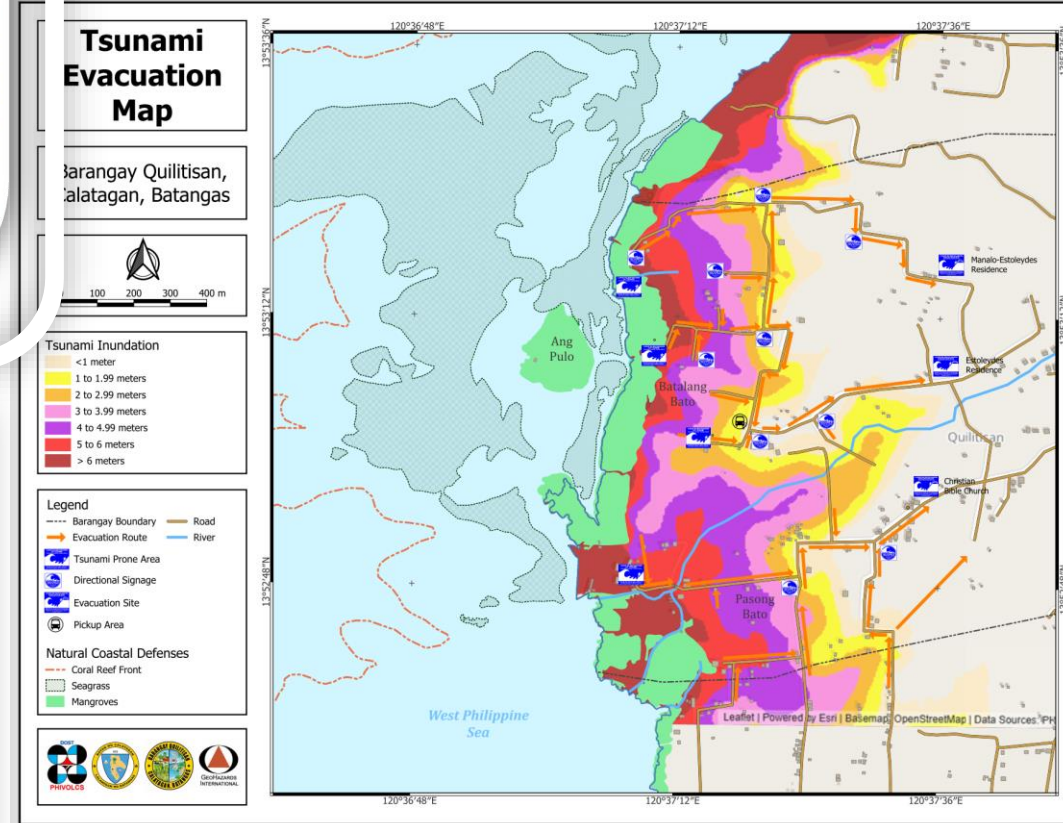
Workshops: Evacuation Planning



Validation of evacuation maps and signage locations



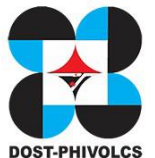
Working map for a community (Brgy Quilitisan)



II PREPAREDNESS (PREP)

- 6 PREP-3. Outreach and public awareness and education resources are available and distributed.
- 7 PREP-4. Outreach or educational activities are held at least 3 times a year.
- 8 PREP-5 A community tsunami exercise is conducted at least every 2 years

. Increase awareness on basic tsunami information





Information Campaign **3R** Tsunami Ready Community

Risk Reduction and Resilience

Brgy. Concordia, Bolinao, Pangasinan



Empowering the Next Generation



Tsunami Markers and Tsunami Catalogue



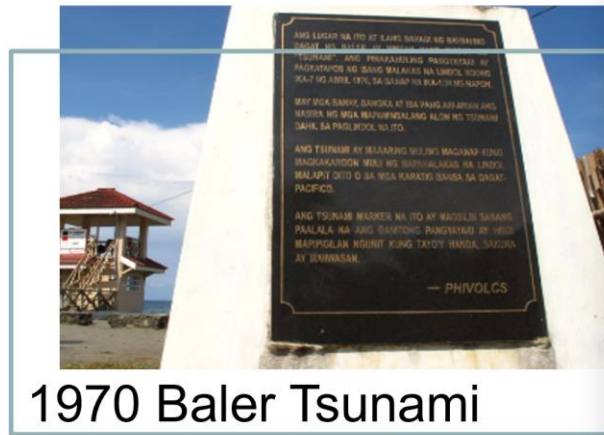
1994 Mindoro Tsunami



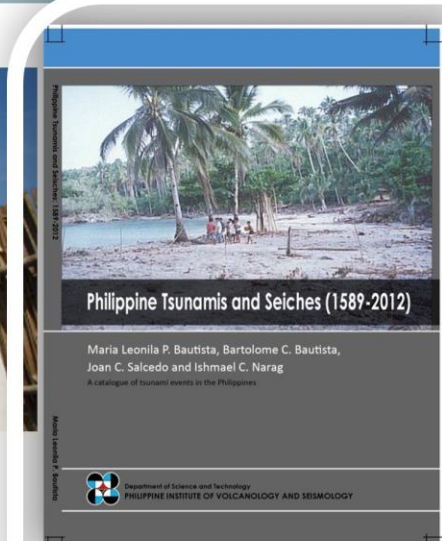
1976 Moro Gulf Tsunami



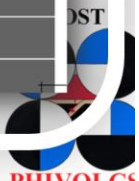
Community Tsunami Alerting Station



1970 Baler Tsunami



Tsunami Catalogue



Commemoration of the 15 November 1994 M7.1 Mindoro Earthquake and Tsunami

Poster-making Contest





WORLD TSUNAMI AWARENESS DAY

5 NOVEMBER

PHIVOLCS InfoBit

TSUNAMI-READY BA ANG KOMUNIDAD MO?

Orientation on the
UNESCO-IOC Tsunami Ready Recognition Programme (TRRP)
and UNDRR World Tsunami Awareness Day (WTAD)

OCTOBER 28, 2024 | **1:00 - 4:00 PM**

LIVE DOST-PHIVOLCS FACEBOOK

Makita-hok sa
WORLD TSUNAMI AWARENESS DAY
5 NOVEMBER

[phivolcs.dost.gov.ph](#) | [PHIVOLCS](#) | [@phivolcs_dost](#) | [DOST-PHIVOLCS](#)

CITY GOVERNMENT OF MATI | CDRMO MATI | PRC DAVAO ORIENTAL | DOST-PHIVOLCS

WORLD TSUNAMI AWARENESS DAY

5 NOVEMBER

TSUNAMI! RUN for SAFETY

5 November 2024 | Start at 5:00 AM

Start at **FGR Park** → Finish at **Baywalk, Central, City of Mati**

REGISTER NOW

Register at **Philippine Red Cross Davao Oriental Chapter**
located at Hospital Drive, Brgy. Matiao, City of Mati
Contact number: **LEAMOR TEMPLA - 09499335533**

PHP 300.00
✓ RACE BIBS AND SINGLET

5KM

WORLD TSUNAMI AWARENESS DAY

Digital-Poster Making Contest

5 November 2020



MARIANNE FAITH O. AVISO
1st PLACE
RTRMF-DVOREF, Palo, Leyte



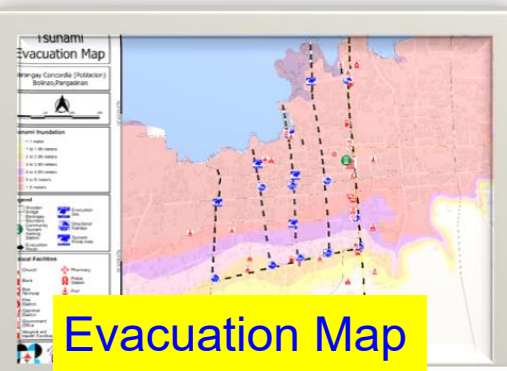
JANA PAULA V. RAMIREZ
2nd PLACE
Sto. Domingo National High School
Sto. Domingo, Albay Province



DARLENE MARIZ L. SUNGLAO
3rd PLACE
Tagbilaran City Science High School
Bohol Province



Tsunami Exercise/Drills



Evacuation Map



Trigger



Evacuations



Mangrove planting



Headcount/First Aid



Termination/Evaluation

Other activities



Signage unveiling

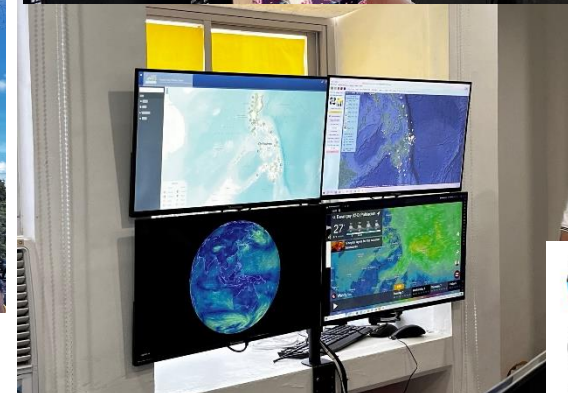
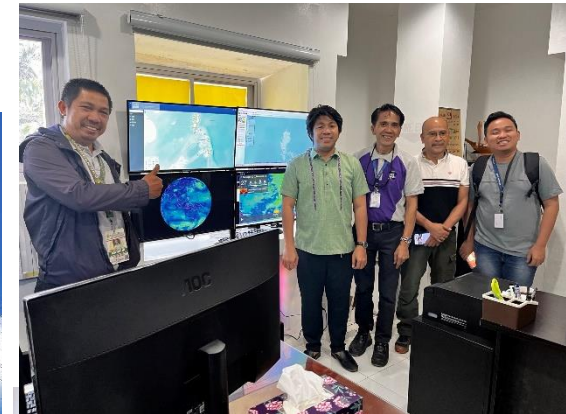
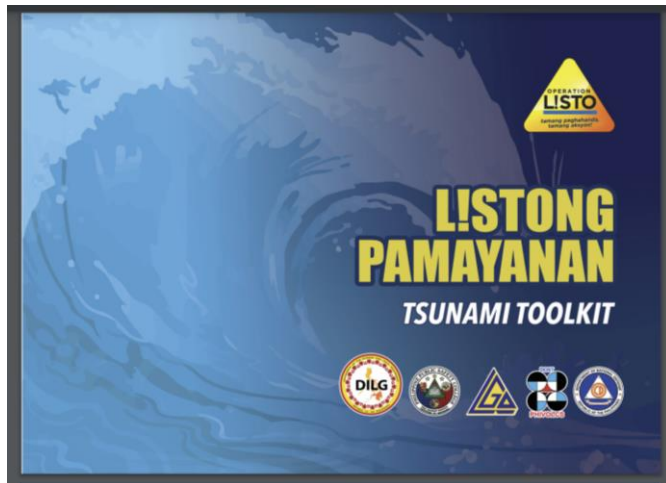
BE TSUNAMI READY!

- Response Plan
- Emergency Operations center
- Communication



III	RESPONSE (RESP)
9	RESP-1. A community tsunami emergency response plan is approved.
10	RESP-2. The capacity to manage emergency response operations during a tsunami is in place.

Assisting communities in the development of plans and establishment of EOCs



III	RESPONSE (RESP)
11	RESP-3. Redundant and reliable means to timely receive 24-hour official tsunami alerts are in place.
12	RESP-4. Redundant and reliable means to timely disseminate 24-hour official tsunami alerts to the public are in place.

Establishing a tsunami warning system

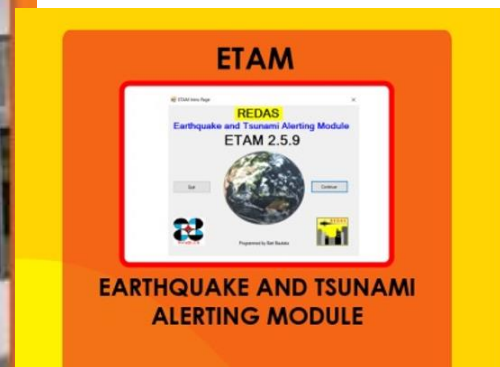
key offices and officials

equipment

appropriate warning
system scheme

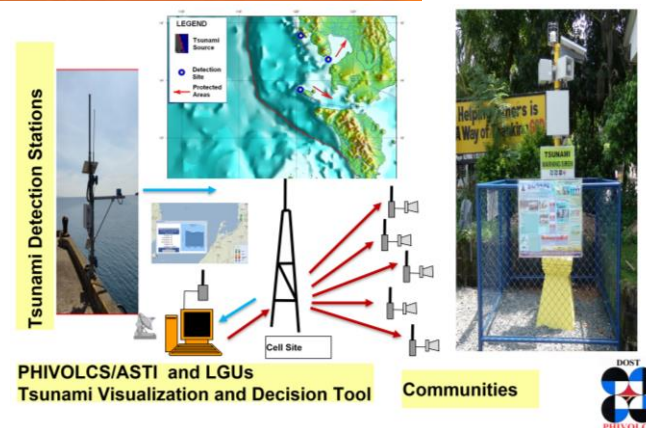
additional equipment

flow chart of information

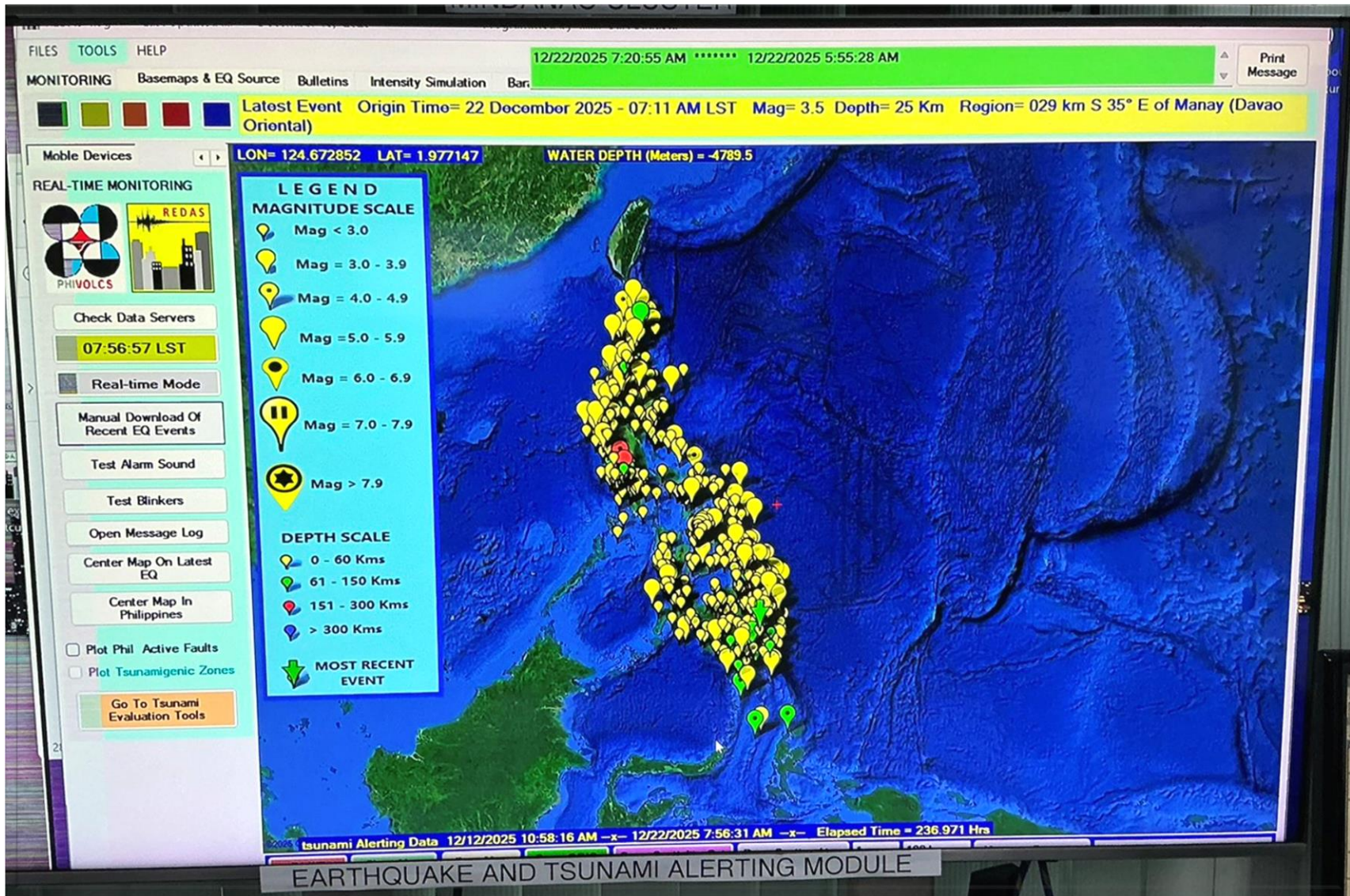


Establish Tsunami Warning System

South China Sea Region Tsunami Ready Related
Training Course | December 22-23, 2025



REDAS-Earthquake and Tsunami Alerting Module



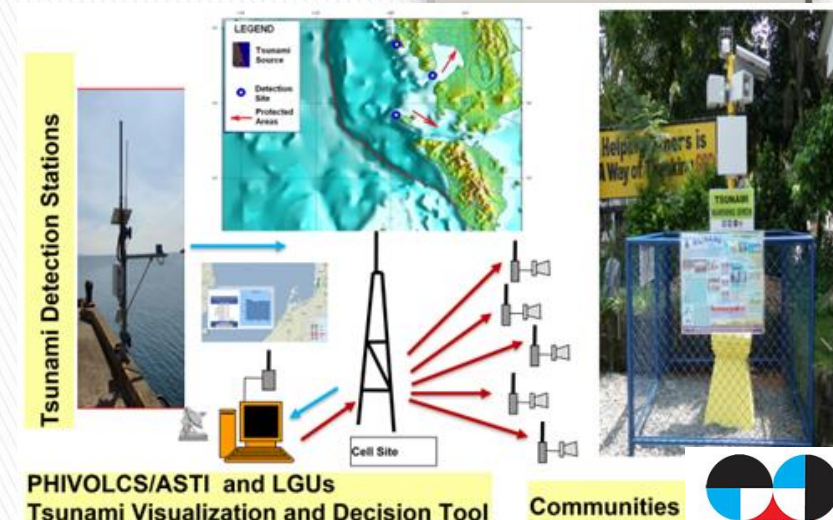
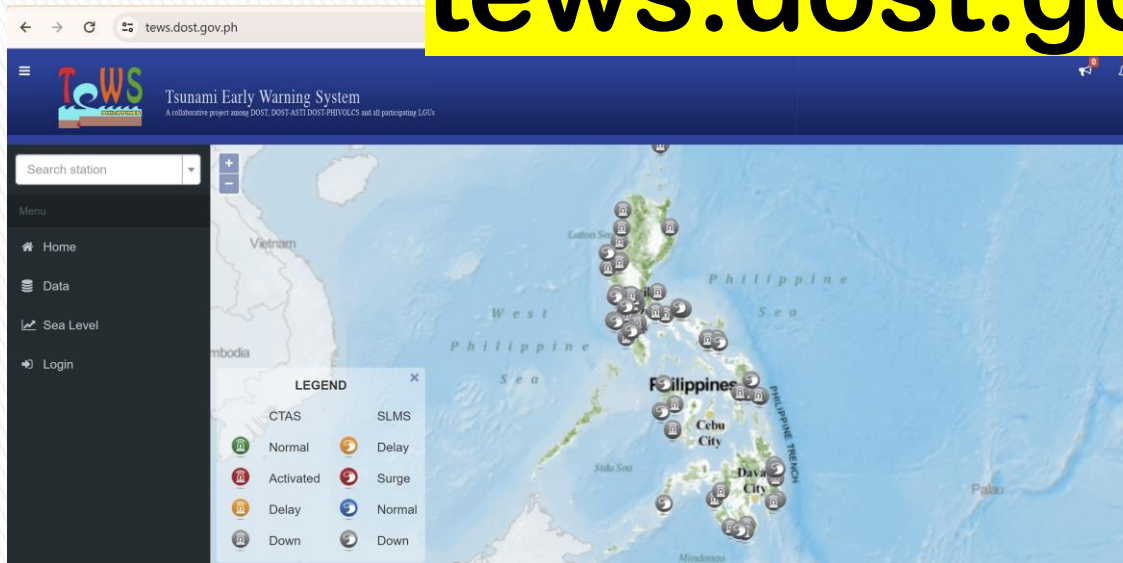
Sea Level Monitoring Stations

Community Tsunami Alerting Stations



Community Tsunami Alerting Stations

tews.dost.gov.ph



The 1976 M8.1 Moro Gulf Earthquake & Tsunami

Tsunami Accounts:

Sequence of Events

- ❖ *A violent shock that awaken people and make standing & walking difficult*
- ❖ *unusually deep recession of the sea*
- ❖ *A strong prolonged approaching sound*
- ❖ *arrival of waves!!!*

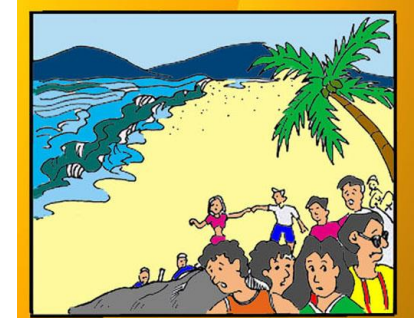
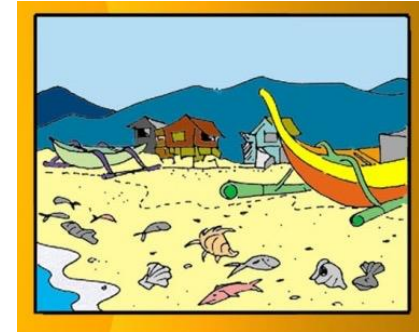
Tsunami!

SHAKE

DROP

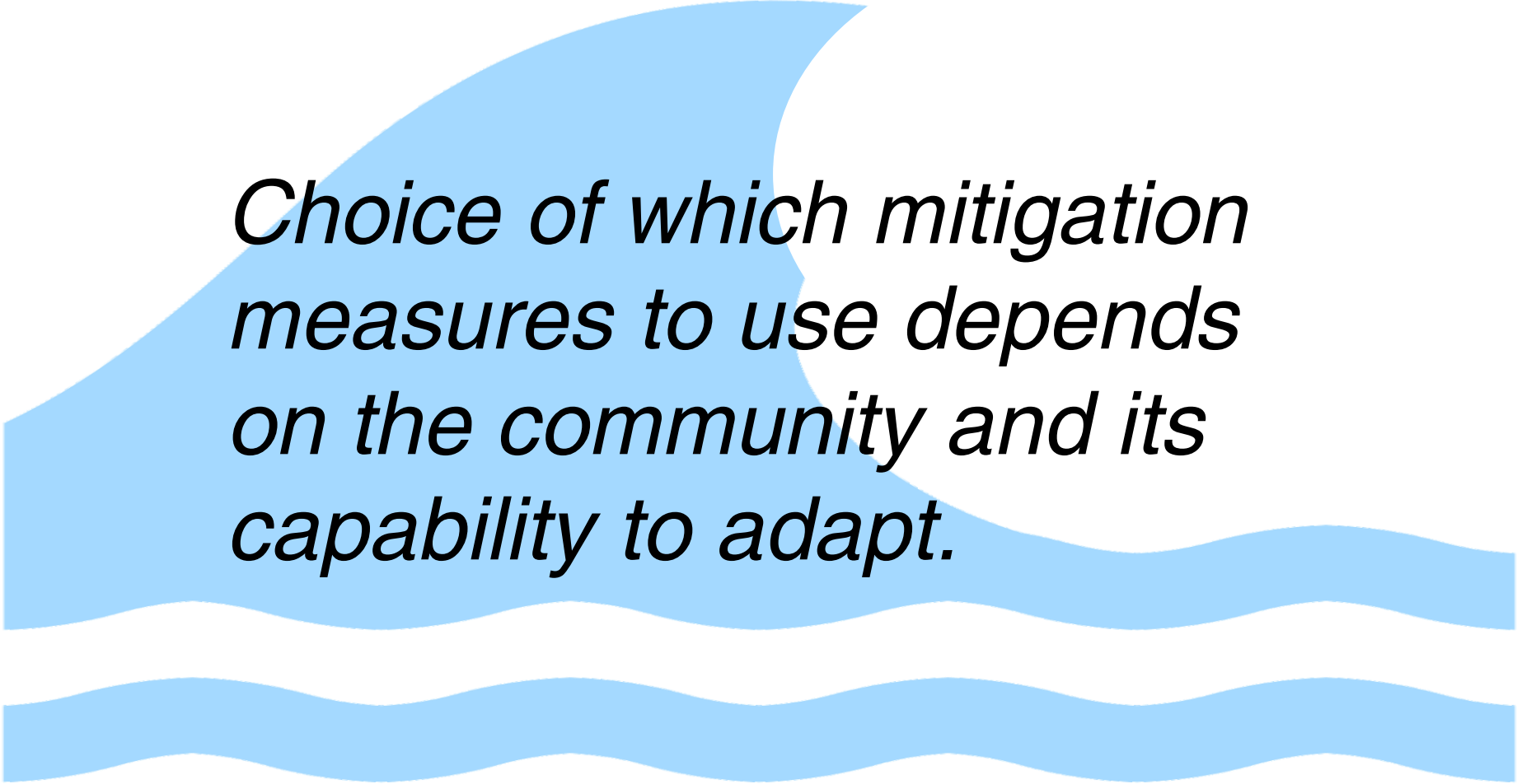
ROAR

Natural Signs of an impending local tsunami



Summary

- Co-implement activities with the communities
- Make communities aware on hazards and its impacts
- Co-create solutions through community activities
- Do exercise
- Sustain



Choice of which mitigation measures to use depends on the community and its capability to adapt.



www.phivolcs.dost.gov.ph



phivolcs_mail@phivolcs.dost.gov.ph



/PHIVOLCS



@phivolcs_dost



DOST - PHIVOLCS



**Department of Science and Technology
Philippine Institute of Volcanology and Seismology**