



Tsunami Ready Toolkit

Update and Progress

Ardito Kodijat, IOTIC
Dr. Laura Kong, ITIC
Alison Brome, CTIC
Denis Cheng Sang, NEAMTIC
Derya Dilmen Vennin NEAMTIC

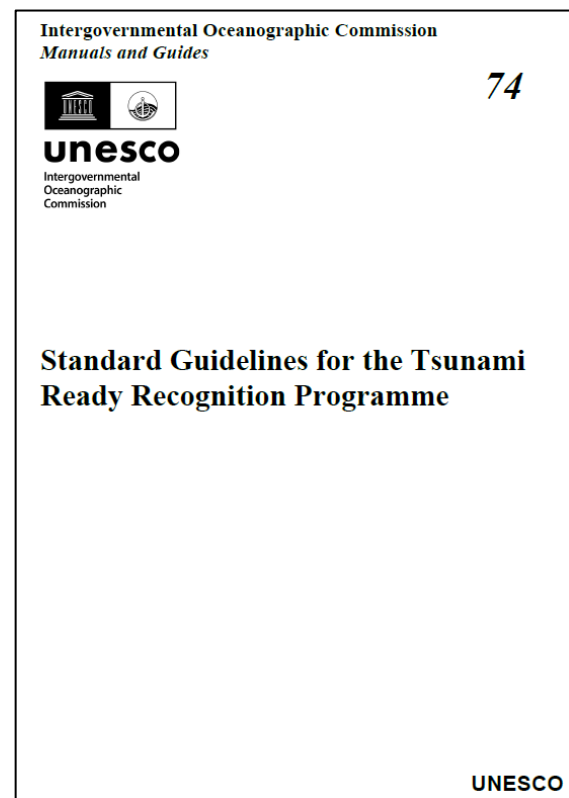
FIRST CONFERENCE OF THE OCEAN DECADE TSUNAMI PROGRAMME

Hyderabad, India
10-11 November 2025

1. Definition, Manuals, and Guides

Manual and Guides

Manual and Guide No 74



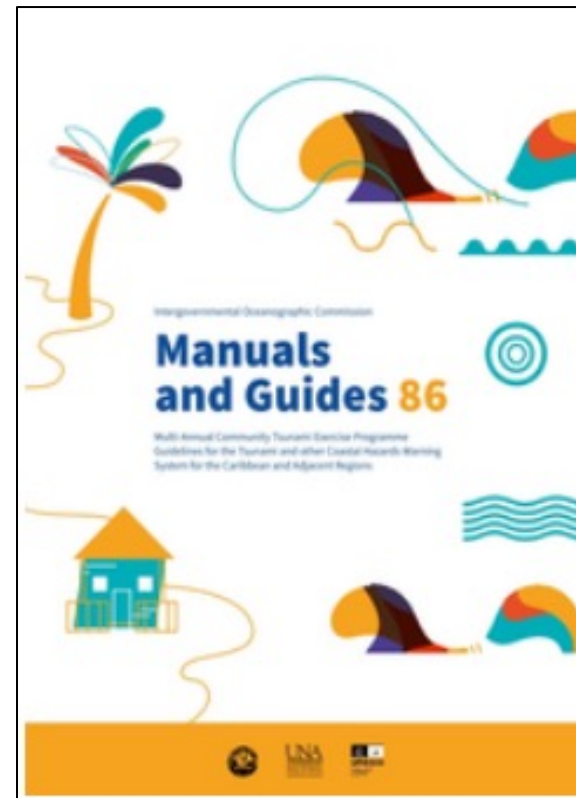
<https://oceanexpert.org/downloadFile/50068>

Manual and Guide No 82



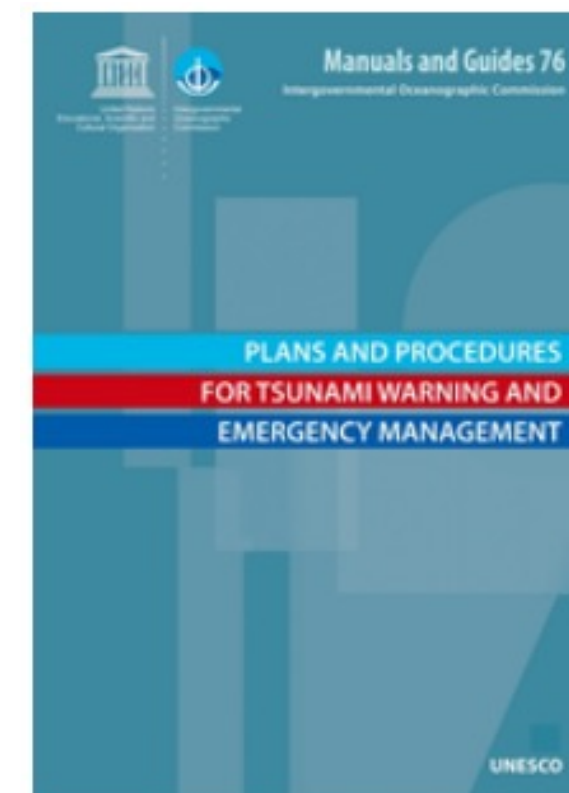
<https://unesdoc.unesco.org/ark:/48223/pf0000373019?posInSet=17&queryId=947ca611-1880-4ded-bb5a-4bd61c93c161>

Manual and Guide No 86



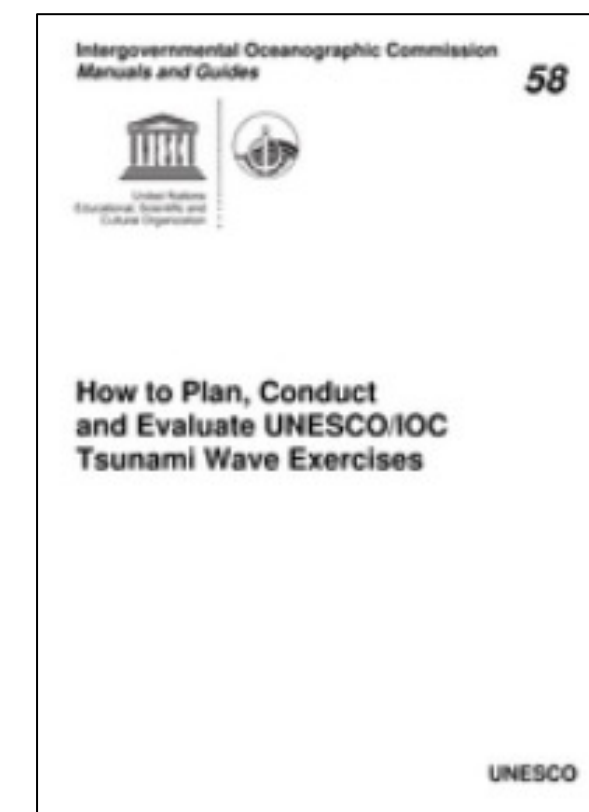
<https://unesdoc.unesco.org/ark:/48223/pf000380540.locale=en>

Manual and Guide No 76



<https://unesdoc.unesco.org/ark:/48223/pf0000256552>

Manual and Guide No 58



<https://unesdoc.unesco.org/ark:/48223/pf0000218967>



1. Definition, Manuals, and Guides

- ❑ **Tsunami Ready Community Definition**
- ❑ **Tsunami Ready Application Form (updated)**
- ❑ **Submission procedures (Automated tool)**
- ❑ **File naming and file types (file metadata)**
- ❑ **TR Renewal procedures (Use the same form as new application)**



1. Definition, Manuals, and Guides

- ❑ **Implementation communications (sample letters and templates)**
 - Letter of Intent, NTRB/RTRB,
 - Application submission,
 - IOC acknowledgement,
 - Recognition and Appreciation Certificate names,
 - Community summary for web page



1. Definition, Manuals, and Guides

- **Recognition Sign (Size, Color, Fonts, Placements of Logos, etc.)**
- **Recognition and Appreciation Certificates (All ICGs)**
- **Recognition Ceremony – sample Concept Note and Agenda**



- ❑ **ITIC is OTGA Specialized Training Center for Tsunamis**
- ❑ **ITIC STC courses collaborative with IOC Tsunami Programme**
(Tsunami Resilience Section, TSR, Head Bernardo Aliaga)
- ❑ **Course names start with UNESCO-IOC xxx**
- ❑ **Self-paced, independent, no trainer interaction**
 - Existing
 1. Tsunami Awareness (2024)
 2. Tsunami Ready (2025)
- ❑ **Hybrid and/or In-person**
 - In-Progress (2024-2027)
 1. Tsunami Warning Center Minimum Staff Competencies



THE OCEANTEACHER NETWORK OF REGIONAL TRAINING CENTRES

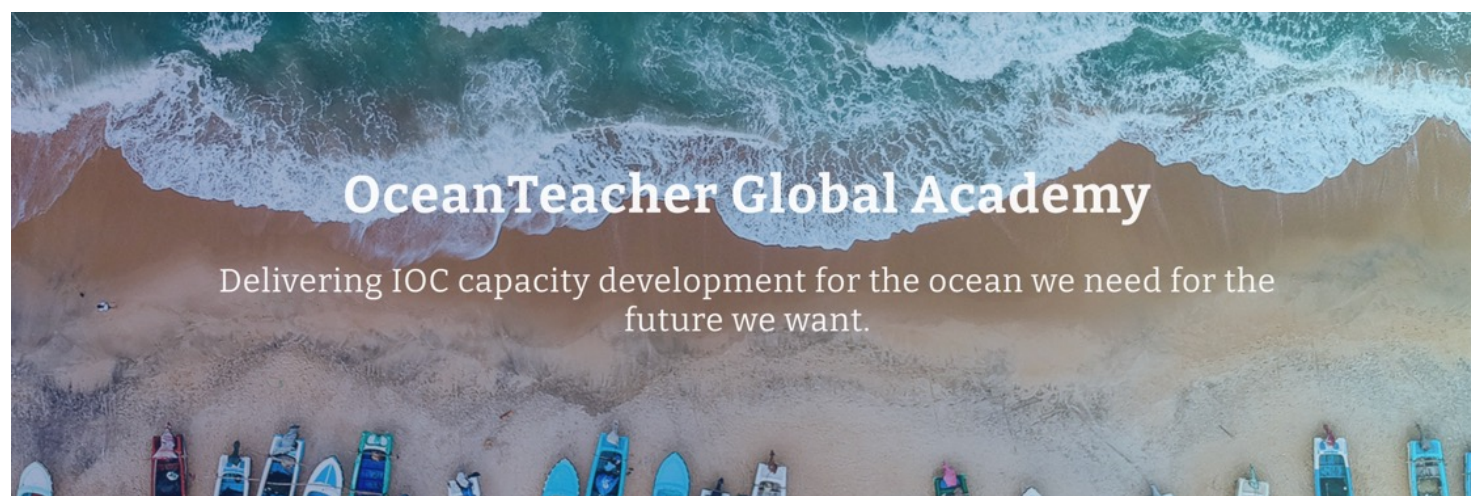
The OceanTeacher Global Academy (OTGA) Project established a global network of Regional and Specialized Training Centres to deliver customized training for ocean experts and professionals to increase national and regional capacity in coastal and marine sciences, services and management.

OTGA UNESCO-IOC Tsunami Online Courses



unesco

Intergovernmental
Oceanographic
Commission



Scientific Knowledge and Research

Course topics include Research data management, OBIS, HAB



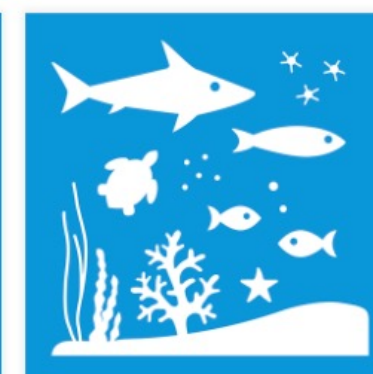
Sustainable Use of Marine Resources

Course topics include Marine Biodiversity Data Management



Marine Spatial Planning

Course topics include Marine spatial planning, GIS applications for ICZM.



Marine and Coastal Ecosystems

Course topics include Marine GIS applications, Coastal mapping & monitoring.

sdg 11.5 Disaster Risk Reduction

Related tags: [ioc_programme](#) [map](#) [ioc_programme](#) [hab](#) [ioc_programme](#) [tsunami](#) [ioc_programme](#) [school](#) [language](#) [english](#) [subject](#) [biodiversity](#) [subject](#) [ipcc](#) [subject](#) [data_management](#) [subject](#) [marine_meteorology](#) [affiliate](#) [seadataroad](#) [more...](#) [Flag as inappropriate](#) [Edit this tag](#)

**UNESCO-IOC
PTWS TWC
Minimum Staff
Competency**

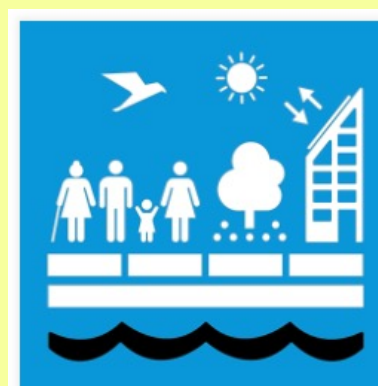
Q1 - 2027

**UNESCO-IOC
Tsunami
Awareness**

Live 2024

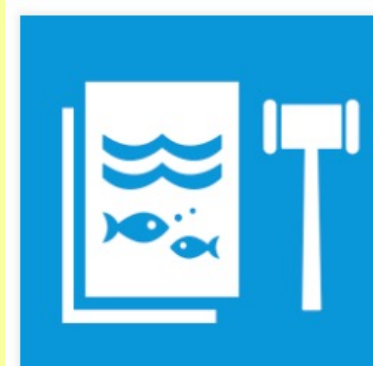
**UNESCO-IOC
Tsunami
Ready**

Live 2025



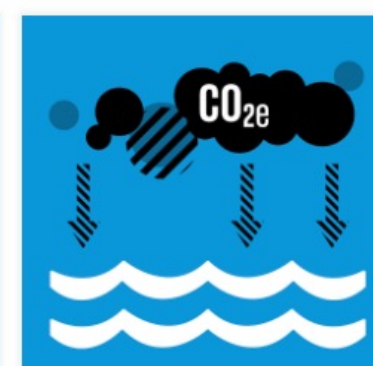
Disaster Risk Reduction

Course topics include Tsunami awareness, Storm surge forecasting.



Implement and Enforce International Sea Law

Course topics include Marine Scientific Research under the UNCLOS.



Ocean Acidification

Course topics include Impacts of ocean acidification.

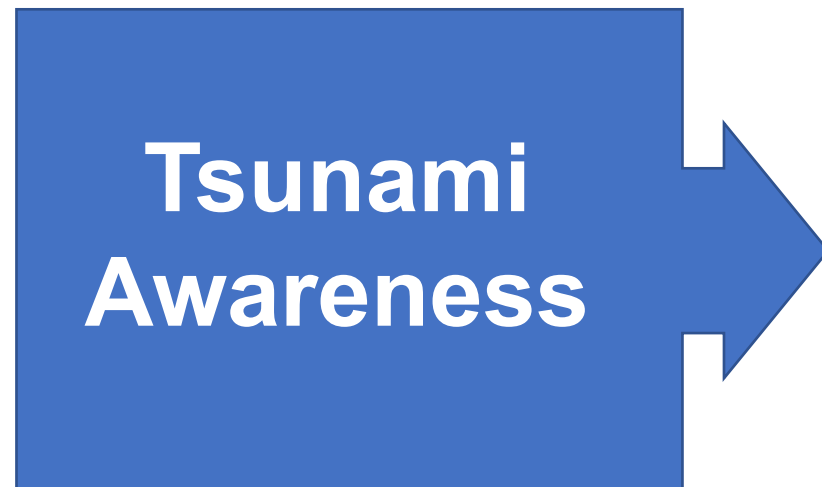


Marine Pollution

Course topics include Prevention and reduction of marine pollution.

<https://classroom.oceanteacher.org/>

- **Self-paced, no instructor – 6 hrs**
- **UNESCO-IOC Tsunami Awareness certificate required for later UNESCO-IOC courses**



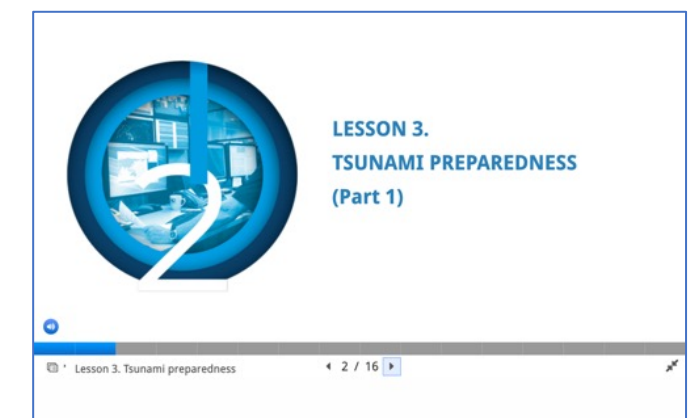
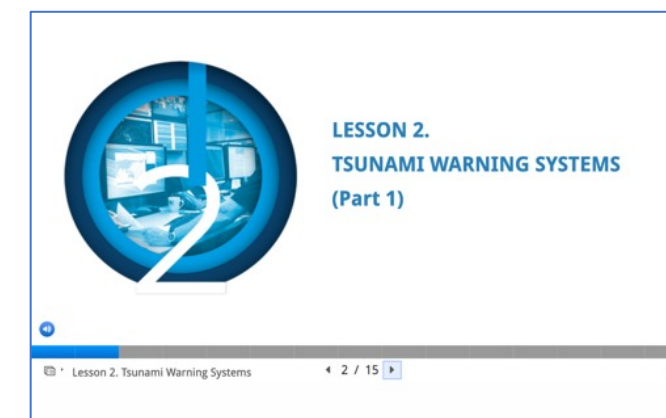
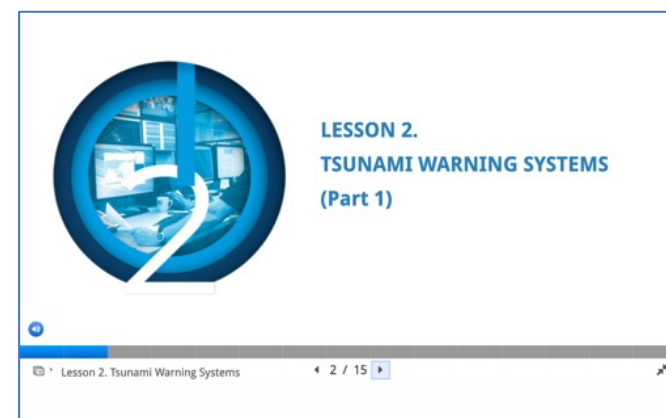
Pre-Quiz

Lesson 1: Tsunami Basics (Parts 1 and 2)

Lesson 2: Tsunami Warning Systems (Parts 1 and 2)

Lesson 3: Tsunami Ready Preparedness (Parts 1 and 2)

Post-Test



- **2 parts (18, 23 Slides)**
- **2 parts (14, 18 Slides)**
- **2 parts (15, 23 Slides)**
- **All Lessons have Activities, Knowledge review checks, Narration**

TSUNAMI AWARENESS COURSE

TSUNAMI COURSE 2022

The UNESCO/IOC Project Office for IOOE is certified as a Learning Services Provider

Tsunami Awareness Course 1 / 20

1. Tsunami Basics – 1, 2
2. Tsunami Warning Systems – 1, 2
3. Tsunami Preparedness – 1, 2

INTRODUCTION

Tsunami – The Japanese term meaning wave («nami») in a harbour («tsu»). A series of travelling waves of extremely long length and period, usually generated by disturbances associated with earthquakes occurring below or near the ocean floor (also called seismic sea wave and, incorrectly, tidal wave). Volcanic eruptions, submarine landslides, and coastal rock falls can also generate tsunamis, as can a large meteorite impacting the ocean (ITIC, Glossary, 2019).

According to the Global Historical Tsunami Database, tsunamis that cause damage or deaths near their source occur approximately twice per year.

Tsunamis that cause damage or deaths on distant shores (more than 1,000 kilometers, 620 miles, away) occur about twice per decade.

Ref: [Tsunami Strike: Japan](#)

Introduction (1) 3 / 20

APPROACHING THE COAST

Because the speed of a tsunami depends on the depth of the water it is traveling through, the deeper the water, the faster the tsunami moves. As tsunamis have very long wavelengths (tenths or hundreds of kms) they might be barely noticeable in the deep ocean.

When tsunamis propagate into shallow water near the coast they slow down (as depth decreases) wavelengths decrease and consequently waves grow in height, and currents intensify.

Close to the shore, most tsunamis slow to the speed of a car, approximately 30 to 50 km/h. Just note you can not run away: the 100m world recordist runs 100m in app 10 seconds or 36km/h.

Depth	Wavelength	Speed
meters	kilometers	kmh
7,000	213	843
4,000	213	713
2,000	106	504
200	10	158
50	2.6	79
10	0.6	36

Approaching the coast 6 / 24

TSUNAMI WARNING CENTRE

The mission of a Tsunami Warning Centre (TWC) is to provide tsunami early warnings on potentially destructive tsunamis.

It provides this information to emergency officials, and as appropriate, directly to the public. In order to carry out its mission, the TWC uses local and global seismographic networks transmitting seismograms in real-time to continuously monitor seismicity in order to locate and size potentially tsunamigenic earthquakes.

TWC also use sea level networks reporting data in real and near real-time to verify the generation and evaluate the severity of a tsunami. TWC then disseminate tsunami advisory and warning messages to designated national or local emergency response authorities for their subsequent action.

South Korea National Tsunami Warning Center, Korea Meteorological Administration

Tsunami warning centre 12 / 17

INDIVIDUAL PREPAREDNESS. LEARN NATURAL WARNING

FEEL

- Big local earthquakes may cause tsunamis
- FEEL the ground shaking severely, or for a long time?

IF the earth shakes a tsunami may follow!

The earthquake shakes the coast before the arrival of the tsunami. The shaking is a natural warning for people to run to higher ground

Learn natural warning signs 14 / 25

THE TRANSATLANTIC TSUNAMI THAT SHOCKED EUROPE. LISBON 1st NOVEMBER 1755

The 1755 Great Lisbon earthquake and tsunami is the greatest seismic generated disaster that shook western Europe and North Morocco and triggered a transatlantic tsunami that impacted the Caribbean and Brazil. Its direct cost is evaluated between 32-48% of the Portuguese GDP.

Water Height

Water Height	0-1 m or unknown	1-2 m	2-6 m	5-10 m	10+ m
Tide Gauges / Deep Ocean Gauges	1	1	1	1	1

History-Lisbon 11 / 20

COMMUNICATION INFRASTRUCTURE

TV, phone, radio, mobile means, Tsunami Warning

Communication infrastructure 8 / 19

COMMUNITY PREPAREDNESS. IDENTIFY SHELTER AND ASSEMBLY POINTS

Shelter Zones should be:

- Outside the inundation zone
- Reachable within a short walking distance
- Easily identified by locals and visitors and available to all
- In flat coastal locations with no tall buildings or other shelter sites, people should head as far inland as they can.

Community preparedness 3 / 25

ACTIVITY 3.8

Read up about why the 5th November is the World Tsunami Awareness day

Hint: Inamura no Hi

Activity 3.8 24 / 25

- **Self-paced, no instructor – about 2-3 hrs**

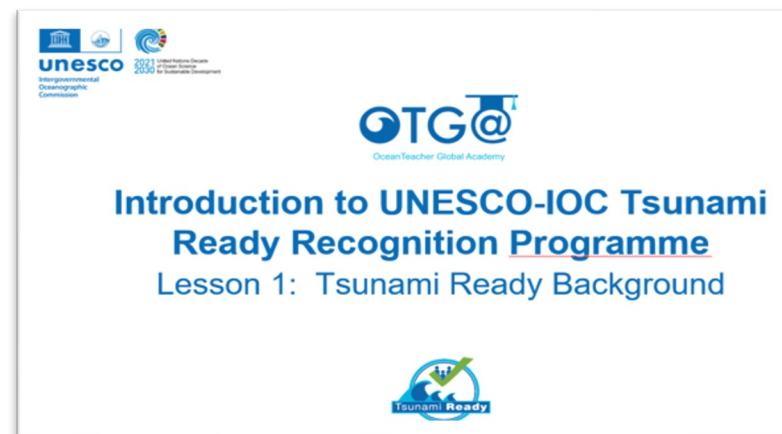
Course 1
Introduction to UNESCO-IOC
Tsunami Ready Recognition
Programme

Lessons 1: Tsunami Ready Background
Lessons 2: Tsunami Ready Implementation Process
Lessons 3: Tsunami Ready Indicators

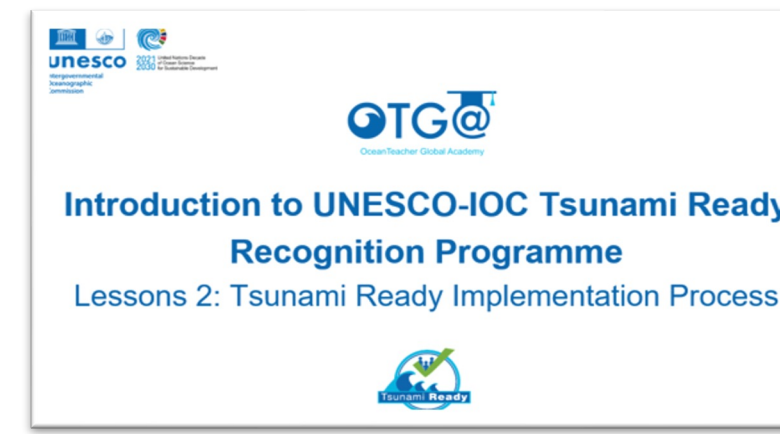
Course 2
Facilitating Tsunami Ready
September 2026

Lessons 1: Approach to Tsunami Ready Community Capacity Building
Lessons 2: Assessment Indicators
Lessons 3: Preparedness Indicators
Lessons 4: Response Indicators

Course 1



- **23 Slides**



- **19 Slides**

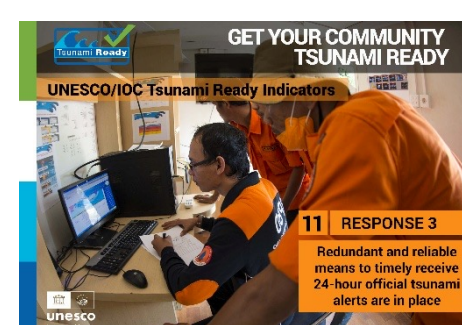
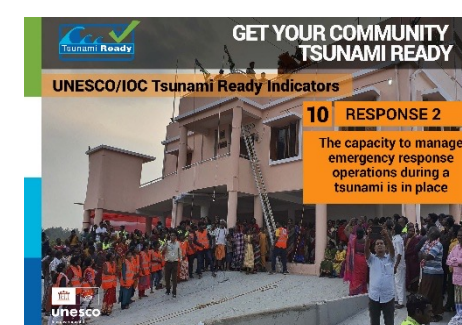
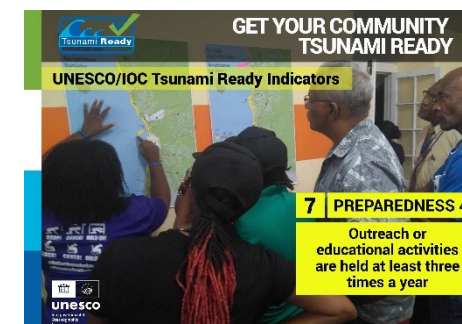
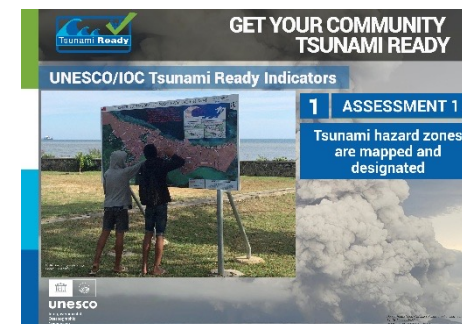
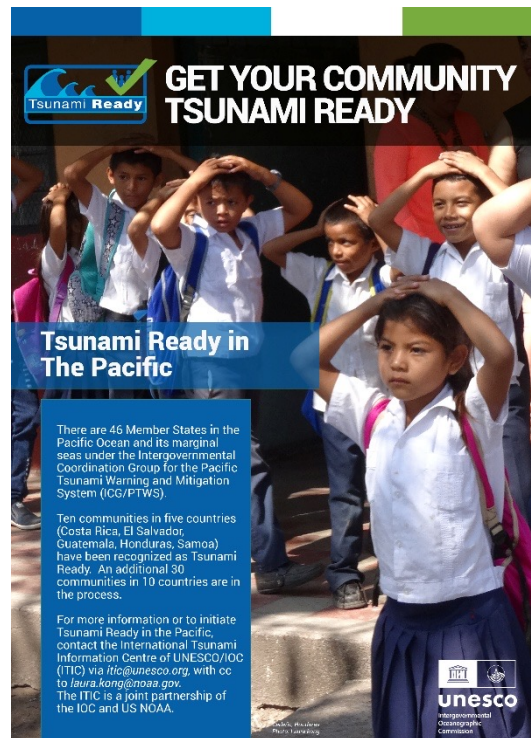


- **22 Slides**

- **All Lessons have Activities, Knowledge review checks, Narration**

3. Awareness and Educational Tools

Tsunami Ready Posters



3. Awareness and Educational Tools

Tsunami Ready Videos

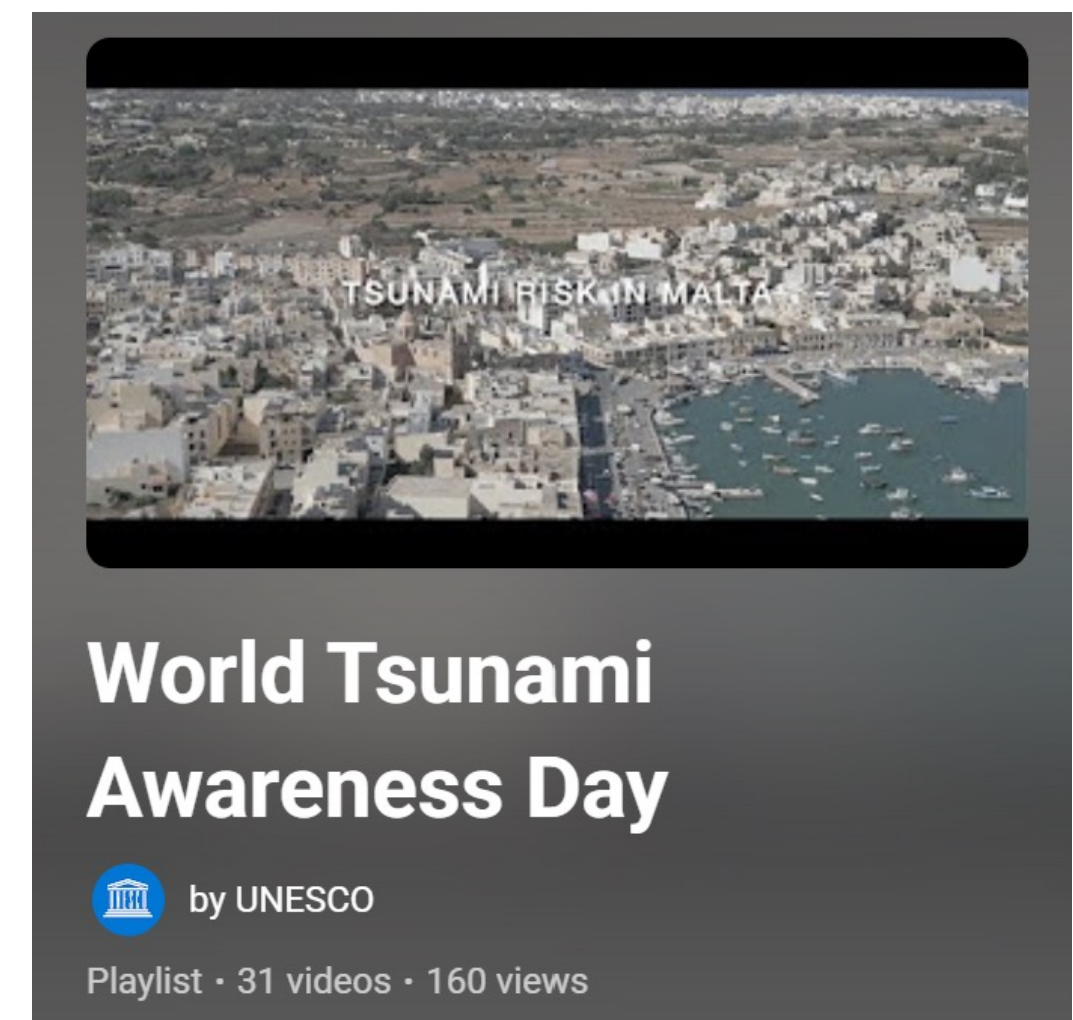


Story line:

Following the journey of Azam, Azizah, and Adam in building their Village “Nami” to be a Tsunami Ready Community based on UNESCO-IOC Tsunami Ready Indicators



- Video 1: Tsunami Ready (an introduction) **+ 7:10 minutes**
- Video 2: Tsunami Hazard for Tsunami Ready Community **+ 8:02 minutes**
- Video 3: Knowing people at risk of tsunami **+ 4:48 minutes**
- Video 4: Resource and capacity for Tsunami Ready Community **+ 6:57 minutes**
- Video 5: Public Tsunami Information in Community **+ 5:32 minutes**
- Video 6: Tsunami Evacuation Map for the community **+ 5:15 minutes**
- Video 7: Public Awareness and Education Resources **+ 5:07 minutes**
- Video 8: Outreach Activities in Tsunami Ready Community **+ 4:39 minutes**
- Video 9: Community Tsunami Exercise **+ 6:49 minutes**
- Video 10: Community Tsunami Emergency Operation Plan **+ 5:28 minutes**
- Video 11: Building Capacity in community for Emergency Response **+ 7:50 minutes**
- Video 12: Linking the Community to the Tsunami Warning Chain **+ 4:40 minutes**
- Video 13: Providing warning to the community **+ 5:27 minutes**
- Video 14: Getting Tsunami Ready Recognition **+ 6:50 minutes**



3. Awareness and Educational Tools

Boardgames

Tsunami Ready



To introduce the 12 Tsunami Ready Indicators to the stakeholders

RUNAMI



- Tsunami Awareness
- Tsunami Preparedness
- Tsunami Evacuation
- Tsunami Drills



4. Assessment Tools

- ❑ **Capacity Assessment to Implement Tsunami Ready Indicators**
- ❑ **Feedback Survey on the Implementation of the UNESCO-IOCTsunami Ready Recognition Programme in ICG/CARIBE-EWS**
- ❑ **Assessment tools on the impact of Tsunami Ready to UNESCO-IOC Recognized Community in Indian Ocean (piloted in Indonesia)**





Thank You

Ardito Kodijat, IOTIC
Dr. Laura Kong, ITIC
Alison Brome, CTIC
Denis Cheng Sang, NEAMTIC
Derya Dilmen Vennin NEAMTIC

10-11 November 2025
INCOIS, Hyderabad, India

First Conference of the
Ocean Decade Tsunami Programme