

TSUNAMI EVACUATION PLANING

Challenges/Success stories

ITIC TRAINING PROGRAMME (ITP) - REGIONAL TRAINING WORKSHOP
TSUNAMI EVACUATION MAPS, PLANS AND PROCEDURES (TEMPP 2):

Tsunami Evacuation Maps and Community Response Plans

13-17 April 2026

Tanoa International Hotel, Nadi, Fiji

SOLOMON ISLANDS

TSUNAMI MANAGEMENT

Emergency Sub Plan and Standard Operating Procedures During Tsunami Events For Emergency Operations Centres (National and Provincial) –(Draft to be updated) .

- The purpose of this document is to detail mitigation, preparedness, and response and recovery arrangements for tsunamis that affect Solomon Islands.

3

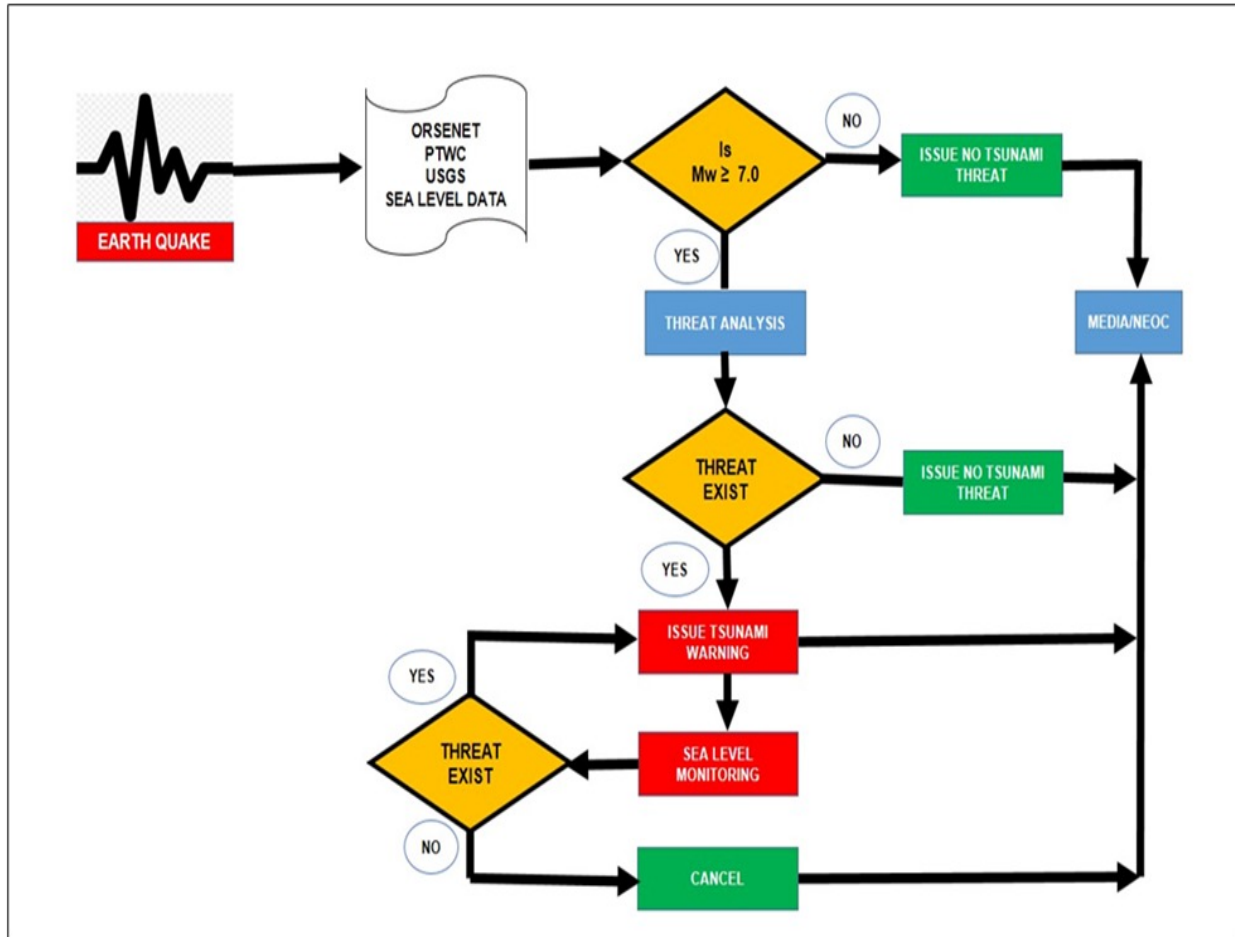
**Emergency Sub Plan and
Standard Operating Procedures
During Tsunami Events
For Emergency Operations Centres
(National and Provincial)**

2

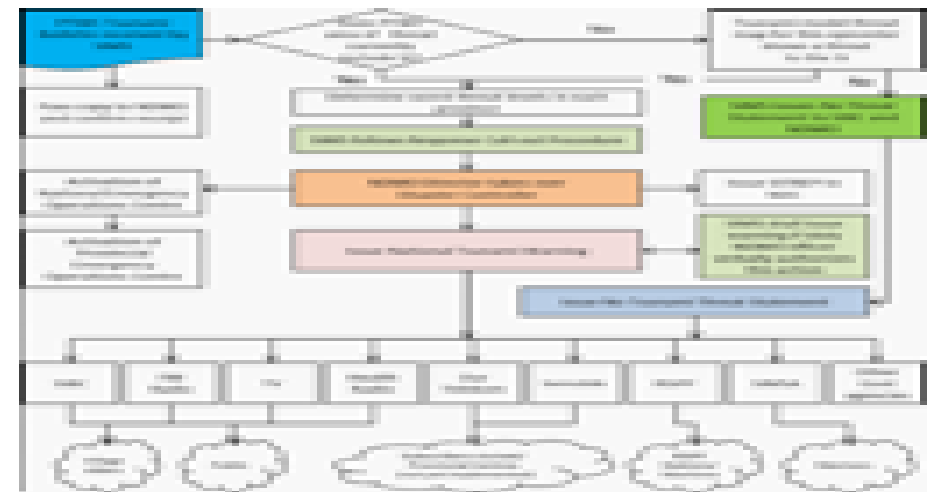
Draft 12-13 September-June 2012/2013

THREAT ASSESSMENT – NTCWC/NDMO

(National subplan)



Bulletin/ Product	Alert Level	Public Action Statement	Hazard Potential
Information	No Threat Statement	No action suggested at this time	No threat or very distant event for which hazard has not been determined
Watch	Tsunami Watch	Be prepared to act Stay tuned to local radio/TV	Tsunami Possible Alert level may change once more information is known
Advisory (Marine Warning)	No Tsunami Threat Statement with unusual Current	Stay out of the water and away from the shore	Strong currents and waves dangerous to those in or very near coastal waters
Warning	Warning	Move to high ground or inland immediately	Dangerous coastal flooding and powerful currents



Challenges and Gaps -Evacuation Planning

- No designated Tsunami Evacuation Center - National Level (use schools/community hall for shelter management after disasters)
- Self Evacuation Triggered by Warning - Public depend on information from the Warnings or response to Natural Warnings for Evacuation - Awareness to move to higher ground .
- Community based Evacuation - Communities /Institutions that have undergone DRR/CBDRM programs have established response plans. These plans include designated evacuation centers/safe areas and identified evacuation routes, as well as arrangements for managing evacuation centers during emergencies .(8000 communities –some do not have plans)

Successes stories – Community /Schools with Tsunami Evacuation Center/Plans -



- Impacted by the 2007 Tsunami
- 50 people died
- Undergo CBDRM
- Established Disaster Committee
- Developed stand alone Response Plans
- Build Evacuation Center
- Other communities duplicate set up



TSUNAMI EVACUATION CENTER -SAFE AREA



TSUNAMI EVACUATION ROUTE



TSUNAMI HAZARD AND EVACUATION MAP



TSUNAMI SIGNAGES



TSUNAMI HAZARD ZONE
PLES NO SEIF TAEM TSUNAMI



IN CASE OF EARTHQUAKE, GO
TO HIGH GROUND OR INLAND

TAEM HEM EARTH QUAKE, MUV
UP LO HILL. NO STAP LO HIA



ROD FO FOLOM TAEM
TSUNAMI



TSUNAMI SAFE AREA
WAIT FOR OFFICIAL ALL CLEAR
SEIF PLES FO STAP
TAEM TSUNAMI





TSUNAMI DRILLS



TSUNAMI AWARENESS

WAY FORWARD – UNESCO/IOC Tsunami Ready Recognition Programme

UNESCO IOC TSUNAMI READY INDICATORS	
I	ASSESSMENT (ASSESS)
1	ASSESS-1. Tsunami hazard zones are mapped and designated.
2	ASSESS-2. The number of people at risk in the tsunami hazard zone is estimated.
3	ASSESS-3. Economic, infrastructural, political, and social resources are identified.
II	PREPAREDNESS (PREP)
4	PREP-1. Easily understood tsunami evacuation maps are approved.
5	PREP-2. Tsunami information including signage is publicly displayed.
6	PREP-2. Outreach and public awareness and education resources are available and distributed.
7	PREP-3. Outreach or educational activities are held at least three times a year.
8	PREP-4: A community tsunami exercise is conducted at least every two years.
III	RESPONSE (RESP)
9	RESP-1. A community tsunami emergency response plan (TERP) is approved.
10	RESP-2. The capacity to manage emergency response operations during a tsunami is in place.
11	RESP-3. Redundant and reliable means to timely receive 24-hour official tsunami alerts are in place.
12	RESP-4. Redundant and reliable means to timely disseminate 24-hour official tsunami alerts to the public are in place.

2025 - 4

2026-1 - 5

2026-2 - 40



23	101	Recognized	Majuro city	Marshall Islands	Tsunami Ready Program
24	95	Recognized	Republic of Palau	Republic of Palau	Tsunami Ready Program
25	118	Recognized	Puerto Ayora	Ecuador	Tsunami Ready Program
26	120	Recognized	Puerto Villamil	Ecuador	Tsunami Ready Program
27	126	Recognized	Yap State	Federated States of Micronesia	Tsunami Ready Program
28	127	Recognized	La Punta	Peru	Tsunami Ready Program
29	139	Expression of Interest	Curuvu	Fiji	Tsunami Ready Program
30	140	Expression of Interest	Rukurukulevu	Fiji	Tsunami Ready Program
31	138	Expression of Interest	Tore	Fiji	Tsunami Ready Program
32	137	Expression of Interest	Yadua	Fiji	Tsunami Ready Program
33	110	Ongoing	Kosrae State	Federated States of Micronesia	Tsunami Ready Program
34	123	Ongoing	Tarawa	Kiribati	Tsunami Ready Program
35	144	Ongoing	Moro Gulf, TBD others	Philippines	Tsunami Ready Program
36	145	Ongoing	35 new, tsu- affected [Sep 2026]	Samoa	Tsunami Ready Program
37	124	Ongoing	Honiara	Solomon Islands	Tsunami Ready Program
38	146	Ongoing	TBD (FY26 proposed)	Tonga	Tsunami Ready Program
39	135	Ongoing	Anelityum	Vanuatu	Tsunami Ready Program
40	125	Ongoing	Port Vila	Vanuatu	Tsunami Ready Program
41		Planned	Enewetak Atoll	Marshall Islands	Tsunami Ready Program
42		Planned	Kwajalein Atoll	Marshall Islands	Tsunami Ready Program
43		Planned	TBD	Mexico	Tsunami Ready Program
44		Planned	TBD	China	Tsunami Ready Program
45	117	Planned	Puerto Armuelles	Panama	Tsunami Ready Program
46	147	Planned	TBD (FY26 proposed)	Papua New Guinea	Tsunami Ready Program