

ITIC TRAINING PROGRAMME (ITP) - REGIONAL TRAINING WORKSHOP TSUNAMI EVACUATION MAPS, PLANS AND PROCEDURES (TEMPP 2):

Tsunami Evacuation Maps and Community Response Plans

13-17 April 2026 Tanoa International Hotel, Nadi, Fiji



Introduction

- Nauru Geography 21 sq km
- Nauru is situated 42 km south of the equator
- Population of 12,025 (as of 2025)
- Micronesian Region $0^{\circ}32'S$ $166^{\circ}55'E$
- Nauru Highest ground is 65m above sea level



Pacific Ring of Fire

Nauru is situated in a very quiet seismic area but is surrounded by the Pacific "ring of fire," which aligns with the boundaries of the tectonic plates.

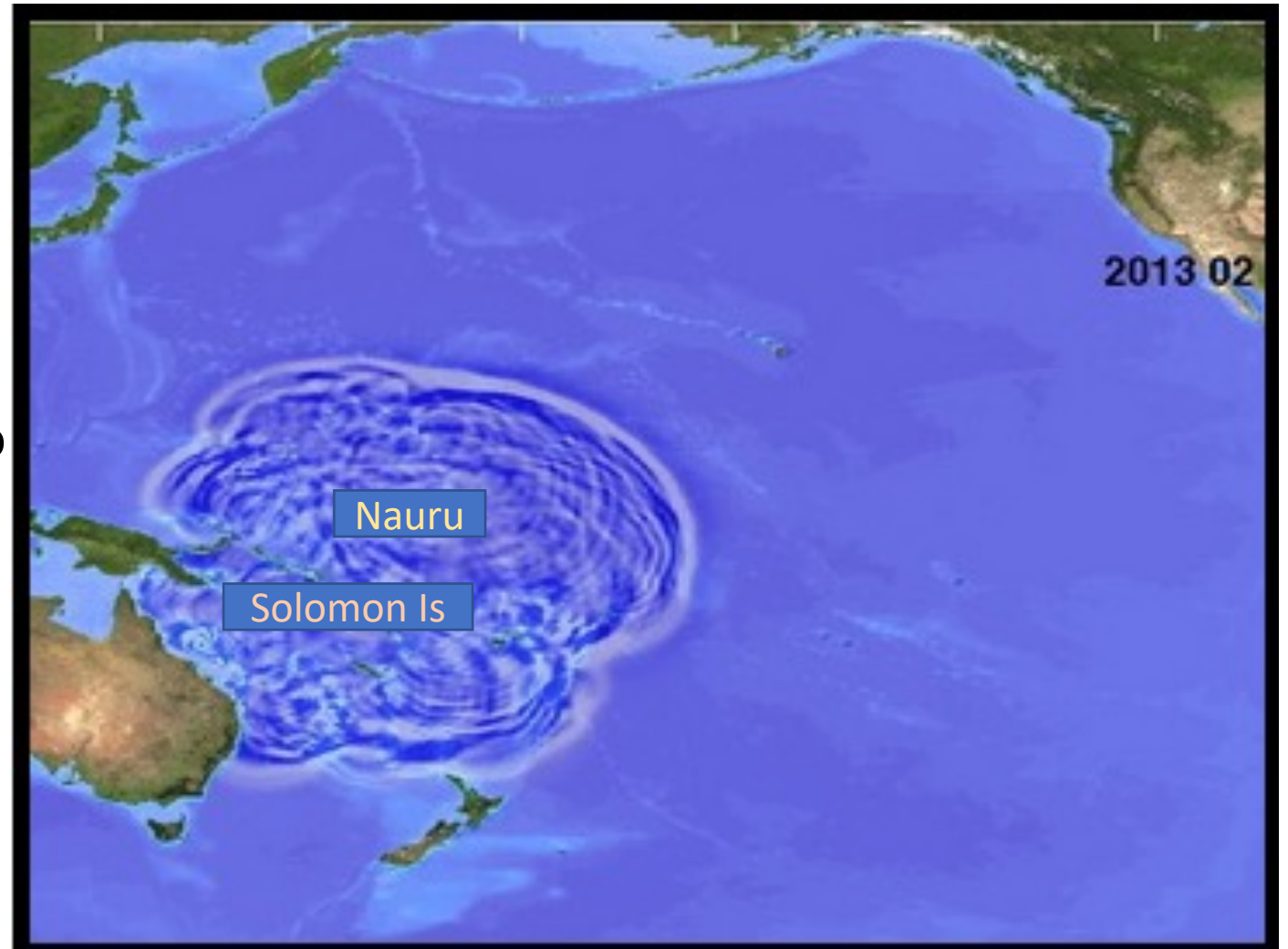
These tectonic plate boundaries are extremely active seismic zones capable of generating large earthquakes and, in some cases, major tsunamis that can travel great distances.



Tsunami threat simulation

Cont...

The only Tsunami threat for Nauru is when the Tsunami threat is coming from the Solomon Island of magnitude of over 8.0+



Nauru Tsunami evacuation signage

Tsunami evacuation signage has been placed around Nauru especially the roads leading up to higher hills of Nauru of the District of:

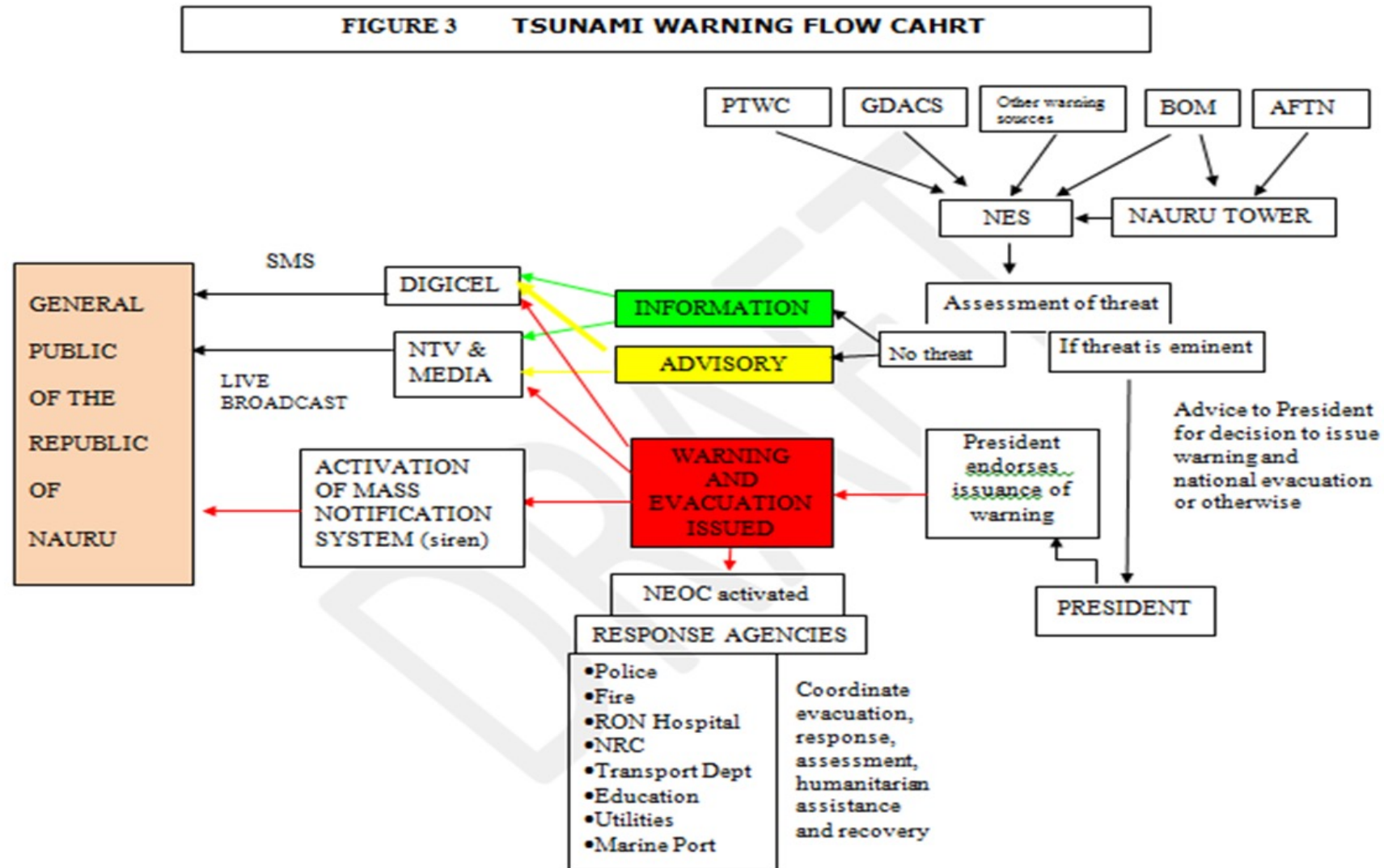
- Meneng Hill
- Aiwo Hill
- Baitsi inland Hill



Level of Warning

	Earthquake Depth	Epicenter on Land or at Sea	Product Type	NDRMO Actions
5.7 and greater	-	-	Observatory Message	No action required
6.5 – 7.5	-	-	Tsunami Information Bulletin	Inform Controller
7.6 and greater	≥ 100 km	-	Tsunami Information Bulletin	Inform Controller
7.6 and greater	-	In land	Tsunami Information Bulletin	Inform Controller
7.6 – 7.8	< 100 km	Near Shore or Offshore	Regional Fixed Tsunami Warning	Assess threat, advise Controller and await further advisory from PTWC
7.9 and greater	< 100 km	Near Shore or Offshore	Regional Expanding Warning and Watch	<ul style="list-style-type: none"> • Recommend issuance of warning to controller, • Issue warning after being ratified by Controller and President of Nauru • Provide advisory on evacuation
9.0 and greater Confirmed tsunami with wide spread destructive potential			Pacific Wide Warning	<ul style="list-style-type: none"> • Recommend issuance of warning to controller, • Issue warning after being ratified by Controller and President of Nauru • Provide advisory on evacuation

Flow Chart



Aerial Map View



Schools Emergency Drill Program



Schools Emergency Drill Program



School Project



Nibok Infant School pathway
b4



Nibok Infant School Pathway
after clearance

END

Tubwa

Vinaka

Tenkyu Tumas

Ko rabwa

Fakafetai

Fa'afetai

Malo

Thank you