



Tsunami Response Planning - KIRIBATI

13–17 April 2026 | Nadi, Fiji

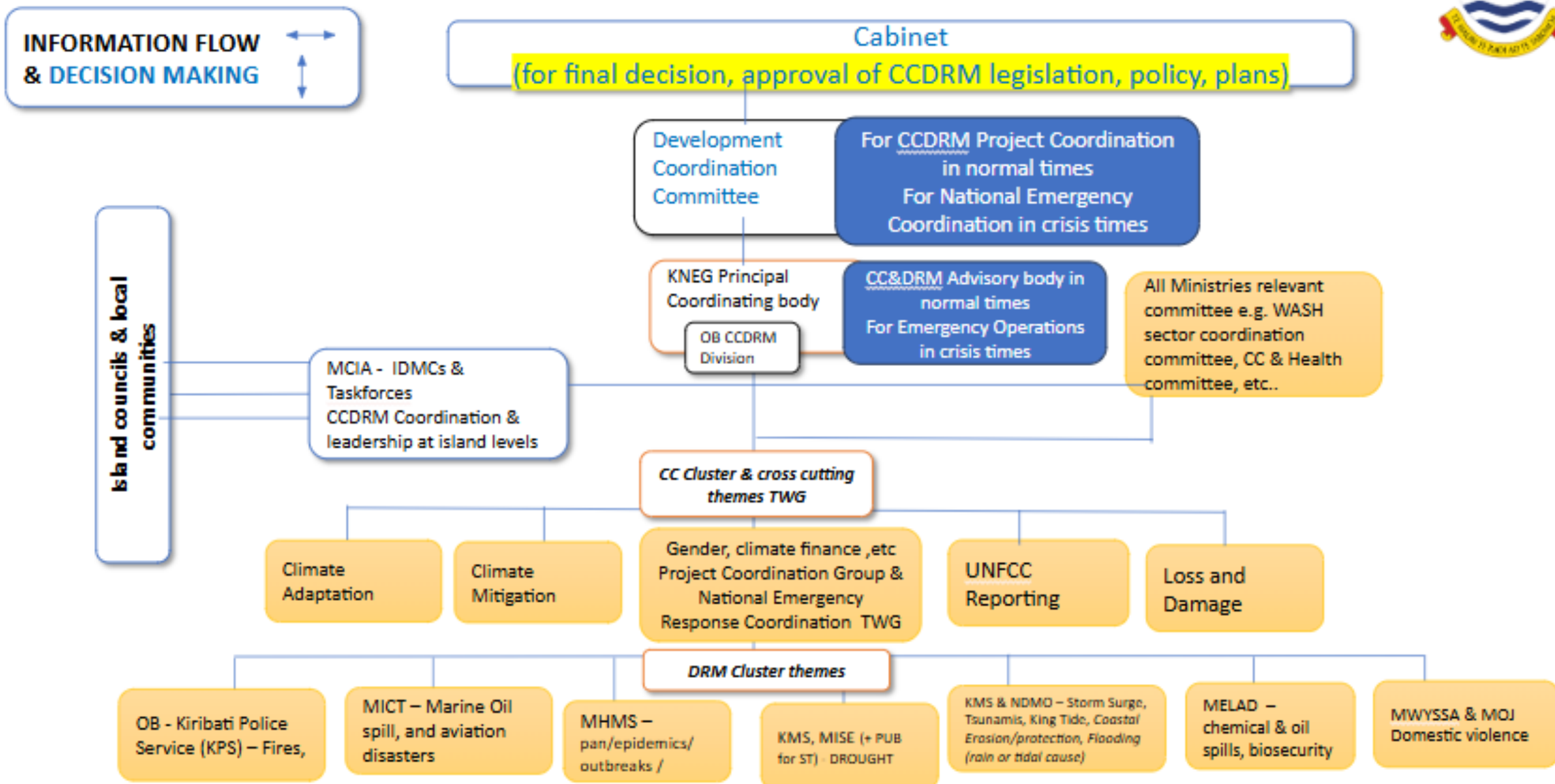


Country Context Overview (*Kiribati in brief*)



- The Republic of Kiribati is a Pacific island nation comprising **32 atolls and one raised island (Banaba)**, spread across the equator. All divided into 3 groups.
- Most land is **less than 2 m above sea level**, making it one of the most climate-vulnerable countries globally.
- The population is around **120,000–130,000**, with high density on **South Tarawa**, where land space is a challenge.

National CCDRM Coordination Structure - Normal times



Kiribati Tsunami Support Plan



Purpose – To guide the Nation in its efforts to coordinate preparedness, warning, response, & recovery actions for tsunami events.

Authority – CCDRM ACT 2019 & KMS ACT 2021

Scope – Agencies, Government ministries, Island councils, NGO's, civil society, private sectors, and communities, and foreign nationals



Past Tsunami Events Affecting Kiribati

Table 2 below shows tsunami events that have affected Kiribati.

Date							Tsunami Runup Location		
Year	Mo	Dy	Hr	Min	EQ Mag	Name	Distance fr Source	Max Water Hgt (m)	
1899, PAPUA NEW GUINEA	1	15				GILERT ISLANDS	4032		
1952 - KAMCHATKA	7	13	11	58	6.8	CANTON ISLAND, PHOENIX ISLANDS	2713		
1952 - KAMCHATKA	11	4	16	58	9	KANTON ISLAND, PHOENIX ISLANDS	6721	0.1	
1957 - ALEUTIANS	3	9	14	22	8.6	CHRISTMAS ISLAND, LINE ISLANDS	5741	0.17	
1957 - ALEUTIANS	3	9	14	22	8.6	KANTON ISLAND, PHOENIX ISLANDS	6030	0.12	
1960 - CHILE, SOUTHERN	5	22	19	11	9.5	CHRISTMAS ISLAND, LINE ISLANDS	9629	0.23	
1960 - CHILE, SOUTHERN	5	22	19	11	9.5	KANTON ISLAND, PHOENIX ISLANDS	10541	0.1	
1963, KURILS	10	13	5	17	8.5	CHRISTMAS ISLAND, LINE ISLANDS	7007	0.1	
1964 - ALASKA	3	28	3	36	9.2	CHRISTMAS ISLAND, LINE ISLANDS	6619	0.05	
1964 - ALASKA	3	28	3	36	9.2	KANTON ISLAND, PHOENIX ISLANDS	7396	0.03	
1966 - CHILE, NORTHERN	12	28	8	18	7.8	CHRISTMAS ISLAND, LINE ISLANDS	9782	0.03	
2013 - SANTA CRUZ, SOLOMONS	12	31	18	23	7.8	CHRISTMAS ISLAND, LINE ISLANDS	4276		
2001 - PERU	6	23	20	33	8.4	CHRISTMAS ISLAND, LINE ISLANDS	9414	0.03	
2003 ALEUTIANS, RAT ISLANDS	11	17	6	43	7.8	CHRISTMAS ISLAND, LINE ISLANDS	5907	0.04	
2006 - KURILS	11	15	11	14	8.3	BETIO, TARAWA	5381	0.04	
2006 - KURILS	11	15	11	14	8.3	KANTON ISLAND, PHOENIX ISLANDS	6477	0.02	
2009 - INDONESIA , PAPUA	1	3	19	43	7.6	BETIO, TARAWA	4458	0.02	
2009 - SAMOA	9	29	17	48	8.1	CHRISTMAS ISLAND, LINE ISLANDS	2523	0.17	
2011 - JAPAN	3	11	5	46	9.1	BETIO, TARAWA	5154	0.27	
2011 - JAPAN	3	11	5	46	9.1	CHRISTMAS ISLAND, LINE ISLANDS	7306	0.53	
2011 - JAPAN	3	11	5	46	9.1	KANTON ISLAND, PHOENIX ISLANDS	6563	0.16	
2012, CANADA, HAIDA GWAI	10	28	3	4	7.7	CHRISTMAS ISLAND, LINE ISLANDS	6117	0.03	
2013 - SANTA CRUZ, SOLOMONS	2	6	1	12	7.9	BETIO, TARAWA	1603	0.12	
2013 - SANTA CRUZ, SOLOMONS	2	6	1	12	7.9	CHRISTMAS ISLAND, LINE ISLANDS	4376	0.04	
2015 - CHILE, CENTRAL	9	16	22	54	8.3	CHRISTMAS ISLAND, LINE ISLANDS	9728	0.09	

Source: NOAA/NCEI - International Tsunami Information Center (2018)

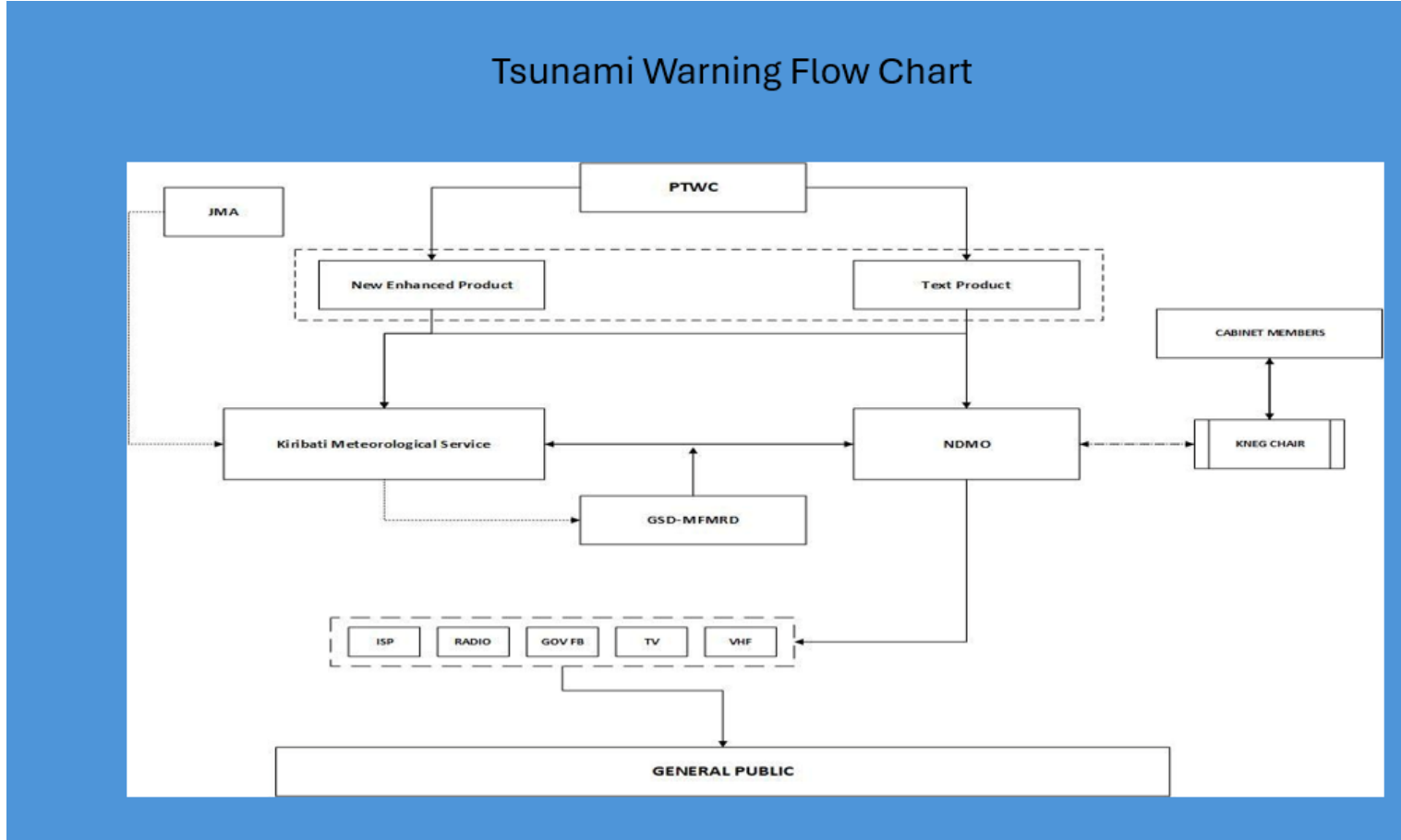


Emergency Response Action

Criteria	Type of Advisory/Alert/Warning	KMS	NDMO
Wave Height $<0.3\text{m}$	Information	Run Model, Activate and disseminate Tsunami Information form to NDMO	Disseminate information to relevant authorities and public
Wave Height $0.3\text{M} \geq H < 1\text{M}$ Arrival Time $3\text{hr} \leq T < 6\text{hr}$	Watch	Run Model and activate and disseminate Tsunami Watch form to NDMO	Disseminate information to relevant authorities and public
Wave Height $1\text{M} \geq H < 3\text{M}$ Arrival Time $< 3\text{hrs}$	Warning	Activate and disseminate Tsunami Warning Form to NDMO	Coordinate



Tsunami Warning Flow Chart



Challenges:



Kiribati Tsunami
Early warning
system



LiDAR data



Hazard and
evacuation map



Lack of capacity



Human resources



DISASTER RISK MANAGEMENT
UNIT

OFFICE OF THE BERETIENTI

TUNAMI

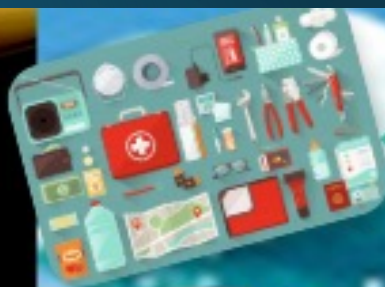
BAIKA A KAKAAWAKI

IBUKIN

KAMANOAM

P.O.Box 68 Bairiki Tarawa

Phone: 75021139/75021141/75021183



Karekei iroum
bwaai ibukin te
kamaiu n tain te
kanganga



Karekei am
reerio ao tooti
aika a maiu man
te baatere



Kateimatoaa te
ongora ibukin
taian kauring
man te
Tautaeka

Waekoa birinako rawea
maium ngkana ko ongo
taekan ke noora
kanikinaan te tunami

Okira am
tabo/mwenangam ti
ngkana a taku rabwata
ake a onimakinaki bwa
e a mano karaoan anne





KAM RABWA!