

COMMUNITY DISASTER & CLIMATE RISKS MANAGEMENT PROGRAM

TSUNAMI EVACUATION MAPS, PLANS AND PROCEDURES TRAINING (TEMPII)

NADI, FIJI

APRIL 2026



**PLAN
PREPARE
PROTECT**
KEEP YOUR AIGA SAFE



Facilitated by
Disaster Management Office
Su-Jina Vaimagalo
Senior Disaster Risk Reduction Officer
Adriel Une
Geoscience Officer

OUTLINE

? CDCRM Program

- Overview
- Outcomes

? Incorporating Tsunami Ready into
CDCRM

? Samoa Met Office's Role in the CDCRM
Program

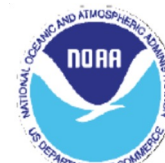
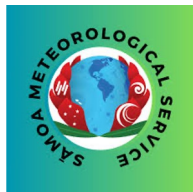


PLAN
PREPARE
PROTECT
KEEP YOUR AIGA SAFE

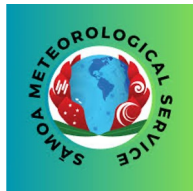


COMMUNITY DISASTER & CLIMATE RISK MANAGEMENT PROGRAM – OVERVIEW

- National/Government programme designed mainly to address and mainstream Disaster Risk Management and Climate Change Adaptation at the community level.
- Housed within DMO, MNRE as the coordinating unit for Disaster Risk Management activities (provided under NDMP)
- Established in 2012, with funding support from UNESCO, the CDCRM toolkit was developed to train, equip and build the capacity of communities to better respond to disasters, contributing to overall resilience building.
- Sustainability and continuity of the CDCRM depends heavily on the availability of funds from donor/development partners through Resilience building projects.

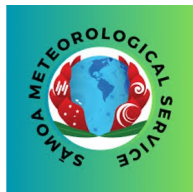


- Program is Community-driven
 - Sense of ownership
 - At the end of the program, communities retain responsibility for their VDCRM Plan
 - Coordination role
 - Communities take on an active role in coordinating disaster response in the future
 - Collaboration with government
 - This ownership and coordination strengthen partnerships between communities and government agencies.
 - Improved national response
 - The overall effect is a stronger, more effective national disaster response system.
- The program takes an inclusive approach whereby all members of the community including women, youth and people with disabilities are involved in conducting of the above assessments and tasks



OVERVIEW.....IMPLEMENTING AGENCIES

- Work in collaboration with local authorities and non-government organizations that have specific roles in disaster response as stipulated under the National Disaster Management Plan.
- 3 key Implementing Agencies supporting DMO in the roll out and facilitation of the CDCRM.
 - 1) Adventist Development & Relief Agency (ADRA)
 - 2) Samoa Red Cross Society (SRCS)
 - 3) Samoa Fire & Emergency Services Authority (SFESA)
- Response Agencies: ADRA, SFESA, SRCS, NOLA, MWCSD, MPPC (Police), SFHA, MOH, SAMOA MET



OUTCOMES OF THE PROGRAM

Village Response Teams

- Village representatives will be allocated into teams of 15 members for four (4) response teams, with the intention that they will be the first people to respond when a disaster strikes.

1. Village Disaster Coordination Committee (Komiti Autu)

Comprises high chiefs, village matai, village representatives in the government, as well as ministers. Responsible for overseeing disaster response in the village, providing early warnings, and offering support to the affected people.

2. Shelter and Safety Committee (Komiti o Saogalemu ma Fale Apitaga)

Responsible for managing evacuation centers and ensuring the safety of evacuees. Encourages the selection of women and high chiefs to ensure the safety of both the committee members and the victims.

3. First Responders Team (Komiti o Tali vave ma Galuega Laveai)

Their role is to offer first aid to victims during times of disaster. These individuals are trained by response agencies during the program to gain the skills and knowledge needed to save lives.

Members of this committee are usually youth and strong members of the community who can offer help in a timely manner.

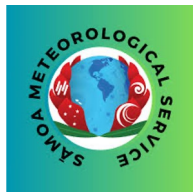
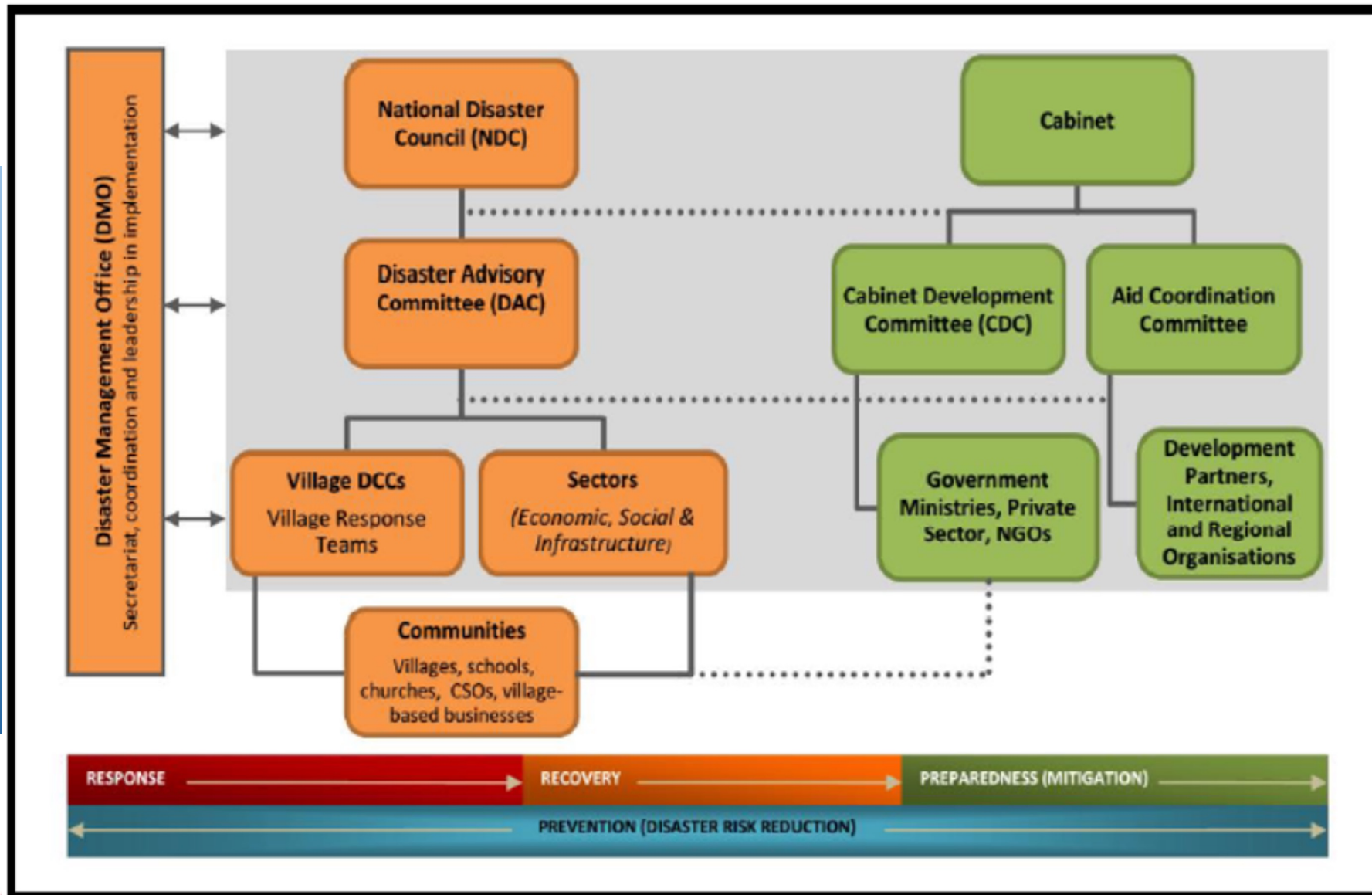
4. Disaster Recovery and Projects Committee

Responsible for ensuring that all community assets damaged by the disaster are properly documented for the recovery phase.

Each committee will prepare a report based on their role and submit it to the main committee for compilation and submission to the NEOC



Governance Arrangement for DRM in Samoa



**PLAN
PREPARE
PROTECT**
KEEP YOUR AIGA SAFE



OUTCOMES...COMMUNITY RESPONSE PLANS

Village Hazard Profiles

- Village hazard profiles encourage communities to identify all possible hazards that they have experienced. These hazards must be listed in the village disaster plan. Communities should also conduct a **risk rating of each hazard** based on their experiences, considering how often the hazard occurs and the level of damage it causes.

Village Recovery Plan

- This ensure that the community are always prepared to recover after a disaster .

FUAFUAGA E GAFATAULIMAINA AI
LAMATIAGA ONA O FAALAVELAVE
MATUIA MA FESUIAIGA O LE TAU I
FOGĀSAVAI'I



Aso mo tapenaga:

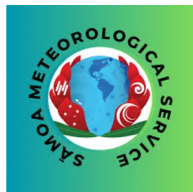
Aso toe Iloilo:

Itumalo:

SALEGA

Nuu / Afioga:

FOGĀSAVAI'I



PLAN
PREPARE
PROTECT
KEEP YOUR AIGA SAFE



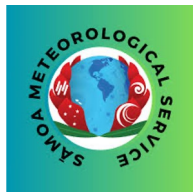
HOW SAMOA CAN INCORPORATE TSUNAMI READY INTO CDCRM...

Indicators covered - CDCRM toolkit program

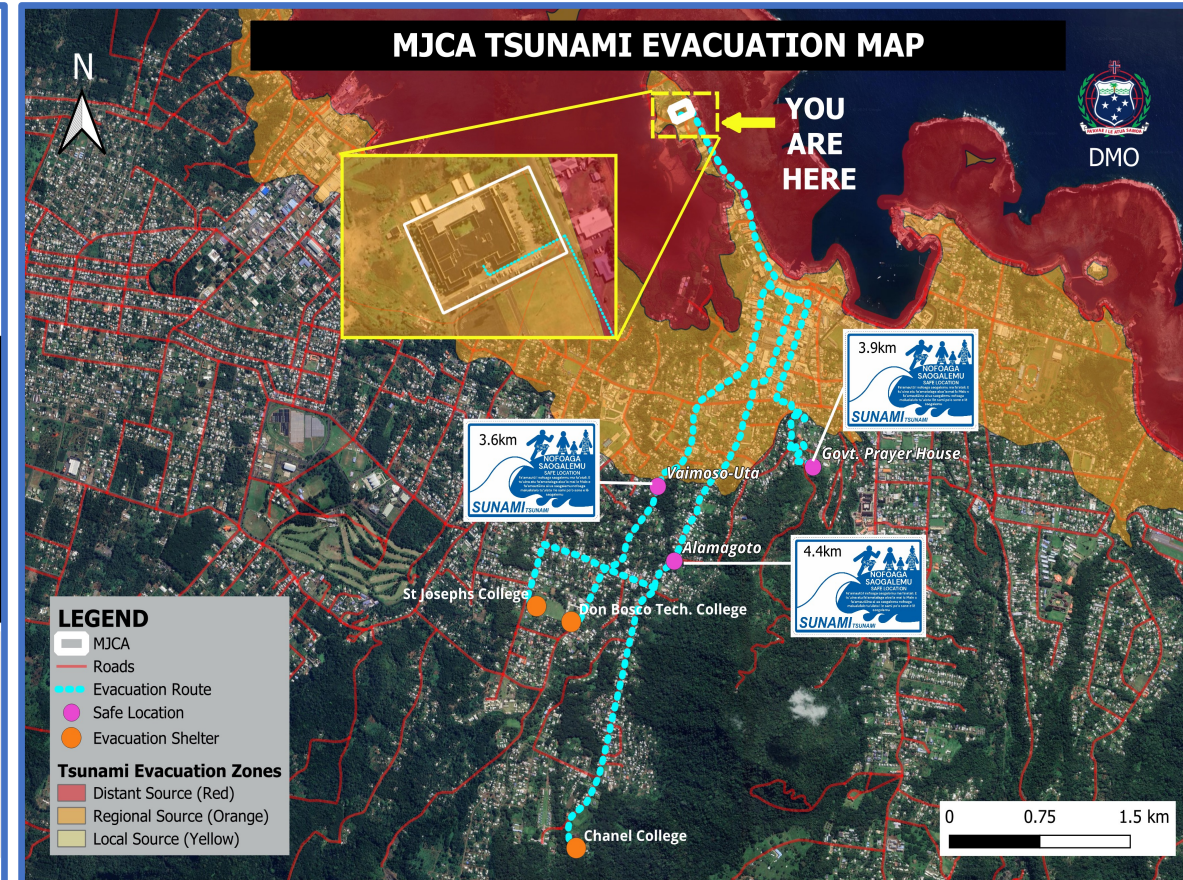
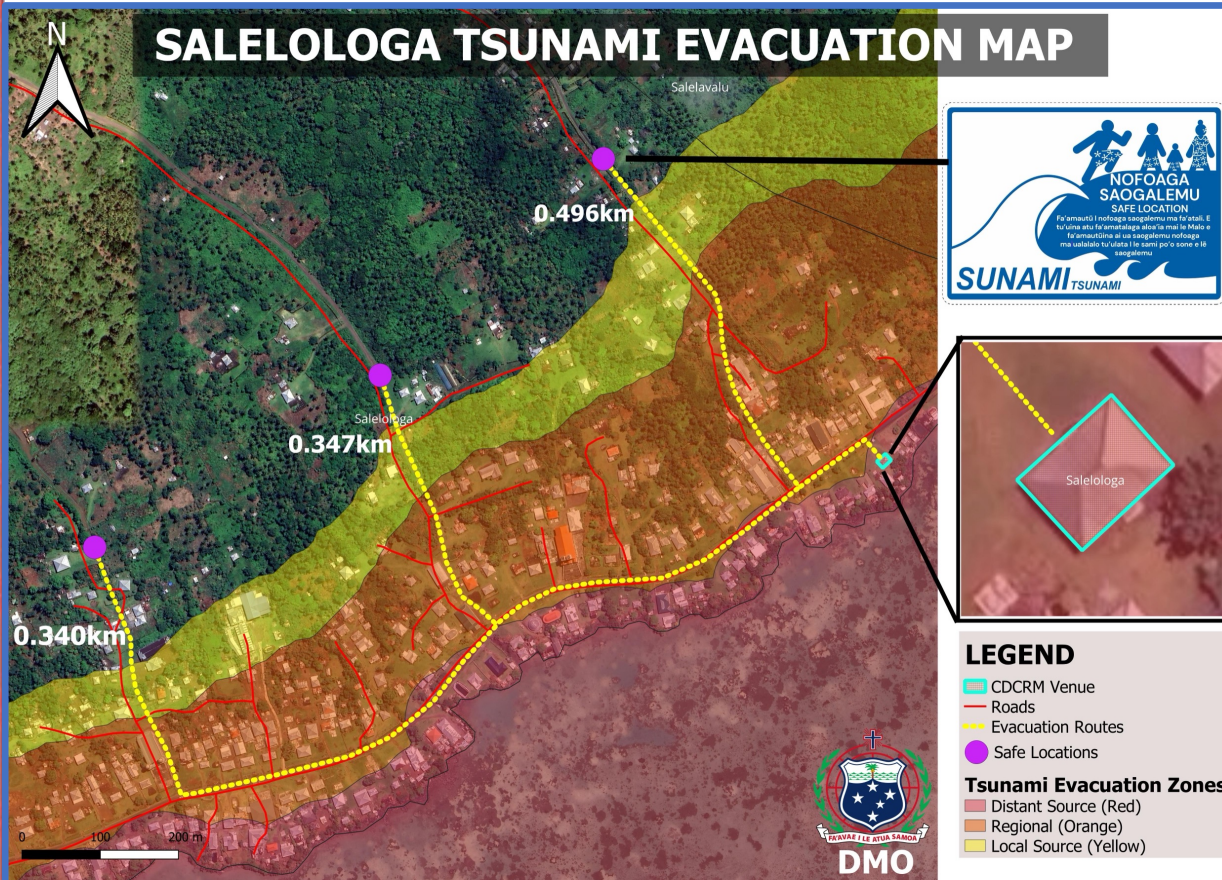
- all indicators for assessment is included in the toolkit for the program
- Tsunami hazard maps have been developed and shared with communities. These maps are used for scenario-based planning and to determine appropriate simulations for emergency exercise drills.
- Safe evacuation routes and locations have also been identified to support community preparedness and response during tsunami events.

The following key indicators still need to be addressed to recognize as a TR community:

- Installation of tsunami signage within communities
- Conducting regular awareness programs (at least three times per year)
- Implementation of tsunami simulation exercises (currently conducted only once during the program)



Tsunami Evacuation Maps



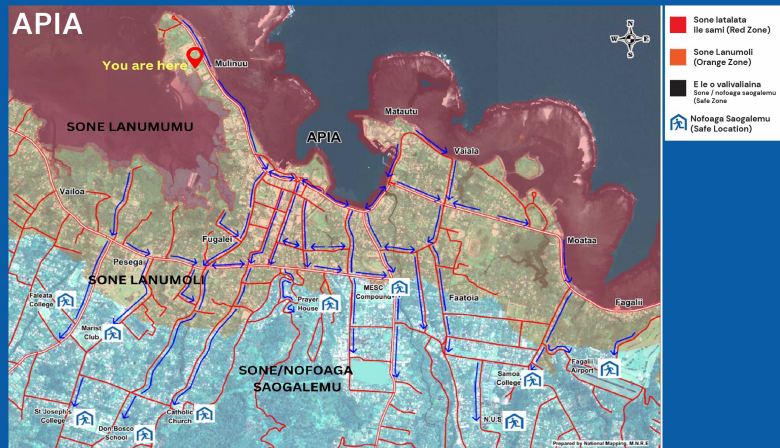
**PLAN
PREPARE
PROTECT**
KEEP YOUR AIGA SAFE



Tsunami Signs

FA'AMATALAGA TUAU MO AUALA SULUFA'I I TAIMI O SUNAMI IMPORTANT INFORMATION FOR TSUNAMI EVACUATION

**A MAEA ONA LULU SE MAFU'E MALOSI, IA FA'ATELEVAVE LOA I NOFOAGA SAOGALEMU.
AFTER A STRONG EARTHQUAKE, QUICKLY MOVE TO HIGH GROUND AND / OR INLAND**



Nofoaga le saogalemu i taimi o sunami

O fa'alililo le saogalemu nei e fa'alioa atu ai o lo'o e iai i sone le saogalemu mai i sunami. E tatau ona e mulimuilaita loa i fa'alililo o lo'o fa'alioa ma faasino atu ai auala e agai i nofoaga saogalemu.

Auala sulufa'i mo sunami

O faalililo aga'i ai e faasino ai auala sulufa'i e agai i nofoaga saogalemu.

Nofoaga Saogalemu

O le faalililo e faalilo ai nofoaga saogalemu. O lo'o fa'alioa i luga ole fa'afanua nofoaga o lo'o faatutu ai laupapa fa'atulaio, fa'afanua i nofoaga saogalemu nei, sei vagana ua tu'uina atu se fa'amatalaga aloa'ia mai le Malo ma fa'aleagaina lapata'iga mo sunami.



NOFOAGA LĒ SAOGALEMU I TAIMI O SUNAMI



A malosi ma mata'utia le lūlū o se mafu'e, pē fa'afuase'i le sami, pe fa'alogoina se gogolo o le sami, aga'i i nofoaga saogalemu.

Mulimuli i fa'asinoala. Aua ne'i toe aga'i se isi i nofoaga mauatalalo po'o sone e lē saogalemu, se'i vagana ua tu'uina atu se fa'amatalaga aloa'ia mai le Malo fa'amautuina ai ua saogalemu.



**PLAN
PREPARE
PROTECT**
KEEP YOUR AIGA SAFE



TSIC-IGC-UNESCO.ORG

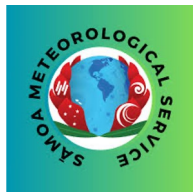
DEPARTMENT OF

Awareness programs & tsunami simulation exercises



Plan for Tsunami Ready (TR) in Samoa

- 35 communities in Samoa , who already completed the Community Disaster and Climate Risk Management (CDCRM) programs in previous years ,will now be supported and facilitated to transition into Tsunami Ready (TR) communities.
- The objective is to assist these villages in achieving the remaining indicators required for official recognition as Tsunami Ready communities by September 2026.



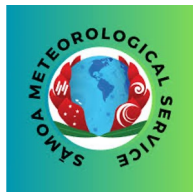
MET Division support role for CDCRM

- Educate communities on tsunami hazards and how they occur and why Samoa is very vulnerable to it.
- Raise awareness of Natural warning signs for Tsunamis (strong shaking, sea withdrawal, loud ocean roar)
- Promote immediate self-evacuation actions when natural signs are observed
- Support community understanding of official tsunami warnings and alert messages



Hazard focus area- Tsunami

- Meteorology division is divided into 4 section;
 - **Geoscience**, Weather, Climate services & Ozone
- Two Sections that provide early hazard warnings;
 - **Geoscience Section** : Earthquakes, Tsunami, Landslides, Volcanic activity.
 - **Weather Section**: Cyclones & Floodings
- During CDCRM programs, 2 reps from MET contribute to the program. One from Weather team, one from Geoscience team for Tsunami Hazard.



Early Warnings & SOP's

- NDC provides continuous monitoring system
- **Standard Operating Procedures (SOPs)** for Tsunami warnings which was established in 2012
- Monitor → Analyze → Disseminate Warnings → Act
- NDC is responsible for issuing official warnings and advisories.

INTERNAL STANDARD OPERATION PROCEDURES FOR TSUNAMI WARNING

Step 1 – Event Detection

Detection of Earthquake by Samoa Seismic Network – Report by Public and/or locally FELT (If System is down Use MMI Scale Judgement of Felt Intensity)
Or
Receive Tsunami Bulletin from PTWC or CISN or ORSNET

Step 2 – Event Analysis and IBL

Analyse earthquake – Use Auto Pick Seismic Data (for urgency)

- Analyse and determine Earthquake Parameters (max 3 – 5minutes)
- Record Earthquake Parameters
- Assess Earthquake Parameters and refer to Threshold Table for Action.

- Send SMS as FELT EARTHQUAKE and WARNING

WARNING

- Activate and trigger all sirens
- ALL STAFF to evacuate to NEOC to continue operations

Step 3: Call

- Inform and Notify ACEO/Acting DMO
- Inform and Notify ACEO/Acting MET
- Inform and Notify CEO

Step 4: Issue Bulletin

- Fill in Bulletins and issue online (Facebook)
- Relay Bulletin information via wireless and email to DMO/partners

Step 5: Monitoring and Actions

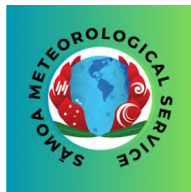
- Monitor event and note any changes
- Assess situation and circumstances to inform bulletins
- Issue follow up bulletins of verified event every 15minutes online, wireless and on email.

Step 6: Cancellation

- Advise ACEO for endorsement then proceed to issue Cancellation Bulletin when the threat is over

Step 7: Briefing

- Prepare Briefing Paper for ACEO MET/Acting regarding operations
- Discuss gaps and challenges encountered and way forward



Actions.....

- Alert Levels: Green, Yellow, Red
- Official warnings issued in both Samoan and English languages for clear and effective communication.
- Action implementation according to each alert level depends on the severity of an Earthquake event during Analyzes stage.

THRESHOLD TABLE FOR GEOLOGICAL IMPACTS IN SAMOA

LAPATA / IGA	<p>WARNING – TAKE ACTION – IMMEDIATE DANGER</p> <p>A TSUNAMI THAT MAY CAUSE WIDESPREAD FLOODING IS EXPECTED OR OCCURRING. DANGEROUS COASTAL FLOODING AND POWERFUL CURRENTS ARE POSSIBLE AND MAY CONTINUE FOR SEVERAL HOURS OR DAYS AFTER INITIAL ARRIVAL. FOLLOW INSTRUCTIONS FROM LOCAL OFFICIALS (SAMOA METEOROLOGY OFFICE) EVACUATION IS RECOMMENDED. MOVE TO HIGH GROUND OR INLAND (AWAY FROM THE WATER)</p>	WARNING
NOFO SAUNIUNI	<p>WATCH – TAKE ACTION</p> <p>A TSUNAMI WITH POTENTIAL FOR STRONG CURRENTS OR WAVES DANGEROUS TO THOSE IN OR VERY NEAR THE WATER IS EXPECTED OR OCCURRING. THERE MAY BE FLOODING OF BEACH AND HARBOR AREAS. STAY OUT OF THE WATER AND AWAY FROM THE BEACHES AND WATERWAYS. FOLLOW INSTRUCTIONS FROM LOCAL OFFICIALS</p>	WATCH
FAUTUAGA	<p>ADVISORY – BE AWARE</p> <p>A DISTANT EARTHQUAKE OR TSUNAMIGENIC EVENT HAS OCCURRED. A TSUNAMI IS POSSIBLE. STAY TUNED FOR MORE INFORMATION. BE PREPARED TO TAKE ACTION IF NECESSARY</p>	ADVISORY
PA' AMATALAGA	<p>INFORMATION STATEMENT – RELAX</p> <p>A TSUNAMIGENIC EVENT HAS OCCURRED OR A WARNING, ADVISORY OR WATCH HAS BEEN ISSUED FOR ANOTHER PART OF THE OCEAN. THESE STATEMENTS INDICATE THERE IS NO THREAT OF A DESTRUCTIVE TSUNAMI.</p>	INFORMATION

SAMOA METEOROLOGY DIVISION
IMNRE



MET Role during Tsunami Simulation

- As we prepare for simulation, MET's role as a warning center assigns the division to the **Village Disaster Coordination Committee (Komiti Autu)** since they are responsible for providing early warnings
- Issue or relay Tsunami warnings, updates and cancellations
- Provide feedback to the committee on how their response during simulation exercise
- Tsunami Drill
 - [Salelavalu Tsunami Drill](#)

